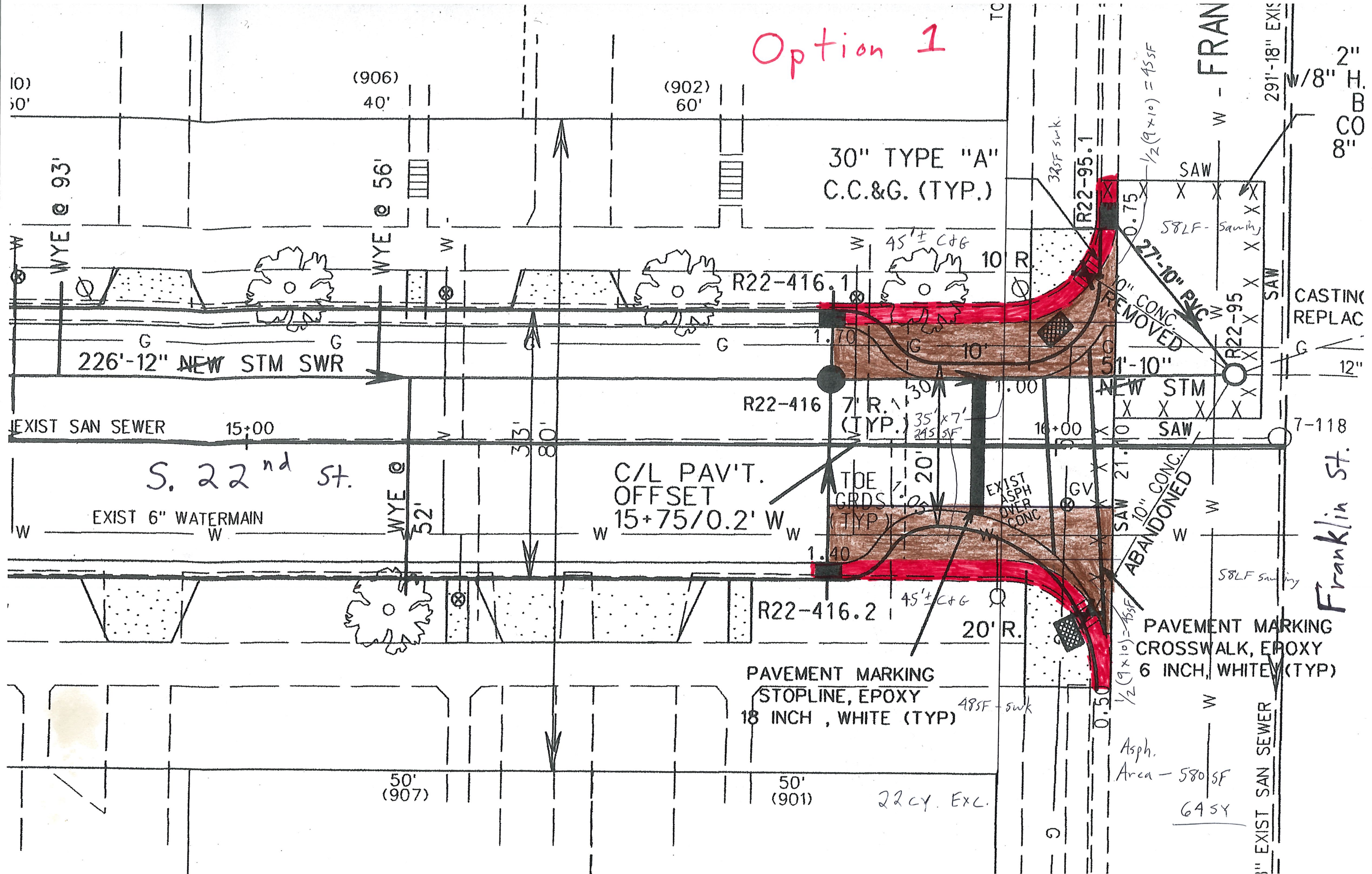


Option 1



30" TYPE "A"
C.C.&G. (TYP.)

226'-12" NEW STM SWR

EXIST SAN SEWER 15+00

S. 22nd St.

EXIST 6" WATERMAIN

C/L PAV'T.
OFFSET
15+75/0.2' W

R22-416 7' R.
(TYP.) 35'x7'
245 SF

R22-416.2 45'+ C+G

PAVEMENT MARKING
STOPLINE, EPOXY
18 INCH , WHITE (TYP)

50'
(907)

50'
(901)

22 CY. EXC.

Asph.
Area - 580 SF
645Y

FRAN

Franklin St.

1" EXIST SAN SEWER

2"
CO B.
8"

291'-18" EXIS

CASTING
REPLAC

27'-10" PVC
REMOVED

10" CONC.
ABANDONED

PAVEMENT MARKING
CROSSWALK, EPOXY
6 INCH, WHITE (TYP)

325F swk.

1/2(9x10) = 45SF

485F - swk

582LF Saming

45'± C+G
10 R.

SAW

SAW

SAW

SAW

SAW

SAW

SAW 21.0

SAW 21.0

SAW 21.0

SAW 21.0

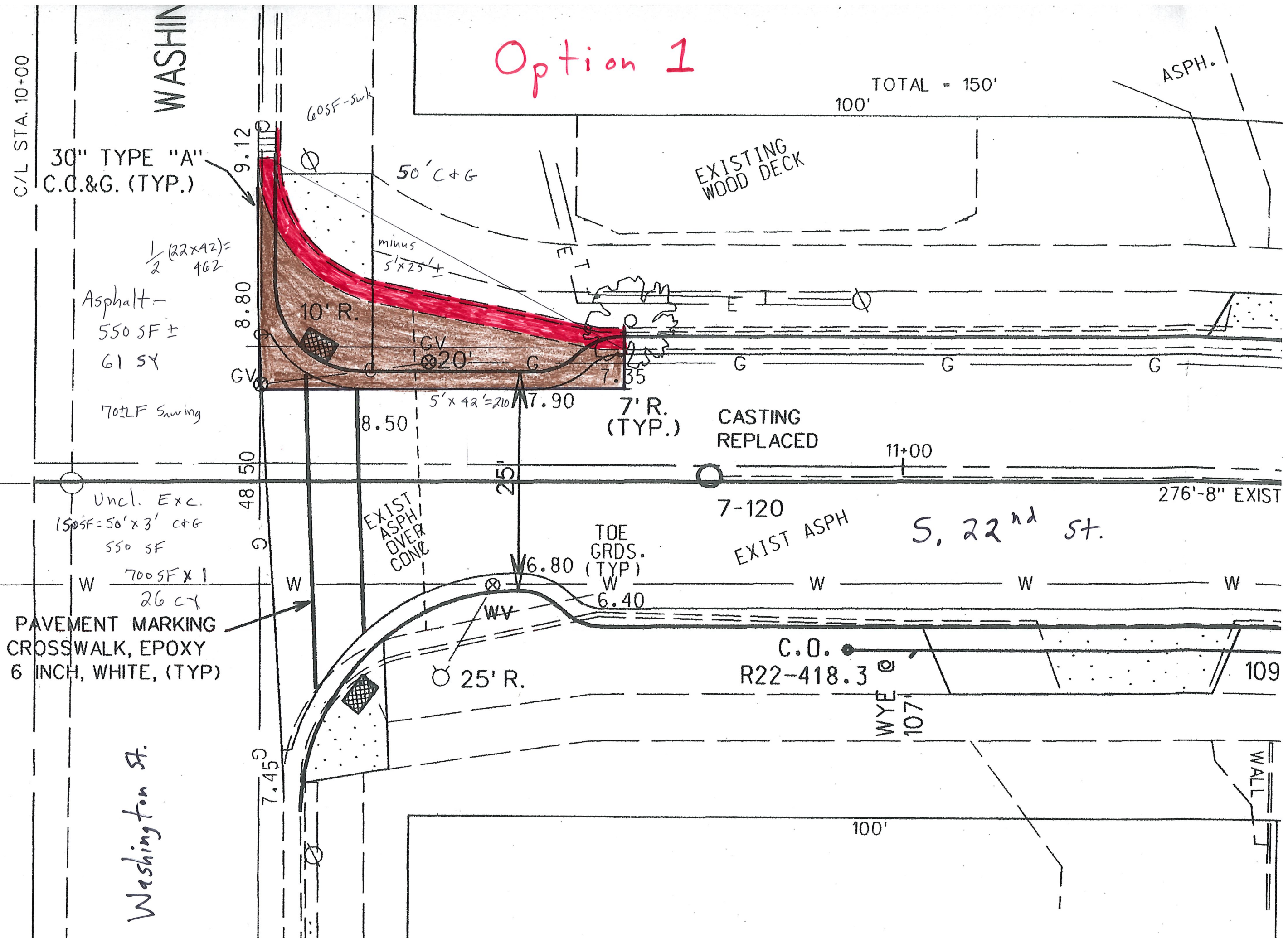
SAW 21.0

SAW 21.0

SAW 21.0

SAW 21.0

Option 1



C/L STA. 10+00

WASHIN

30" TYPE "A"
C.O.&G. (TYP.)

$$\frac{1}{2} (22 \times 42) = 462$$

Asphalt -
550 SF ±
61 SY

70± LF Sawing

Uncl. Exc.
150 SF = 50' x 3' C+G
550 SF

W 700 SF x 1
26 CY

PAVEMENT MARKING
CROSSWALK, EPOXY
6 INCH, WHITE, (TYP)

Washington St.

60 SF - SWK

50' C+G

minus
5' x 25'

10' R.

GV
20'

7' R.
(TYP.)

8.50

5' x 42' = 210

7.90

CASTING
REPLACED

11+00

48 50

EXIST
ASPH/
OVER
CONC

TOE
GRDS.
(TYP)

7-120

EXIST ASPH

S. 22nd St.

276'-8" EXIST

6.80

6.40

25' R.

C.O.
R22-418.3

WYE
107'

100'

WALL