

## Amber Noworatzky

---

**From:** Greg Minikel  
**Sent:** Monday, June 13, 2022 9:15 AM  
**To:** Amber Noworatzky; Dan Koski  
**Cc:** Nick Reimer  
**Subject:** RE: Re: Potential Hazard On 2400 Block of Franklin astreet  
**Attachments:** Proposed Parking Stall Layout for Artist Lofts on Franklin St..pdf; Aerial Photo - Franklin St. - S. 24th to S. 25th St. (Artist Loft Parking).pdf

I do not think that I have a strong recommendation one way or the other for this issue.

If I remember correctly, the Artist Lofts really wanted to have this parking, so if parking is eliminated they will not be happy.

The issue of not being able to see traffic around parked vehicles is an issue in many locations.

I guess you have to creep out past the crosswalk in order to see traffic, but that is pretty common to have do in many areas.

Have there been any accidents or just complaints about visibility or difficulty seeing around the parked vehicles??

I guess my recommendation would be to leave it as is and keep monitoring it.

---

**From:** Amber Noworatzky <anoworatzky@manitowoc.org>  
**Sent:** Wednesday, June 1, 2022 7:01 AM  
**To:** Greg Minikel <gminikel@manitowoc.org>; Dan Koski <dkoski@manitowoc.org>  
**Cc:** Nick Reimer <nreimer@manitowoc.org>  
**Subject:** FW: Re: Potential Hazard On 2400 Block of Franklin astreet

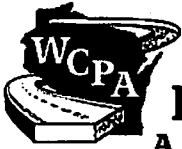
FYI – Could you please look at the area and come up with a recommendation?

**AMBER NOWORATZKY | POLICE ADMINISTRATIVE ASSISTANT**

CITY OF MANITOWOC | MANITOWOC POLICE DEPARTMENT  
920.686.6559 | F: 920.686.6599  
[www.manitowoc.org](http://www.manitowoc.org)



CONFIDENTIALITY NOTICE: This communication with its contents, including attachments, may contain confidential and/or legally privileged information. These items are covered by the Electronic Communications Privacy Act 18 U.S.C. §§ 2510-2521. It is solely for the use of the intended recipient(s) or an employee or agent responsible for delivering this message.



**WISCONSIN  
CONCRETE  
PAVEMENT  
ASSOCIATION**

4001 Nakoosa Trail, Suite 101  
Madison, WI 53714

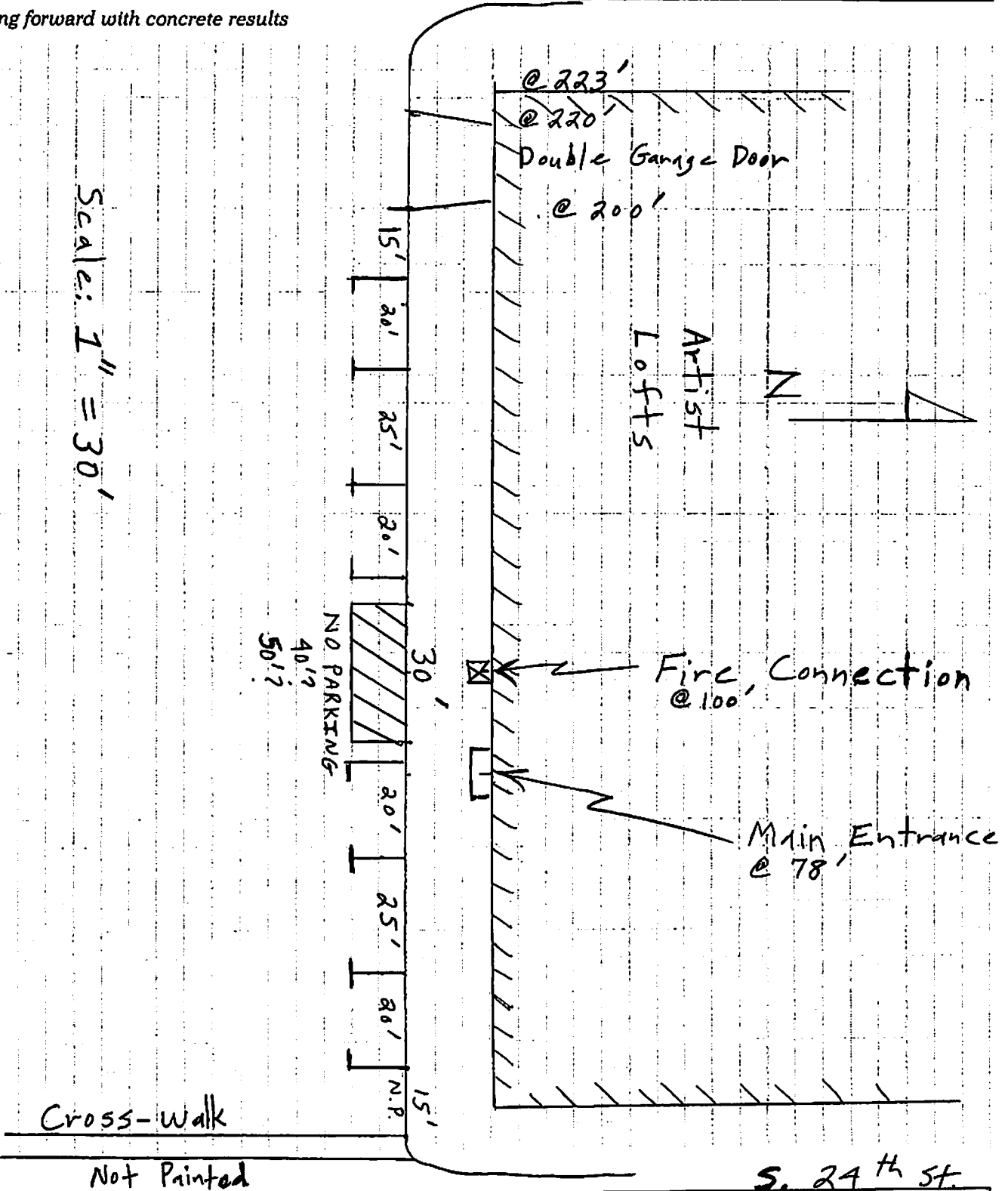
phone 608-240-1020  
fax 608-240-1019

www.wisconcrete.org

S. 25<sup>th</sup>

Moving forward with concrete results

Scale: 1" = 30'

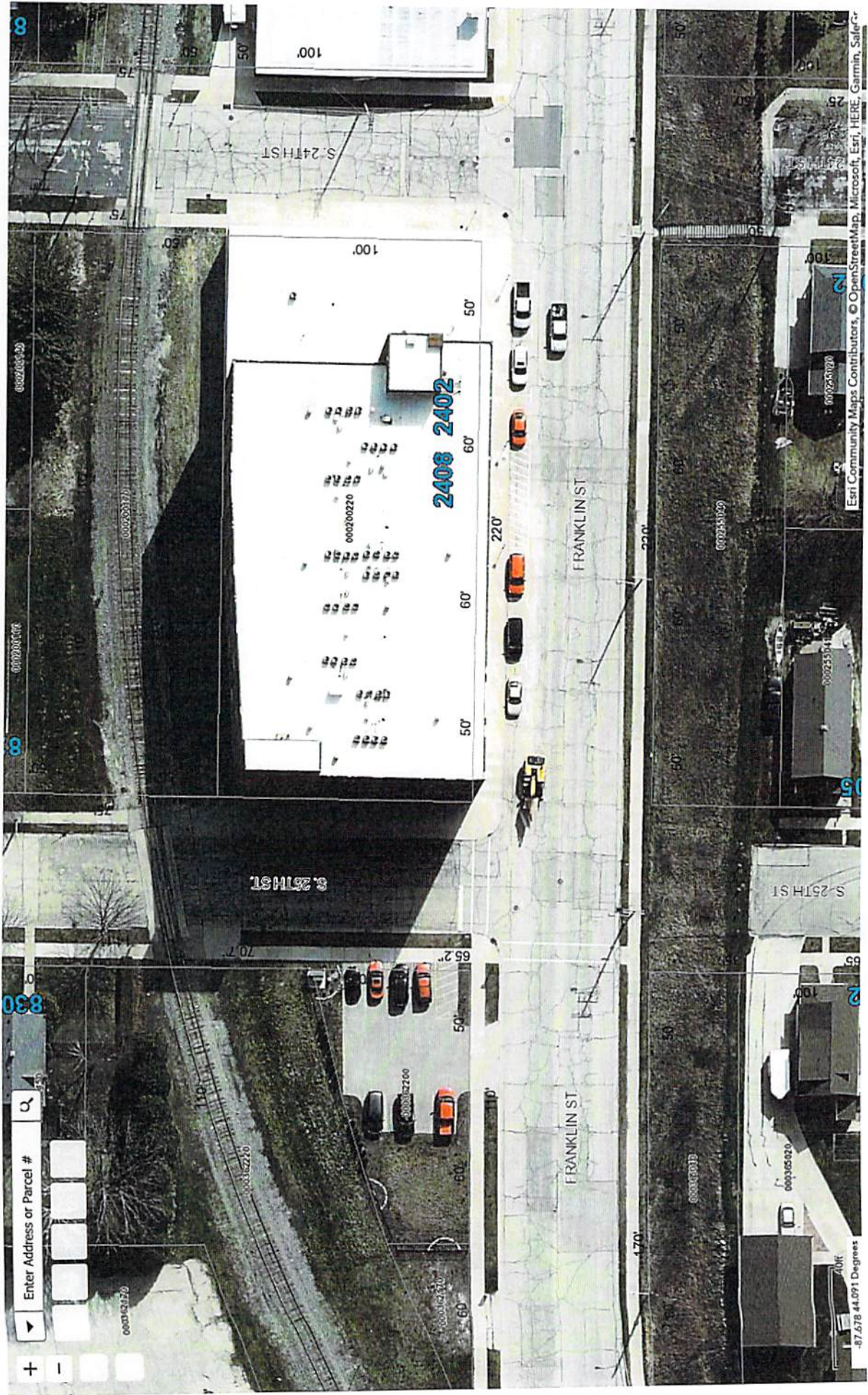


Cross-walk

Not Painted

S. 24<sup>th</sup> St.

Project No.	County	Municipality
Project Description		
Recommended by	Date	Sheet Of



Esri Community Maps Contributors, © OpenStreetMap, Microsoft, Esri, HERE, Garmin, Sailer