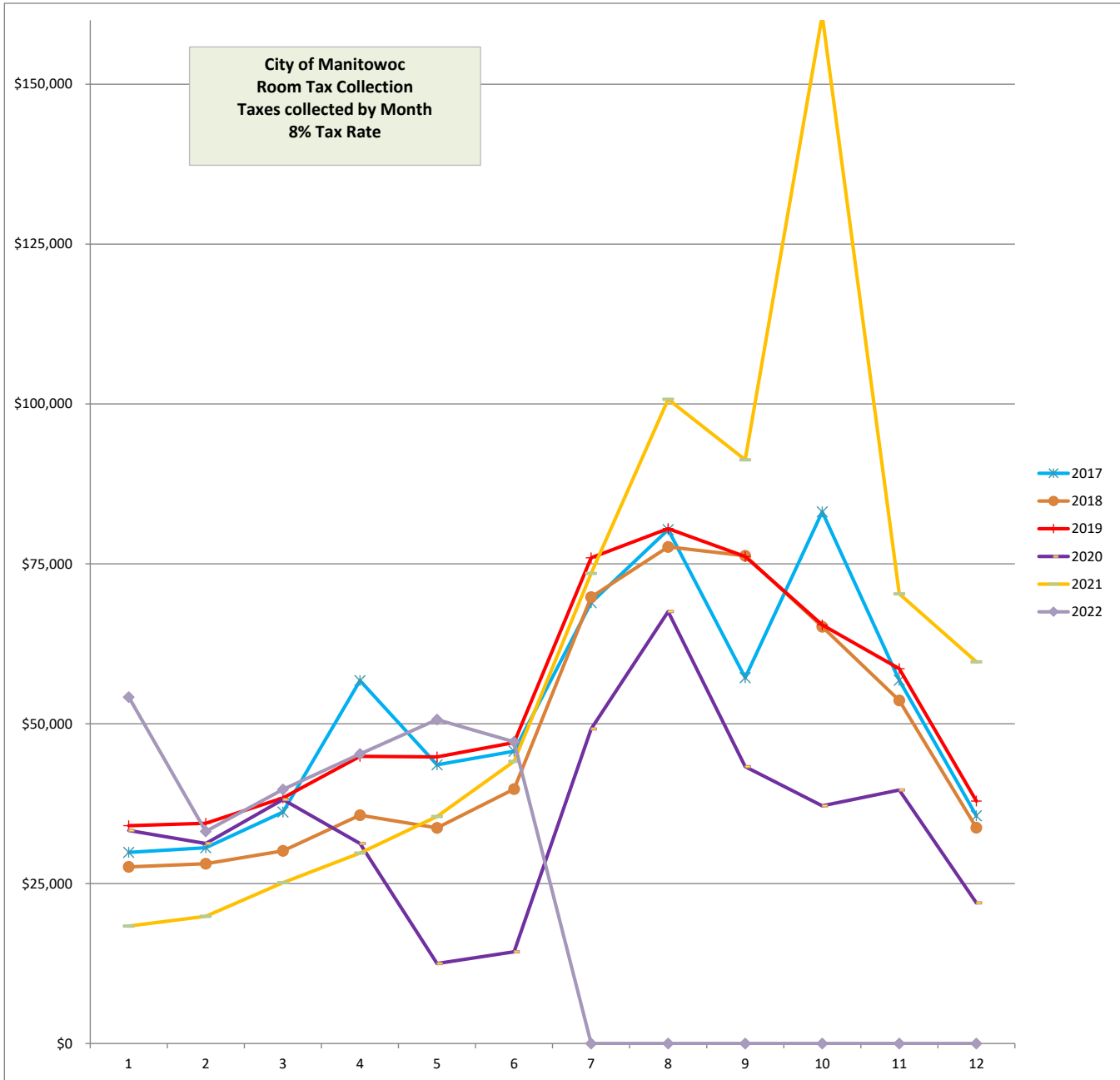


**CITY OF MANITOWOC
ROOM TAX FUND 2130
2013 - current**



RECEIPT MONTH	2013	2014	2015	2016	2017	2018	2019	2020	2021	2022
JANUARY	\$ 19,672.24	\$ 26,478.12	\$ 28,924.07	\$ 30,232.63	\$ 29,885.22	\$ 27,614.24	\$ 34,058.77	\$ 33,312.38	\$ 18,364.90	\$ 54,171.04
FEBRUARY	24,665.02	28,100.51	27,645.02	35,326.94	30,619.11	28,113.18	34,423.57	31,263.98	19,894.56	33,178.66
MARCH	28,439.08	26,085.66	28,684.83	33,660.93	36,175.67	30,118.41	38,406.13	38,143.95	25,156.16	39,716.86
APRIL	34,454.23	38,528.81	41,043.08	46,233.12	56,747.65	35,695.53	44,908.44	31,271.99	29,768.58	45,267.85
MAY	33,187.00	38,212.21	35,428.44	40,173.69	43,577.04	33,717.43	44,819.11	12,501.34	35,506.74	50,651.80
JUNE	36,821.60	40,529.94	36,820.05	42,610.11	45,702.62	39,773.70	47,057.58	14,343.07	44,127.44	47,170.04
JULY	57,500.75	53,323.68	64,070.02	64,644.39	68,922.09	69,800.98	75,949.60	49,174.64	73,498.76	-
AUGUST	86,489.32	63,650.28	76,797.24	78,541.59	80,340.80	77,657.90	80,509.68	67,540.60	100,729.36	-
SEPTEMBER	77,708.76	73,474.58	123,316.47	74,828.79	57,206.09	76,277.46	76,164.47	43,296.37	91,262.66	-
OCTOBER	50,191.46	52,021.85	68,994.74	67,725.92	83,136.39	65,163.12	65,449.47	37,175.76	160,774.16	-
NOVEMBER	48,910.66	59,724.69	65,022.05	69,260.20	56,809.77	53,628.17	58,618.81	39,630.55	70,308.99	-
DECEMBER	38,010.88	35,426.42	39,882.07	31,996.00	35,610.51	33,740.39	37,899.30	21,996.34	59,675.40	-
TOTAL	\$ 536,051.00	\$ 535,556.75	\$ 636,628.08	\$ 615,234.31	\$ 624,732.96	\$ 571,300.51	\$ 638,264.93	\$ 419,650.97	\$ 729,067.71	\$ 270,156.25