

**MANITOWOC PUBLIC UTILITIES**

1303 South 8th Street P.O. Box 1090 Manitowoc, WI 54221-1090 920-683-4600 FAX 920-686-4348 www.mpu.org

June 5, 2019

Deborah Neuser
Manitowoc City Hall
900 Quay Street
Manitowoc, WI 54220

**RE: RESOLUTION FOR ORNAMENTAL LIGHTING
MEIJER LANE AND DEWEY STREET EXTENSION**

Dear Ms. Neuser,

Dewey Street is being extended and Meijer Lane is being constructed to accommodate the new Meijer store on the west side of Rapids Road, requiring modification to the street lighting system. Enclosed is a resolution with map to order the installation of 23 each, ornamental LED street lights, as requested by Mr. Greg Minikel on the behalf of the Public Infrastructure Committee. MPU seeks Common Council approval for the installation per Municipal Code 12.150.

Fiscal Impact

LED Fixtures to Accommodate Meijer Lane and Dewey Street Extension

23 each, 131 Watt LED fixtures

Meijer has paid MPU installation costs. This reduces investment charge from \$46.00 per fixture per month to \$4.00 per fixture per month.

\$4.00/month x 23 fixtures = \$92.00/month Investment charge

\$2.36 x 23 fixtures = \$54.28/month estimated energy

\$146.28 total monthly charge

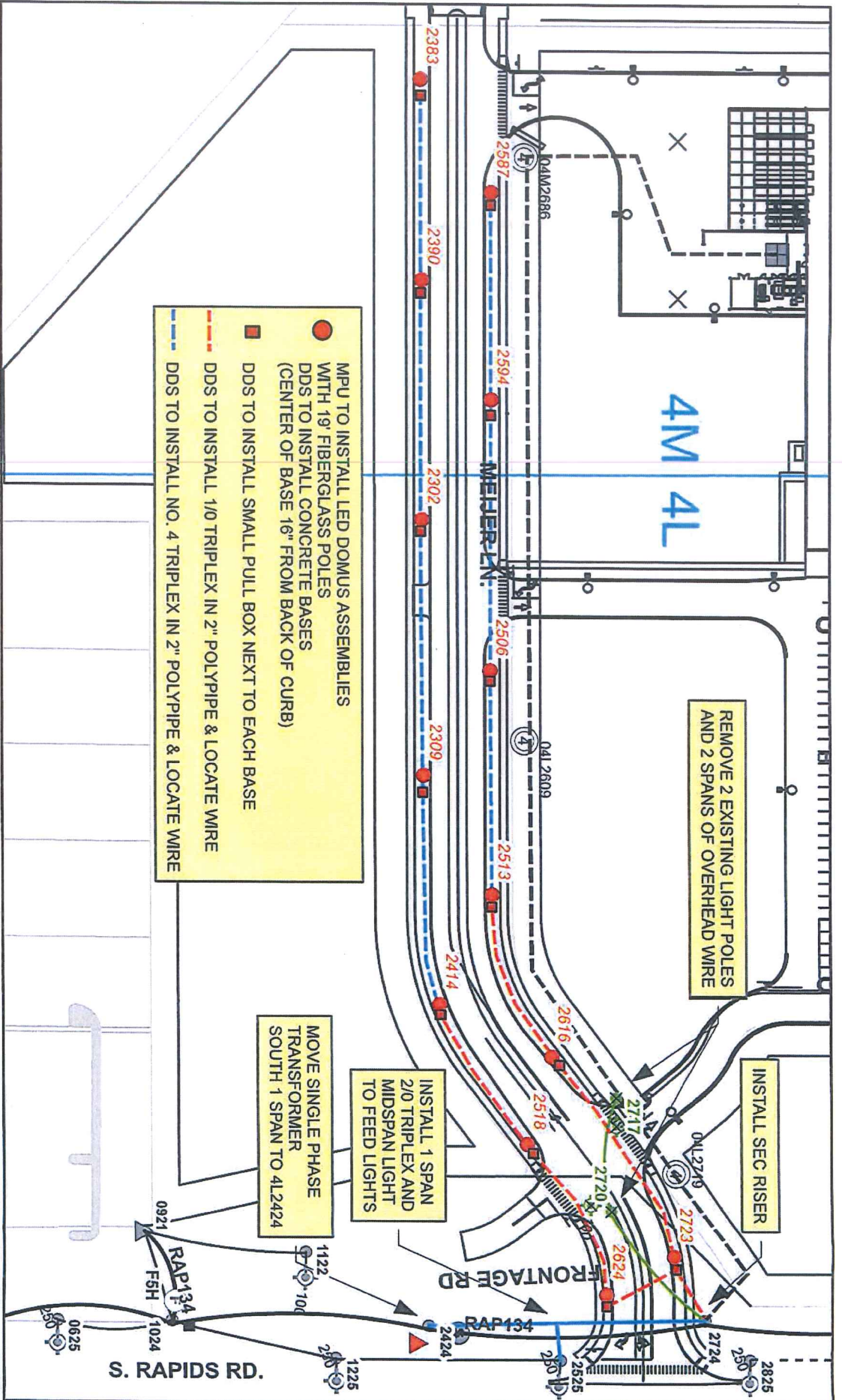
Would you please return a copy of the resolution pending Common Council review/approval?

Please contact me at (920) 686-4347 with any questions.

Sincerely,

Justin Hoffmann
Electrical Engineer

Enclosures



- MPU TO INSTALL LED DOMUS ASSEMBLIES WITH 19' FIBERGLASS POLES
- DDS TO INSTALL CONCRETE BASES (CENTER OF BASE 16" FROM BACK OF CURB)
- DDS TO INSTALL SMALL PULL BOX NEXT TO EACH BASE
- DDS TO INSTALL 1/0 TRIPLEX IN 2" POLYPIPE & LOCATE WIRE
- DDS TO INSTALL NO. 4 TRIPLEX IN 2" POLYPIPE & LOCATE WIRE

REMOVE 2 EXISTING LIGHT POLES AND 2 SPANS OF OVERHEAD WIRE

INSTALL SEC RISER

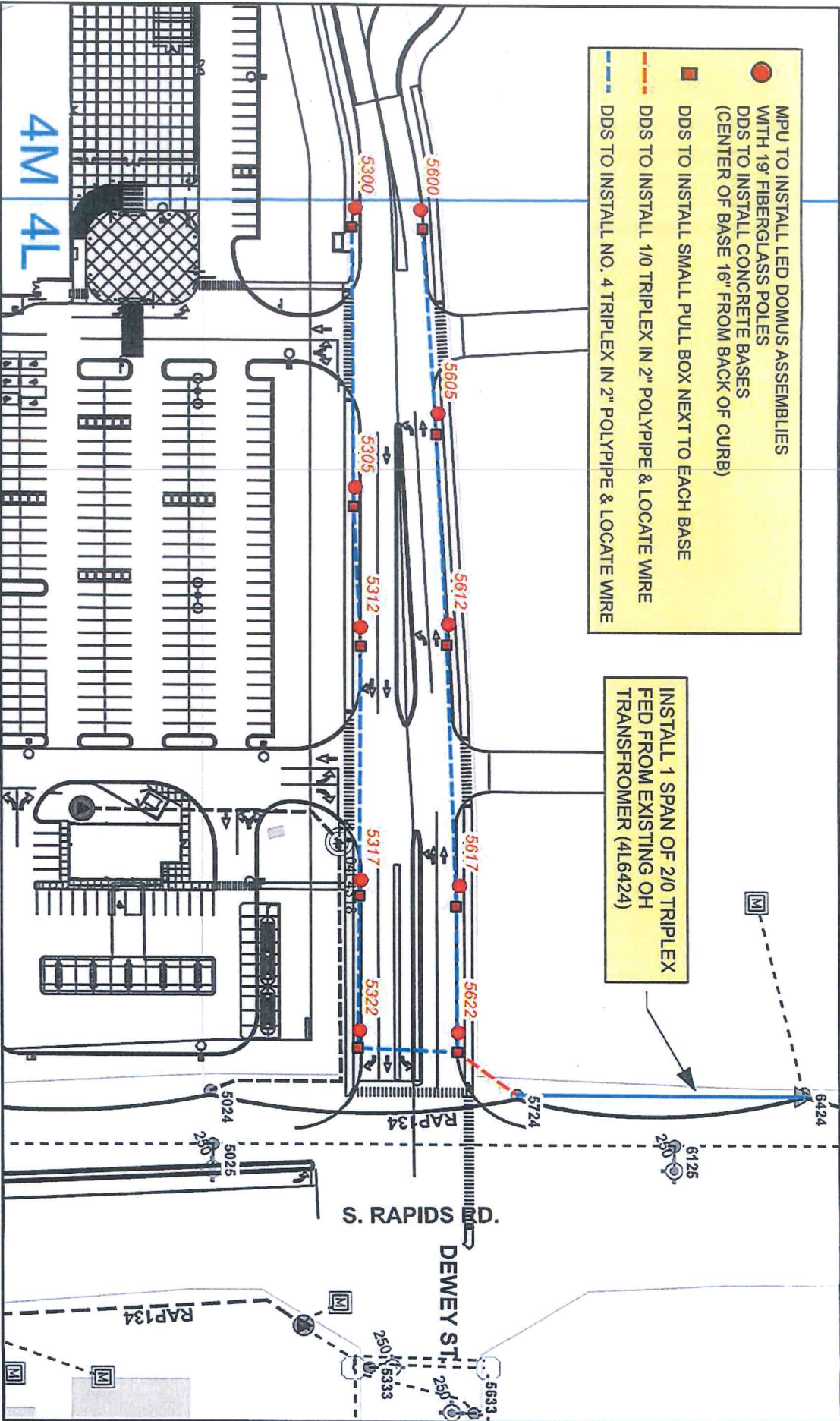
INSTALL 1 SPAN 2/0 TRIPLEX AND MIDSPAN LIGHT TO FEED LIGHTS

MOVE SINGLE PHASE TRANSFORMER SOUTH 1 SPAN TO 4L2424

NO.	DATE	DESCRIPTION	BY	TITLE:
1.	5-10-2019	CENTER OF LIGHT BASE TO BE 16" FROM BACK OF CURB	RAO	MEIJER LN STREET LIGHTING



DATE: 04-10-2019
 DRAWN: RAO
 CHKD: JH
 DEPT: ED
 SCALE: 1"=100'
 SHEET NUMBER:
 WO 6480



- MPU TO INSTALL LED DOMUS ASSEMBLIES WITH 19' FIBERGLASS POLES
- DDS TO INSTALL CONCRETE BASES (CENTER OF BASE 16" FROM BACK OF CURB)
- DDS TO INSTALL SMALL PULL BOX NEXT TO EACH BASE
- DDS TO INSTALL 1/0 TRIPLEX IN 2" POLYPIPE & LOCATE WIRE
- DDS TO INSTALL NO. 4 TRIPLEX IN 2" POLYPIPE & LOCATE WIRE

INSTALL 1 SPAN OF 2/0 TRIPLEX FED FROM EXISTING OH TRANSFORMER (4L6424)

NO.	DATE	DESCRIPTION	BY	TITLE:
1.	5-10-2019	CENTER OF BASE TO BE 16" FROM BACK OF CURB	RAO	DEWEY ST. STREET LIGHTING



DATE: 04-16-2019
 DRAWN: RAO
 CHK'D: JH
 DEPT: ED
 SCALE: 1"=100'
 SHEET NUMBER:
 WO 6479