

Jim
8-15-16

ORDINANCE

16-0771

An Ordinance amending Section 22.010 of the Municipal Code entitled: "Official Map - Master Subdivision Plans".

The Mayor and Common Council of the City of Manitowoc do ordain as follows:

SECTION 1: Section 22.010 of the Municipal Code is amended to read as follows:

"The Official Map System of the City of Manitowoc is herewith amended being in the Northwest 1/4 of the Southwest 1/4 and the Southwest 1/4 of the Southwest 1/4, Section 4, Township 19 North, Range 23 East; also the Northwest 1/4 of the Northwest 1/4 Section 9, Township 19 North, Range 23 East also in the Northeast 1/4 of the Northeast 1/4 Section 8, Township 19 North, Range 23 East, Town Manitowoc Rapids, Manitowoc, Manitowoc County, Wisconsin and all according to the attached map."

SECTION 2: The revisor of the Municipal Code is authorized to place this amendment in sequential, chronological order in the Manitowoc Municipal Code in accordance with Common Council's authority to change or add to the Official Map in accordance with Chapter 62 of the State law.

SECTION 3: This Ordinance shall take effect on the day after its publication.

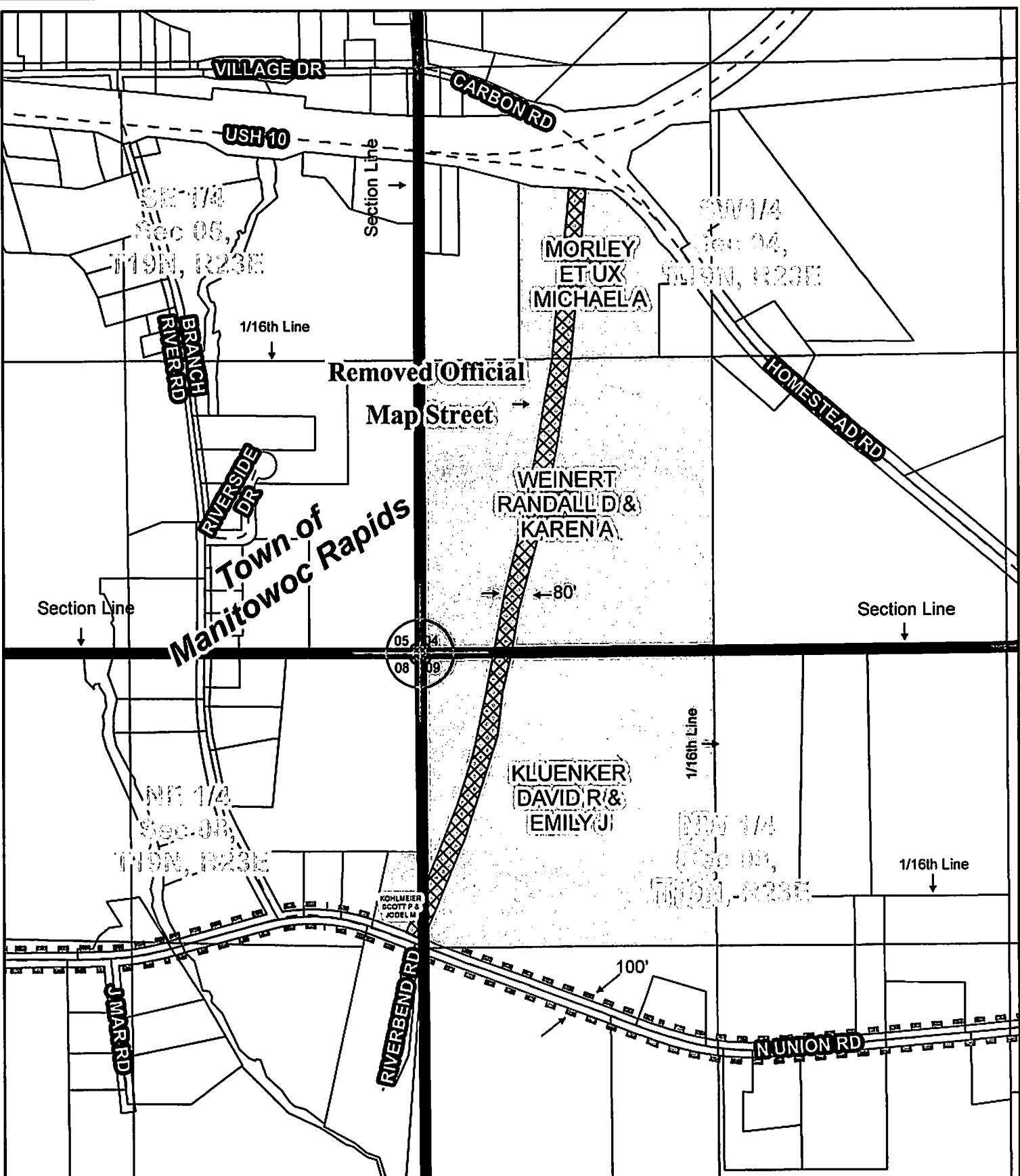
INTRODUCED AUG 15 2016

ADOPTED _____



APPROVED _____

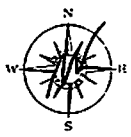
Justin M. Nickels, Mayor

Fiscal Impact: N.A.
Funding Source: N.A.
Finance Director Approval: /sc
Approved as to form: /kmm



OFFICIAL MAP AMENDMENT CITY OF MANITOWOC, WI

	REMOVED FROM THE OFFICIAL MAP
	EXISTING OFFICIAL MAP TO REMAIN



Prepared by City of Manitowoc
Planning Department
www.manitowoc.org
Map Plotted: 07/18/2016

Y:\Planning\PC Plan Commission\Actions 2016\PC24-2016 Morley Official Map Amendment
DISCLAIMER: Maps and associated data are believed to be accurate, but are not warranted. This information is not intended for legal, survey, or other related uses. Please obtain the original recorded documents for legal or survey information.



P. C. 24-2016

Manitowoc City Plan Commission
July 2016