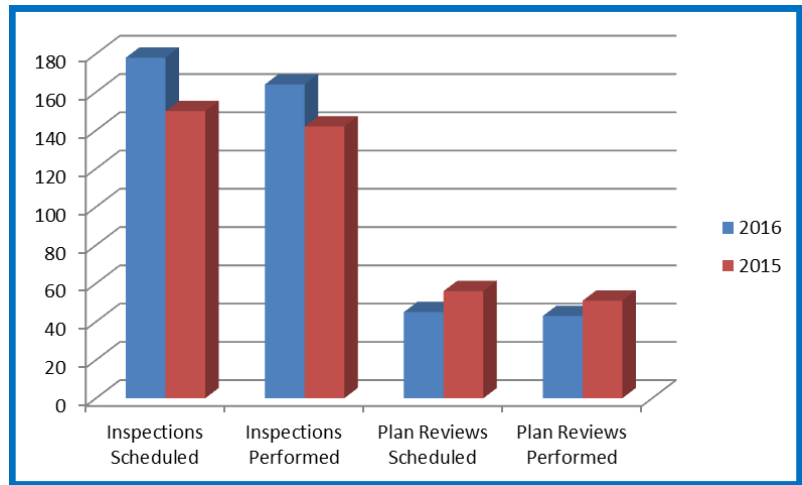




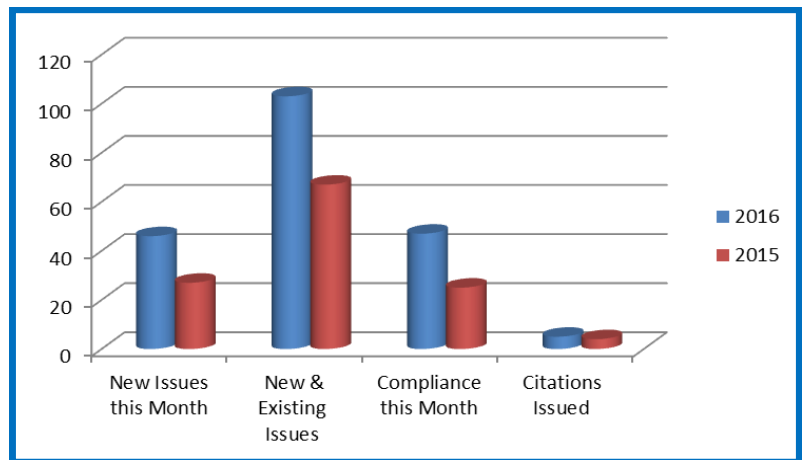
# Division of Life Safety

## OCTOBER 2016

Neighborhood Services	Oct. 2016	Oct. 2015
<b>New Issues</b>		
Electrical Issue	4	1
Exterior Protection	3	0
Fence	0	0
Garbage	11	12
Heating Facilities	0	0
Minimum Housing	6	3
Junk	6	3
Miscellaneous	0	0
Non-Dwelling Maintenance	0	2
No Permit	0	2
Porch / Deck	1	0
Rummage Sale	0	0
Sign	1	0
Special Housing	0	0
Storm water	1	0
Swimming Pool	0	0
Unfit for Human Habitation	4	0
Vehicle Junk	4	1
Vehicle Parking	2	3
Vehicle Repair	0	0
Vision Clearance	1	0
Zoning	2	0
<b>Total</b>	<b>46</b>	<b>27</b>



INSPECTION & PLAN REVIEW

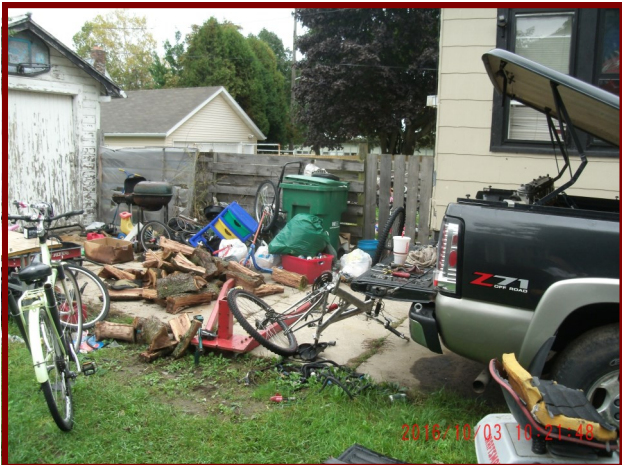


NEIGHBORHOOD SERVICES

### HOUSING STARTS ARE UP IN 2016!

WE HAD 19 NEW 1 & 2 FAMILY HOMES CONSTRUCTED IN 2015.

AS OF THE WEEK OF NOVEMBER 14, WE HAVE 23 NEW 1 & 2 FAMILY HOMES FINISHED OR UNDER CONSTRUCTION.



	Oct. 2016	2016 YTD	Oct. 2015	2015 YTD
<b>BUILDING</b>				
Antenna	2	8	0	1
CBRF Alteration	1	3	1	1
Commercial Alteration	6	34	3	44
Commercial New	2	8	0	4
Commercial Roof	1	15	3	16
Residential 1 Family Addition	3	9	1	18
Residential 1 Family Alteration	21	172	17	157
Residential 1 Family New	0	11	0	7
Residential 2 Family Alteration	0	5	0	9
Residential 2 Family New	0	4	1	5
Residential Detached	1	38	4	35
Residential Footing	0	10	0	1
Residential Razing	1	3	0	3
Residential Roof	11	63	11	29
Siding	2	24	9	38
Deck	3	45	6	44
Fence	4	55	7	15
Gov't. Alteration	0	1	0	4
<b>TOTAL</b>	<b>58</b>	<b>506</b>	<b>63</b>	<b>431</b>
<b>ELECTRICAL</b>				
Commercial Addition	0	5	0	12
Commercial Alteration	8	59	8	96
Commercial New	3	9	0	5
Misc.	68	466	36	290
MPU Service	1	12	2	20
Residential Alteration	13	144	8	141
Residential New	2	20	0	14
Service	8	84	12	76
<b>TOTAL</b>	<b>103</b>	<b>799</b>	<b>66</b>	<b>654</b>
<b>HVAC</b>				
Commercial Heating	5	12	1	13
Commercial HVAC	3	32	6	34
Residential Heat	39	135	11	114
Residential HVAC	24	139	10	101
<b>TOTAL</b>	<b>71</b>	<b>318</b>	<b>28</b>	<b>262</b>
<b>PLUMBING</b>				
Commercial Addition	1	8	2	15
Commercial Alteration	3	19	0	31
Commercial New	3	9	1	8
Commercial Water Heater	3	37	3	31
Residential New	1	23	1	14
Residential Addition	1	8	1	7
Residential Remodeling	9	83	5	98
Residential Water Heater	15	209	14	197
Sewer/Lateral	3	62	4	26
<b>TOTAL</b>	<b>39</b>	<b>458</b>	<b>31</b>	<b>427</b>
<b>SIGNS</b>				
Signs	5	45	6	21
Signs Animated	0	1	0	1
<b>TOTAL</b>	<b>5</b>	<b>46</b>	<b>7</b>	<b>20</b>
<b>TOTAL PERMITS</b>	<b>276</b>	<b>2117</b>	<b>195</b>	<b>1794</b>