

CANADIAN NATIONAL RAILROAD

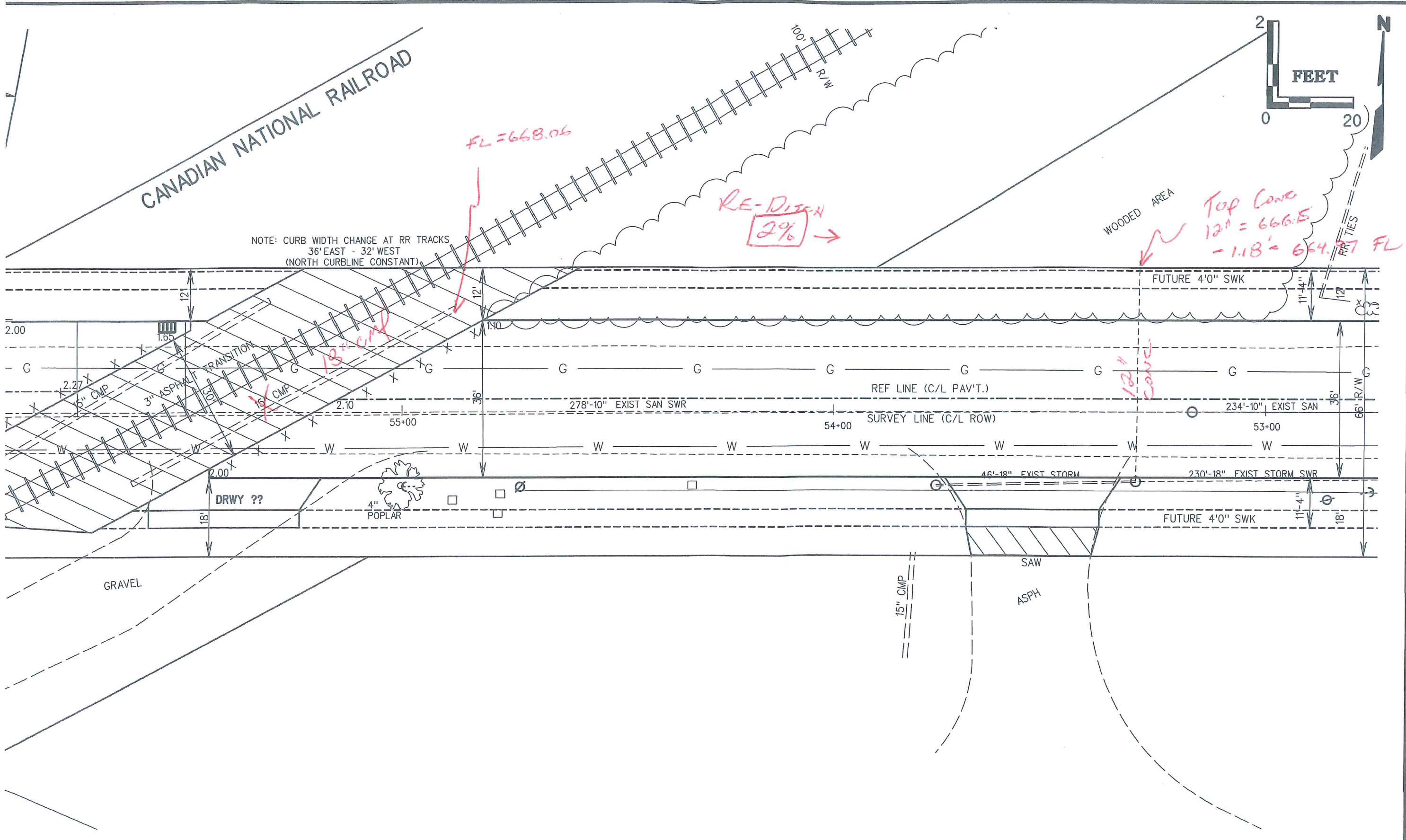
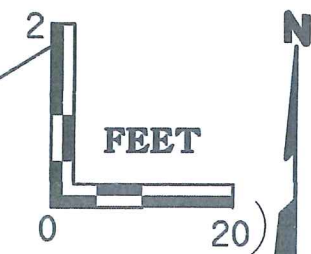
NOTE: CURB WIDTH CHANGE AT RR TRACKS
36° EAST - 32° WEST
(NORTH CURBLINE CONSTANT)

FL = 668.06

RE-DITCH
2% →

WOODED AREA

Top Cone
12" = 666.5
- 1.18' = 664.7 FL



2.00

1.65

12'

DRWY ??

18'

4" POPLAR

55+00

2.10

12'

1.40

278'-10" EXIST SAN SWR

54+00

SURVEY LINE (C/L ROW)

46'-18" EXIST STORM

FUTURE 4'0" SWK

11'-4"

18'

234'-10" EXIST SAN

53+00

230'-18" EXIST STORM SWR

11'-4"

18'

REF LINE (C/L PAV'T.)

12" cone

FUTURE 4'0" SWK

11'-4"

12'

12'

12'

12'

12'

12'

12'

12'

12'

12'

12'

12'

12'

12'

12'

12'

12'

12'

12'

12'

12'

12'

12'

12'

12'

12'

12'

12'

12'

12'

12'

12'

12'

12'

12'

12'

12'

12'

12'

12'

12'

12'

12'

12'

12'

12'

12'

12'

12'

12'

12'

12'

12'

12'

12'

12'

12'

12'

12'

12'

12'

12'

12'

12'

12'

12'

12'

12'

12'

12'

12'

12'

12'

12'

12'

12'

12'

12'

12'

12'

12'

12'

12'

12'

12'

12'

12'

12'

12'

12'

12'

12'

12'

12'

12'

12'

12'

12'

12'

12'

12'

12'

12'

12'

12'

12'

12'

12'

12'

12'

12'

12'

12'

12'

12'

12'

12'

12'

12'

12'

12'

12'

12'

12'

12'

12'

12'

12'

12'

12'

12'

12'

12'

12'

12'

12'

12'

12'

12'

12'

12'

12'

12'

12'

12'

12'

12'

12'

12'

12'

12'

12'

12'

12'

12'

12'

12'

12'

12'

12'

12'

12'

12'

12'

12'

12'

12'

12'

12'

12'

12'

12'

12'

12'

12'

12'

12'

12'

12'

12'

12'

12'

12'

12'

12'

12'

12'

12'

12'

12'

12'

12'

12'

12'

12'

12'

12'

12'

12'

12'

12'

12'

12'

12'

12'

12'

12'

12'

12'

12'

12'

12'

12'

12'

12'

12'

12'

12'

12'

12'

12'

12'

12'

12'

12'

12'

12'

12'

12'

12'

12'

12'

12'

12'

12'

12'

12'

12'

12'

12'

12'

12'

12'

12'

12'

12'

12'

12'

12'

12'

12'

12'

12'

12'

12'

12'

12'

12'

12'

12'

12'

12'

12'

12'

12'

12'

12'

12'

12'

12'

12'

12'

12'

12'

12'

12'

12'

12'

12'

12'

12'

12'

12'

12'

12'