



CITY OF MANITOWOC

WISCONSIN, USA

www.manitowoc.org

Date: March 18, 2024

To: Mayor Nickels and Common Council

From: Paul Braun, City Planner

Re: State Highway 42 Reconstruction Project (Washington Street & Calumet Avenue)

Mayor and Council:

The City and WisDOT have been working together on the S.T.H. 42 reconstruction project. One of the design features that Community Development staff has met with some business owners on is the need for on-street parking on Washington Street from S. 16th to S. 26th Streets. Parking on both sides of Washington Street from S. 16th to S. 8th Street is not expected to be impacted. WisDOT has stated that they have concerns over safety with the inconsistency of some street sections having on-street parking and other sections without on-street parking. WisDOT designs for the status quo and will make design changes based on the local municipalities input and preferences. WisDOT only pays for the travel lanes; parking lanes, landscaping and other non-travel lane costs are the City's responsibility. It is estimated that there would be a cost of at least \$100,000 to the City to retain the on-street parking along the segment of S. 16th to 25th Streets. In the 9-block corridor approximately 32 on-street spaces currently exist, of those only 4 spaces are currently marked on the street.

Below is a bullet point summary of Community Development's discussions with some of the Washington Street business owner's that currently have on-street parking in front of their property.

Manitowoc Trophy – Jim Behnke 2402 Washington Street

- Would like to keep the on-street parking in front of their business.
- Potential design change could be to construct "bulb-outs" at the corner and retain the parking, bulb-out would define on-street parking area clearer. Bulb-out would also shorten walking distance for pedestrians.
- He has 5 staff plus two renters on second floor.

Hibbard Financial – Al and Ellen Hibbard 2316 Washington Street

- Questioned why bike lanes are needed along the corridor and why the change from 4 lanes to 2.
- Would like to keep the on-street parking in front of their business. Their business is expecting to increase so parking is a premium. On-street parking is needed but it is unsafe, customers parking on Washington Street have had their vehicles side swiped.
- The intersection is unsafe for pedestrians. A lot of students from the middle school use the 24th Street intersection because 24th Street has the only set of stairs down the bluff adjacent to Franklin Street which is to the north. Their corner is also a bus stop for the school buses. Vehicles coming from the west are

speeding and going into the intersection from an angle, so the vision triangle to see pedestrians is difficult. A flashing ped sign and cross walk paintings is needed.

- Currently it's difficult to turn left off of 24th Street onto Washington Street, their opinion is going from 4 to 2 lanes will make it even more difficult.
- The timing of the signal lights along the entire Calumet Avenue corridor are terrible. Customers comment how frustrating the signal light timing is.

Our World – Brian Ploederl – 2315 Washington Street

- No concerns with converting from 4 to 2 lanes.
- Would prefer to keep parking on Washington Street, but would be open to parking on one side of the street.
- There are a lot of pedestrian crossings from their customers but more importantly a lot of students cross at the 24th and Washington Streets intersection. Pedestrian safety must be improved at this intersection. High speeds and vision triangle concerns because Washington Street, from the west enters the intersection at an angle.
- School bus stop at the intersection.

Grizzly's – Mark Weston – 2204 Washington Street

- The current street designs were emailed to Mr. Weston and staff has not received any comments to date.

Bud Willman's – Garrett Willman – 1903 Washington Street

- They would like to retain the on-street parking on their block. It would be more impactful if the on-street parking was better designed to be safer and more apparent.
- They are supportive of the roadway going from 4 lanes to the 2 with the center turn lane.
- Overall, they have concerns with the speed of traffic on Washington Street as drivers come down the hill from the west.



Saucy's Sports Bar – Travis Lauson – 1915 Washington Street

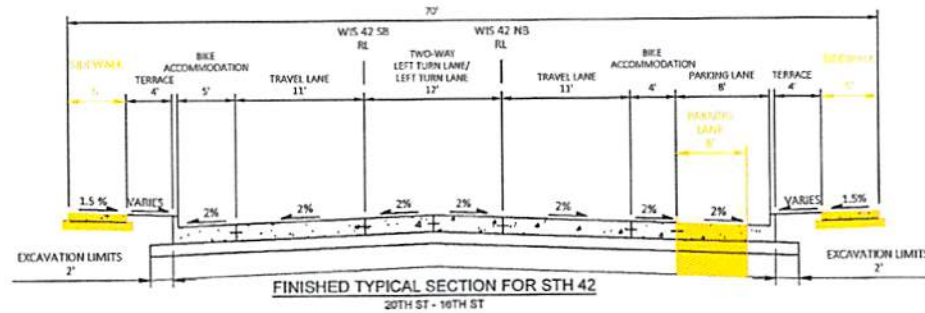
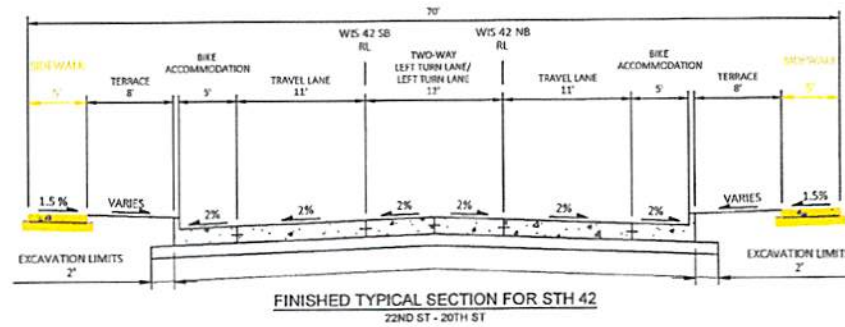
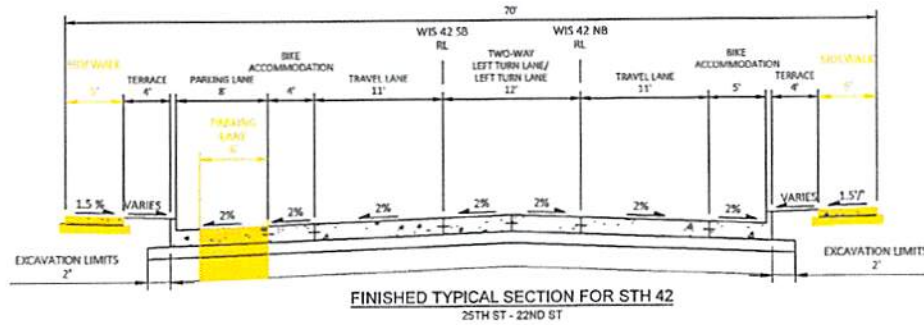
- No issues with the proposal to change from 4 lanes to 2.
- Didn't realize that parking was allowed on Washington Street in front of the business, so he has no issues with no on-street parking.

Community Development and Public Infrastructure staff have discussed the on-street parking design from S. 16th to S. 25th Street and are recommending this section be designed without on-street parking. The major reasons for the recommendation include public safety for pedestrians and vehicles, improved site vision triangles, decrease in accidents, and consistency of the center line and parking lanes along the corridor. Attached are the cross sections, the first page is the current design, the second page would be the design if no parking lanes are included. The last map attached shows the existing on-street parking conditions.

After the Council makes their recommendation, staff will forward the comments onto WisDOT for their review and input. As always, if there are any questions, feel free to contact me or Adam Tegen to discuss.

LEGEND

	CITY OF MANITOWOC FUNDED (100% LOCAL)
	FEDERAL FUNDED (100% FEDERAL)



PROJECT NO: 4100-42-00

HWY: STH 42

COUNTY: MANITOWOC

TYPICAL SECTIONS

SHEET

E

FILE NAME: I:\14520508 USH 151 MANITOWOC\CD\ASR\1510THRS-5-24 25TH TO 16TH PARKING TYPICAL SECTIONS.DWG
LAYOUT NAME: 020801-6

PLOT DATE: 4/8/2021 8:41 AM

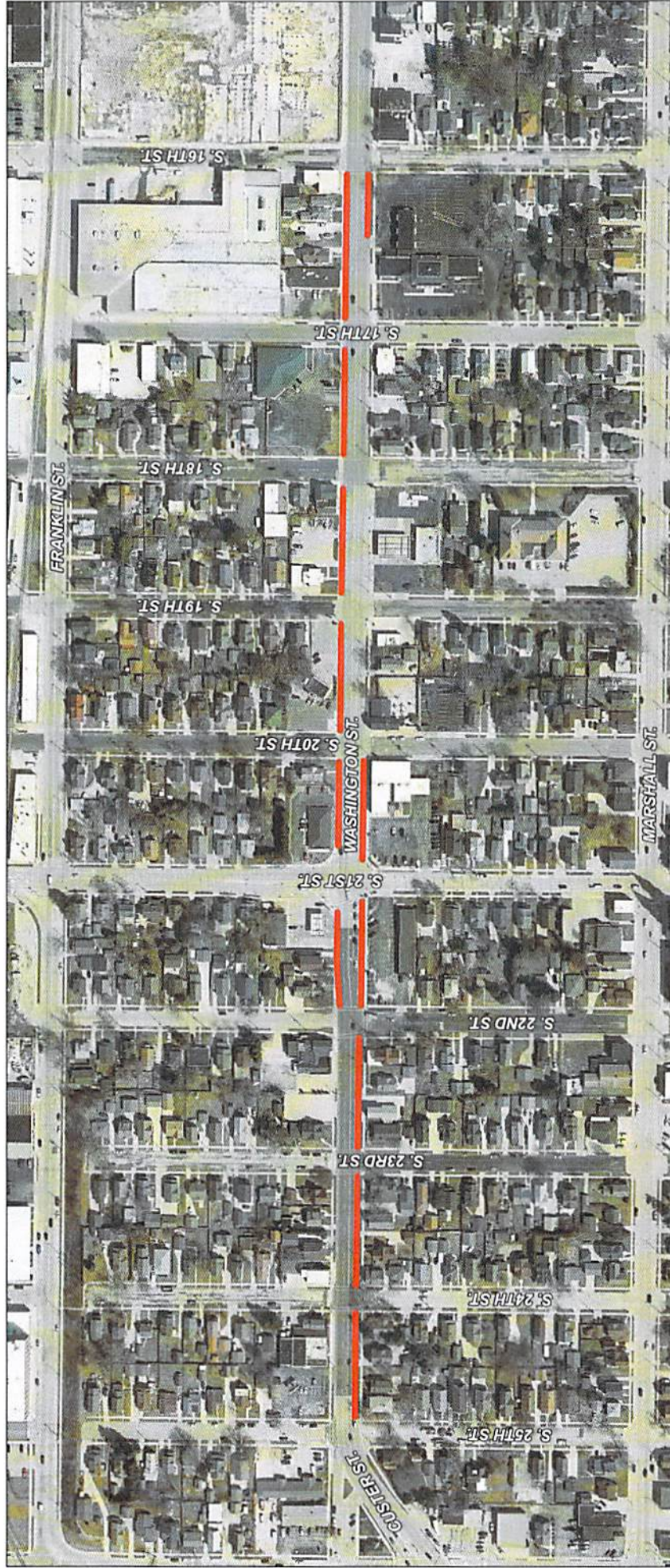
PLOT BY: PRUGL, JOHNATHAN

PLOT NAME:

PLOT SCALE: 1 IN=30 FT

WSP00\CAD05 SHEET 42

WASHINGTON ST. PARKING EXISTING CONDITIONS



Legend
— No Parking

