



*Jim  
7-21-14*

June 20, 2014

CITY OF MANITOWOC  
JENNIFER HUDON, CLERK  
900 QUAY STREET  
MANITOWOC WI 54220

## Office of the County Treasurer

County Courthouse 1010 South 8<sup>th</sup> Street • Manitowoc WI 54220

Fax-920.683.5180

Cheryl M. Duchow County Treasurer 920.683.4021 cherylduchow@co.manitowoc.wi.us  
Nancy Saueressig Deputy County Treasurer 920.683.4020 nancysaueressig@co.manitowoc.wi.us

14-1413 #3

RECEIVED

JUN 23 2014

CITY CLERKS OFFICE

IN REM #: 17 through 33

PARCEL #: 052-000-045-060.00 Dean Ecker; 052-000-064-060.00 Bennett LaChappelle; 052-000-142-190.00 Todd Peterson; 052-000-196-160.00 Rick Salta; 052-000-255-020.00 Randy Trippler; 052-000-291-070.00 John Birkenstock Equity Trust; 052-000-306-060.00 Sheila Deno; 052-000-306-190.00 William Mueller; 052-000-313-090.00 Frederick & Rita Tittl; 052-000-326-050.00 Richard Wolf; 052-220-013-060.00 Barbara E. Engelbrecht; 052-450-005-010.00 Matthew Hartfield; 052-450-020-130.00, 052-823-403-190.00, 052-450-031-050.00 Dale & Julie Braunel; 052-808-404-032.00 TWX Corp

Enclosed is a copy of the public notice of the tax foreclosure action In Rem 2014 which constitutes the commencement of a special proceeding by Manitowoc County against each parcel of real estate with delinquent taxes from 2010 to present. Any person having any right, title or interest in any parcel described in the list may redeem such a parcel by **paying all of the sums mentioned, together with interest and other foreclosure charges.** An explanation of these rights from the Wisconsin State Statutes has been enclosed.

The last day of redemption is **Friday, August 15, 2014.** You have thirty days (30) from the last date of redemption in which to object to the foreclosure on one of the following three grounds:

- 1) The land was not liable to taxation.
- 2) The taxes were, in fact, paid on the parcel.
- 3) The tax lien is barred by the statute of limitations.

The court date for foreclosure action is scheduled for **Thursday, September 25, 2014 at 10:00 AM in Branch III.** If the total amount of taxes, interest, and foreclosure charges remain unpaid or a signed agreement is not on file at the time of the court action, the property listed above may become the property of Manitowoc County.

The amount of taxes due and payable is enclosed for your reference. If you have any questions, please call the County Treasurer Office at 920/683-4020 or 920/683-4021.

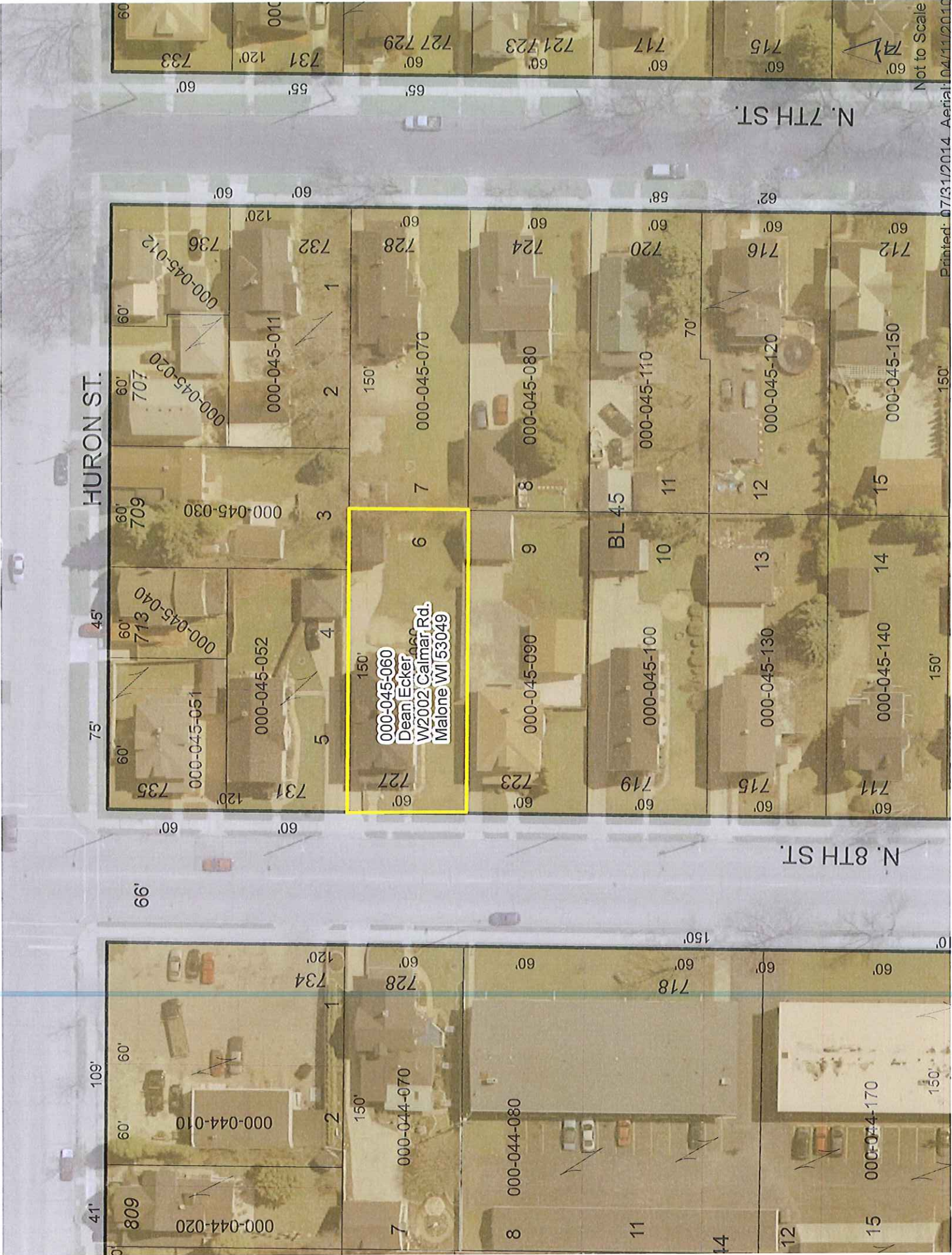
Sincerely,

*Cheryl M. Duchow*

Cheryl M. Duchow  
Manitowoc County Treasurer

*cc: Plan*

Enclosures



HURON ST.

N. 7TH ST.

N. 8TH ST.

000-045-060  
Dean Ecker  
W2002 Calmar Rd.  
Malone WI 53049

45'

75'

41'

109'

66'

150'

60'

60'

60'

60'

60'

60'

60'

60'

60'

60'

60'

60'

60'

120'

120'

120'

120'

120'

120'

120'

120'

120'

120'

120'

60'

60'

60'

60'

60'

60'

60'

60'

60'

60'

60'

60'

60'

60'

60'

60'

60'

60'

60'

60'

60'

60'

60'

60'

60'

60'

60'

60'

60'

60'

60'

60'

60'

60'

60'

60'

60'

60'

60'

60'

60'

60'

60'

60'

60'

60'

60'

60'

60'

60'

60'

60'

60'

60'

60'

60'

60'

60'

60'

60'

60'

60'

60'

60'

60'

60'

60'

60'

60'

60'

60'

60'

60'

60'

60'

60'

60'

60'

60'

60'

60'

60'

60'

60'

60'

60'

60'

60'

60'

60'

60'

60'

60'

60'

60'

60'

60'

60'

60'

60'

60'

60'

60'

60'

60'

60'

60'

60'

60'

60'

60'

60'

60'

60'

60'

60'

60'

60'

60'

60'

60'

60'

60'

60'

60'

60'

60'

60'

60'

60'

60'

60'

60'

60'

60'

60'

60'

60'

60'

60'

60'

60'

60'

60'

60'

60'

60'

60'

60'

60'

60'

60'

60'

60'

60'

60'

60'

60'

60'

60'

60'

60'

60'

60'

60'

60'

60'

60'

60'

60'

60'

60'

60'

60'

60'

60'

60'

60'

60'

60'

60'

60'

60'

60'

60'

60'

60'

60'

60'

60'

60'

60'

60'

60'

60'

60'

60'

60'

60'

60'

60'

60'

60'

60'

60'

60'

60'

60'

60'

60'

60'

60'

60'

60'

60'

60'

60'

60'

60'

60'

60'

60'

60'

60'

60'

60'

60'

60'

60'

60'

60'

60'

60'

60'

60'

60'

60'

60'

60'

60'

60'

60'

60'

60'

60'

60'

60'

60'

60'

60'

60'

60'

60'

60'

60'

60'

60'

60'

60'

60'

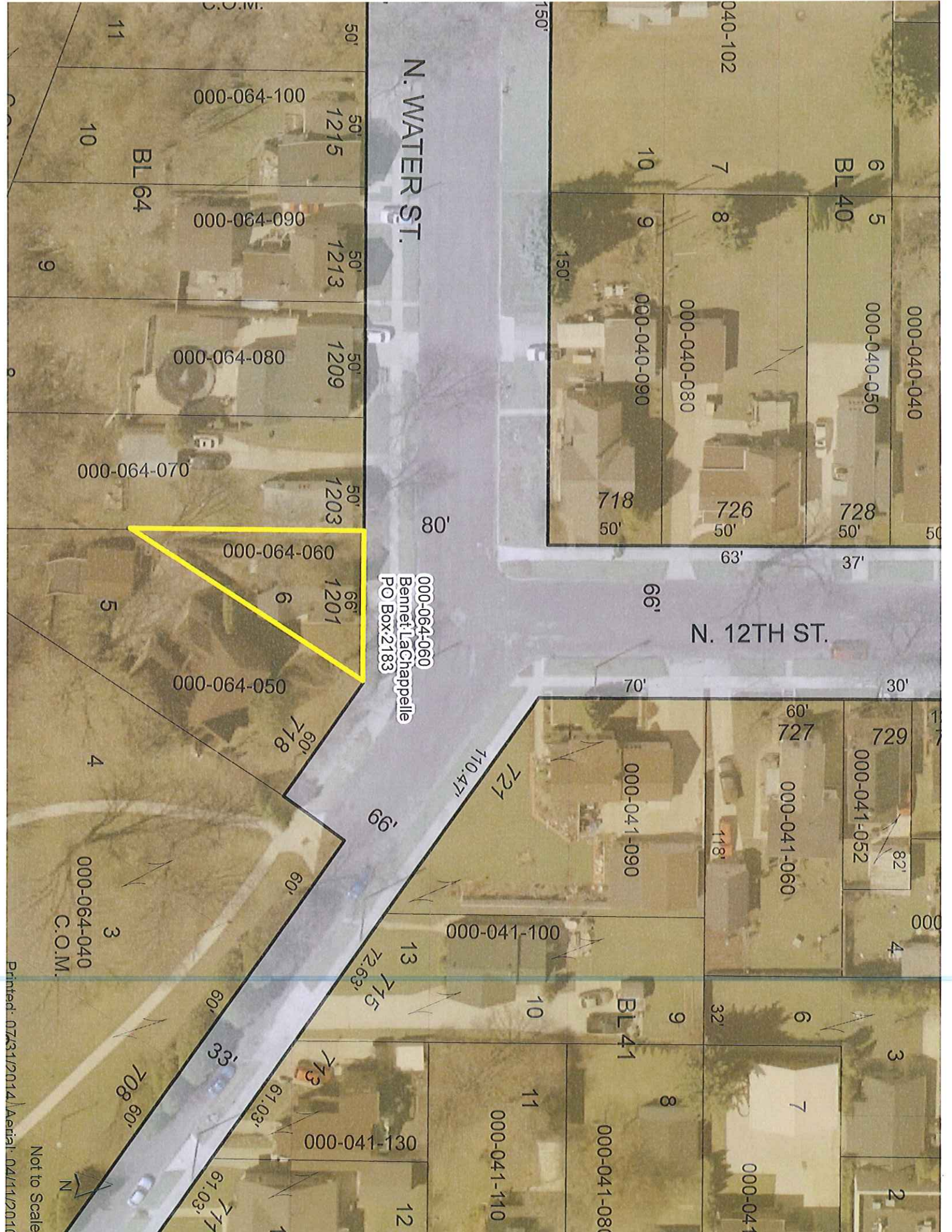
60'

60'

60'

60'

Not to Scale  
Printed: 07/31/2014 Aerial: 04/11/2010



N. WATER ST.

N. 12TH ST.

000-064-060  
Bennett LaChappelle  
PO Box 2183

000-064-100

000-064-090

000-064-080

000-064-070

000-064-060

000-064-050

000-064-040  
C.O.M.

000-040-040

000-040-050

000-040-080

000-040-090

000-041-052

000-041-060

000-041-090

000-041-100

BL 41

000-041-110

000-041-080

000-041-130

000-041

Printed: 07/31/2014 Aerial: 04/11/2010  
Not to Scale





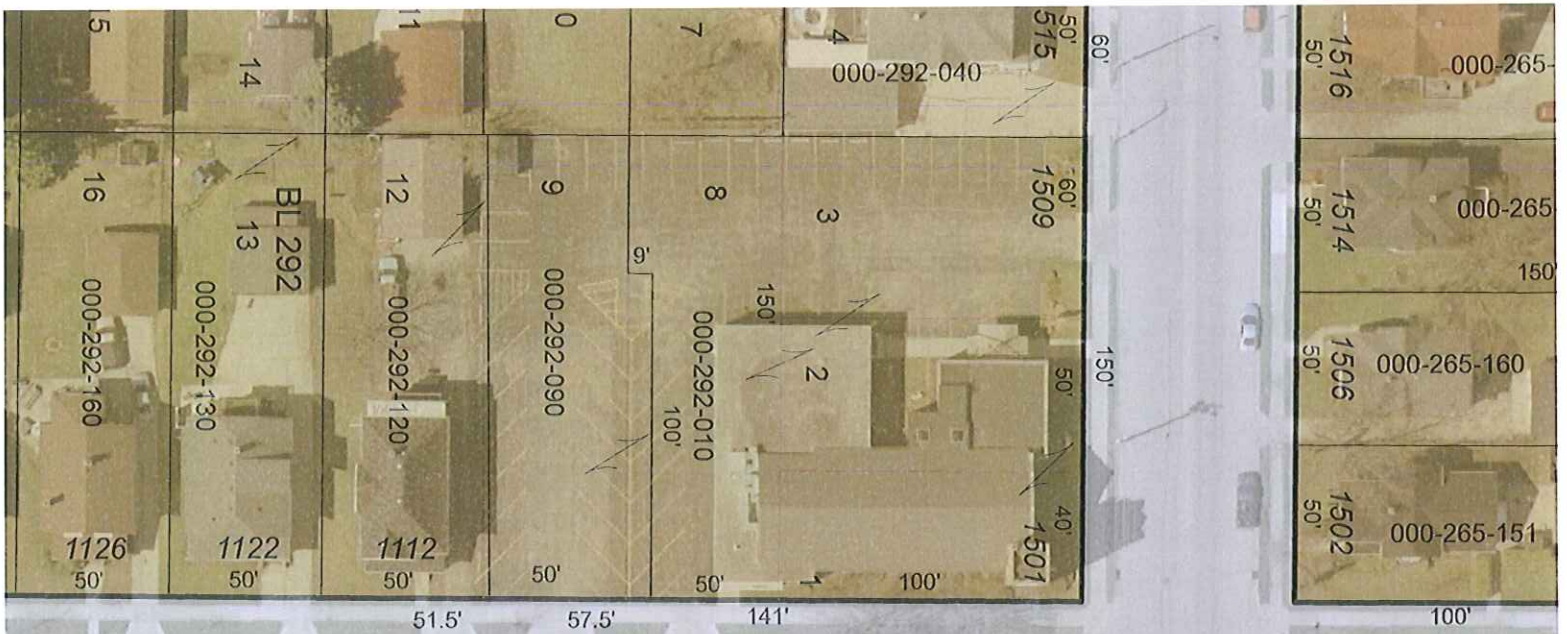
S. 22ND ST.

CLARK ST.

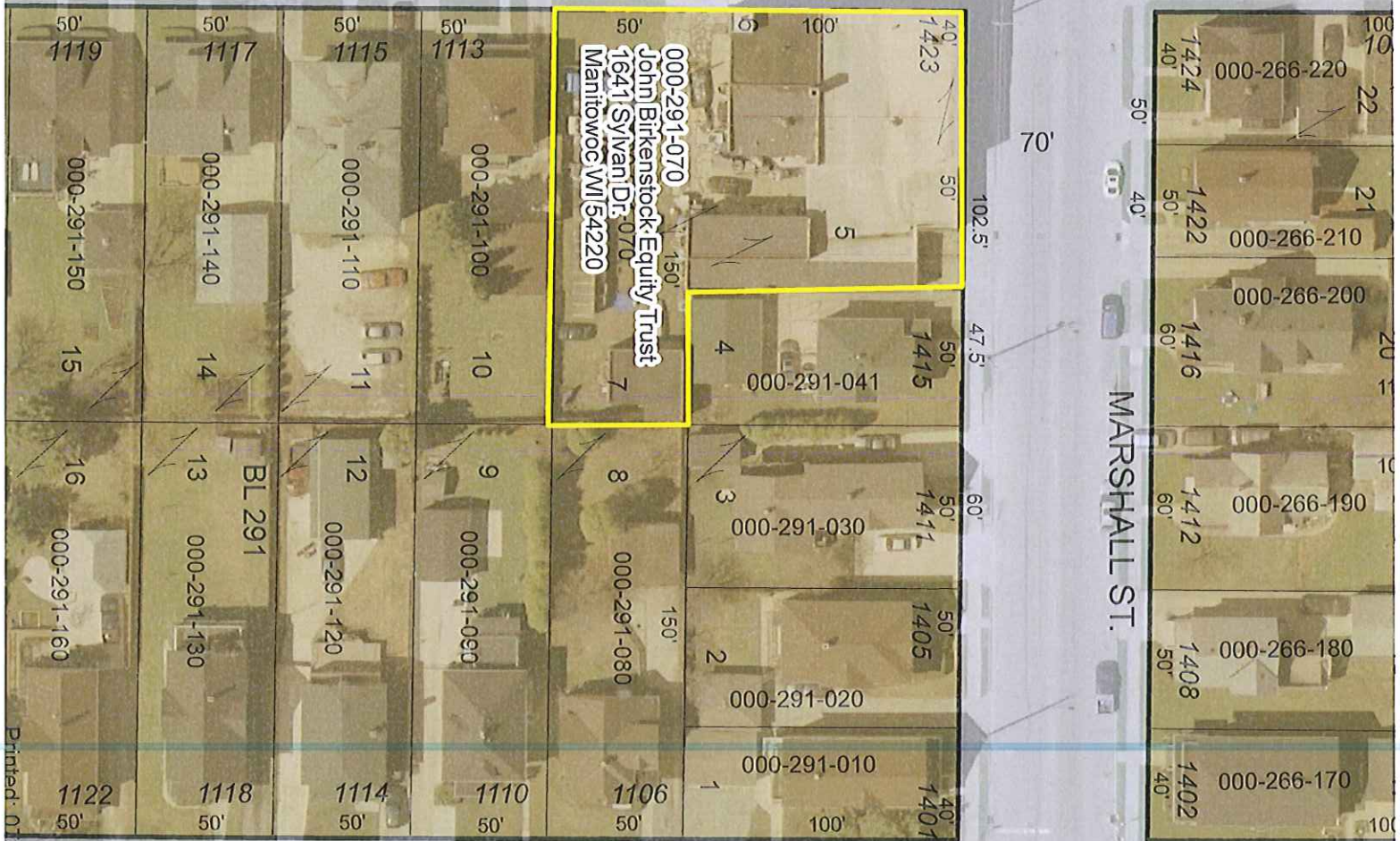
S. 21ST ST.

000-196-160 60  
1 Rick Salta  
PO Box 294  
Manitowoc WI 54220

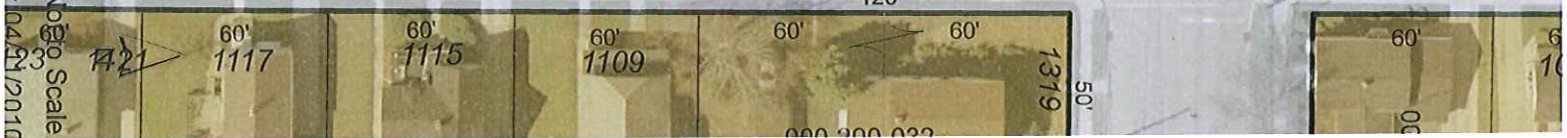




S. 15TH ST.



S. 14TH ST.



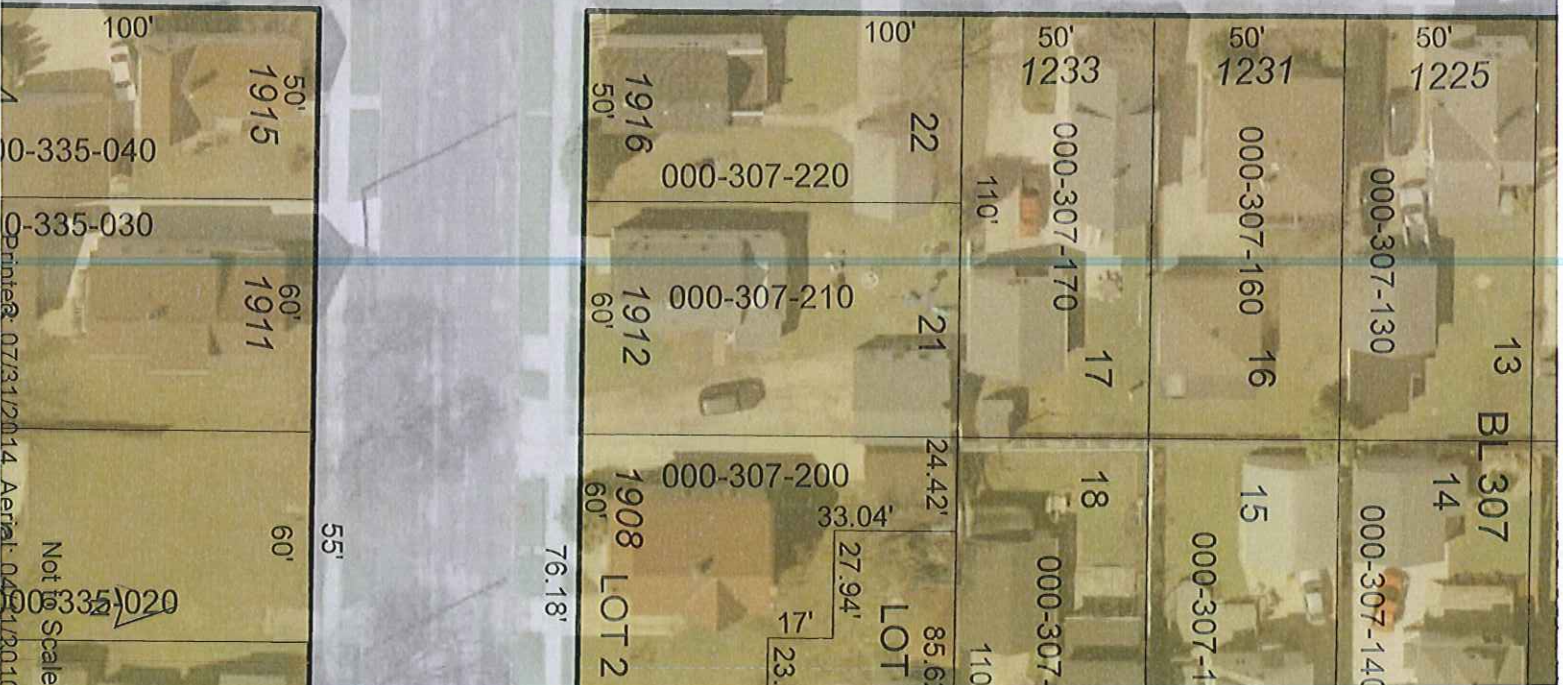




S. 21ST ST.

MADISON ST.

S. 20TH ST.



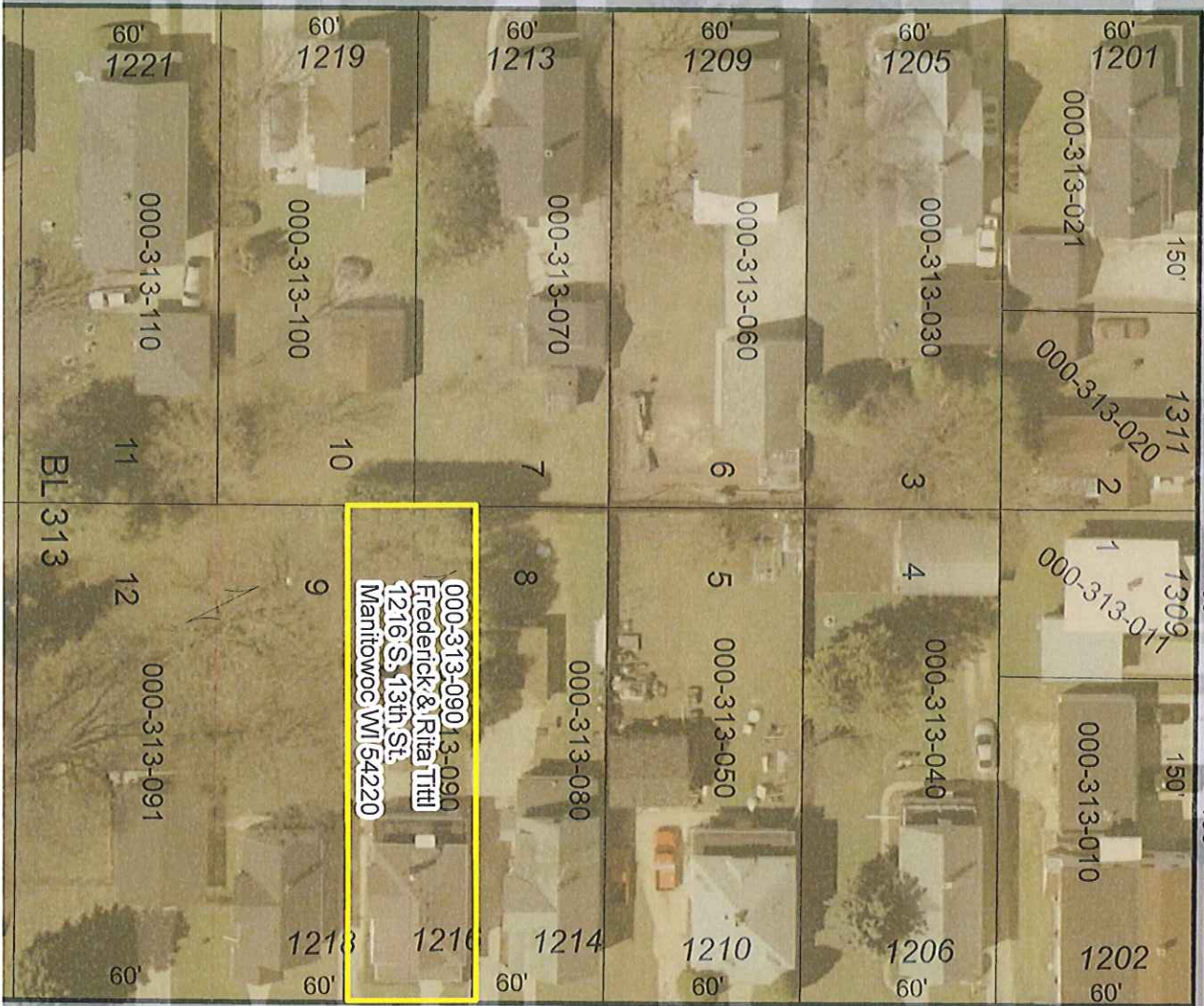
Printed: 07/31/2014 Aerial: 04/21/2010

Not to Scale

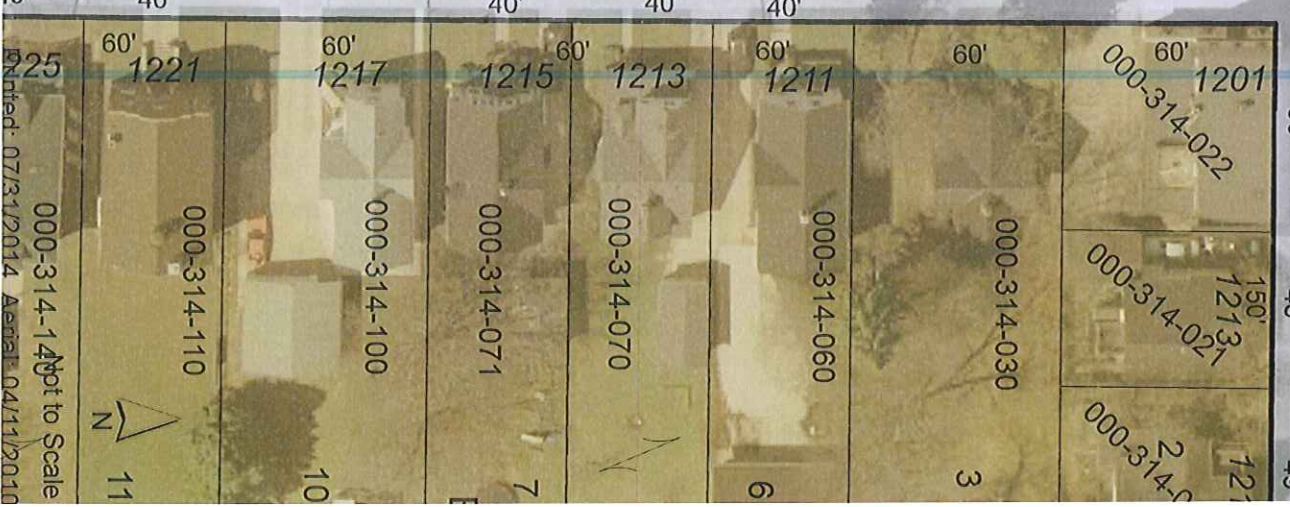
S. 14TH ST.

80'

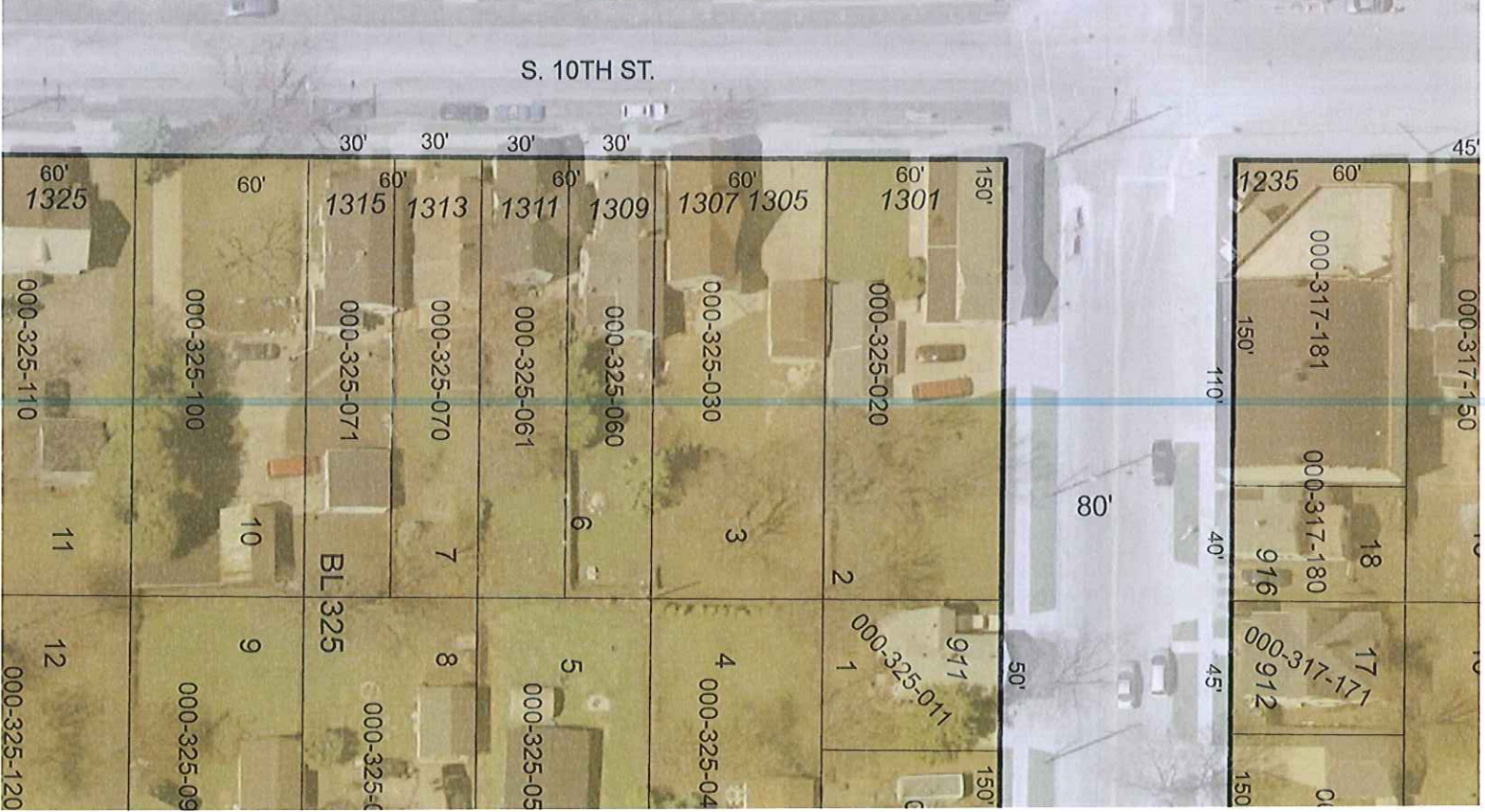
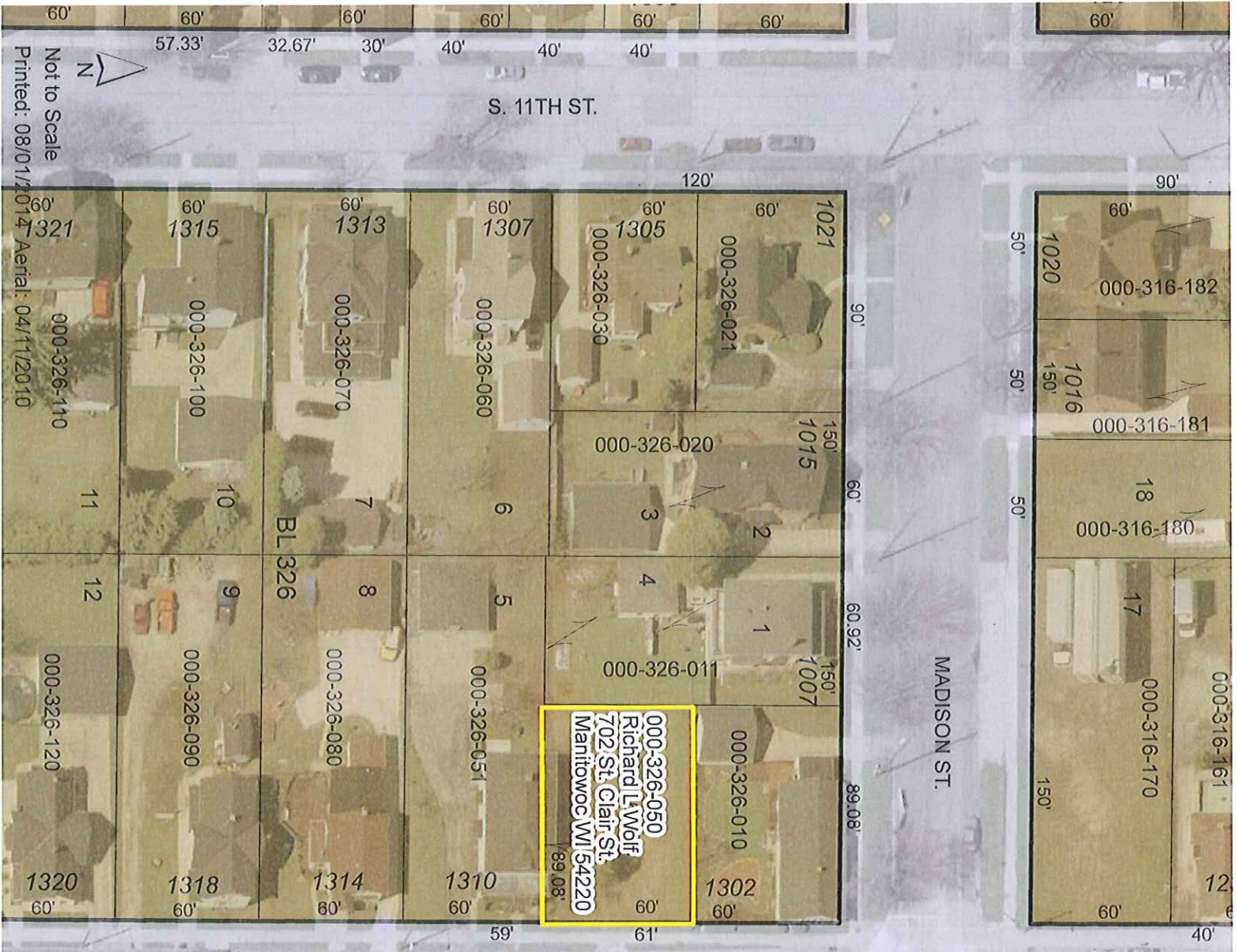
HAMILTON ST.



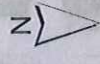
S. 13TH ST.



000-314-110 Not to Scale Printed: 07/31/2014 Aerial: 04/11/2010



Not to Scale  
 Printed: 08/01/2014 Aerial: 04/11/2010



S. 11TH ST.

S. 10TH ST.

MADISON ST.



220-005-190  
220-005-200  
220-005-230  
220-005-240  
220-005-270

3610 3610A  
3604 3604A  
3518  
3512

80'  
80'  
80'  
80'  
118.5'

RASHER ST.

S. 36TH ST.

MADISON ST.

S. 35TH ST.

220-013-060  
Barbara E Engelbrecht  
1307 S. 11th St. A  
Manitowoc WI 54220

90'  
90'  
90'  
90'

3611  
3603

1  
2

220-012-010  
220-012-020

0-012-040  
220-012-030

11TH ST.

4  
3

908 906  
916 912

80'  
85'

220-012-050  
220-012-060

5  
6

220-012-091  
220-012-070

8  
7

920  
920

55'  
55'

220-012-100  
220-012-100

9  
10

922  
926

55'  
55'

220-012-121  
220-012-110

11  
10

926  
926

55'  
55'

82.5'  
82.5'  
82.5'

55'  
55'  
55'

925  
919  
915 911

220-013-091  
220-013-050

8  
5

220-013-040  
220-013-030

4  
3

907 905  
906 904

80'  
80'

220-013-020  
220-013-030

1  
2

129.88'  
128.88'

127.83'  
127.14'

220-013-070  
220-013-100

7  
10

920  
924

55'  
55'

220-013-110  
220-013-121

11  
12

926  
926

55'  
55'

126.45'  
125.76'

220-016-050  
220-016-070  
220-016-080  
220-016-094  
220-016-094

7  
8

905  
909 909A

75'  
75.62'  
75.62'

66.06'  
94.47'  
67.8'

97.35'  
133.49'

220-016-094  
816A

6

24.36'

59.51'  
75.2'

912A 912  
912A 912

1  
2

220-014-010  
220-014-021

89  
921

86.05'  
44.85'

77.22'  
112.7'

918  
918

132.1'

60'  
60'

925  
925

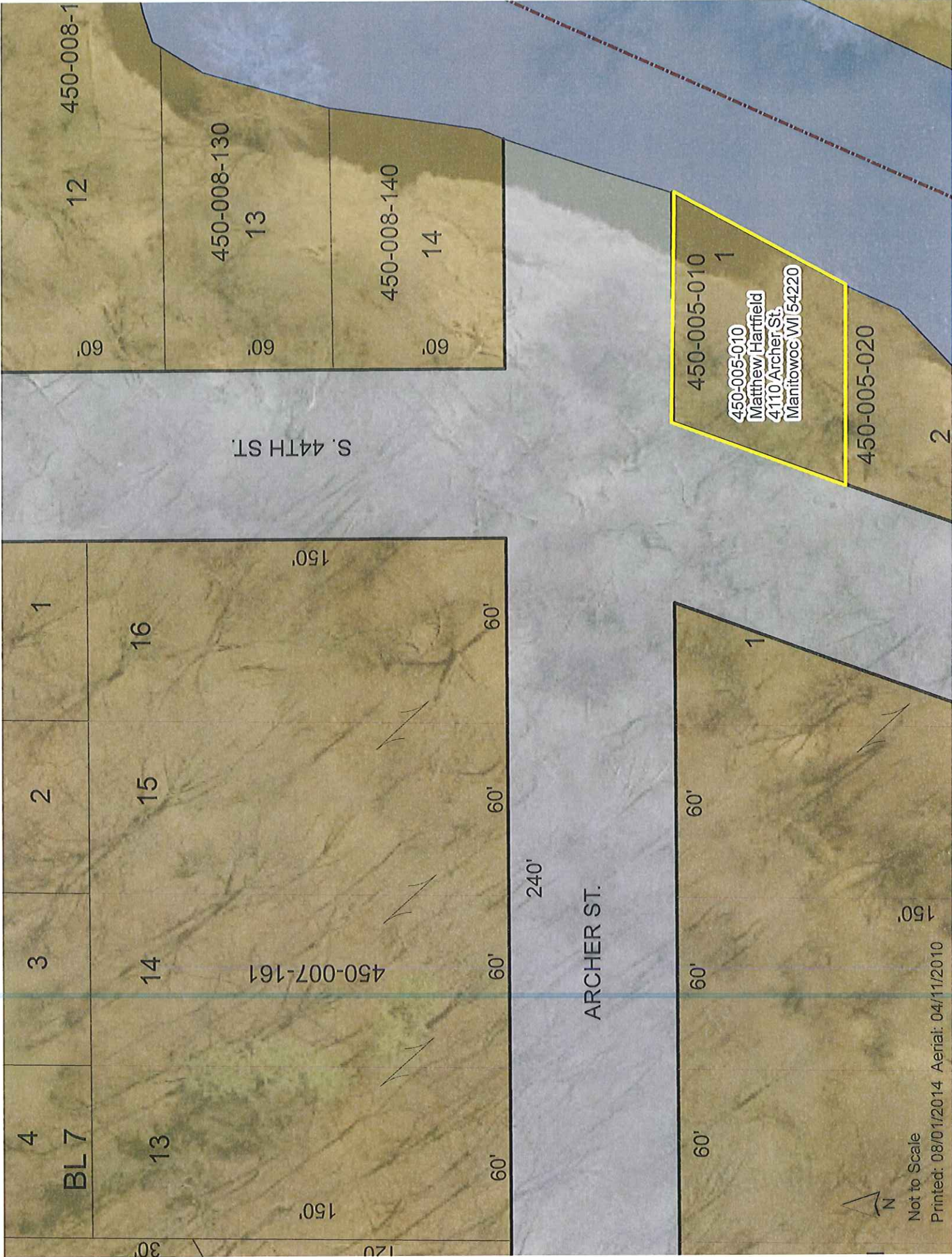
220-014-020  
220-014-020

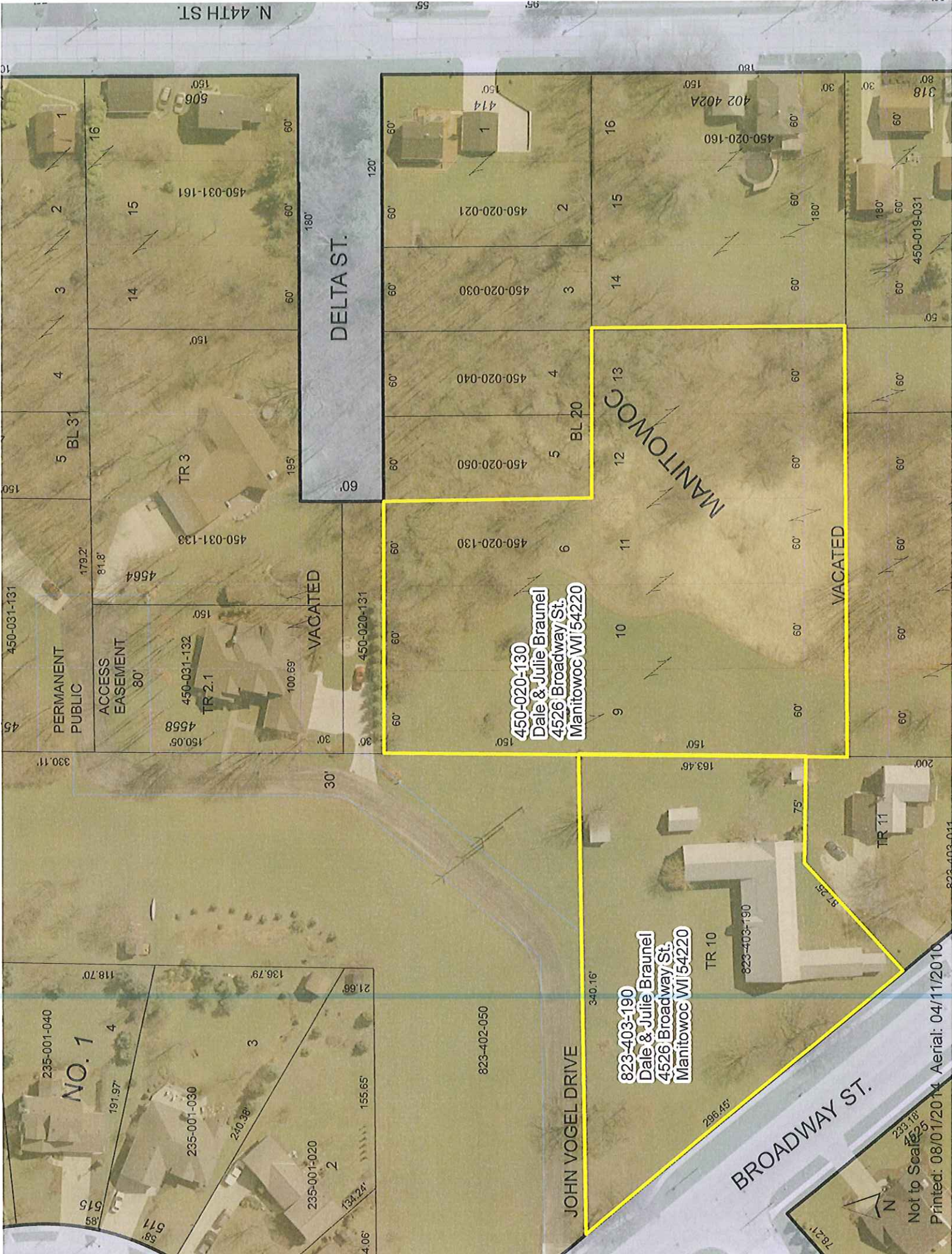
92.76'  
122.34'

97.85'

103.36'

BL 14





N. 44TH ST.

DELTA ST.

PERMANENT PUBLIC

ACCESS EASEMENT

VACATED

MANITOWOC

VACATED

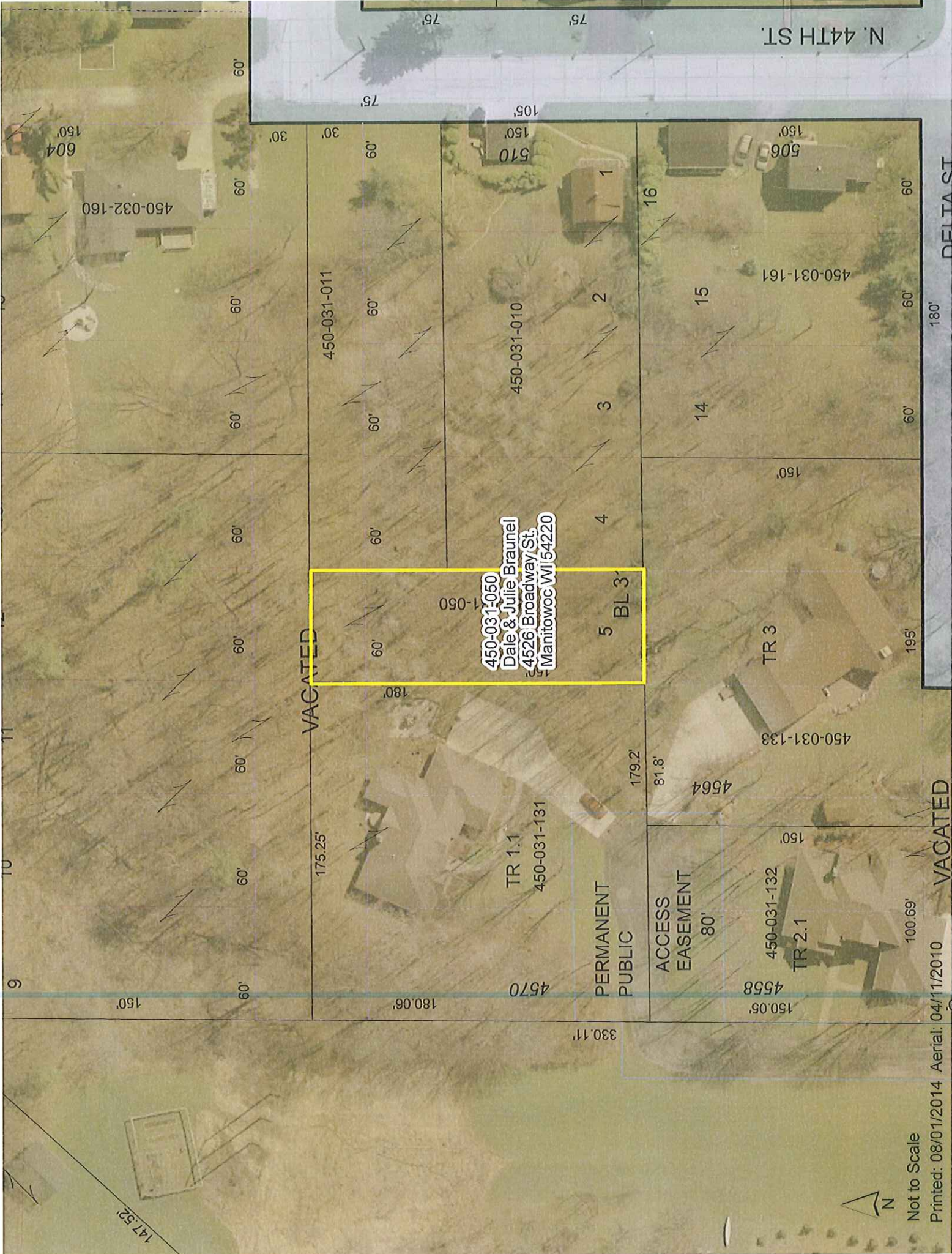
450-020-130  
Dale & Julie Braunel  
4526 Broadway St.  
Manitowoc WI 54220

823-403-190  
Dale & Julie Braunel  
4526 Broadway St.  
Manitowoc WI 54220

JOHN VOGEL DRIVE

BROADWAY ST.

Not to Scale  
Printed: 08/01/2014 Aerial: 04/11/2010



N. 44TH ST.

DELTA ST

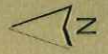
180'

195'

VACATED

VACATED

Not to Scale  
Printed: 08/01/2014 Aerial: 04/11/2010



506  
150'

450-031-161

15

14

16

1

2

3

4

5

BL 3'

510  
150'

450-031-010

450-031-050

Dale & Julie Braunel  
4526 Broadway St.  
Manitowoc WI 54220

450-031-011

175.25'

VACATED

60'

30'

60'

60'

60'

60'

60'

60'

60'

60'

60'

60'

60'

60'

60'

60'

60'

450-032-160

604  
150'

450-031-133

4564

179.2'

81.8'

450-031-132

4558  
150.05'

TR 2.1

ACCESS  
EASEMENT  
80'

PERMANENT  
PUBLIC

TR 1.1  
450-031-131

4570

180'

180.06'

330.11'

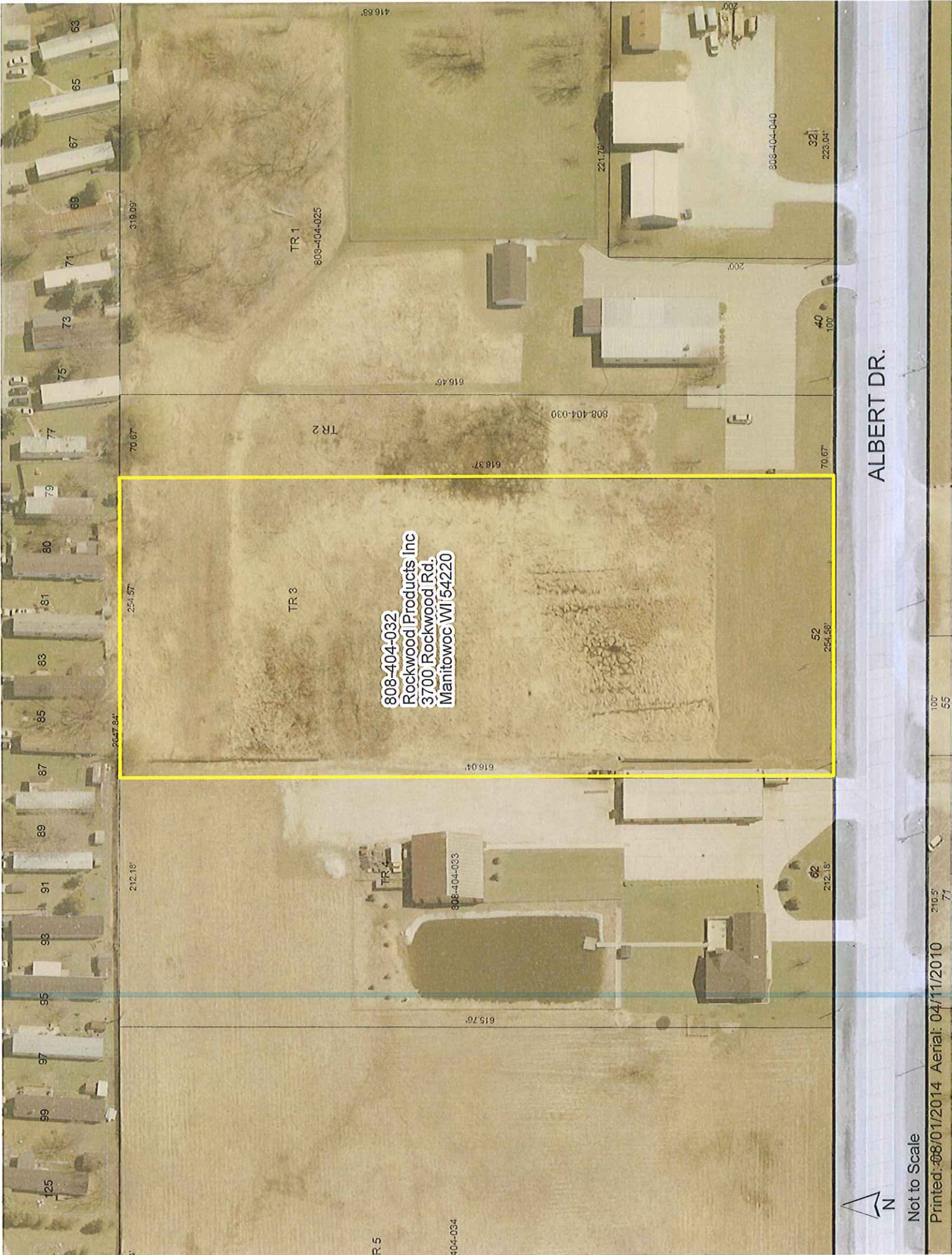
147.52'

9

10

11

12



808-404-032  
Rockwood Products Inc  
3700 Rockwood Rd,  
Manitowoc WI 54220

TR 1  
808-404-025

TR 2

TR 3

TR 4  
808-404-033

TR 5  
404-034

ALBERT DR.



Not to Scale

Printed: 08/01/2014 Aerial: 04/11/2010

100' 55

210.5' 77