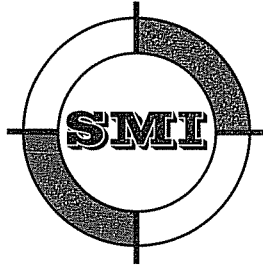


LPI
4-7-14

\$350.00 Paid

14-483



SMT
CIVIL AND STRUCTURAL ENGINEERS
102 REVERE DRIVE
MANITOWOC WI 54220-3147
PHONE 920-684-5583 • FAX 920-684-5584
WEB SITE: www.smimanitowoc.com

March 21st, 2014

MAYOR AND CITY COUNCIL
900 QUAY STREET
MANITOWOC WI 54220

Dear Mayor and City Council:

As representatives the Manitowoc Lakebreeze Apartments, LLC and WLC, LLC we are hereby requesting a change to the official map. The proposed change eliminates 2 streets that run to the east off of Johnston Drive and are approximately 1430 feet and 1720 feet north of East Albert Drive. The change is being requested to accommodate an apartment project. The attached sketches show the proposed changes to the official map.

Very truly yours,
SMT

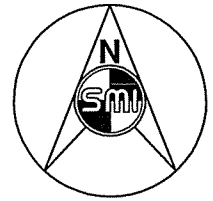
Paul M. Steinbrecher, P.E., R.L.S.

RECEIVED

MAR 25 2014

CITY CLERKS OFFICE

cc: City Planner, City Engineer, Lakebreeze



SCALE IN FEET



90'

**OFFICIAL MAP CHANGE
REMOVE THESE 2 STREETS**

JOHNSTON DRIVE

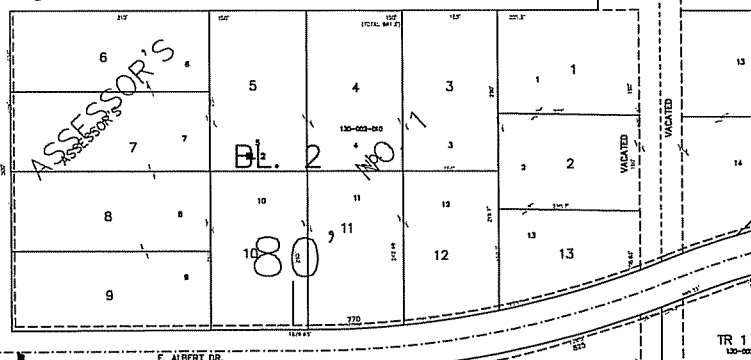
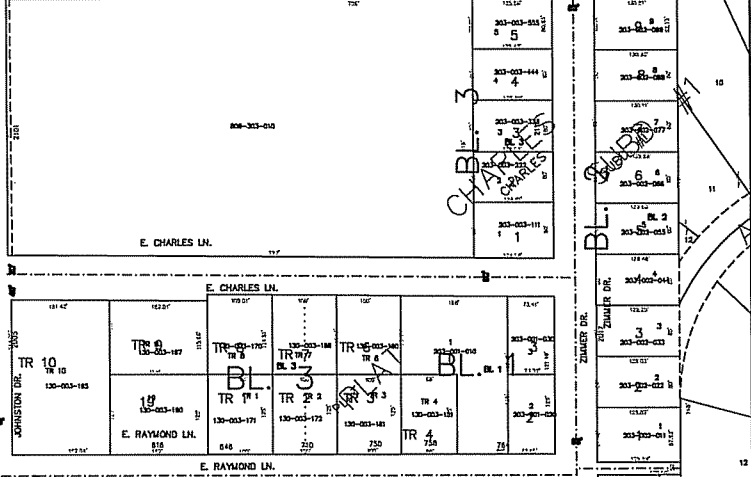
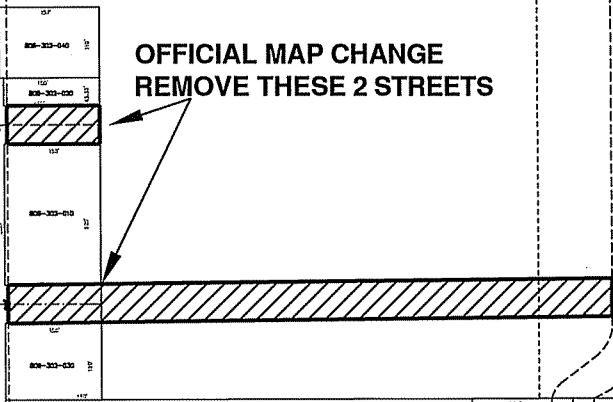
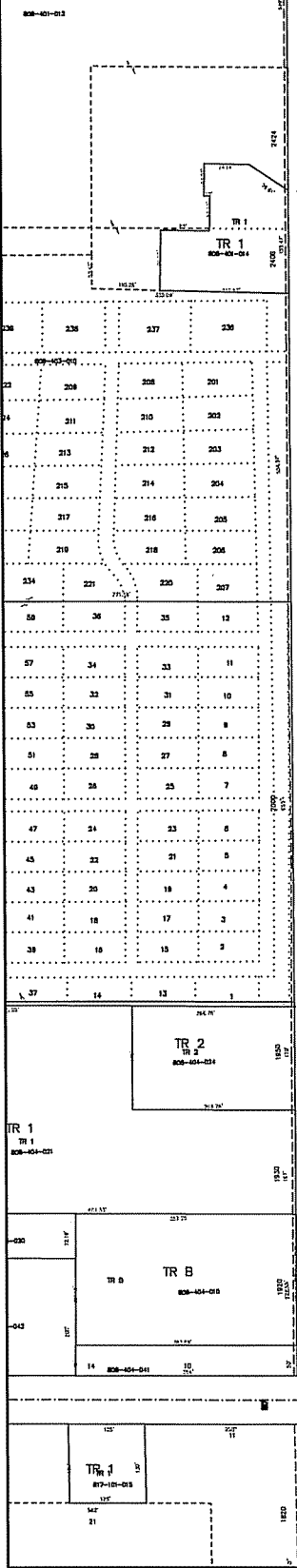
E. CHARLES LN.

E. CHARLES LN.

E. RAYMOND LN.

E. ALBERT DR.

**OFFICIAL MAP CHANGE
LAKEBREEZE APARTMENTS**



CLIENT: LAKEBREEZE APARTMENTS
ADDRESS:
MANITOWOC WI 54220
920-000-0000
DATE: ___ JOB NO.: ___ CAD FILE: ___



STEINBRECHER & MENEAU, INC.
ENGINEERS & SURVEYORS
102 REVERE DRIVE
MANITOWOC, WISCONSIN 54220-3147
PHONE 920-684-5583 FAX 920-684-5584