

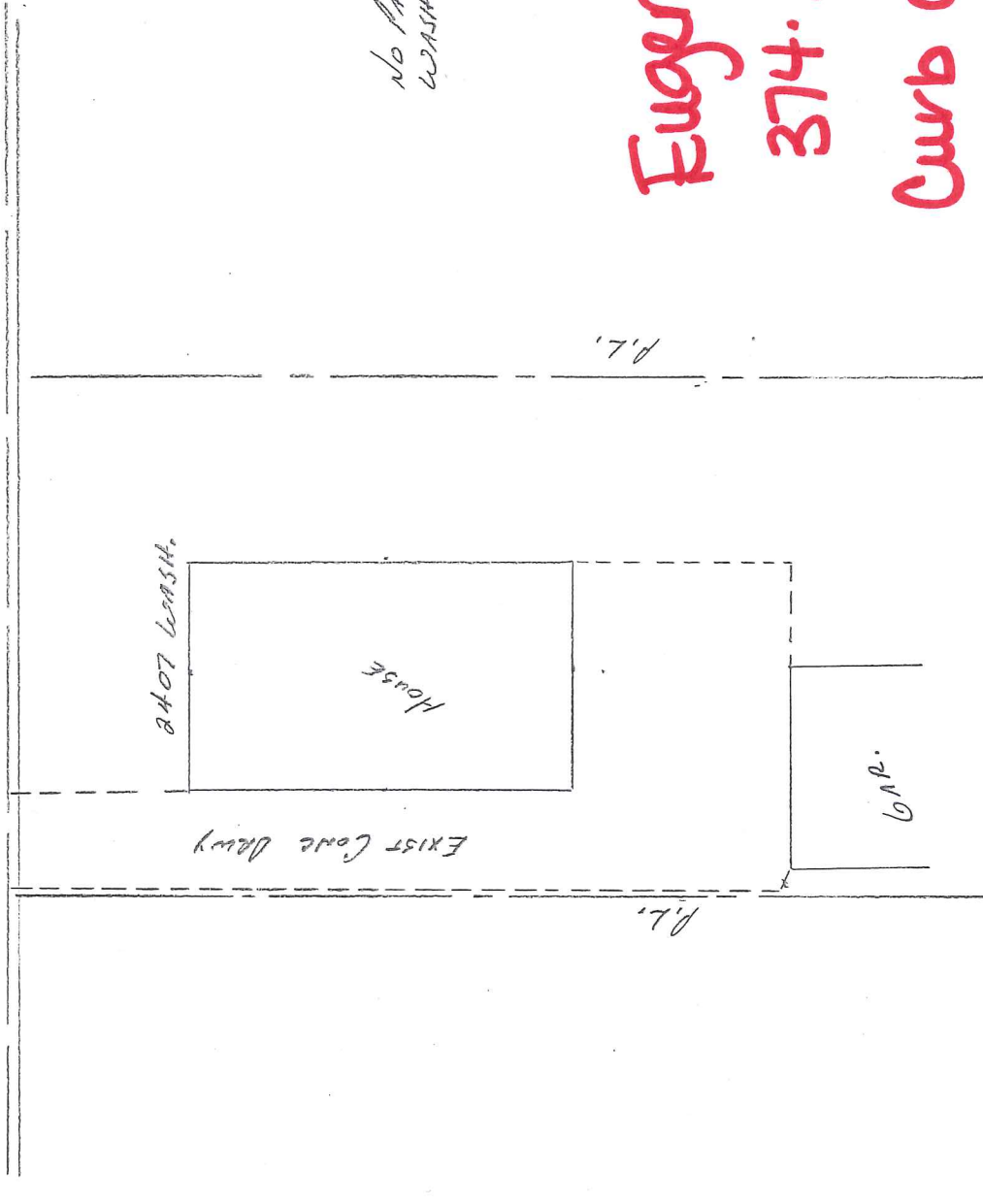
WASHINGTON ST.

14' CURB OPENING



CURB
POWER POLE

SWIK



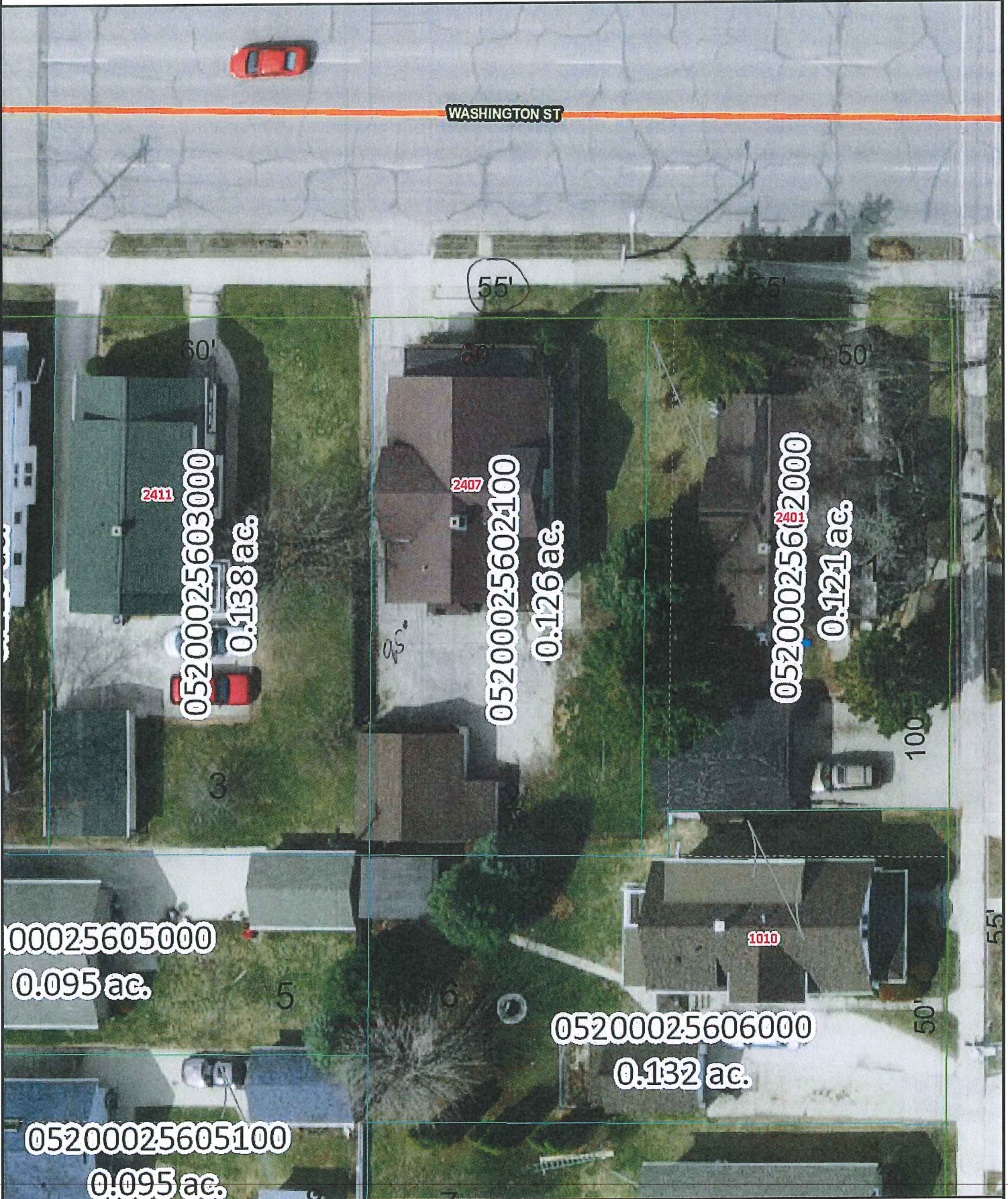
1" = 20' ±

NO PARKING ALLOWED ON
WASHINGTON STREET

Eugene Snyder

374.1923

Curb cut exists
request for approach
+ parking pad.





03.17.2016 09:32



03.17.2016 09:31



03.17.2016 09:32



03.17.2016 09:33