

LPI
1-18-16

16-020

ORDINANCE

An Ordinance amending Section 22.010 of the Municipal Code entitled: "Official Map - Master Subdivision Plans".

The Mayor and Common Council of the City of Manitowoc do ordain as follows:

SECTION 1: Section 22.010 of the Municipal Code is herewith amended to read as follows:

The Official Map System of the City of Manitowoc is herewith amended being in the Southwest 1/4 of the Northeast 1/4 and the Southeast 1/4 of the Northwest 1/4, Section 6, Township 18 North, Range 24 East, City of Manitowoc, Manitowoc County, Wisconsin and all according to the attached map.

SECTION 2: The revisor of the Municipal Code is hereby authorized to place this amendment in sequential, chronological order in the Manitowoc Municipal Code in accordance with Common Council's authority to change or add to the Official Map in accordance with Chapter 62 of the State law.

SECTION 3: This Ordinance shall be in full force and effect on the day after its publication.

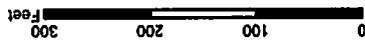
INTRODUCED JAN 18 2016

ADOPTED _____

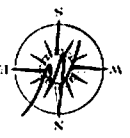
APPROVED _____

Justin M. Nickels, Mayor

Fiscal Impact:
Funding Source:
Finance Director Approval:
Approved as to form:

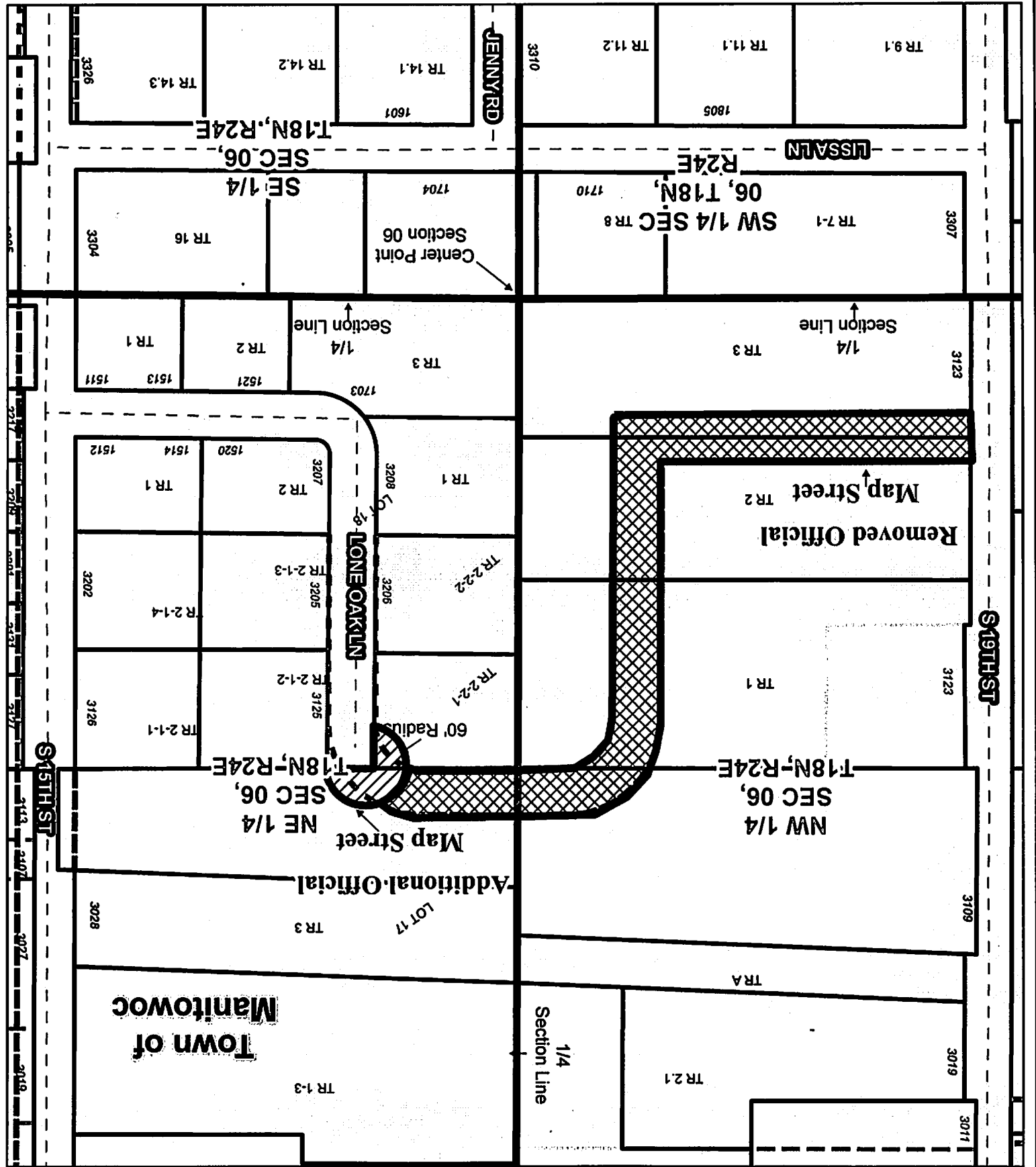


Prepared by City of Manitowoc
 Planning Department
 www.manitowoc.org
 Map File No: 1207/2015
 Y:\Planning\PC Plan Commission\Actions 2015\PC34-2015 Schulte Official Map Amendment
 DISCLAIMER: Maps and associated data are believed to be accurate, but are not
 warranted. This information is not intended for legal, survey, or other related uses.
 Please obtain the original recorded documents for legal or survey information.



ADDITION TO THE OFFICIAL MAP
REMOVED FROM THE OFFICIAL MAP

OFFICIAL MAP AMENDMENT
CITY OF MANITOWOC, WI



Town of Manitowoc