

City of Manitowoc

ENGINEERING DEPARTMENT
 Director of Public Infrastructure DAN KOSKI, P.E.
 PROJECT ENGINEER GREGORY MENIKEL, P.E.



2023 CONCRETE PAVING PROGRAM I

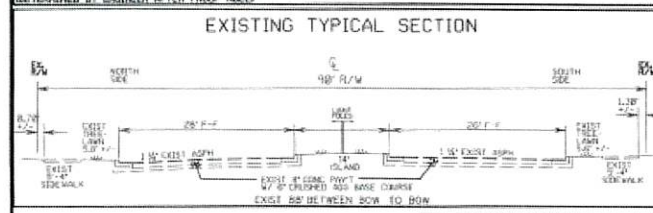
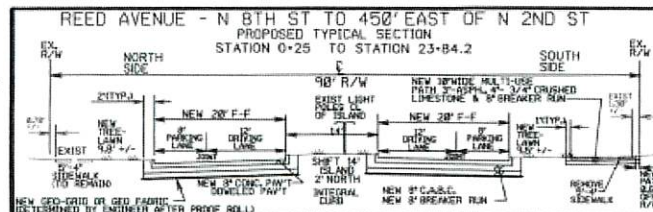
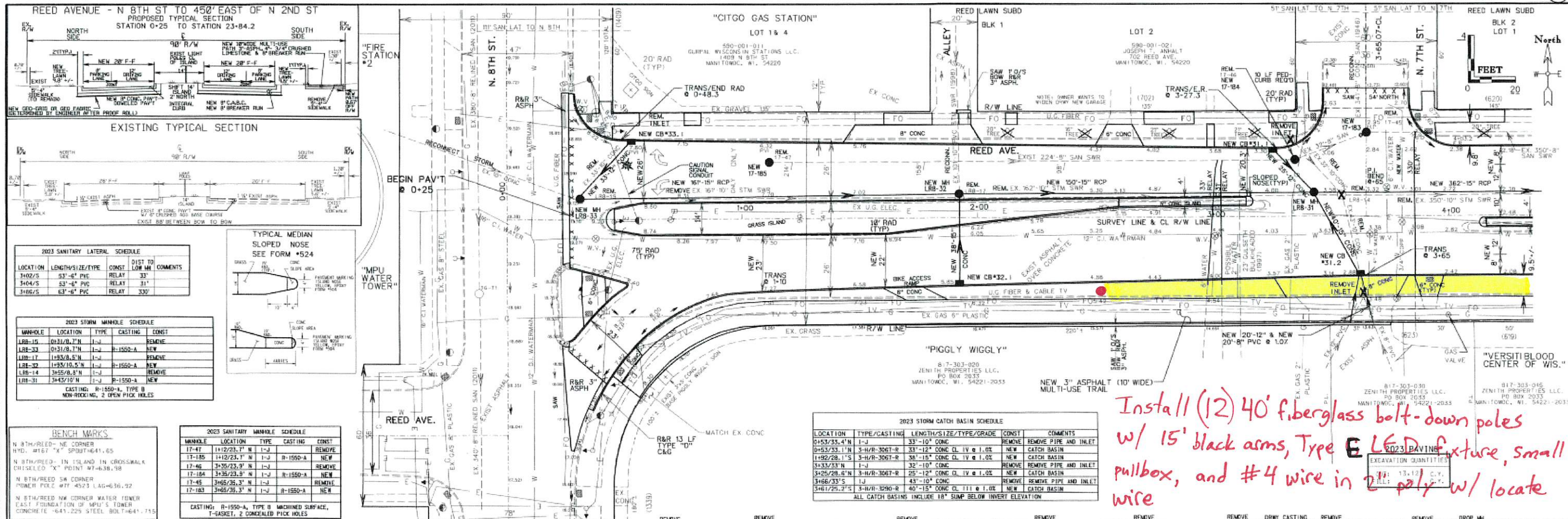
Contract No. WS-23-01

- CONCRETE PAVING,
SANITARY / STORM
SEWERS & ASPHALT
TRAIL (#)
- TRAFFIC CONTROL (TC)
- EROSION CONTROL (EC)
- PAVEMENT MARKING (P)
- WATER-MAIN (W)

TYPE 'D' INLET PROTECTION

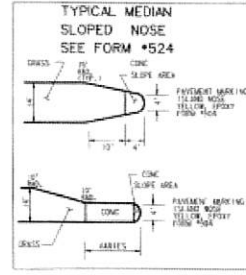
LEGEND	
U	HYDRANT
SP	POLE
24-01	LIGHT POLE
016	EXIST STORM INLET
017	PROPOSED STORM INLET
018	TREE (Cool form)
019	TREE (Cool form)
020	STUMP
021	EXIST SEWER & M.H.
022	PROPOSED SEWER & M.H.
023	WATERMAIN WAPPLES
024	WATERMAIN WAPPLE VALVE
025	TELEPHONE MANHOLE
026	PROPOSED UTILITY CURB
027	PROPOSED CONC. CURB & BUTTER
028	EXISTING CURB TO REMAIN
029	EXISTING CURB REPLACE
030	FUTURE CURB

* INFORMATION BELIEVED ACCURATE BUT NOT WARRANTED



2023 SANITARY LATERAL SCHEDULE

LOCATION	LENGTH/SIZE/TYPE	CONST	DIST TO LOW LN	COMMENTS
3402/S	53'-6" PVC RELAY	33'		
3404/S	53'-6" PVC RELAY	31'		
3406/S	53'-6" PVC RELAY	33'		



2023 STORM MANHOLE SCHEDULE

MANHOLE	LOCATION	TYPE	CASTING	CONST
LRB-15	0+31/8.7' N	1-J	R-1550-A	REMOVE
LRB-33	0+31/8.7' N	1-J	R-1550-A	NEW
LRB-17	1+33/8.5' N	1-J	R-1550-A	REMOVE
LRB-32	1+33/8.5' N	1-J	R-1550-A	NEW
LRB-14	3+55/8.8' N	1-J	R-1550-A	REMOVE
LRB-31	3+55/8.8' N	1-J	R-1550-A	NEW

BENCH MARKS

N 8TH/REED - NE CORNER HYD. #167 "X" SPOUT#641.65
N 8TH/REED - IN ISLAND IN CROSSWALK CIRCLED "X" POINT #7-638.98
N 8TH/REED SW CORNER POWER POLE #77 4523 LAG#636.92
N 8TH/REED NW CORNER WATER TOWER EAST FOUNDATION OF MPU'S TOWER CONCRETE #641.225 STEEL BOLT#641.715

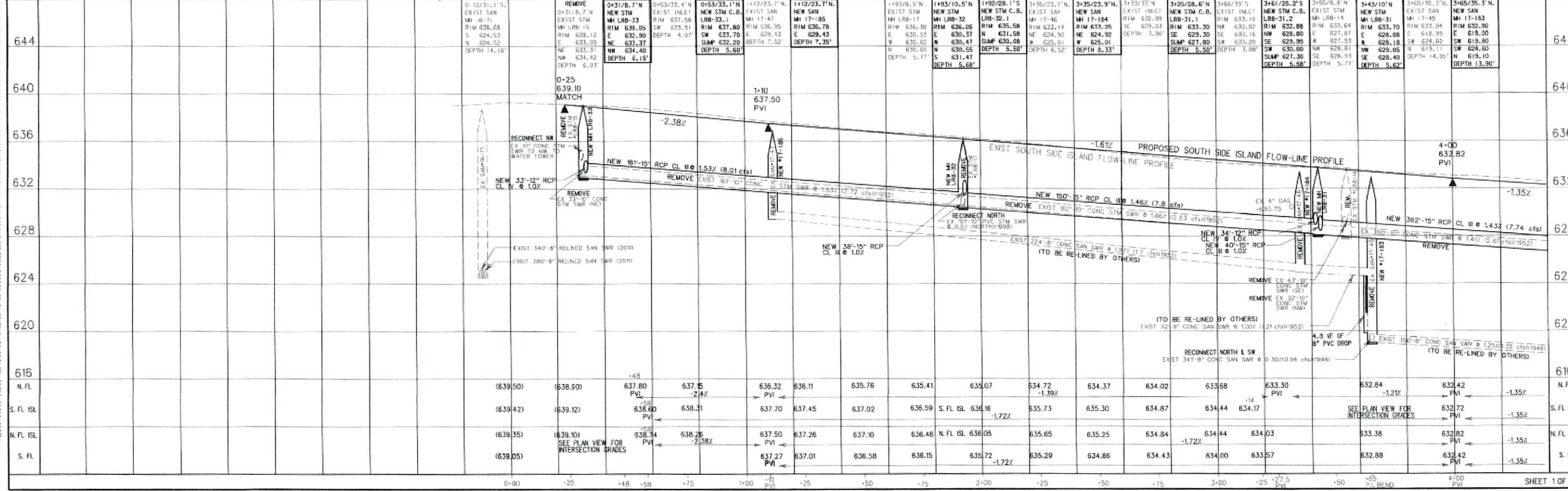
2023 SANITARY MANHOLE SCHEDULE

MANHOLE	LOCATION	TYPE	CASTING	CONST
0+12/31.1' S	EXIST SAN			
17-47	1+12/23.7' N	1-J	R-1550-A	REMOVE
17-185	1+12/23.7' N	1-J	R-1550-A	NEW
17-46	3+35/23.9' N	1-J	R-1550-A	REMOVE
17-184	3+35/23.9' N	1-J	R-1550-A	NEW
17-45	3+65/26.3' N	1-J	R-1550-A	REMOVE
17-183	3+65/26.3' N	1-J	R-1550-A	NEW

2023 STORM CATCH BASIN SCHEDULE

LOCATION	TYPE/CASTING	LENGTH/SIZE/TYPE/GRADE	CONST	COMMENTS
0+53/33.4' N	1-J	33'-10" CONC	REMOVE	REMOVE PIPE AND INLET
0+53/33.1' N	3-H/R-3067-R	33'-12" CONC CL IV @ 1.0%	NEW	CATCH BASIN
1+92/28.1' S	3-H/R-3067-R	38'-15" CONC CL IV @ 1.0%	NEW	CATCH BASIN
5+33/23' N	1-J	32'-10" CONC	REMOVE	REMOVE PIPE AND INLET
3+25/28.6' N	3-H/R-3067-R	25'-12" CONC CL IV @ 1.0%	NEW	CATCH BASIN
3+66/33' S	1-J	43'-10" CONC	REMOVE	REMOVE PIPE AND INLET
3+61/25.2' S	3-H/R-3067-R	40'-15" CONC CL III @ 1.0%	NEW	CATCH BASIN

Install (12) 40' fiberglass bolt-down poles w/ 15' black arms, Type E LED fixture, small pullbox, and #4 wire in 2" poly w/ locate wire



LEVELS

STATION	N.F.L.	S.F.L. ISL	N.F.L. ISL	S.F.L.
644	(639.50)	(639.42)	(639.35)	(639.05)
640				
636				
632				
628				
624				
620				
616				



2023 STORM CATCH BASIN SCHEDULE						
LOCATION	TYPE/CASTING	LENGTH/SIZE	TYPE/GRADE	CONST	COMMENTS	
3466/33'S	1-J	43'-10"	CONC	REMOVE	REMOVE PIPE AND INLET	
3461/25.2'S	3-H/R-3250-R	40'-15"	CONC CL III @ 1.0%	NEW	CATCH BASIN	
6177/33'N	1-J	37'-10"	CONC	REMOVE	REMOVE PIPE AND INLET	
6175/29'N	3-H/R-3067-R	34'-12"	CONC CL IV @ 1.0%	NEW	CATCH BASIN	
7142/33'S	1-J	43'-10"	CONC	REMOVE	REMOVE PIPE AND INLET	
7142/25'S	3-H/R-3067-R	36'-15"	CONC CL III @ 1.0%	NEW	CATCH BASIN	
ALL CATCH BASINS INCLUDE 18" SUMP BELOW INVERT ELEVATION						

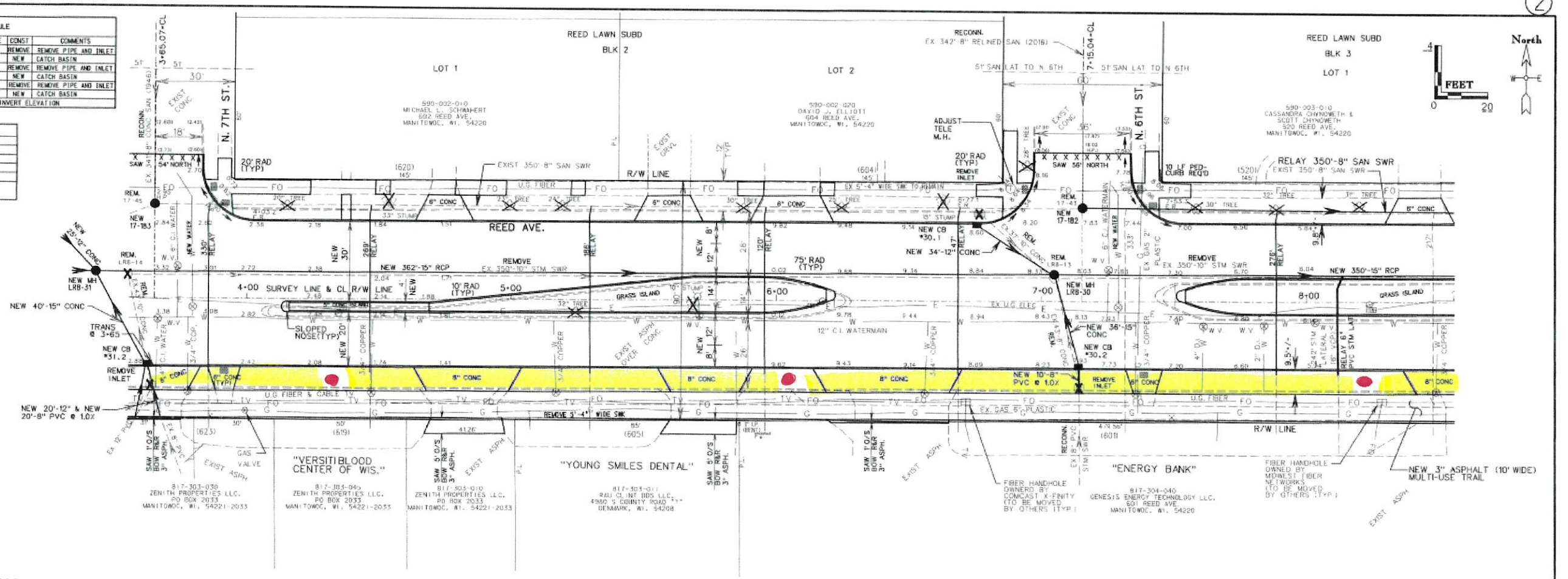
2023 STORM MANHOLE SCHEDULE				
MANHOLE	LOCATION	TYPE	CASTING	CONST
LRB-14	3456/8.9'N	1-J	R-1550-A	REMOVE
LRB-31	3443/10'N	1-J	R-1550-A	REMOVE
LRB-13	705/8.7'N	1-J	R-1550-A	REMOVE
LRB-30	705/10'N	1-J	R-1550-A	REMOVE
CASTING: R-1550-A, TYPE B NON-ROCKING, 2 OPEN PICK HOLES				

2023 STORM LATERAL SCHEDULE				
LOCATION	LENGTH/SIZE/TYPE	CONST	DIST TO LOW PT	COMMENTS
814/S	30'-6" PVC	RELAY	242'	

2023 SANITARY MANHOLE SCHEDULE				
MANHOLE	LOCATION	TYPE	CASTING	CONST
17-45	3465/35.3'N	1-J	R-1550-A	REMOVE
17-183	3465/35.3'N	1-J	R-1550-A	REMOVE
17-43	715/34.8'N	1-J	R-1550-A	REMOVE
17-182	715/34.8'N	1-J	R-1550-A	REMOVE
CASTING: R-1550-A, TYPE B MICHIGAN SURFACE, 1-GASKET, 2 CONCEALED PICK HOLES				

2023 SANITARY LATERAL SCHEDULE				
LOCATION	LENGTH/SIZE/TYPE	CONST	DIST TO LOW PT	COMMENTS
3466/S	63'-6" PVC	RELAY	330'	
447/S	63'-6" PVC	RELAY	289'	
5430/S	63'-6" PVC	RELAY	188'	
5496/S	63'-6" PVC	RELAY	120'	
648/S	63'-6" PVC	RELAY	41'	
788/S	63'-6" PVC	RELAY	276'	

BENCH MARKS	
N 8TH/REED - NE CORNER	HYD. M&T "X" SPOUT 641.65
N 8TH/REED SW CORNER	POWER POLE #77-4523 L&O-636.92
REED 206' EAST OF N 7TH ST	IN 156 AND HYD. M&AS "X" SPOUT 632.635
N 11TH/REED - SE CORNER AT BOX	CHISELED "X" POINT #5-633.55
N 6TH/REED - SE CORNER AT BOX	CHISELED "X" POINT #5-624.25



ELEVATION	REMOVE		DRIP CASTING		REMOVE		REMOVE		REMOVE		REMOVE		REMOVE		REMOVE		ELEVATION
	LOCATION	TYPE	LENGTH	CONST	LOCATION	TYPE	LENGTH	CONST	LOCATION	TYPE	LENGTH	CONST	LOCATION	TYPE	LENGTH	CONST	
640	3466/33'S	EXIST INLET	184.11		3461/25.2'S	NEW STM C.B.	40'-15"	CONC	3456/8.9'N	EXIST STM	17'-45		6177/33'N	EXIST INLET	174.93		640
636																	636
632																	632
628																	628
624																	624
620																	620
616																	616
612																	612
N.FL																	N.FL
S.FL SL																	S.FL SL
N.FL SL																	N.FL SL
S.FL																	S.FL

DRAWN BY: M.J.
 APPROVED BY: M.J.
 REVISED BY: M.J.
 3-SEC BOOK: 10/18/10, 11/18/10, 12/18/10

LEVELS ON: 1-2, 3, 4, 5, 6, 7, 8, 9, 10, 11, 12, 13, 14, 15, 16, 17, 18, 19, 20, 21, 22, 23, 24, 25, 26, 27, 28, 29, 30, 31, 32, 33, 34, 35, 36, 37, 38, 39, 40, 41, 42, 43, 44, 45, 46, 47, 48, 49, 50, 51, 52, 53, 54, 55, 56, 57, 58, 59, 60, 61, 62



2023 STORM CATCH BASIN SCHEDULE					
LOCATION	TYPE/CASTING	LENGTH/SIZE/TYP/GRADE	CONST	COMMENTS	
10+31/33' N	1-2	30'-10" CONC	REMOVE	REMOVE PIPE AND INLET	
10+25/29' N	5-1/2" R-3067-R	33'-12" CONC CL IV @ 1.0%	NEW	CATCH BASIN	
10+64/23' S	1-2	48'-10" CONC	REMOVE	REMOVE PIPE AND INLET	
10+64/29' S	5-1/2" R-3299-A	36'-15" CONC CL III @ 1.0%	NEW	CATCH BASIN	

ALL CATCH BASINS INCLUDE 18" SUMP BELOW INVERT ELEVATION

2023 STORM MANHOLE SCHEDULE				
MANHOLE	LOCATION	TYPE	CASTING	CONST
LMB-12	10+54/11.3' N	1-2	REMOVE	
LMB-29	10+54/10' N	1-2	R-1550-A	NEW

CASTING: R-1550-A, TYPE B NON-ROCKING, 2 OPEN PICK HOLES

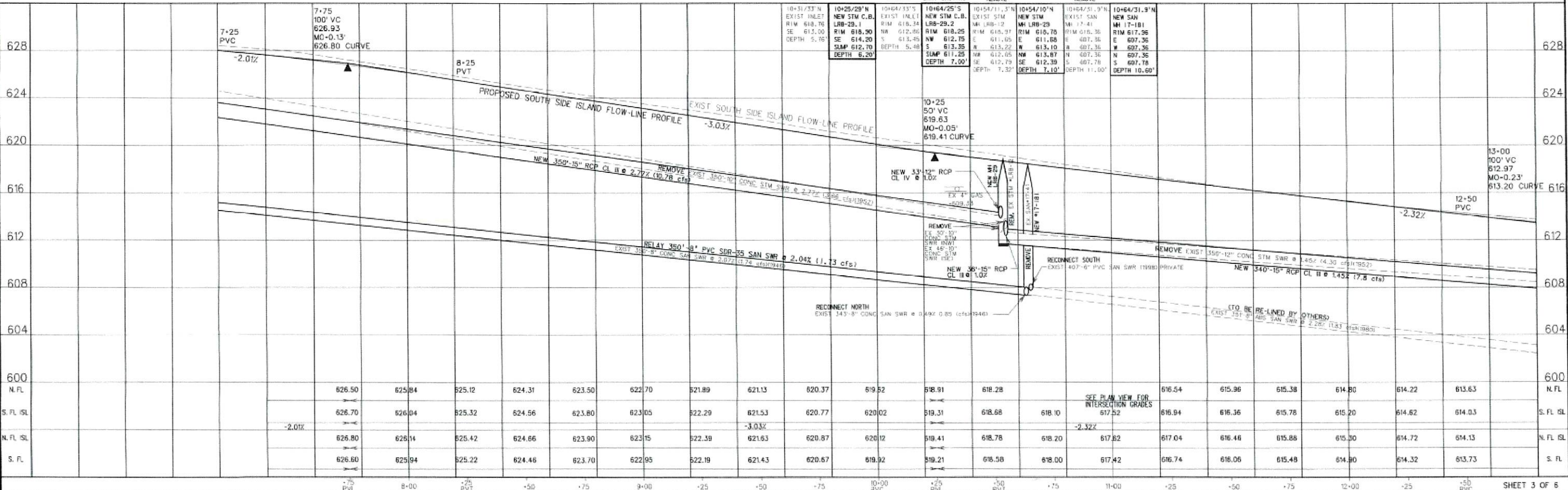
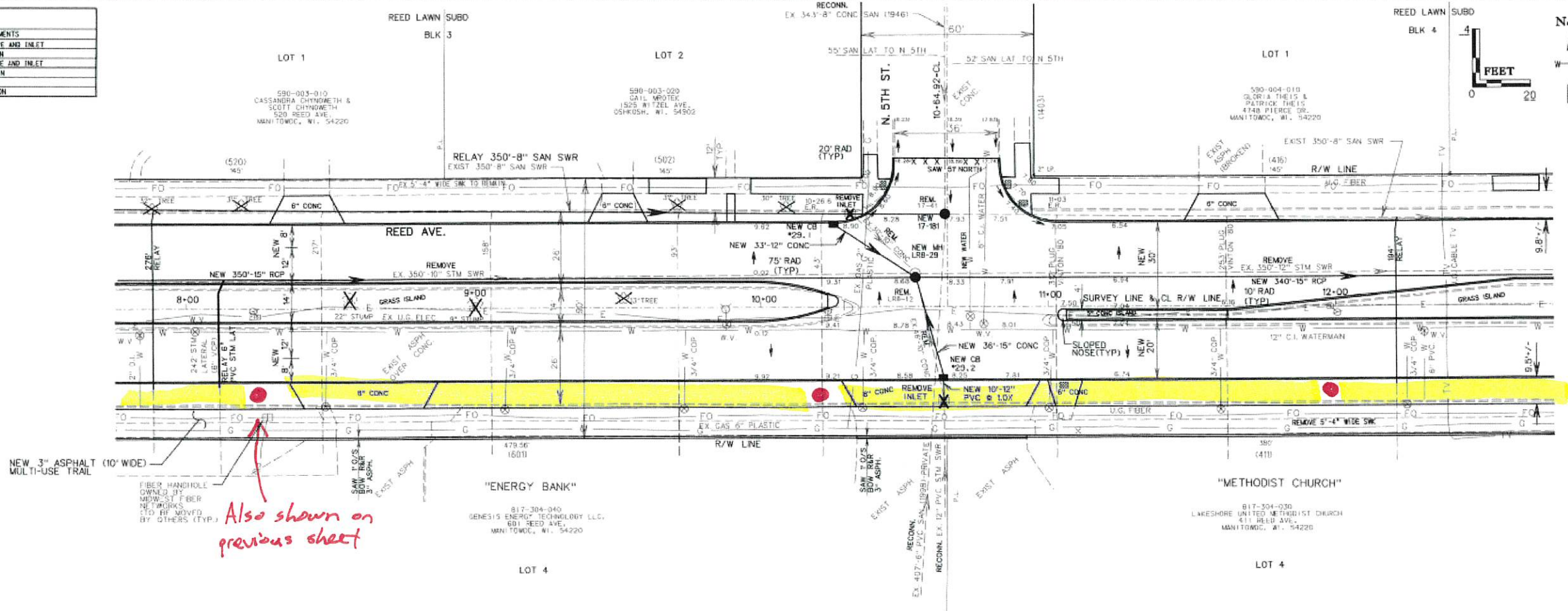
2023 STORM LATERAL SCHEDULE				
LOCATION	LENGTH/SIZE/TYP	CONST	DIST TO LOW PT	COMMENTS
R-14/S	36'-6" PVC	RELAY	242'	

2023 SANITARY MANHOLE SCHEDULE				
MANHOLE	LOCATION	TYPE	CASTING	CONST
17-1	10+64/31.3' N	1-2	REMOVE	
17-1B	10+64/31.3' N	1-2	R-1550-A	NEW

CASTING: R-1550-A, TYPE B MACHINED SURFACE, 1-GASKET, 2 CONCEALED PICK HOLES

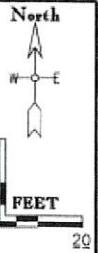
2023 SANITARY LATERAL SCHEDULE				
LOCATION	LENGTH/SIZE/TYP	CONST	DIST TO LOW PT	COMMENTS
11B/S	62'-6" PVC	RELAY	276'	
12B/S	57'-6" PVC	RELAY	194'	

BENCH MARKS	
N 5TH/REED - SE CORNER AT 80W CHISELED "X" POINT #5-626.25	
N 5TH/REED WEST SIDE IN ISLAND HYD. #555 "X" FLANGE 623.12	
N 5TH/REED - SE CORNER AT 80W CHISELED "X" POINT #5-617.81	



DATE: 12/12/22
 DRAWN BY: MZ
 APPROVED BY: [Signature]
 REVISION BY: [Signature]
 X-SEC BOOK: 889705, 1015, Elevation 64-1042

LEVELS ON: 1, 2, 3, 4, 5, 6, 7, 8, 9, 10, 11, 12, 13, 14, 15, 16, 17, 18, 19, 20, 21, 22, 23, 24, 25, 26, 27, 28, 29, 30, 31, 32, 33, 34, 35, 36, 37, 38, 39, 40, 41, 42, 43, 44, 45, 46, 47, 48, 49, 50, 51, 52, 53, 54, 55, 56, 57, 58, 59, 60, 61, 62



2023 STORM CATCH BASIN SCHEDULE

LOCATION	TYPE/CASTING	LENGTH/SIZE/TYPE/GRADE	CONST	COMMENTS
13+72/29'N	IJ	40'-10" CONC	REMOVE	REMOVE PIPE
13+75/29'N	B-H/R-3067-R	28'-12" CONC CL IV @ 1.0%	NEW	CATCH BASIN
13+84/25'S	B-H/R-3067-R	28'-12" CONC CL IV @ 1.0%	REMOVE	REMOVE PIPE
13+84/25'S	B-H/R-3067-R	28'-12" CONC CL III @ 1.0%	NEW	CATCH BASIN
13+97/53'S	TYPE I R-2050-C	28'-12" CONC CL IV @ 1.0%	NEW	NEW TYPE I FIELD INLET - NO SUMP
14+55/33'S	IJ	60'-10" CONC	REMOVE	REMOVE PIPE
14+55/30'S	TYPE I R-1550-A	60'-12" CONC CL IV @ 1.0%	NEW	NEW TYPE I FIELD INLET - NO SUMP

ALL CATCH BASINS INCLUDE 10' SUMP BELOW INVERT ELEVATION

2023 STORM MANHOLE SCHEDULE

MANHOLE	LOCATION	TYPE	CASTING	CONST
LRB-11	14+06/11.5'N	1-1	R-1550-A	REMOVE
LRB-28	13+85/10'N	1-1	R-1550-A	NEW

CASTING: R-1550-A, TYPE B NON-ROCKING, 2 OPEN PICK HOLES

2023 SANITARY MANHOLE SCHEDULE

MANHOLE	LOCATION	TYPE	CASTING	CONST
17-39	14+15/28'N	1-1	R-1550-A	REMOVE
17-180	14+15/28'N	1-1	R-1550-A	NEW

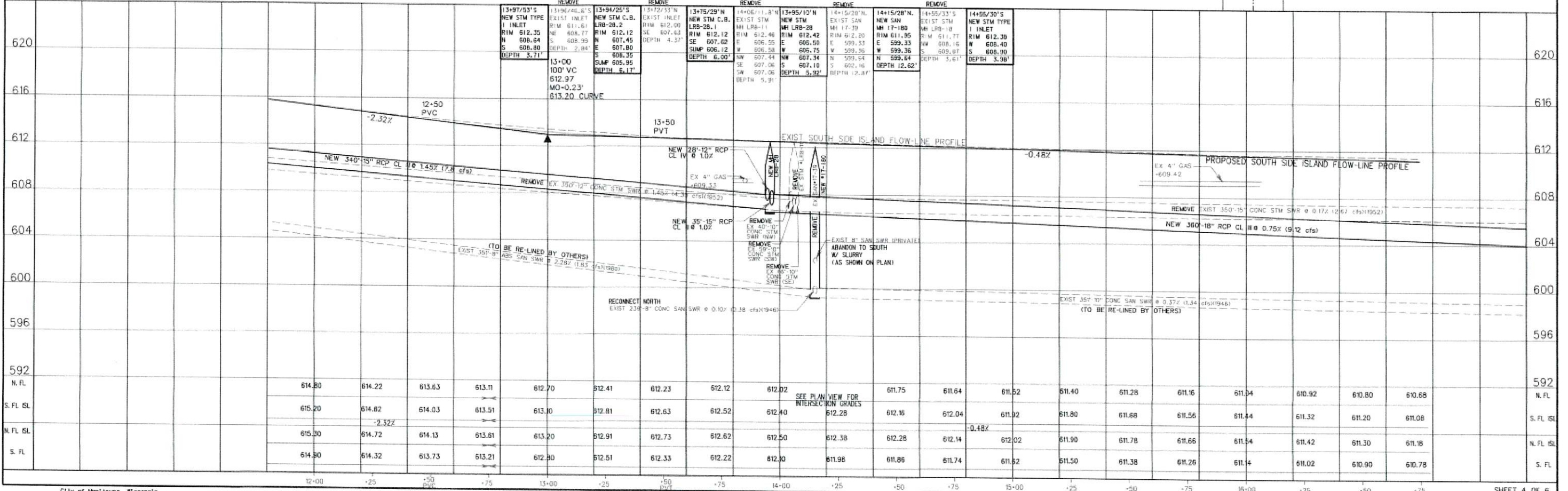
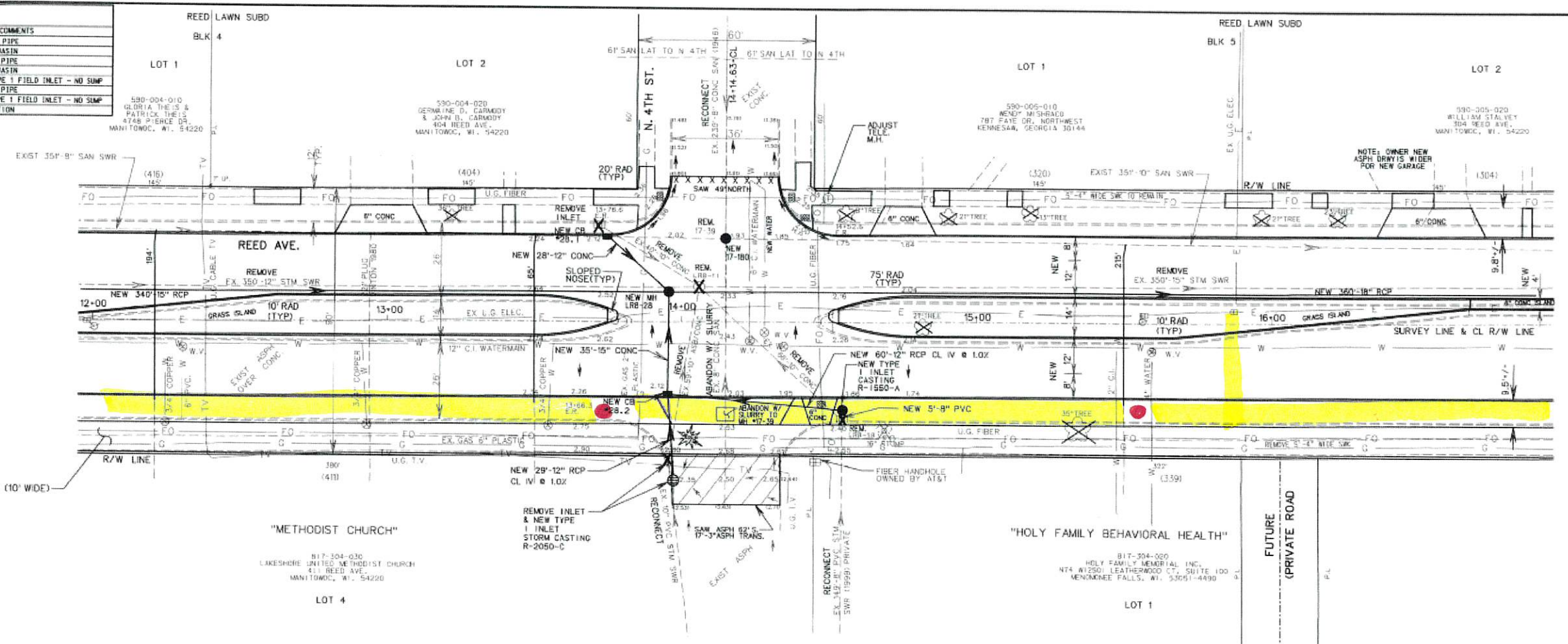
CASTING: R-1550-A, TYPE B MACHINED SURFACE, T-CASSET, 2 CORNERED PICK HOLES

2023 SANITARY LATERAL SCHEDULE

LOCATION	LENGTH/SIZE/TYPE	CONST	DIST TO LOW W. COMMENTS
12+21/S	57'-5" PVC	RELAY	15'
13+50/S	56'-8" PVC	RELAY	60'
15+11/S	55'-5" PVC	RELAY	215'

BENCH MARKS

N 5TH/RED - SE CORNER AT 80W CHISELED "X" POINT 65-617.81
N 4TH/RED - SE CORNER AT 80W CHISELED "X" POINT 63-612.72
N 3RD/RED - NE CORNER HYD. 652 "X" PLAMBE 611.065



DRAWN BY: J. R. J. / M. J.
 APPROVED BY: J. R. J. / M. J.
 REVISIONS: 1. 12/15/22, 2. 12/15/22, 3. 12/15/22, 4. 12/15/22, 5. 12/15/22, 6. 12/15/22, 7. 12/15/22, 8. 12/15/22, 9. 12/15/22, 10. 12/15/22, 11. 12/15/22, 12. 12/15/22, 13. 12/15/22, 14. 12/15/22, 15. 12/15/22, 16. 12/15/22, 17. 12/15/22, 18. 12/15/22, 19. 12/15/22, 20. 12/15/22, 21. 12/15/22, 22. 12/15/22, 23. 12/15/22, 24. 12/15/22, 25. 12/15/22, 26. 12/15/22, 27. 12/15/22, 28. 12/15/22, 29. 12/15/22, 30. 12/15/22, 31. 12/15/22, 32. 12/15/22, 33. 12/15/22, 34. 12/15/22, 35. 12/15/22, 36. 12/15/22, 37. 12/15/22, 38. 12/15/22, 39. 12/15/22, 40. 12/15/22, 41. 12/15/22, 42. 12/15/22, 43. 12/15/22, 44. 12/15/22, 45. 12/15/22, 46. 12/15/22, 47. 12/15/22, 48. 12/15/22, 49. 12/15/22, 50. 12/15/22, 51. 12/15/22, 52. 12/15/22, 53. 12/15/22, 54. 12/15/22, 55. 12/15/22, 56. 12/15/22, 57. 12/15/22, 58. 12/15/22, 59. 12/15/22, 60. 12/15/22

2023 STORM CATCH BASIN SCHEDULE									
LOCATION	TYPE/CASTING	LENGTH/SIZE/TYPE/GRADE	CONST.	REMARKS	COMMENTS				
17+25/33' N	LJ	37'-10" CONC	REMOVE	REMOVE PIPE					
17+24/29' N	3-H/R-3067-R	36'-12" CONC CL IV @ 1.0%	NEW	CATCH BASIN					
17+66/33' S	B-H	46'-10" CONC	REMOVE	REMOVE PIPE					
17+55/25' S	3-H/R-3067-R	42'-15" CONC CL III @ 1.0%	NEW	CATCH BASIN					
20+34/33' N	LJ	37'-10" CONC	REMOVE	REMOVE PIPE					
20+33/29' N	3-H/R-3067-R	34'-12" CONC CL IV @ 1.0%	NEW	CATCH BASIN					
20+55/32' S	LJ	44'-10" CONC	REMOVE	REMOVE PIPE					
20+56/25' S	3-H/R-3067-R	36'-15" CONC CL III @ 1.0%	NEW	CATCH BASIN					

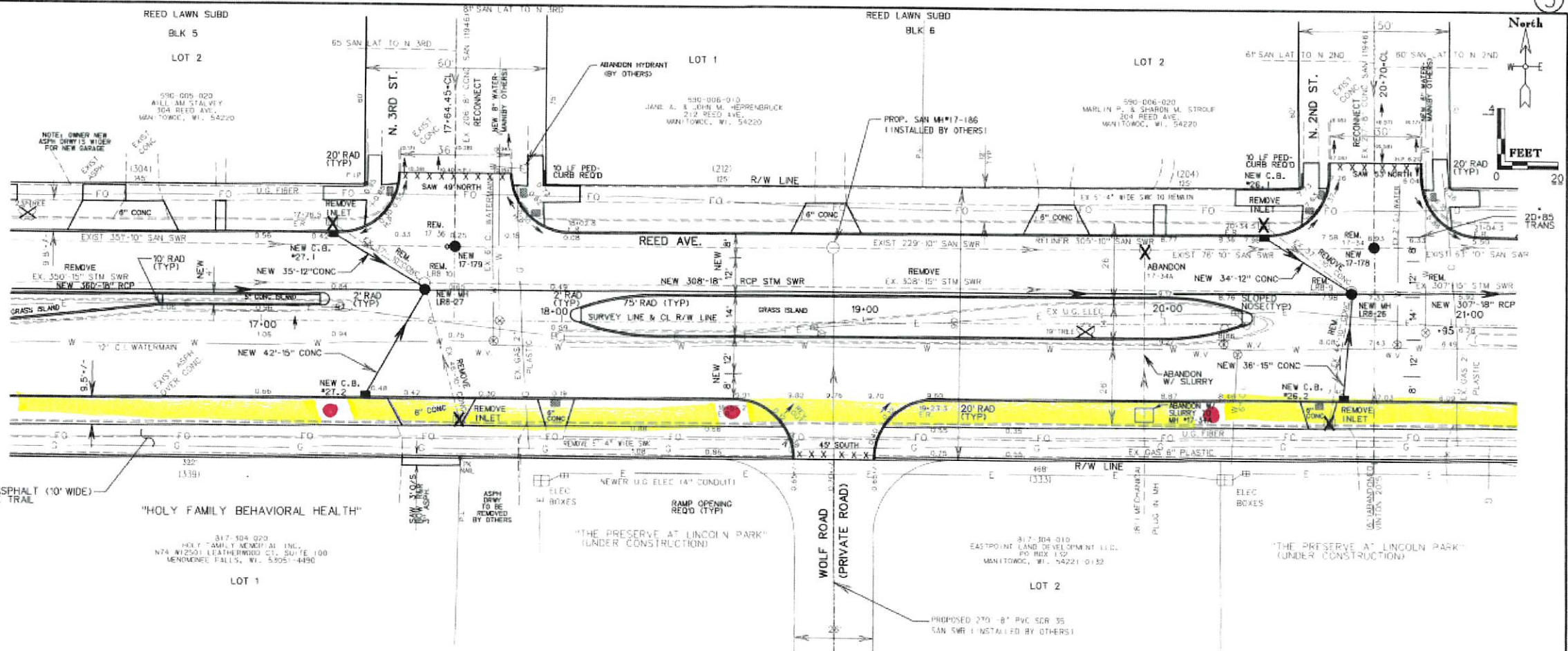
2023 STORM MANHOLE SCHEDULE				
MANHOLE	LOCATION	TYPE	CASTING	CONST.
LIR-10	17+55/32.5' N	1-J	R-1550-A	NEW
LIR-27	17+66/33' S	1-J	R-1550-A	NEW
LIR-9	20+62/10.8' N	1-J	R-1550-A	REMOVE
LIR-26	20+62/10' N	1-J	R-1550-A	NEW

CASTING: R-1550-A, TYPE B
NON-ROCKING, 2 OPEN PICK HOLES

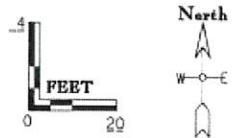
2023 SANITARY MANHOLE SCHEDULE				
MANHOLE	LOCATION	TYPE	CASTING	CONST.
L7-34	17+66/33.4' N	1-J	R-1550-A	NEW
L7-35	17+49/24.5' N	1-J	R-1550-A	REMOVE
L7-36	17+45/24.5' N	1-J	R-1550-A	NEW

CASTING: R-1550-A, TYPE B MACHINED SURFACE,
T-GASKET, 2 CONCEALED PICK HOLES

BENCH MARKS	
N 4TH/REED - SE CORNER AT BOW	CHISELED "X" POINT WS-612.72
N 5RD/REED - CL EXTENDED AT BOW	PK NAIL @ PROPERTY LINE WS-611.79
N 5RD/HOLE NE CORNER	HYD. 4922 "X" FLANGE WS-613.065
N 2ND/REED IN ISLAND (WEST SIDE)	HYD. 4955 "X" SPOUT WS-611.22



Station	Existing Inlet	Remove	Remove	Remove	Remove	Drop MH	Abandon MH	Remove	Remove	Remove	Remove	Remove	Remove	Remove	Remove
616		17+24/29' N NEW STM C.B. LIR-27.1 RIM 610.42 NE 606.42 SUMP 604.99 DEPTH 5.50'	17+25/33' N EXIST INLET RIM 610.49 NE 606.57 DEPTH 3.32'	17+25/25' S NEW STM C.B. LIR-27.2 RIM 610.44 NE 606.48 SUMP 604.99 DEPTH 5.50'	17+66/33' S EXIST INLET RIM 610.49 NE 606.57 DEPTH 3.32'	17+66/33' S EXIST INLET RIM 610.98 NE 606.30 W 595.96 N 406.15 SE 606.19 DEPTH 5.66'	17+66/33' S EXIST INLET RIM 610.98 NE 606.30 W 595.96 N 406.15 SE 606.19 DEPTH 5.66'	17+66/33' S EXIST INLET RIM 610.98 NE 606.30 W 595.96 N 406.15 SE 606.19 DEPTH 5.66'	17+66/33' S EXIST INLET RIM 610.98 NE 606.30 W 595.96 N 406.15 SE 606.19 DEPTH 5.66'	17+66/33' S EXIST INLET RIM 610.98 NE 606.30 W 595.96 N 406.15 SE 606.19 DEPTH 5.66'	17+66/33' S EXIST INLET RIM 610.98 NE 606.30 W 595.96 N 406.15 SE 606.19 DEPTH 5.66'	17+66/33' S EXIST INLET RIM 610.98 NE 606.30 W 595.96 N 406.15 SE 606.19 DEPTH 5.66'	17+66/33' S EXIST INLET RIM 610.98 NE 606.30 W 595.96 N 406.15 SE 606.19 DEPTH 5.66'	17+66/33' S EXIST INLET RIM 610.98 NE 606.30 W 595.96 N 406.15 SE 606.19 DEPTH 5.66'	17+66/33' S EXIST INLET RIM 610.98 NE 606.30 W 595.96 N 406.15 SE 606.19 DEPTH 5.66'
612															
608															
604															
600															
596															
592															
588															
N.FL															
S.FL ISL															
N.FL ISL															
S.FL															
<p>City of Manitowish Wisconsin Engineering Department 300-686-6946</p>															



INLETS TO REMAIN
NEW CASTINGS REQ'D

LOCATION	TYPE/CASTING	LENGTH/SIZE/TYP/GRADE	CONST	COMMENTS
20+34/23.5' N	I-I	37'-10" CONC	REMOVE	REMOVE PIPE
20+33/23' N	3-H/R-3067-R	34'-12" CONC CL IV @ 1.0%	NEW	CATCH BASIN
20+55/23.9' S	I-I	44'-10" CONC	REMOVE	REMOVE PIPE
20+58/25.5' S	3-H/R-3067-R	36'-15" CONC CL III @ 1.0%	NEW	CATCH BASIN
23+43/26.8' S	3-H/R-3067-R	46'-15" CONC/PVC @ 3.3%	EXIST	REMOVE PIPE (MH & INLET TO REMAIN)
23+43/26.8' S	3-H/R-3067-R	46'-15" CONC CL III @ 3.91%	EXIST	NEW PIPE & CASTING-INLET TO REMAIN

ALL CATCH BASINS INCLUDE 18" SUMP BELOW INLET ELEVATION

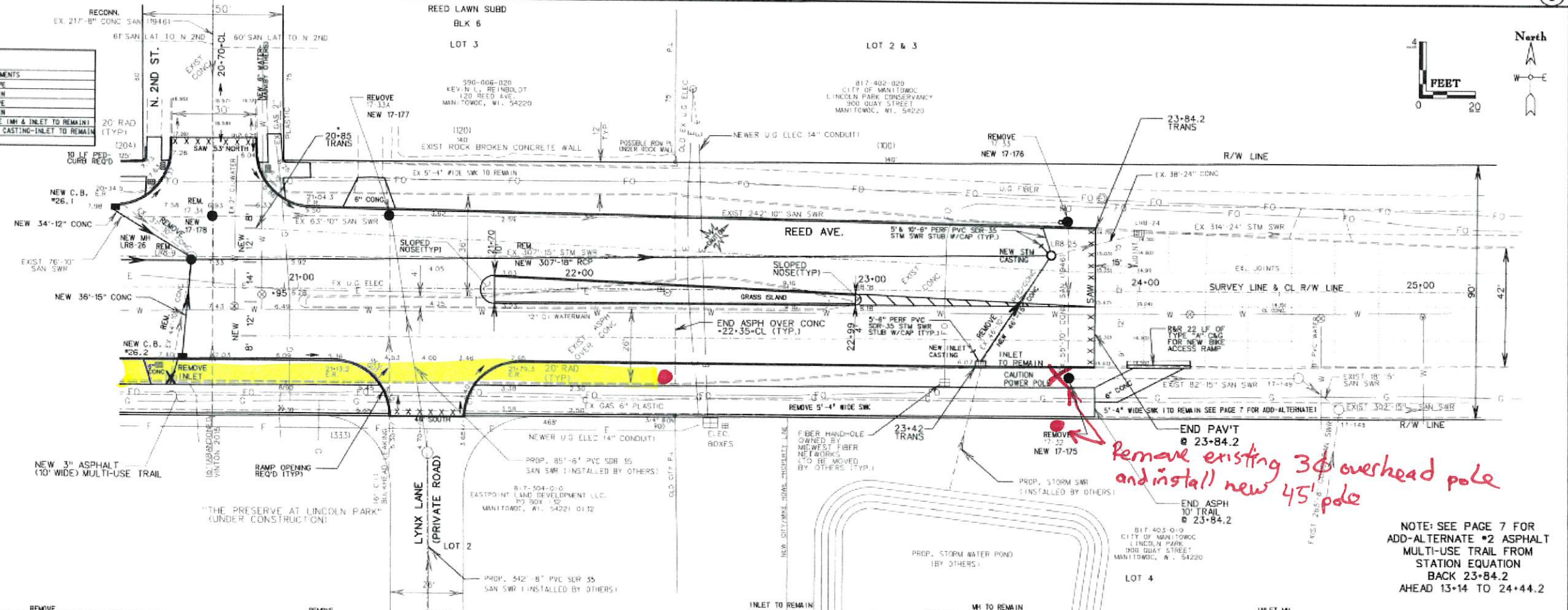
MANHOLE	LOCATION	TYPE	CASTING	CONST
LRB-9	20+62/10.8' N	1-1	R-1550-A	REMOVE
LRB-26	20+62/10' N	1-1	R-1550-A	NEW
LRB-25	23+88/2.7' N	1-1	R-1550-A	TO REMAIN NEW CASTING

CATCHER: R-1550-A, TYPE 3
NON-ROCKING, 2 OPEN PICK HOLES

MANHOLE	LOCATION	TYPE	CASTING	CONST
17-32	23+75/30.8' N	1-1	R-1550-A	REMOVE
17-35	23+75/30.8' N	1-1	R-1550-A	NEW
17-33	23+74/24.4' N	1-1	R-1550-A	REMOVE
17-176	23+74/24.4' N	1-1	R-1550-A	NEW
17-33A	21+33/25.7' N	1-1	R-1550-A	REMOVE
17-177	21+33/25.7' N	1-1	R-1550-A	NEW
17-34	20+70/25.4' N	1-1	R-1550-A	REMOVE
17-178	20+70/25.4' N	1-1	R-1550-A	NEW

CASTING: R-1550-A, TYPE B MACHINED SURFACE,
T-GASKET, 2 CONCEALED PICK HOLES

BENCH MARK	DESCRIPTION	ELEVATION
N 3RD/REED NE CORNER	HYD. #522 "X" FLANGE-613.065	
N 2ND/REED (N ISLAND WEST SIDE)	HYD. #85 "X" SPOUT-611.29	
N 2ND/REED SE CORNER AT BOW	CHISELED "X" #1 = 607.23	
REED SOUTH SIDE 228 WEST OF THE	200 ENTRANCE POWER POLE #7E 501A	LAG-598.683
	NAIL 598.928	



*Remove existing 30' overhead pole
and install new 45' pole*

NOTE: SEE PAGE 7 FOR
ADD-ALTERNATE #2 ASPHALT
MULTI-USE TRAIL FROM
STATION EQUATION
BACK 23+84.2
AHEAD 13+14 TO 24+44.2

STATION	TYPE	DESCRIPTION	ELEVATION	STATION	TYPE	DESCRIPTION	ELEVATION	STATION	TYPE	DESCRIPTION	ELEVATION	STATION	TYPE	DESCRIPTION	ELEVATION
608	EXIST	20+34/23.5' N INLET	608.16	608	EXIST	20+33/23' N INLET	608.16	608	EXIST	20+33/23' N INLET	608.16	608	EXIST	20+33/23' N INLET	608.16
604	NEW	20+62/10.8' N RCP CL III @ 1.0%	604.15	604	NEW	20+62/10.8' N RCP CL III @ 1.0%	604.15	604	NEW	20+62/10.8' N RCP CL III @ 1.0%	604.15	604	NEW	20+62/10.8' N RCP CL III @ 1.0%	604.15
600	NEW	20+62/10.8' N RCP CL III @ 1.0%	600.15	600	NEW	20+62/10.8' N RCP CL III @ 1.0%	600.15	600	NEW	20+62/10.8' N RCP CL III @ 1.0%	600.15	600	NEW	20+62/10.8' N RCP CL III @ 1.0%	600.15
596	NEW	20+62/10.8' N RCP CL III @ 1.0%	596.15	596	NEW	20+62/10.8' N RCP CL III @ 1.0%	596.15	596	NEW	20+62/10.8' N RCP CL III @ 1.0%	596.15	596	NEW	20+62/10.8' N RCP CL III @ 1.0%	596.15
592	NEW	20+62/10.8' N RCP CL III @ 1.0%	592.15	592	NEW	20+62/10.8' N RCP CL III @ 1.0%	592.15	592	NEW	20+62/10.8' N RCP CL III @ 1.0%	592.15	592	NEW	20+62/10.8' N RCP CL III @ 1.0%	592.15
588	NEW	20+62/10.8' N RCP CL III @ 1.0%	588.15	588	NEW	20+62/10.8' N RCP CL III @ 1.0%	588.15	588	NEW	20+62/10.8' N RCP CL III @ 1.0%	588.15	588	NEW	20+62/10.8' N RCP CL III @ 1.0%	588.15
584	NEW	20+62/10.8' N RCP CL III @ 1.0%	584.15	584	NEW	20+62/10.8' N RCP CL III @ 1.0%	584.15	584	NEW	20+62/10.8' N RCP CL III @ 1.0%	584.15	584	NEW	20+62/10.8' N RCP CL III @ 1.0%	584.15
580	NEW	20+62/10.8' N RCP CL III @ 1.0%	580.15	580	NEW	20+62/10.8' N RCP CL III @ 1.0%	580.15	580	NEW	20+62/10.8' N RCP CL III @ 1.0%	580.15	580	NEW	20+62/10.8' N RCP CL III @ 1.0%	580.15
N.F.L.				N.F.L.				N.F.L.				N.F.L.			
S.F.L.				S.F.L.				S.F.L.				S.F.L.			
N.F.L.				N.F.L.				N.F.L.				N.F.L.			
S.F.L.				S.F.L.				S.F.L.				S.F.L.			

City of Manitowoc, Wisconsin
Engineering Department
300-586-0310