

16-0948



A
Proud
Program
of
the:



Parkland Dedication Fund

September 15, 2016

RE: Kayak launch at Lower Schuette Park

Dear Manitowoc Public Infrastructure Committee:

The Friends of the Manitowoc River Watershed (FMRW) formally adopted Lower Schuette Park in 2014 and installed an ADA compliance kayak launch in 2016. A formal dedication with a ribbon cutting occurred on June 22, 2016. The community-based group has also constructed "Leopold" style benches and a kayak rack for the park.

The Friends of the Manitowoc River Watershed (FMRW) and Lakeshore Natural Resource Partnership (LNRP) have been key partners involved in developing this kayak launch project. As part of adopting the park, FMRW performs monthly walkthroughs of the park, including the launch area, and notifies the City of any maintenance needed on the launch or other park amenities.

We are proposing to add an easily accessible approach to the kayak launch that would allow all users easy access from the parking lot over what is now a grassy area with a small depression. We have received an engineering design and a material list from Braun Building Center.

Total cost of the project is approximately \$17,500 that includes the designs, material list, labor, kayak rack, and benches. We are requesting \$8,271.86 from the City of Manitowoc's Parkland Dedication Fund for materials. LNRP has committed a 50% match to the project.

The mission of FMRW is to connect people to the Manitowoc River in order to increase awareness, appreciation and use of the river. The group developed the plan to increase river access through the creation of a Kayak/Canoe launch at Lower Schuette Park. We hope you will consider our proposal worthy of funding. We are ready to begin construction of the approach as soon as funding is secured.

Sincerely,

James Kettler, Executive Director

Lakeshore Natural Resource Partnership

LOWER SCHUETTE PARK

State of the Park - Present and Future

January 2016



REPORT SUMMARY

The purpose of this report is to:

- Present current state of Lower Schuette Park
- Present “wish list” for future projects
- Start dialog on funding and accomplishing some of the projects

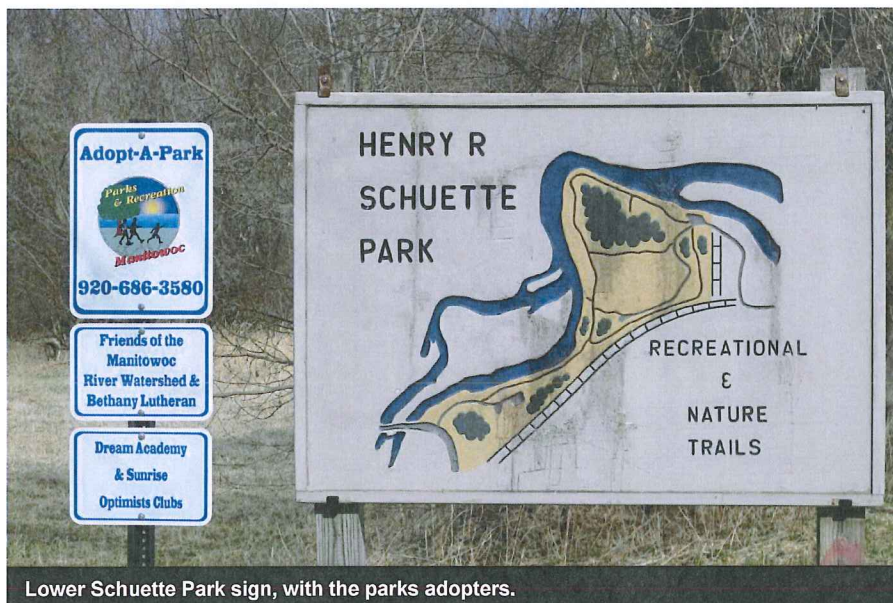
FMRW adopts Lower Schuette Park

In the winter of 2013, the Friends of the Manitowoc River Watershed (FMRW), along with Bethany Lutheran, Dream Academy, and the Sunrise Optimists Clubs, adopted Lower Schuette Park in the City of Manitowoc on the Manitowoc River.

Opportunities - With over 65.17 acres (combined Upper and Lower Schuette Park),

this park has a lot of potential. The Ice Age Trail runs through the park, a new kayak launch has been installed, and there is abundant access to the Manitowoc River. A goal would be to draw more people to the park.

Concerns - Graffiti and vandalism are prevalent in the park and there are no rest room facilities in the lower portion of the park.



Lower Schuette Park sign, with the parks adopters.

Highlights of Park

- ADA Kayak Launch (More info on page 2)
- Ice Age Trail
- Excellent Access to the River for Fishing
- 6 miles of Hiking/ Biking Trails
- Scenic views of the Manitowoc River



Map of Henry Schuetz Park. (source: City of Manitowoc Webpage).

KAYAK LAUNCH INSTALLED

An American with Disabilities Act (ADA) compliant kayak/canoe launch was installed on the Manitowoc River in Lower Schuetz Park for a trial run in the Fall 2015. It will be installed in the Spring of 2016 for the paddling season.

The launch will make it easier to get in and launch their vessels, especially for those with disabilities and children.

The launch was funded through the Knowles-Nelson Stewardship Program, the Wisconsin DNR, FMRW, and LNRP. It was installed by and will be maintained by the City of Manitowoc.



Areas of Concern

Stair Cases Need Repair



The set of stairs leading from Lower to Upper Schuette Park are in need of repair and are currently closed. A railing would be a bonus! Other than car, there is no safe way to get between the 2 parks.

The stairs pictured are located at the star on the map on page 2. They are very difficult to use. Some of the logs have turned forward, causing a tripping hazard, especially when they are wet. The height between the steps is very inconsistent, making it hard to get down and harder to pull yourself up.



Additional Projects

- Graffiti - Needs to be cleaned off benches, signs, and pavement (Pictures 1 and 2)
- Exercise Course - Is falling apart and unusable. Probably should be removed for safety reasons. The sign in Picture 2 is an example of the condition of the entire course.
- Ruts in Trails - There are deep ruts in many of the trails (in these pictures they may be filled with leaves). (Pictures 3, 4, 5, and 6).
- Benches are in need of repair and painting. (Pictures 4 and 7).
- Not utilized by the public to its full potential. What sorts of activities appeal to the public and keep the park's natural landscape?



Wish List

- Improved garbage and recycling bins
- Restroom facilities, permanent or Port-a-Potty
- Gravel Approach - Install a direct gravel approach (maybe even car accessible to drop off kayaks and kayakers). A straight approach located at the photo at right would be ideal. This project would require an expensive wetland delineation and require raising funds.
- Kayak Rack - Install a kayak rack for temporary storage of vessels while enjoying the park.



Ice Age Trail

The Ice Age Trail is a 1,200 mile trail system across the state of Wisconsin. There is a section of the trail running through Schuette Park. There is potential to team up with the Ice Age Trail Alliance to maintain this section of trail and bring in more hikers walking the trail.

Volunteer Opportunities

- Trail maintenance, improvements, and brush trimming
- Invasive species mapping and removal
- Native plantings
- Moving gravel to fill trail ruts

The boardwalk is an area that is very overgrown in the summer months. Many of the trails become extremely overgrown as well. Both need to be better maintained during the summer months.



Contact FMRW

Contact us today to get involved with the Friends of the Manitowoc River Watershed or to help us improve Lower Schuette Park.

We always love volunteers, whether for one project for an hour or two or a larger commitment.

Email Us : fmrwinfo@gmail.com

Visit us on the web at www.inrp.org/friends-of-the-manitowoc-river-watershed

BRAUN

BUILDING CENTER

3303 Menasha Avenue - Manitowoc, WI 54220-1699
Phone - 920-682-0143

SOLD TO

SPECIAL ORDER MATERIAL CANNOT BE RETURNED.

JT
SV2B

DUE BY 12/12/16
7/14/16 15:42

C
PAGE 1

PHONE:

REPRINT SAVED QUOTE

SHIP TO

LOWER SCHUETTE PARK

**** CASH CUSTOMER ****

JOB NAME ACCOUNT

JOB NO.

CUST. NO	ORDER/INV. #	INV. DATE	TERMS	ORDER DATE	CUST. P.O.	SALESMAN		
CASH	BB0622937			7/14/16		JT	X	
QTY. ORD.	SHIPPED	B/O	U.O.M.	ITEM CODE	DESCRIPTION	UNIT PRICE	AMOUNT	
20			EA	DP50	DP50 DIAMOND PIER CONCRETE PIER KIT	144.00	2,880.00	
16			EA	ABA66Z	6 X 6 POST BASE ZINC COATED	24.99	399.84	
4			EA	T668	6 X 6 - 8' TREATED WOOD SYP	19.81	79.24	
4			EA	BCS224Z	DOUBLE 2X TO 4X4 POST CONNECTOR	5.99	23.96	
16			EA	BCS236Z	6 X 6 POST CAP TO BEAM CONNECTOR	7.99	127.84	
14			EA	T2812	2 X 8 - 12' SELECT TREATED WOOD HEADERS	13.31	186.34	
54			EA	T2812	2 X 8 - 12' SELECT TREATED WOOD JOISTS	13.31	718.74	
36			EA	LUC26Z	CONCEALED 2X6-8 JOIST HANGER	1.69	60.84	
72			EA	LUS28Z	2 X 8-10 SGL JOIST HANGER ZINC COATED	2.29	164.08	
4			EA	T668	6 X 6 - 8' TREATED WOOD SYP KNEE BRACING	19.81	79.24	
32			EA	KBS1Z	KNEE BRACE STABILIZER ZINC	2.29	73.28	
5			EA	SCS150	#9 X 1-1/2" STRUCT CONNECTOR SCREW 100	11.99	59.95	
110			EA	TD54612	5/4 X 6 - 12' SELECT TREATED DECKING	7.86	864.60	
2			CS	FM158	1-5/8" GUARD DOG DECK SCREW EXT	83.00	166.00	
15			EA	07331	2 X 4 - 144" TREATED COMBO RAIL	25.99	389.85	
480			EA	07321	2 X 2 - 42" SGL TREATED BEVEL SPINDLE	1.30	624.00	
16			EA	T448	4 X 4 - 8' SELECT TREATED WOOD	10.50	168.00	
64			EA	DTT2Z	LATERAL DECK TENSION TIE ZINC	7.99	511.36	
1			EA	MISC	MISC FASTENER ALLOWANCE BOLTS/WASHERS	300.00	300.00	

THIS IS AN ESTIMATE
PLEASE EXAMINE CAREFULLY INSTRUCTIONS:
Not responsible for clerical errors.
Price subject to market fluctuations,
availability of materials subject
to inventory conditions.
This estimate is valid 30 DAYS FROM DATE OF QUOTE.

CSH/PRU

TOTALS

SUBTOTAL	7,877.96
TAX	393.90
TOTAL	8,271.86
PAID PREV.	.00
PAID NOW	.00
TOTAL PAID	.00
NET DUE	8,271.86

DRIVER _____ DATE _____

Thank You
For Your Purchase

DRAWN BY: J.A.
 DATE: 10-2014
 SHEET: 10-001-4
 REVISIONS: 10-15-10-06
 PROJECT: 10-15-10-06
 CONTRACTOR: 10-15-10-06
 PROJECT: 10-15-10-06
 CONTRACTOR: 10-15-10-06

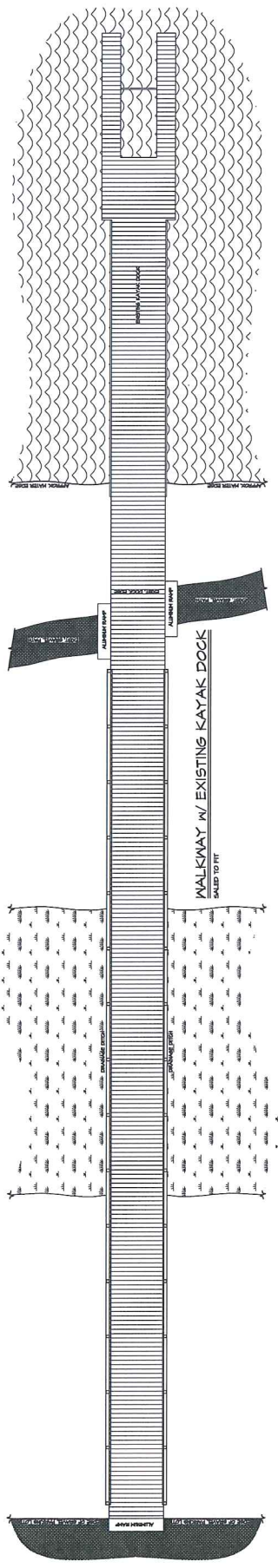
3333 KAYAK LAUNCH CENTER
 MANTOWOC, WI 53220
 920-882-0188
 920-882-0289



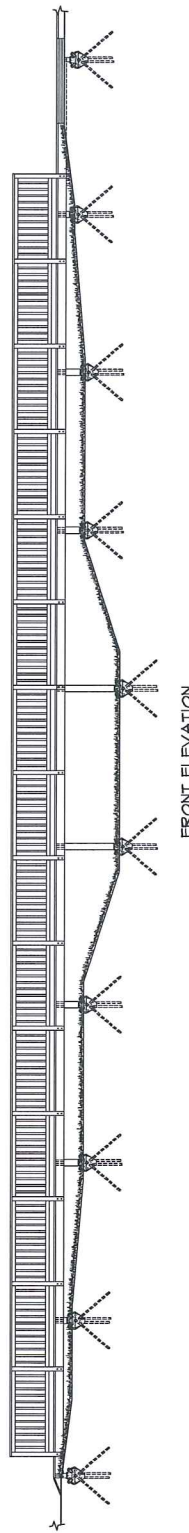
LOWER SCHUETTE PARK,
 KAYAK LAUNCH
 MANTOWOC, WI

-NOTES-
 1. ALL DIMENSIONS UNLESS OTHERWISE SPECIFIED ARE IN FEET AND INCHES.
 2. ALL DIMENSIONS TO FACE UNLESS NOTED OTHERWISE.
 3. ALL DIMENSIONS TO FACE UNLESS NOTED OTHERWISE.
 4. ALL DIMENSIONS TO FACE UNLESS NOTED OTHERWISE.
 5. ALL DIMENSIONS TO FACE UNLESS NOTED OTHERWISE.

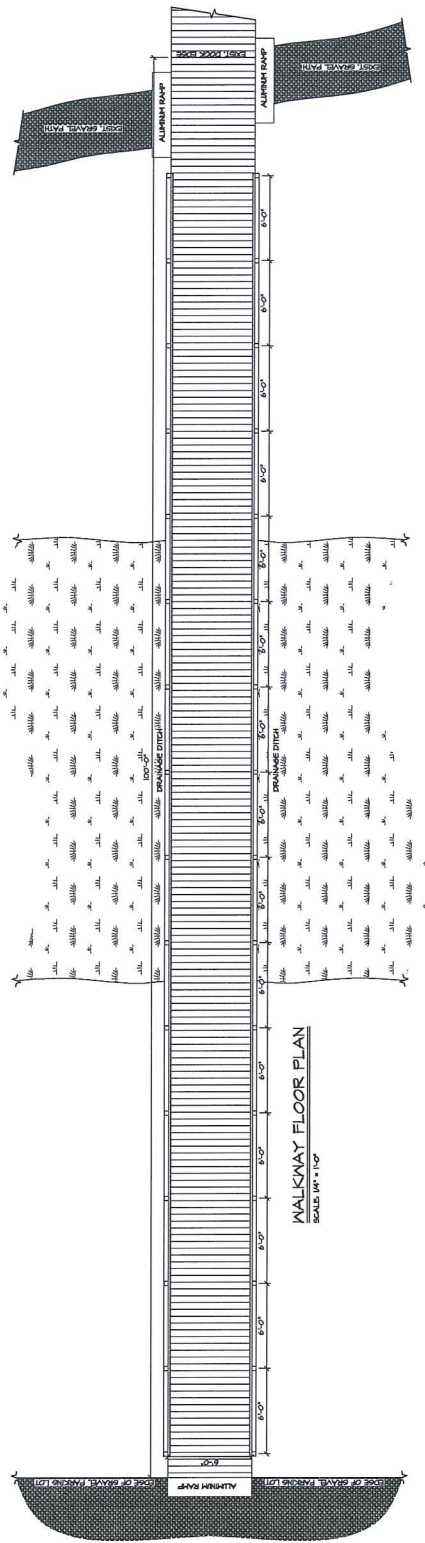
1
 PRELIMINARY PLAN
 NOT FOR CONSTRUCTION



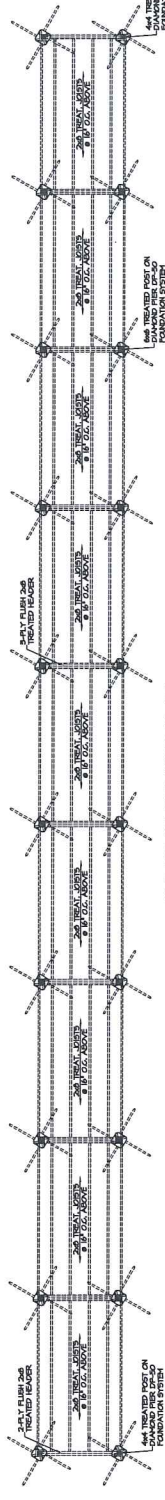
SIDE ELEVATION
 SCALE: 1/4" = 1'-0"



FRONT ELEVATION
 SCALE: 1/4" = 1'-0"



WALKWAY FLOOR PLAN
 SCALE: 1/4" = 1'-0"



WALKWAY FRAMING PLAN
 SCALE: 1/4" = 1'-0"

ALL TREATED WOOD ON
 CONTACT WITH GROUND
 TO BE PROTECTED BY AN
 ADVANCED WOOD PRESERVATION SYSTEM

ALL TREATED WOOD ON
 CONTACT WITH GROUND
 TO BE PROTECTED BY AN
 ADVANCED WOOD PRESERVATION SYSTEM