

2024 Private Lead Service Line Replacement Program



2024:
\$8,286,000
for Private LSL
Replacements

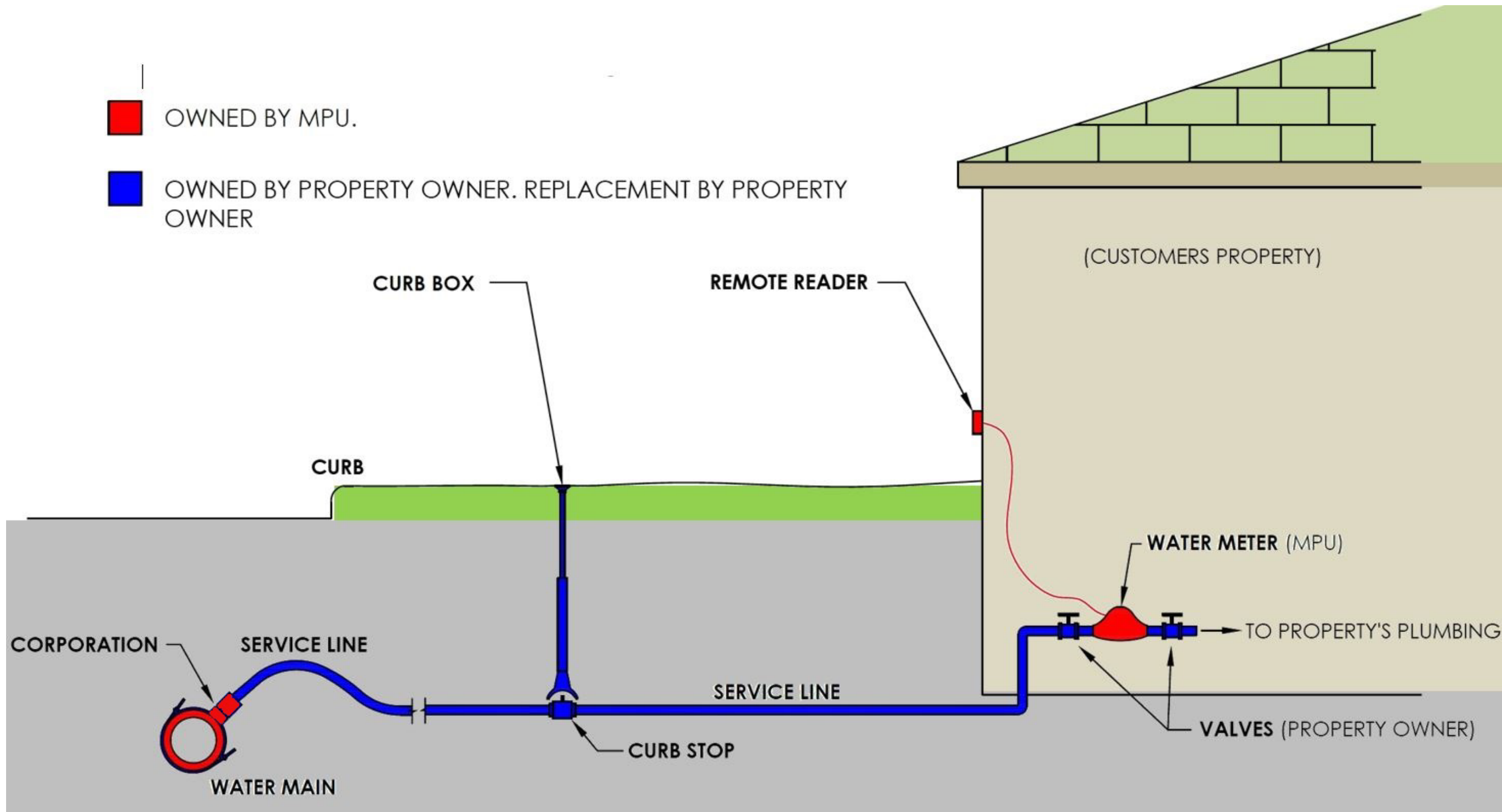
MPU has qualified for unprecedented funding from the WDNR to replace private lead service lines

2024 LSL Program

Locations and Timeline

Keys to Success

Water Service Diagram

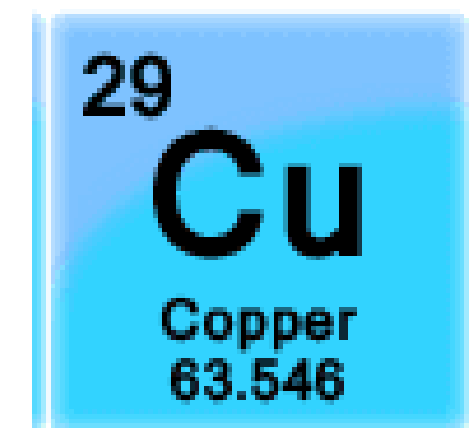
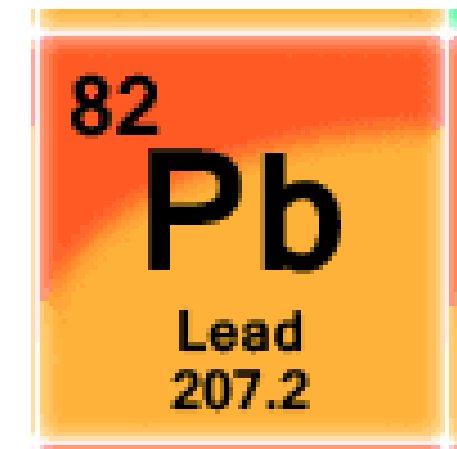


Lead in Drinking Water

Lead or copper are not found in the water supply

Common water service materials include lead, copper, and plastic

Metals can be absorbed into water that is in contact with the commonly used plumbing materials



Health Effects of Lead

Lead is a toxic metal that can be harmful to human health even at low exposure levels

- EPA: Lead and Copper Rule, 1992
- MPU adds a corrosion inhibitor to reduce leaching
- 2015: Flint, MI
- **Get the Lead Out**

Municipal Ordinances

12.110, Water Laterals

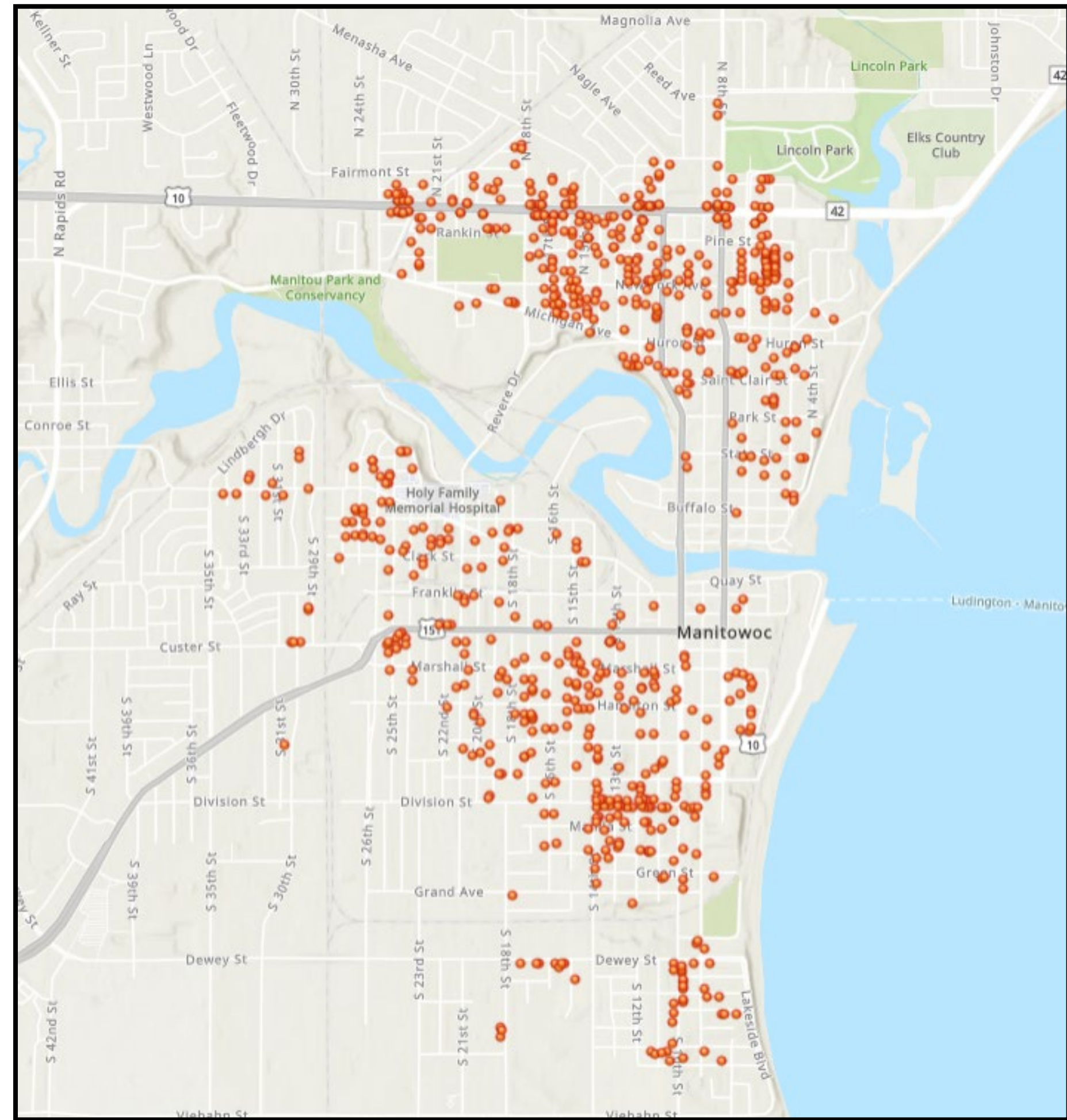
The owner of any property to which a water lateral is connected shall make all required repairs or replacements to the water lateral.

17.090, Water Service Line Replacement

Lead or G.I. water service lines shall be replaced in their entirety, when it appears that any portion of a lead or G.I. water service has failed or whenever a public works project may impact the water lines.

2017-2023, MPU has assisted ~750 properties with LSL replacements

Over \$2,000,000 WDNR funds
distributed to property
owners

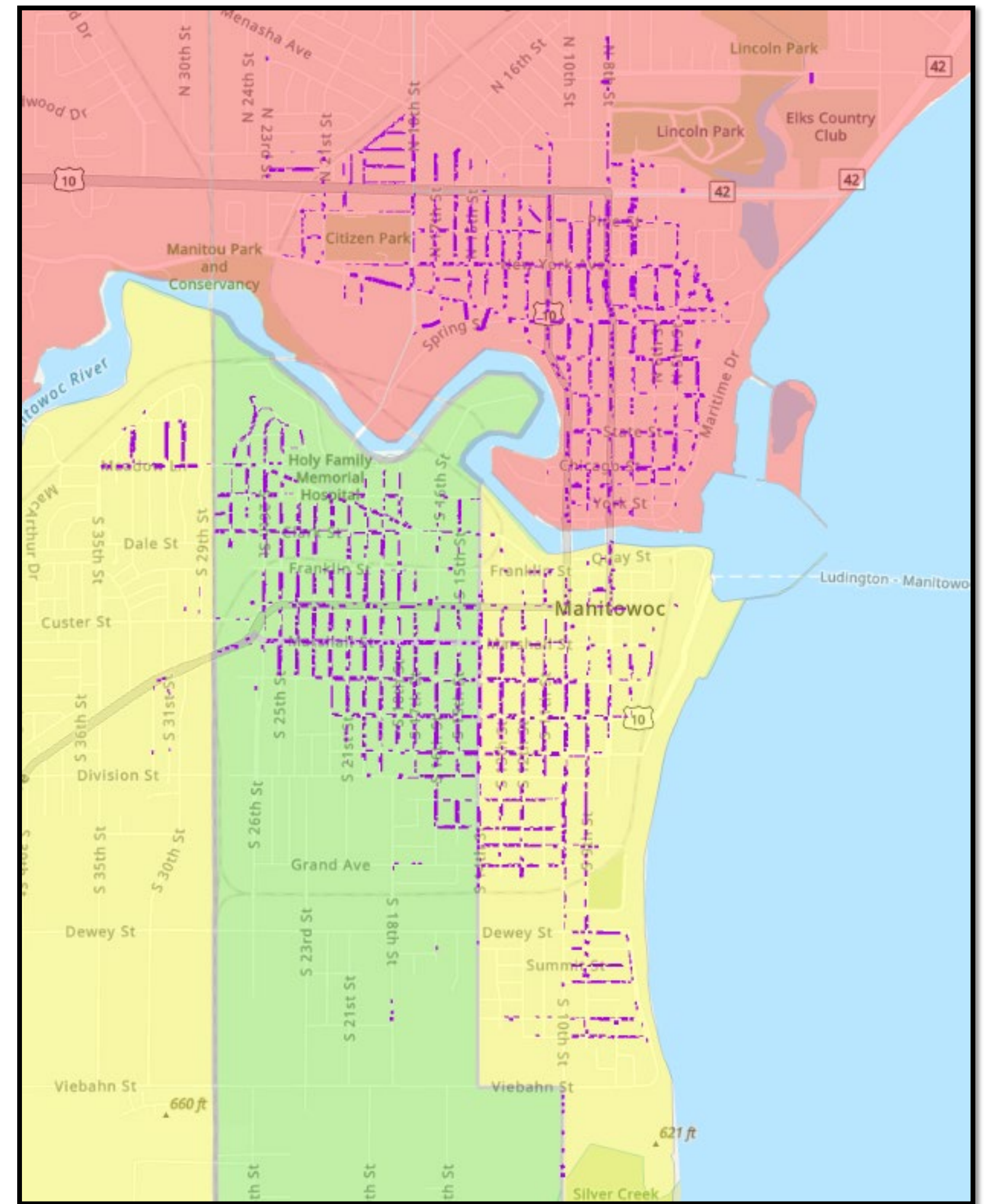


2024 - BIL Funding for Lead

Bipartisan Infrastructure Law (BIL) will provide over \$900 million in 2022-2026

- Managed through the WDNR Safe Drinking Water Loan Program
- BIL requires the LSL Principal Forgiveness to be awarded to **disadvantaged communities and census tracts**

Census Tracts 2024 LSL Funding



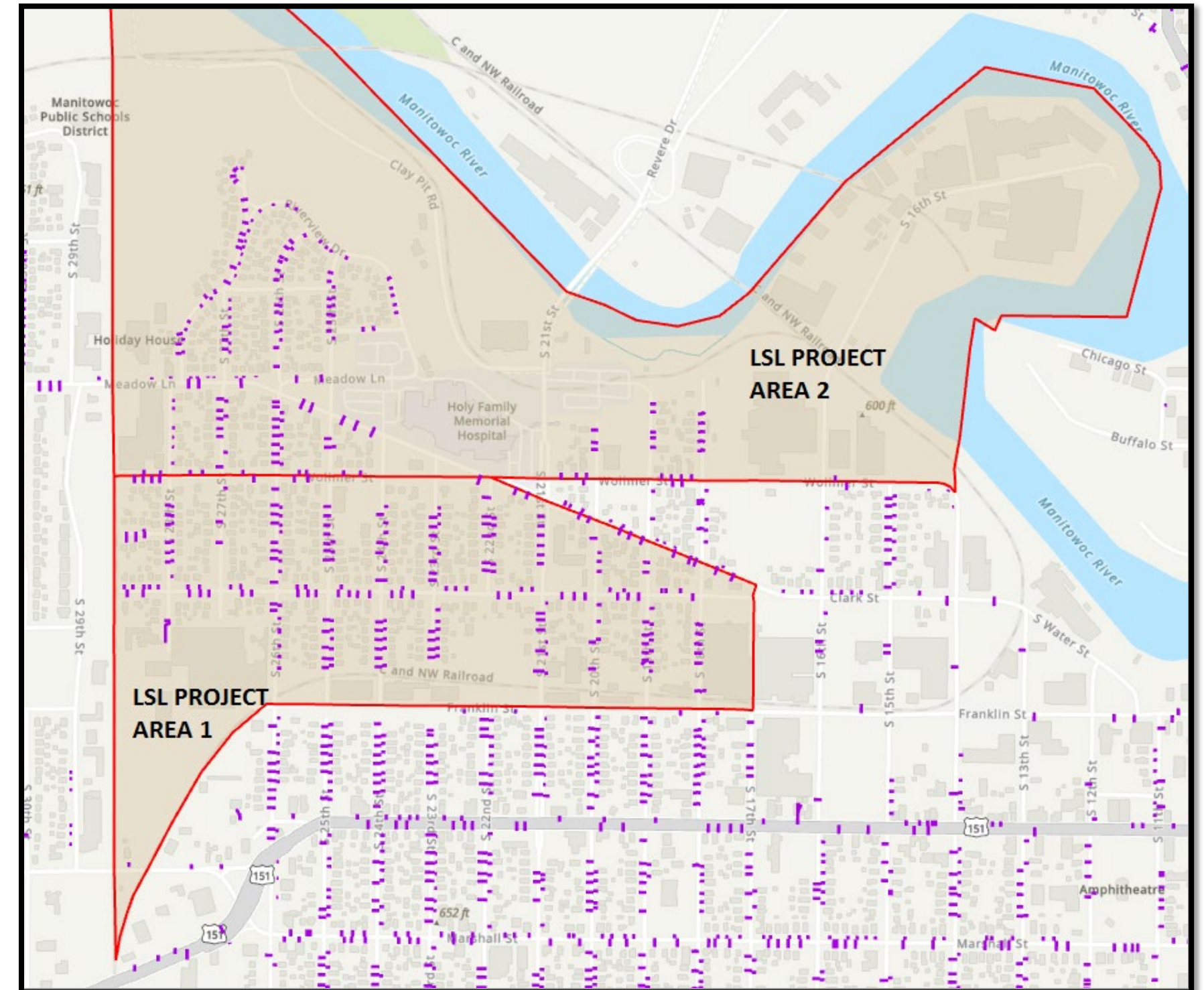
MANITOWOC
PUBLIC UTILITIES

Priority - Disadvantaged Census Tracts

Limited LSL Funding 100% PF

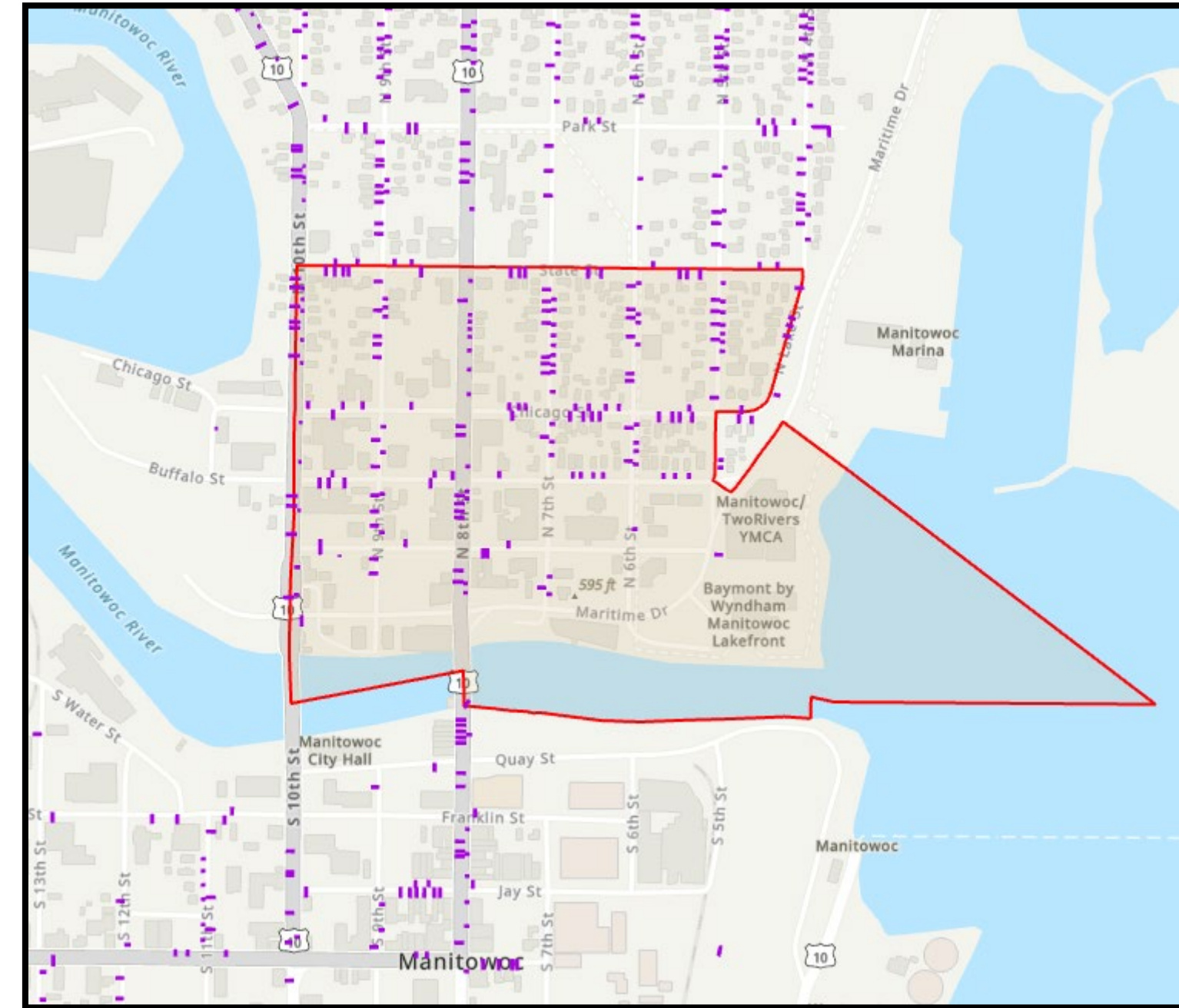
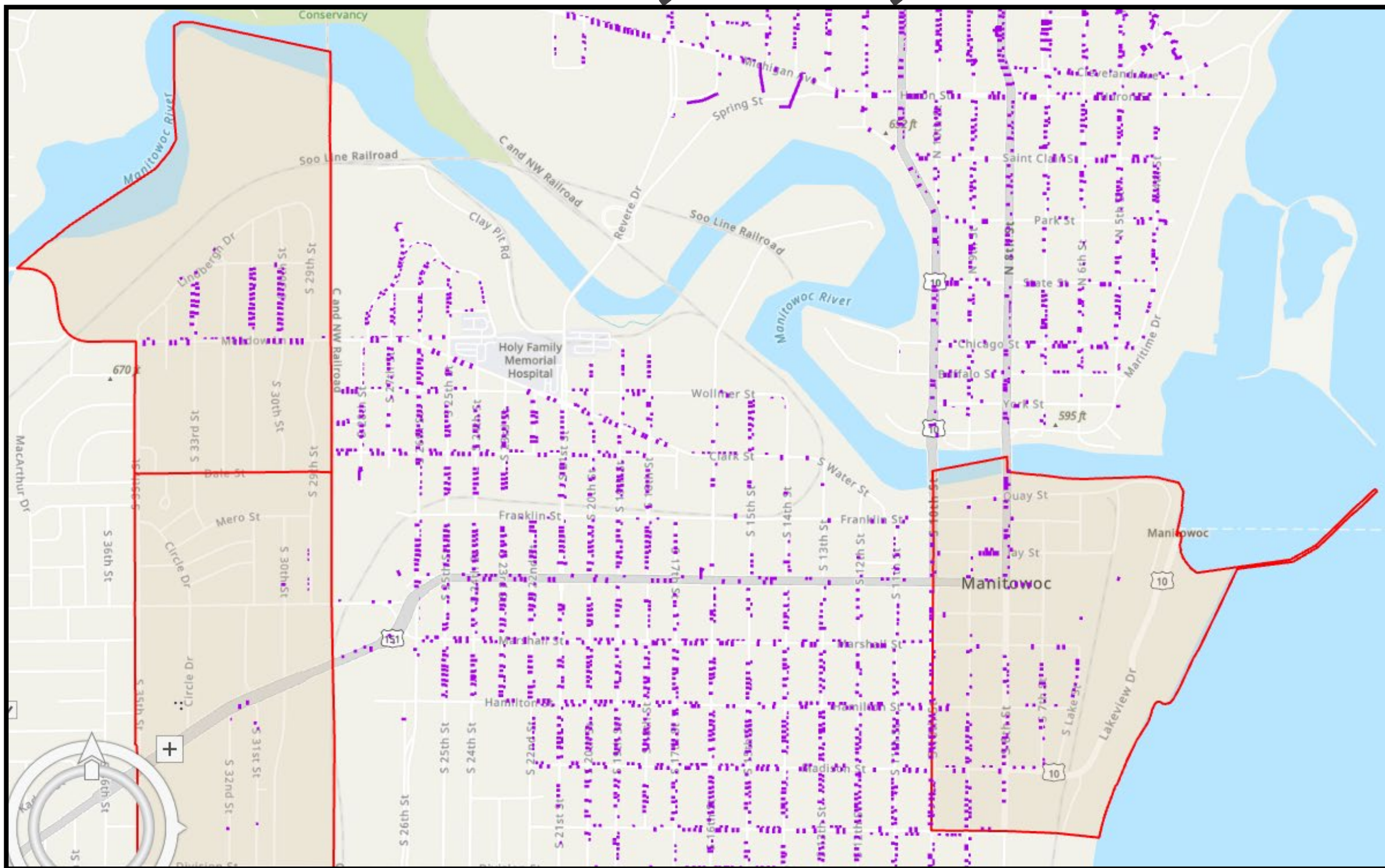
MPU will prioritize the \$4.45M to
Census Block Groups with the
Lowest Median Household Income
(MHI)

**Using best available US Census data*



Priority – Census Tracts w Cost Share

75% PF - \$3,156,000



50% PF - \$680,000

MANITOWOC
PUBLIC UTILITIES

Property Owner Cost Share Options

Pay the difference directly to MPU

Apply for the MPU LSL Loan Program *(Limited)*

- Approved by the PSC-W
- Up to \$6000 for 10 years at 2.5% interest
- Payment is on the water bill

Alternative Pledge *(New)*

- SDWLP Loan from the WDNR
- LSL Loan administered by the City
- Details TBD

Why replace your LSL?

- Fully/highly funded
- Improve water quality
- Improve pressure/flow
- Improve property value

- Future funding ??
- Future requirement ??

Keys to Success

MPU has qualified for \$8,286,000 for private LSL replacements

- WDNR: funding is intended for disadvantaged Census Tracts
- MPU will prioritize the funding to certain disadvantaged neighborhoods; we cannot fund them all
- Communication is key - support and advocate for LSL replacements, direct citizens to MPU
- MPU continues to seek additional LSL funding for future years



1303 South 8th Street, Manitowoc, WI 54220

MPU.ORG

Community Owned... Customer Focused