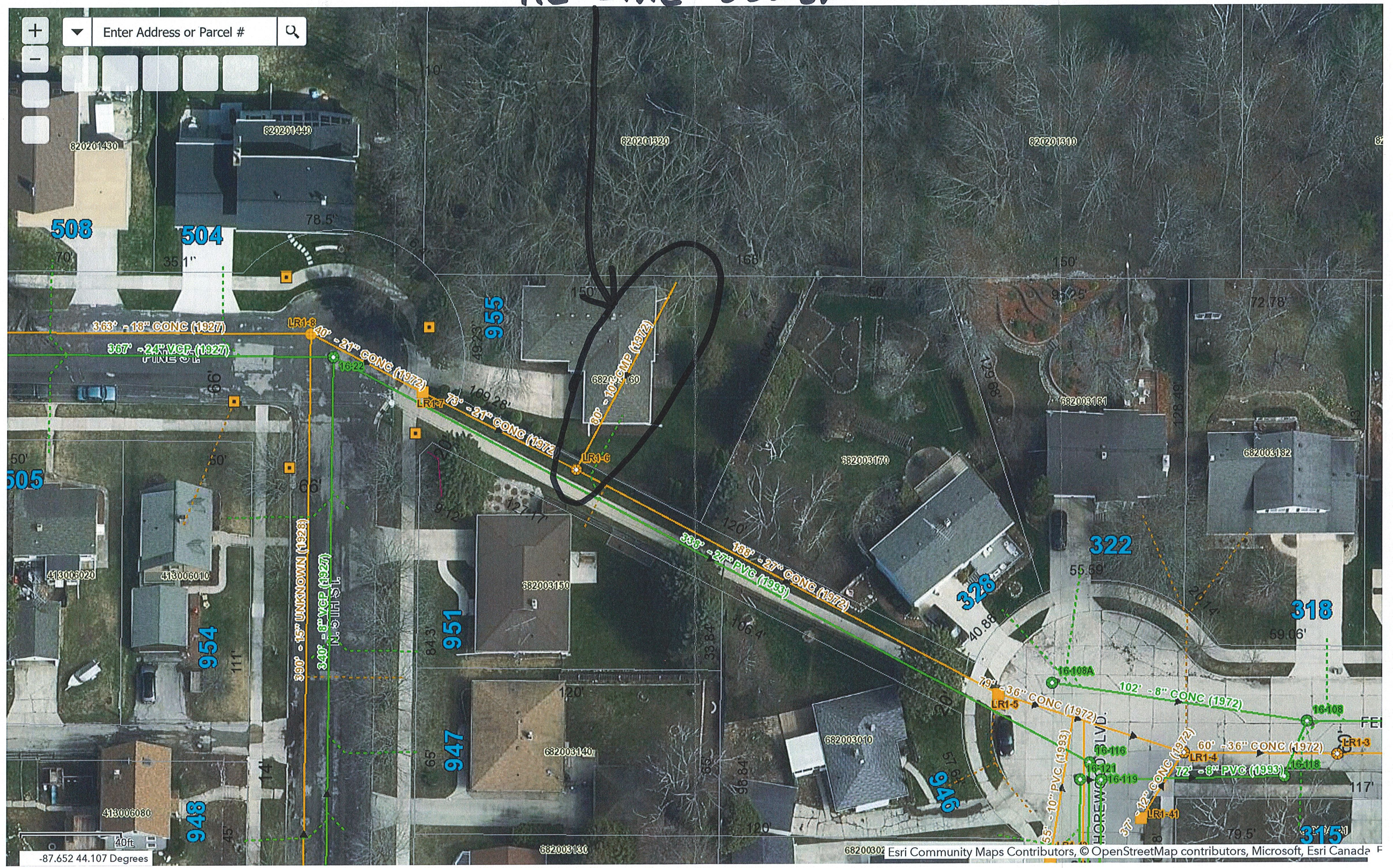


# Re-Line Sewer





Enter Address or Parcel #

# OPTION #4

608

604

520

516

NEW INLETS & INLET LEADS

343° - 18" CONC (1927)

363° - 18" CONC (1927)

327° - 8" VCP (1927)

367° - 24" VCP (1927)

PINE ST.

37° - 10" VCP (999)

LR1-9

LR1-53

N. 6TH ST.

447° - 8" VCP (1927)

NEW INLETS & INLET LEADS

116° - 8" PVC (1999)

87'

43.5'  
607

100'

955

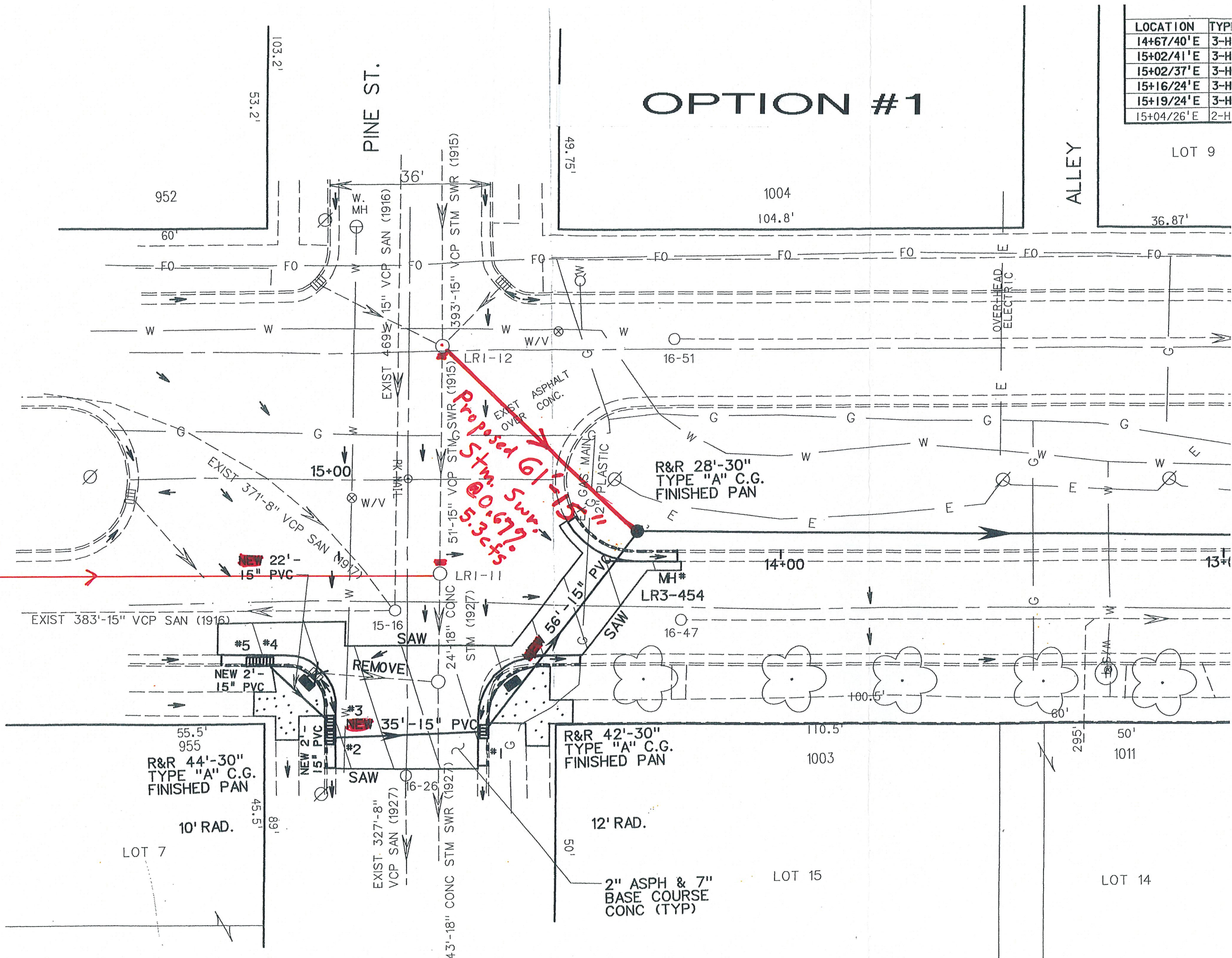
20ft

-87.654 44.107 Degrees



LOCATION	TYP
14+67/40'E	3-H
15+02/41'E	3-H
15+02/37'E	3-H
15+16/24'E	3-H
15+19/24'E	3-H
15+04/26'E	2-H

# OPTION #1



Exist.  
389' - 15"  
Stm. Swr.

Proposed 61" 5.3 cfs @ 0.679'

48, 49, 50, 51, 52, 53, 54, 55, 56, 57, 58, 59, 60, 61, 63

LOT 7

LOT 15

LOT 14