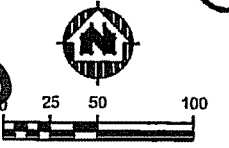


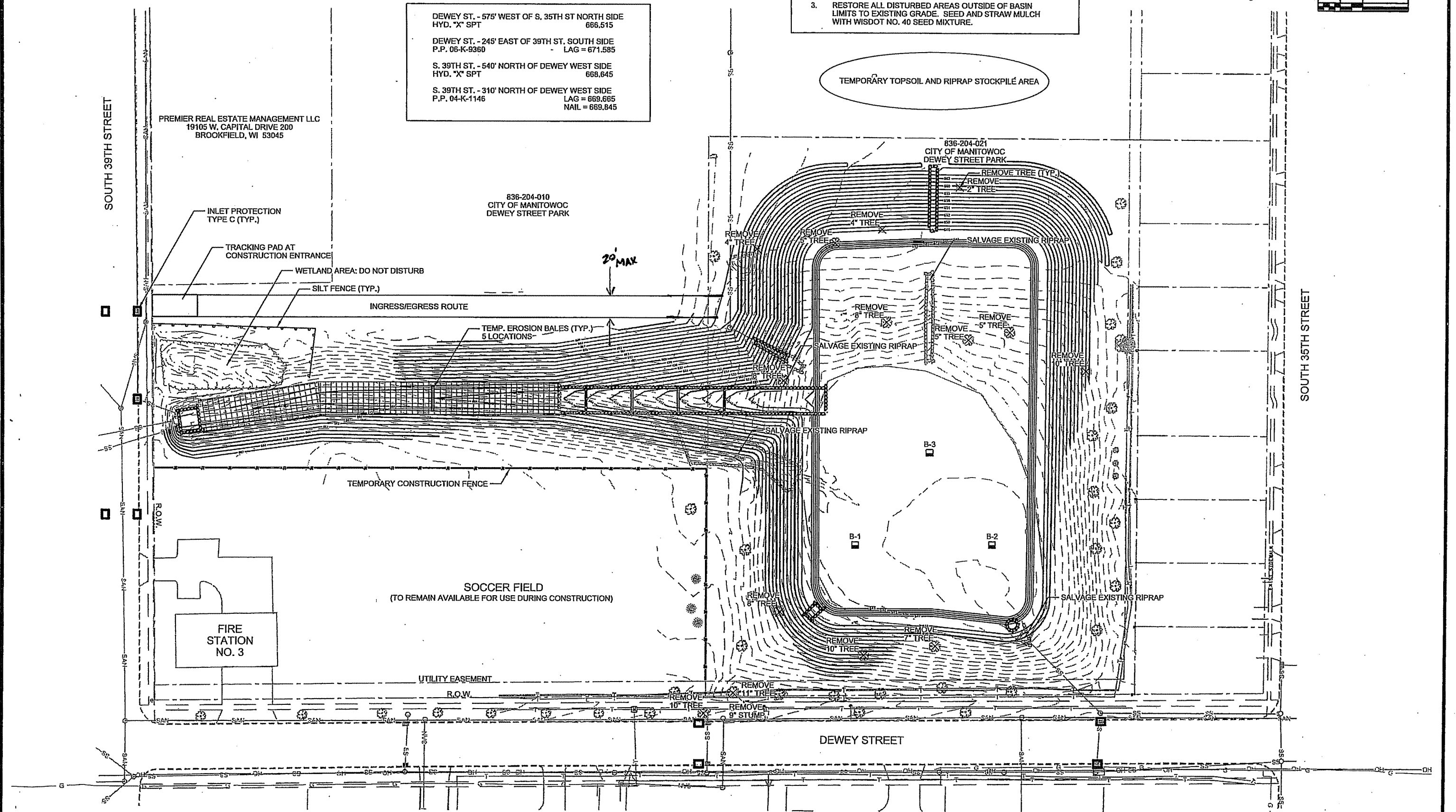
Exhibit B



- NOTES:
1. EROSION CONTROL TO BE INSTALLED BEFORE SITE CLEARING, GRUBBING, AND REMOVALS COMMENCE.
 2. ALL TREES NOT CALLED TO BE REMOVED SHALL BE PROTECTED
 3. RESTORE ALL DISTURBED AREAS OUTSIDE OF BASIN LIMITS TO EXISTING GRADE. SEED AND STRAW MULCH WITH WISDOT NO. 40 SEED MIXTURE.

BENCHMARKS

DEWEY ST. - 575' WEST OF S. 35TH ST NORTH SIDE HYD. "X" SPT	666.515
DEWEY ST. - 245' EAST OF 39TH ST. SOUTH SIDE P.P. 06-K-9360	LAG = 671.585
S. 39TH ST. - 540' NORTH OF DEWEY WEST SIDE HYD. "X" SPT	668.645
S. 39TH ST. - 310' NORTH OF DEWEY WEST SIDE P.P. 04-K-1146	LAG = 669.665 NAIL = 669.645



PROJECT NO:	SCALE:	AS SHOWN	NO.	DATE	REVISION	BY
0511030						
PROJECT DATE:	01/17/02					
CHECKED BY:	UAI					
PLAT DATE:	ST-1 - EROSION CONTROL PLAN	20020103	10:30:11 AM			

MSA
 TRANSPORTATION • MUNICIPAL DEVELOPMENT • ENVIRONMENTAL
 2901 International Lane Madison, WI 53704
 608-242-7779 1-800-448-0679 Fax: 608-242-5664
 Web Address: www.msa-ps.com
 © MSA Professional Services, Inc.

EROSION CONTROL PLAN

DEWEY STREET STORMWATER BASIN
 CITY OF MANITOWOC
 MANITOWOC, WISCONSIN

FILE NO.	05571010
SHEET	ST-1

13-3-26