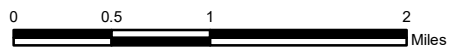


Map 1: Location Map

City of Manitowoc

 City Limits

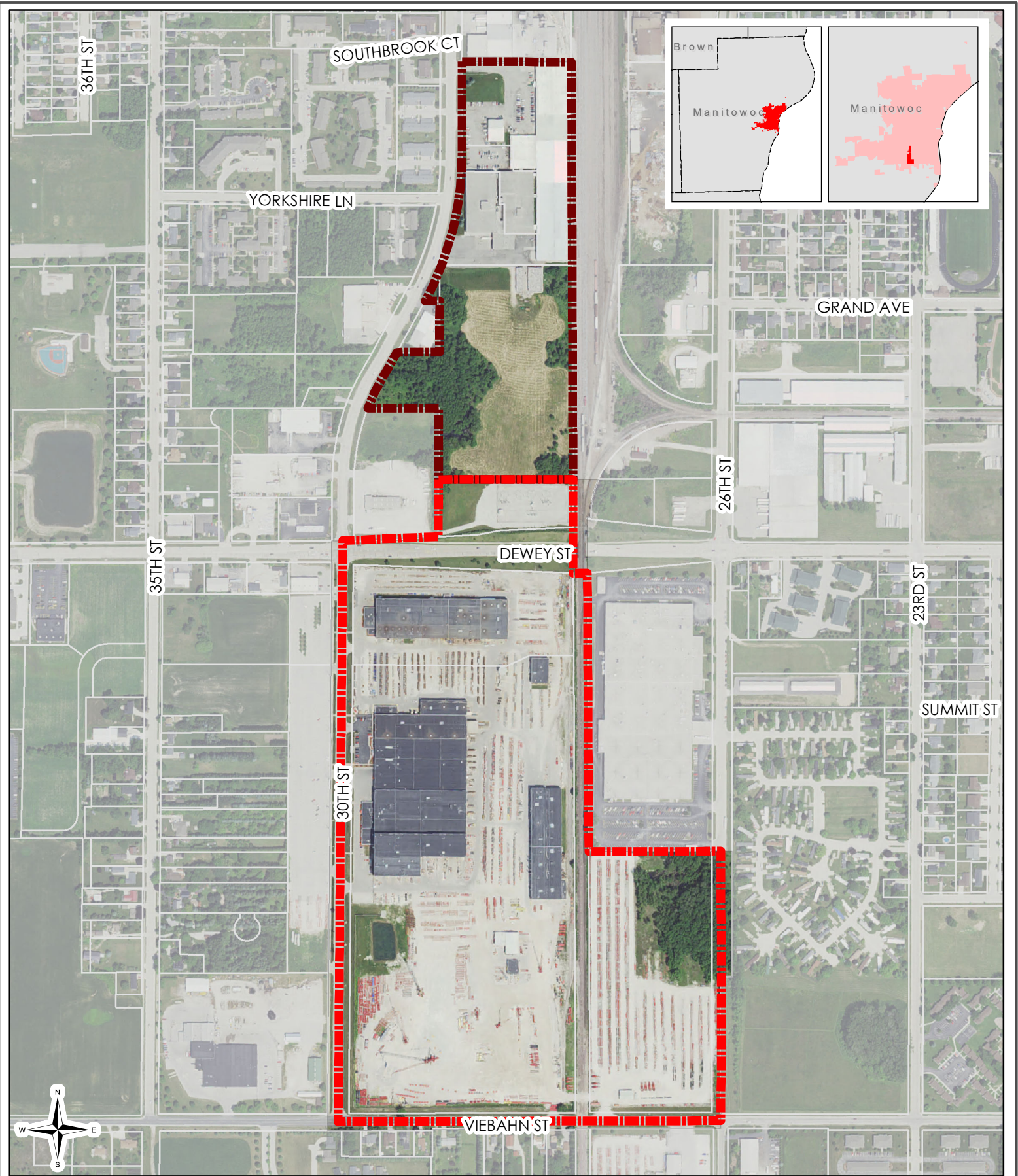
 TID No. 20 Proposed Amended Area



vierbicher
planners | engineers | advisors

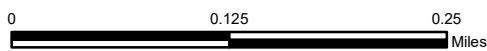


REEDSBURG - MADISON - PRAIRIE DU CHIEN - MILWAUKEE METRO
N27 W23957 Paul Road, Suite 105, Pewaukee, WI 53072
Phone: (262) 875-5000 Fax: (608) 826-0530



Map 2: Proposed District Boundary

City of Manitowoc

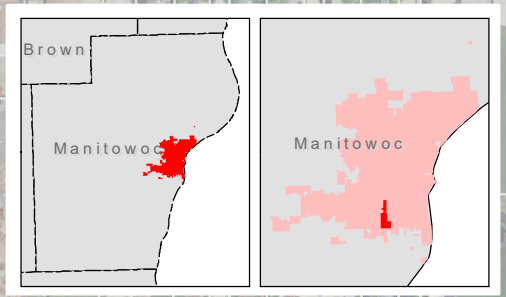
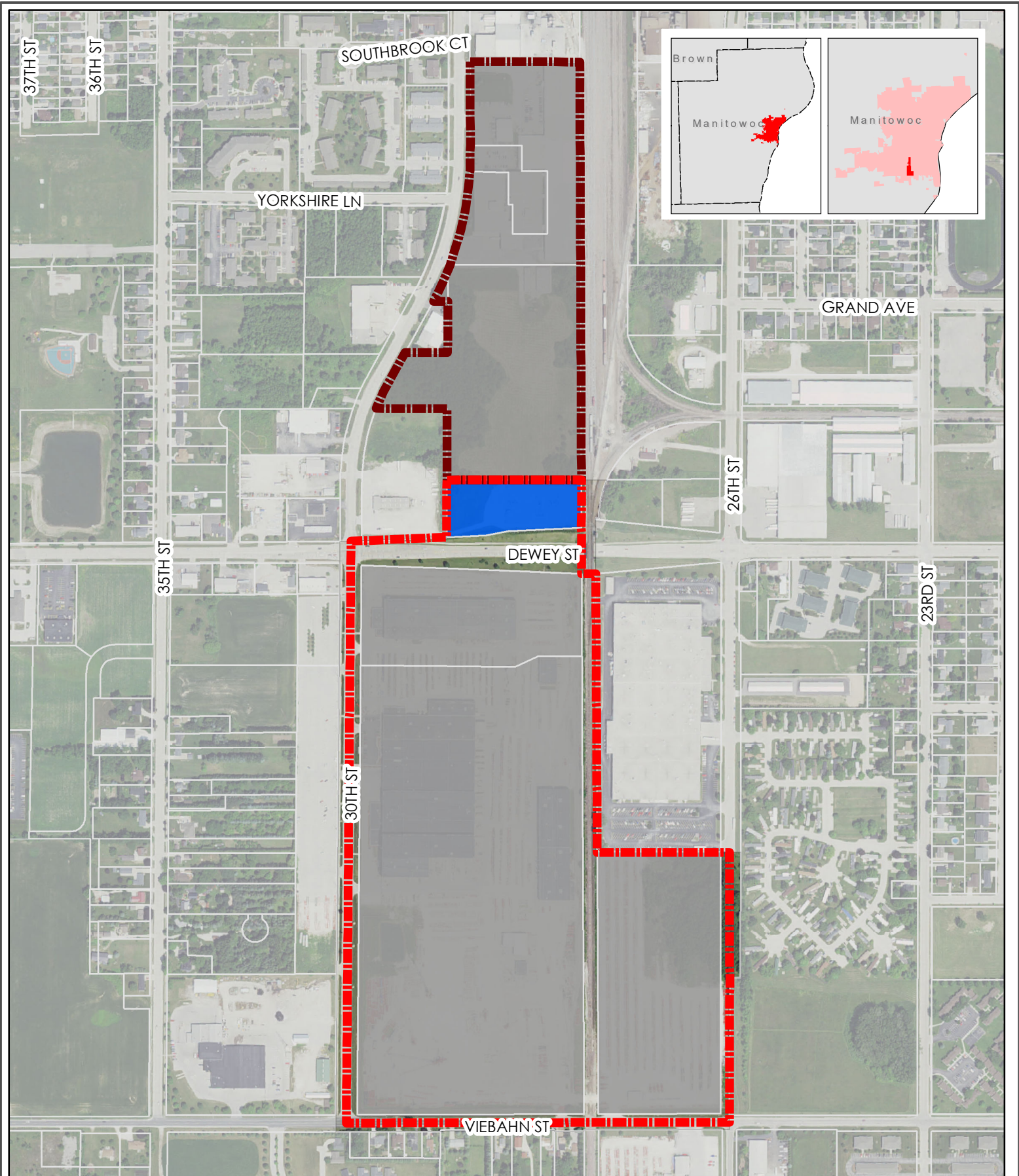


Proposed TID No. 20 Amend No. 1
Existing TID No. 20 Boundary

vierbicher
planners | engineers | advisors



REEDSBURG - MADISON - PRAIRIE DU CHIEN - MILWAUKEE METRO
N27 W23957 Paul Road, Suite 105, Pewaukee, WI 53072
Phone: (262) 875-5000 Fax: (608) 826-0530





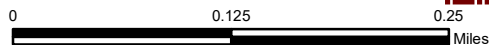
Map 4: Existing Land Use

City of Manitowoc



Proposed TID No. 20 Amend No. 1
Existing TID No. 20 Boundary

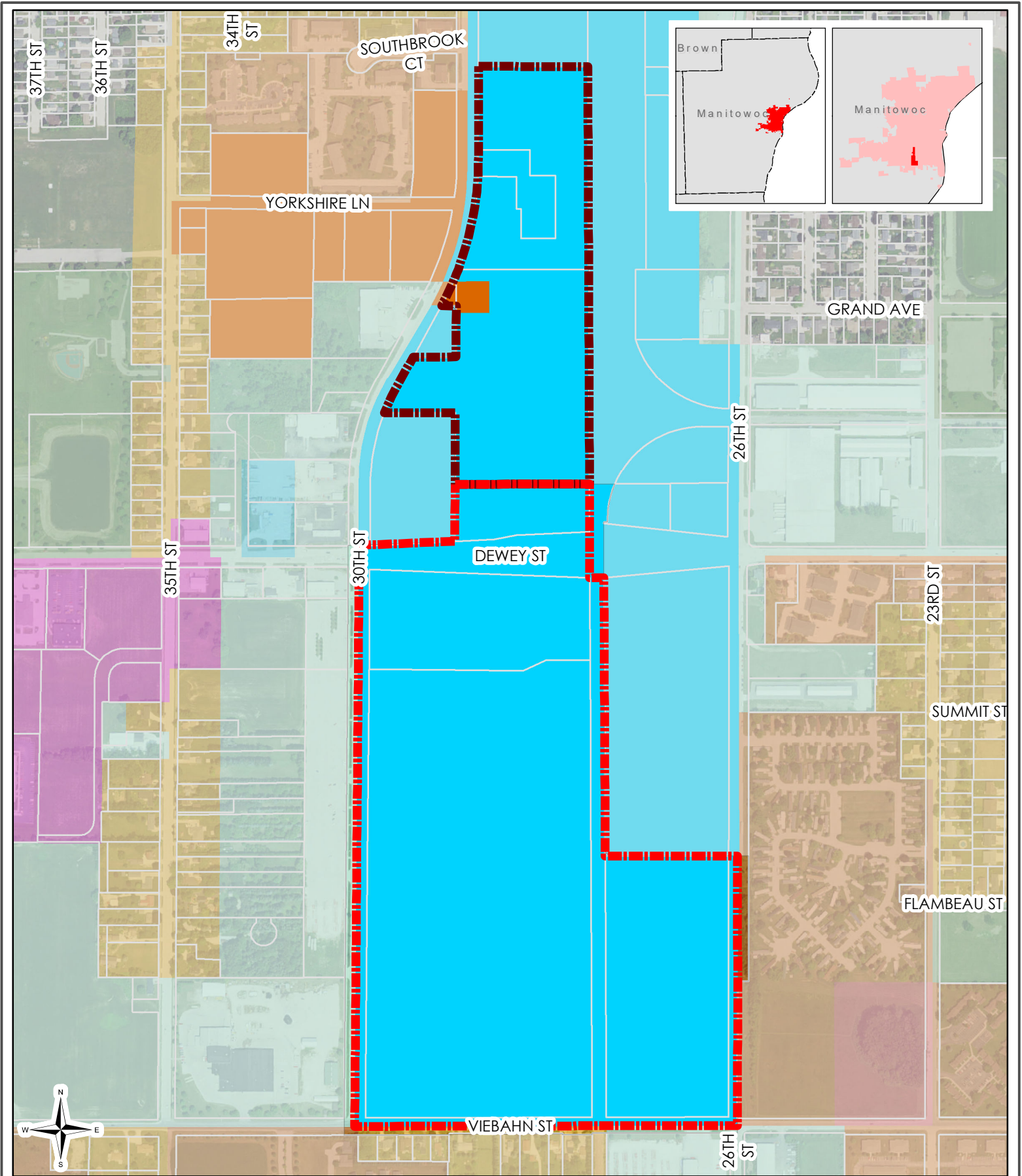
-  Industrial
-  Public
-  Vacant



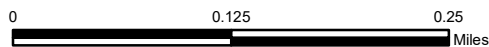
vierbicher
planners | engineers | advisors







REEDSBURG - MADISON - PRAIRIE DU CHIEN - MILWAUKEE METRO
N27 W23957 Paul Road, Suite 105, Pewaukee, WI 53072
Phone: (262) 875-5000 Fax: (608) 826-0530



Map 5: Zoning
City of Manitowoc

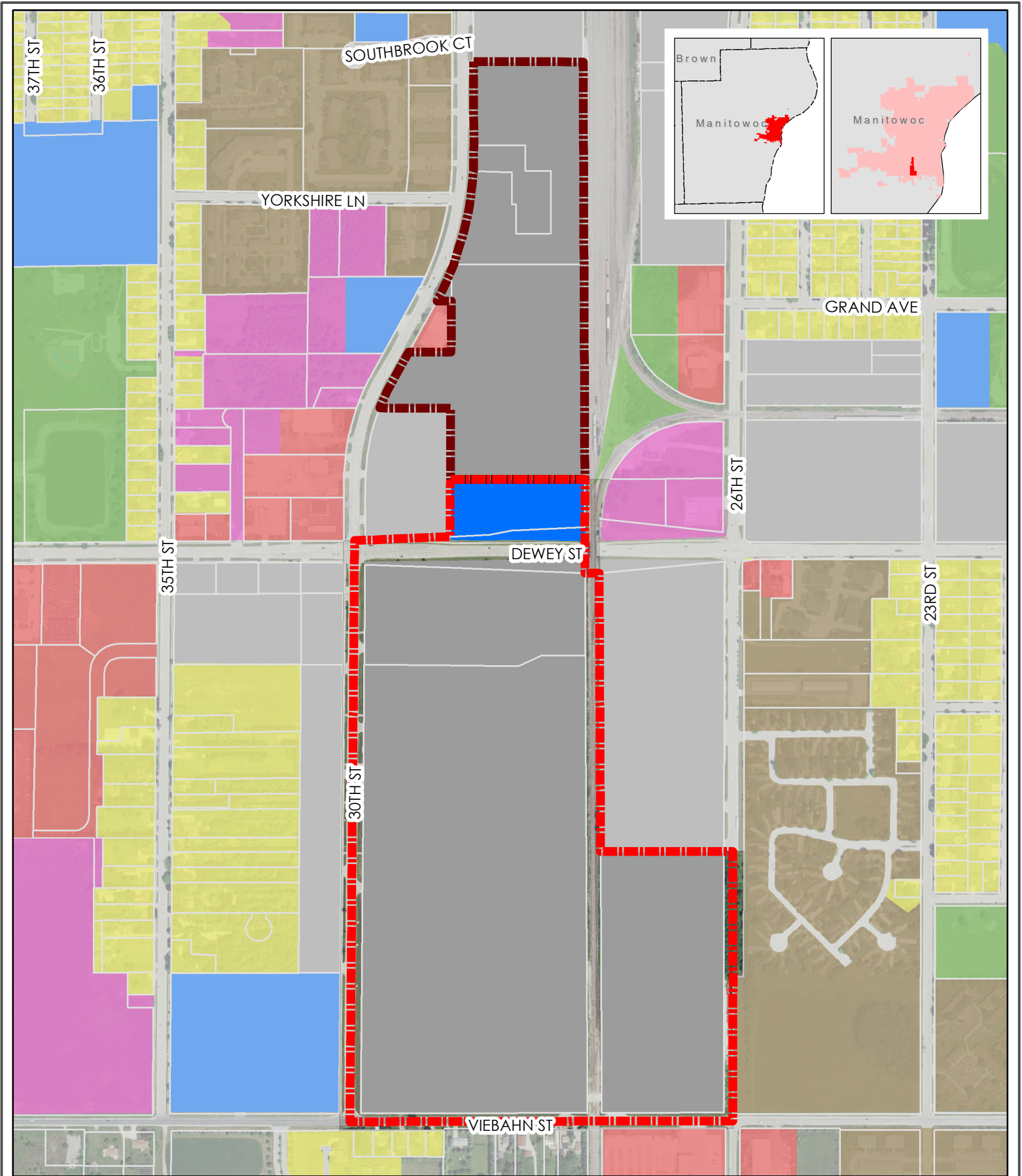


-  Proposed TID No. 20 Amend No. 1
-  Existing TID No. 20 Boundary
-  R-6 Multiple Family
-  I-2 Heavy Industrial



vierbicher
planners | engineers | advisors

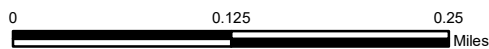


REEDSBURG - MADISON - PRAIRIE DU CHIEN - MILWAUKEE METRO
N27 W23957 Paul Road, Suite 105, Pewaukee, WI 53072
Phone: (262) 875-5000 Fax: (608) 826-0530



Map 6: Future Land Use
 City of Manitowoc

-  Proposed TID No. 20 Amend No. 1
-  Existing TID No. 20 Boundary
-  Institutional & Community Facilities
-  Office/Industrial

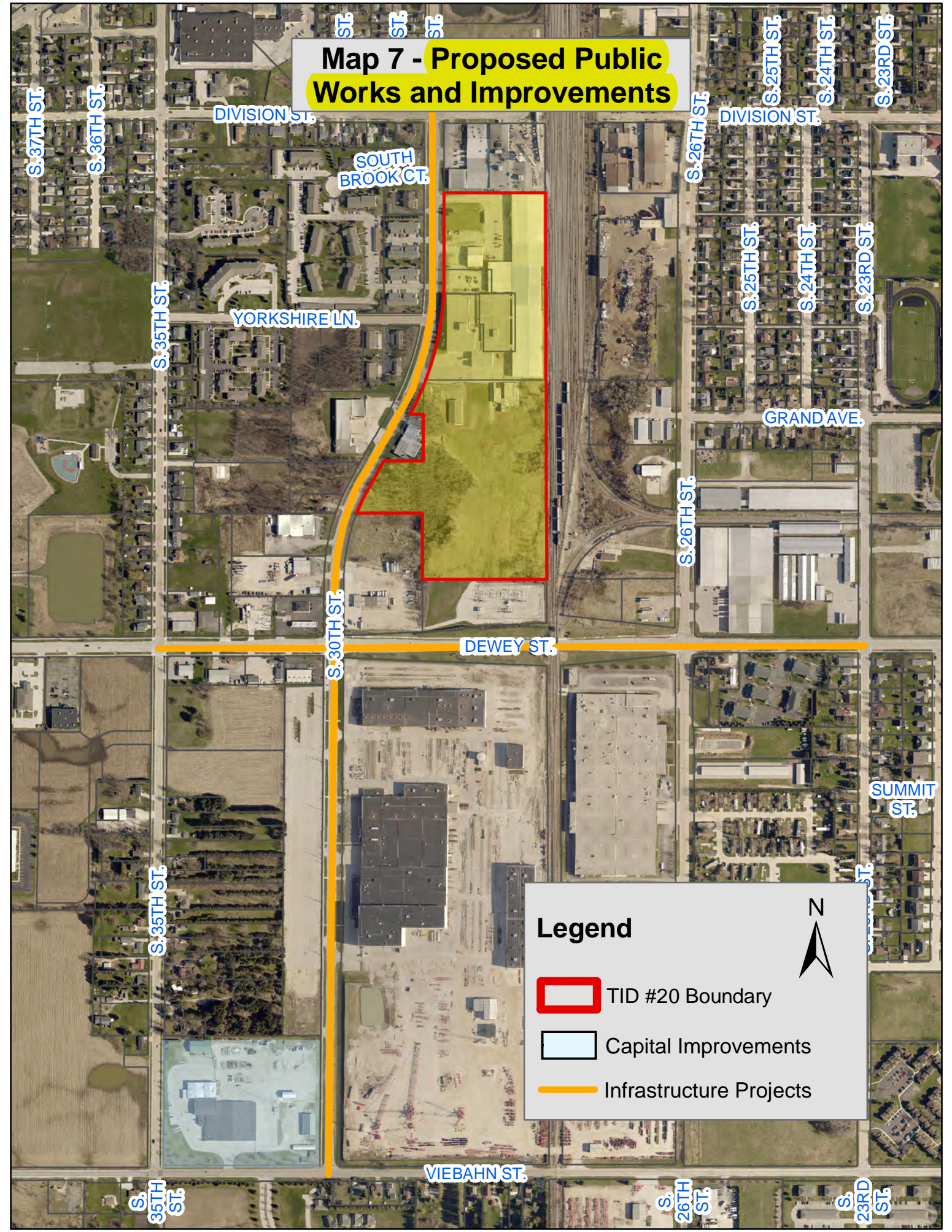


vierbicher
 planners | engineers | advisors


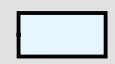




REEDSBURG - MADISON - PRAIRIE DU CHIEN - MILWAUKEE METRO
 N27 W23957 Paul Road, Suite 105, Pewaukee, WI 53072
 Phone: (262) 875-5000 Fax: (608) 826-0530

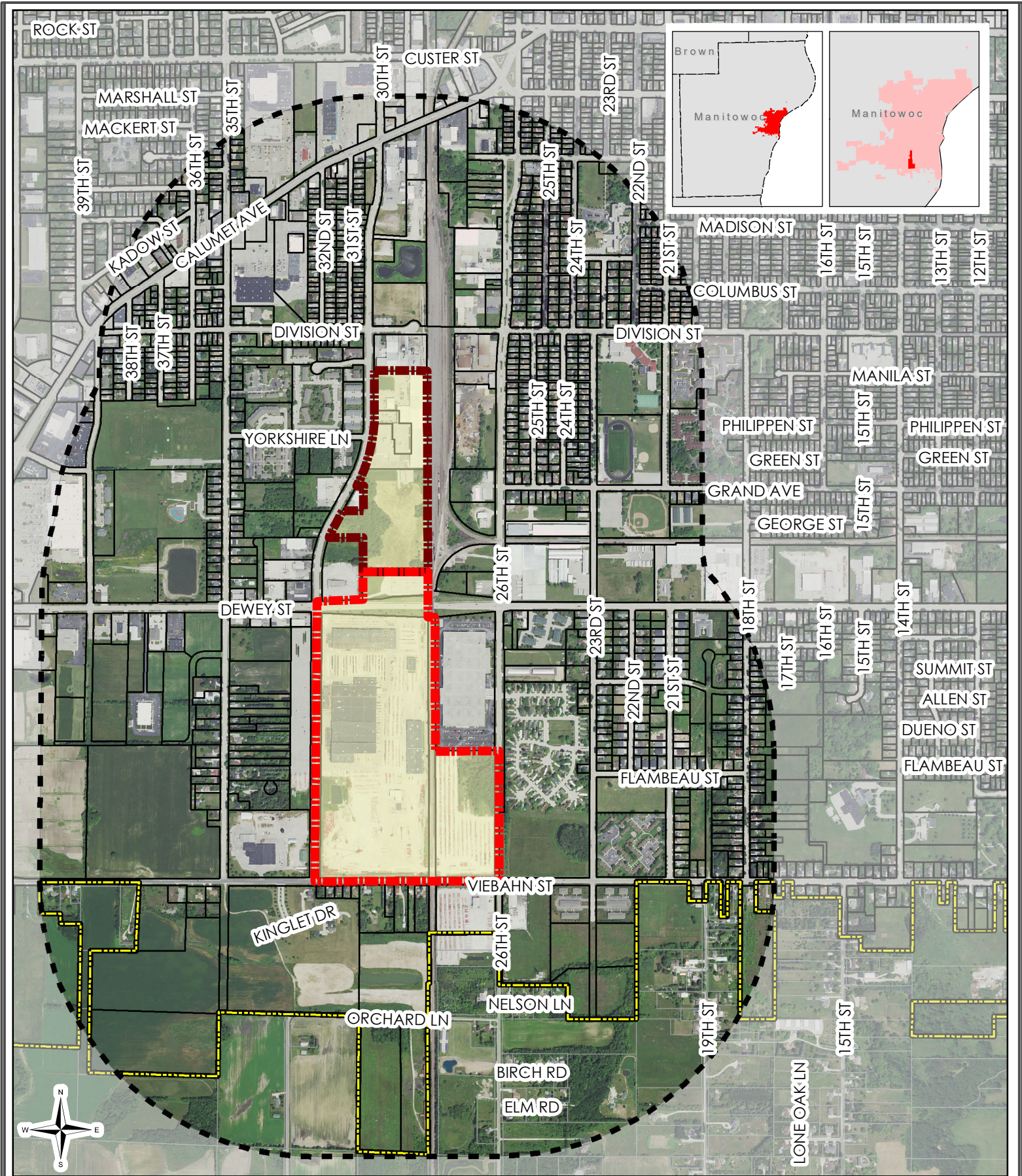
Map 7 - Proposed Public Works and Improvements



Legend

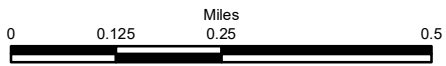
-  TID #20 Boundary
-  Capital Improvements
-  Infrastructure Projects





Map 8: One Half Mile of District Boundary

City of Manitowoc



Proposed TID No. 20 Amend No. 1
Existing TID No. 20 Boundary



Half Mile Radius



City Limits

vierbicher
planners | engineers | advisors



REEDSBURG - MADISON - PRAIRIE DU CHIEN - MILWAUKEE METRO
N27 W23957 Paul Road, Suite 105, Pewaukee, WI 53072
Phone: (262) 875-5000 Fax: (608) 826-0530