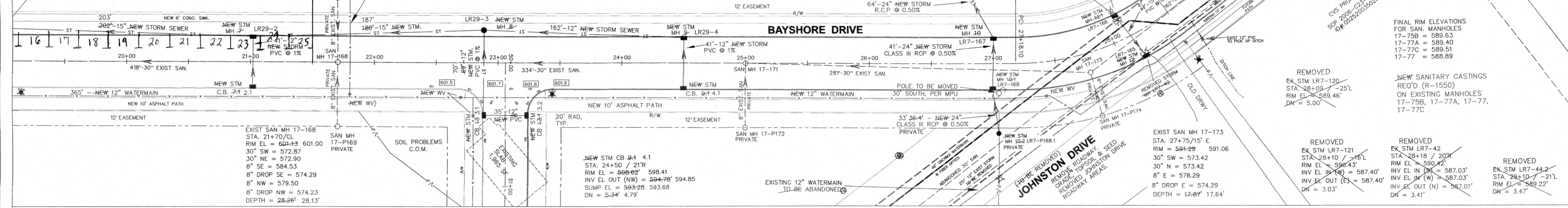


Name	New / Exist	Sta. / Offset	Type	Frame
2.1 STM CB 2-1	NEW	21+02 / 21R	3-H	R-3067
4.1 STM CB 9-1	NEW	24+50 / 21R	3-H	R-3067

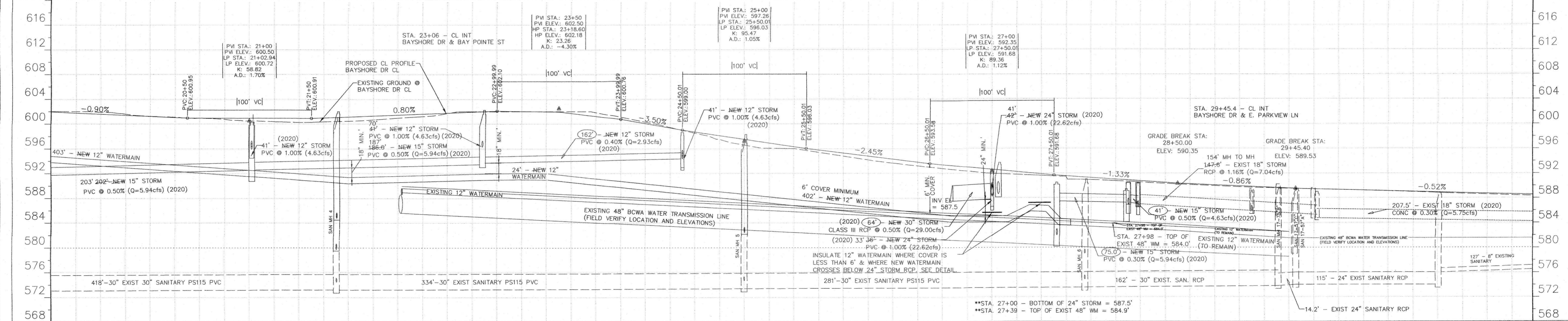
Name	New / Exist	Sta. / Offset	Type	Frame	Comment
LR29-2	NEW	21+02 / 21L	1-H	R-3067	
LR29-3	NEW	22+88.5 / 27L	1-J	R-1550	
LR29-4	NEW	24+50 / 21L	4-H	R-3067	
LR7-167	NEW	27+00 / 21L	4-H	R-3067	
LR7-168	NEW	27+00 / 21R	4-H	R-3067	
LR7-P168.1	NEW	27+05.1 / 56R	1-J	R-1550	
STM OUT 3	NEW	27+52.4 / 83L	SEE DETAIL	SEE DETAIL	
STM LR7-120	EXIST	28+08.6 / 25L	1-J	R-2560	REMOVED
STM LR7-121	EXIST	28+10.3 / 16L	3-H	R-3067	REMOVED
STM LR7-42	EXIST	28+18.1 / 20R	3-H	R-3067	REMOVED
LR7-165	NEW	28+18.1 / 21R	4-H	R-3067	

Name	New / Exist	Sta. / Offset	Type	Frame	Comment
STM INL 1	NEW	29+09.9 / 21L	3-H	R-3067	3.5' DEPTH
STM LR7-44.2	EXIST	29+09.9 / 21L	3-H	R-3067	REMOVED

EXIST SAN MH 17-171
 STA. 25+00/CL
 RIM = 597.43
 30" SW = 573.07
 30" NE = 573.09
 8" SE = 581.50
 8" DROP SE = 574.26
 DEPTH = 24.40'



Structure Name	Station	Dimensions	Material	Notes
NEW STM CB 2-1	21+02	21' x 21'	PS115	DN = 5.60' 5.27'
NEW STM INL-MH-7	21+02	21' x 21'	PS115	DN = 9.25' 9.10'
NEW STM MH-8	22+89	27"	PS115	DN = 8.78' 8.83'
NEW STM INL-MH-9	24+50	21' x 21'	PS115	DN = 5.75' 5.42'
NEW STM INL-MH-10	27+00	21' x 21'	PS115	DN = 5.62' 4.96'
NEW STM MH-10-2	27+05	56"	PS115	DN = 4.71' 4.75'
NEW STM INL-MH-12	28+18	21' x 21'	PS115	DN = 3.47'
NEW STM INL 1	29+10	21' x 21'	PS115	DN = 3.47'



STATION	20+00	21+00	22+00	23+00	24+00	25+00	26+00	27+00	28+00	29+00	30+00	31+00
PROPOSED CL ELEV.	601.76	601.58	601.40	600.87	600.74	600.72	600.74	600.83	600.98	601.14	601.30	601.46
PROPOSED FL ELEV.	601.35	601.17	600.99	600.81	600.63	600.45	600.34	600.30	600.32	600.41	600.56	600.72
EXIST. RCP	602.00	601.91	601.59	601.25	601.10	600.94	600.75	600.49	600.36	600.25	600.35	600.48

Bayshore Dr Construction
 Manistowoc, WI

CLIENT: The City of Manitowoc
 DATE: 9/23/2019, rev11/14/19, rev12/12/19, rev1/16/20, rev1/23/20
 JOB NO.: 17349su
 CAD FILE: C:\GMA\PRIVATE\BAY DR CONSTRUCTION\2020

STREET: BAYSHORE DR. - WALDO BLVD. TO E. REED AVE.
 STATION TO 2020 AS-BUILT 19-12-11 OF 10