



P.O. Box 1566
Manitowoc, WI 54221-1566
920-682-0311
1-800-838-0100
Fax: 920-682-0313

August 25, 2014

Mayor Justin Nickels
& the Common Council
City Hall
900 Quay Street
Manitowoc WI 54220

RE: Land Purchase in the City of Manitowoc

Dear Mayor Nickels and the Common Council:

I currently own parcel 449008011

Name: ONLY C GOOD LLC
Mailing Address: 1851 S ALVERNO RD
MANITOWOC, WI 54220

Americollect now occupies the land and we are adding an addition that will double us in size. At this time I am looking to purchase 3 acres of land to the EAST of the current facility - which we believe to be best location for the parking lot for the building addition.

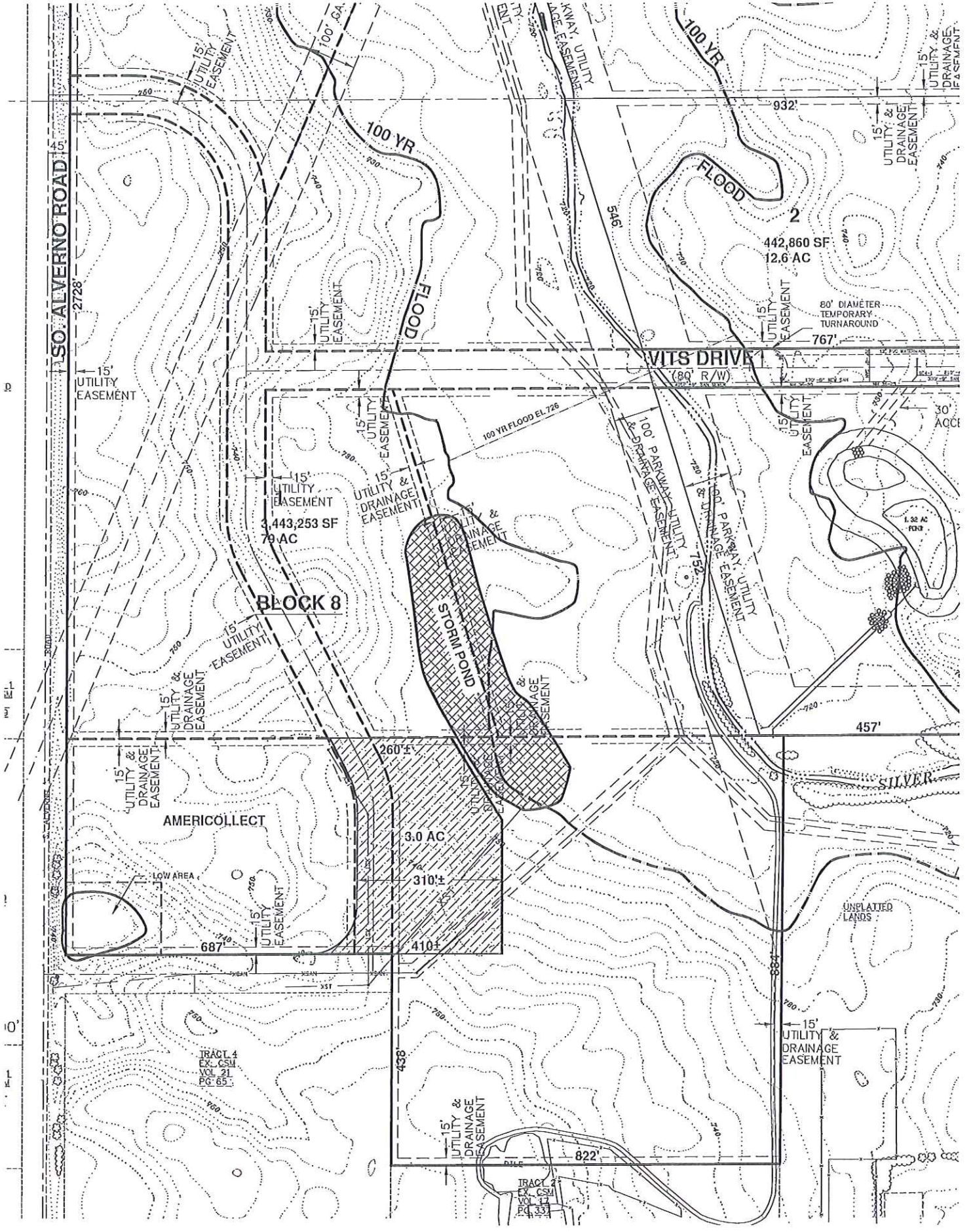
I am attaching the SMI document so you can better see the location of the 3 acres.

We are hoping to get an answer quickly as we intend to break ground in the next couple weeks. The purchase would again be in the name of ONLY C GOOD LLC.

Thanks for the consideration!

Sincerely,

Kenlyn T Gretz



SO. ALVERNO ROAD

15' UTILITY EASEMENT

15' UTILITY EASEMENT

15' UTILITY & DRAINAGE EASEMENT

15' UTILITY & DRAINAGE EASEMENT

15' UTILITY EASEMENT

15' UTILITY & DRAINAGE EASEMENT

15' UTILITY & DRAINAGE EASEMENT

BLOCK 8

AMERICOLLECT

LOW AREA

TRACT 4
EX. CSU
VOL. 21
PG. 65

TRACT 2
EX. CSU
VOL. 11
PG. 33

3,443,253 SF
79 AC

3.0 AC

310'

410'

STORM POND

15' UTILITY & DRAINAGE EASEMENT

15' UTILITY & DRAINAGE EASEMENT

15' UTILITY & DRAINAGE EASEMENT

15' UTILITY EASEMENT

15' UTILITY EASEMENT

15' UTILITY & DRAINAGE EASEMENT

15' UTILITY & DRAINAGE EASEMENT

15' UTILITY & DRAINAGE EASEMENT

15' UTILITY & DRAINAGE EASEMENT

15' UTILITY & DRAINAGE EASEMENT

VITS DRIVE

780' R/W

100' PARKWAY UTILITY & DRAINAGE EASEMENT

100' PARKWAY UTILITY & DRAINAGE EASEMENT

100' PARKWAY UTILITY & DRAINAGE EASEMENT

100' PARKWAY UTILITY & DRAINAGE EASEMENT

100' PARKWAY UTILITY & DRAINAGE EASEMENT

100' PARKWAY UTILITY & DRAINAGE EASEMENT

100' PARKWAY UTILITY & DRAINAGE EASEMENT

15' UTILITY EASEMENT

15' UTILITY EASEMENT

15' UTILITY EASEMENT

15' UTILITY EASEMENT

15' UTILITY EASEMENT

15' UTILITY & DRAINAGE EASEMENT

15' UTILITY & DRAINAGE EASEMENT

15' UTILITY & DRAINAGE EASEMENT

80' DIAMETER TEMPORARY TURNAROUND

1.32 AC

457'

UNPLATTED LANDS

15' UTILITY & DRAINAGE EASEMENT

15' UTILITY & DRAINAGE EASEMENT

15' UTILITY & DRAINAGE EASEMENT

15' UTILITY & DRAINAGE EASEMENT

15' UTILITY & DRAINAGE EASEMENT

30' ACC'T

15' UTILITY & DRAINAGE EASEMENT

15' UTILITY & DRAINAGE EASEMENT

15' UTILITY & DRAINAGE EASEMENT

15' UTILITY & DRAINAGE EASEMENT

15' UTILITY & DRAINAGE EASEMENT

100 YR FLOOD

100 YR FLOOD

100 YR FLOOD EL. 726

100 YR FLOOD

100 YR FLOOD

100 YR FLOOD

100 YR FLOOD

100 YR FLOOD

932'

767'

260'

260'

438'

822'

822'

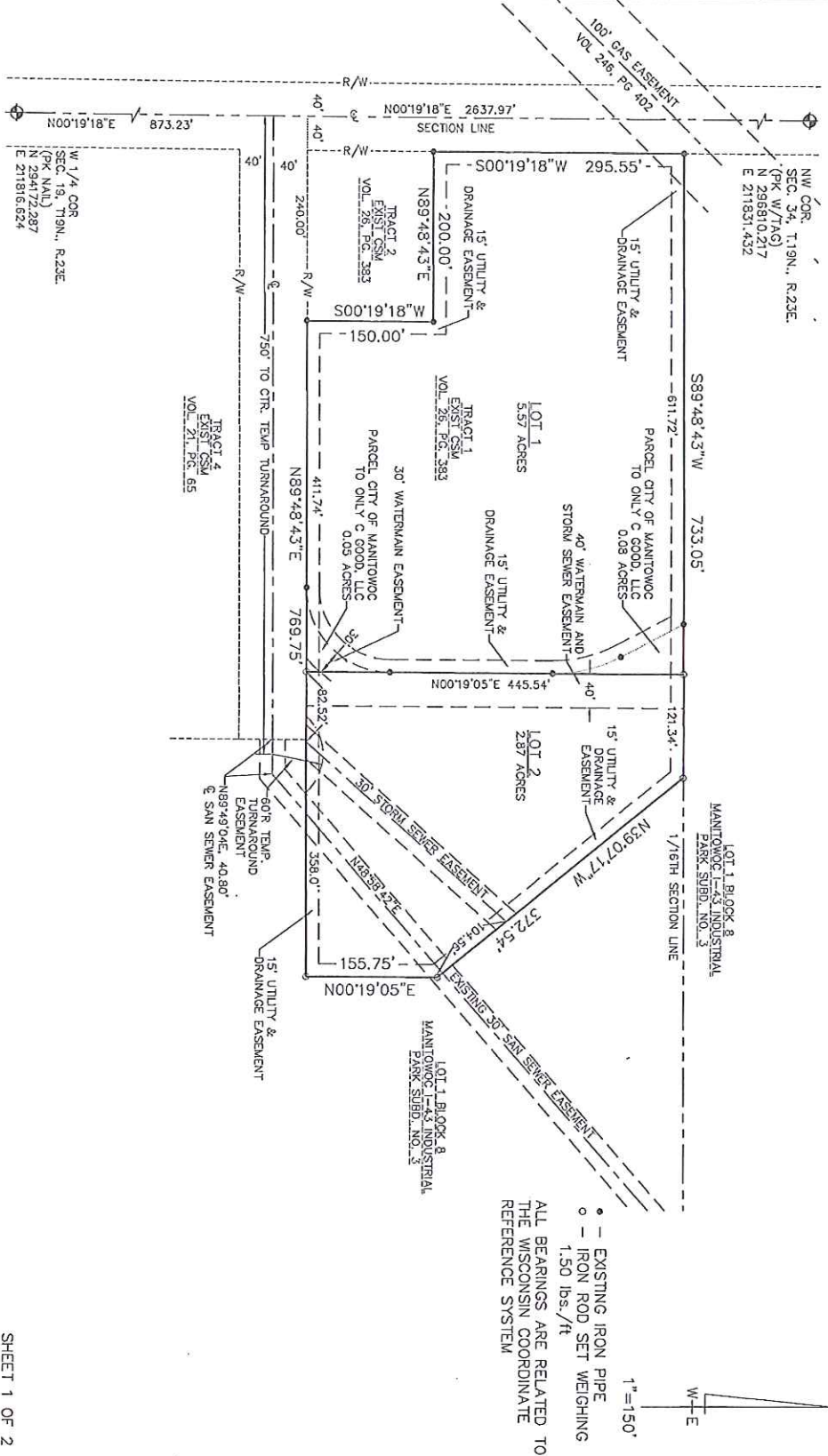
822'



CIVIL & STRUCTURAL ENGINEERS
 102 REVERE DRIVE
 MANITOWOC, WI. 54220-3147
 PHONE 684-5583 FAX 684-5584

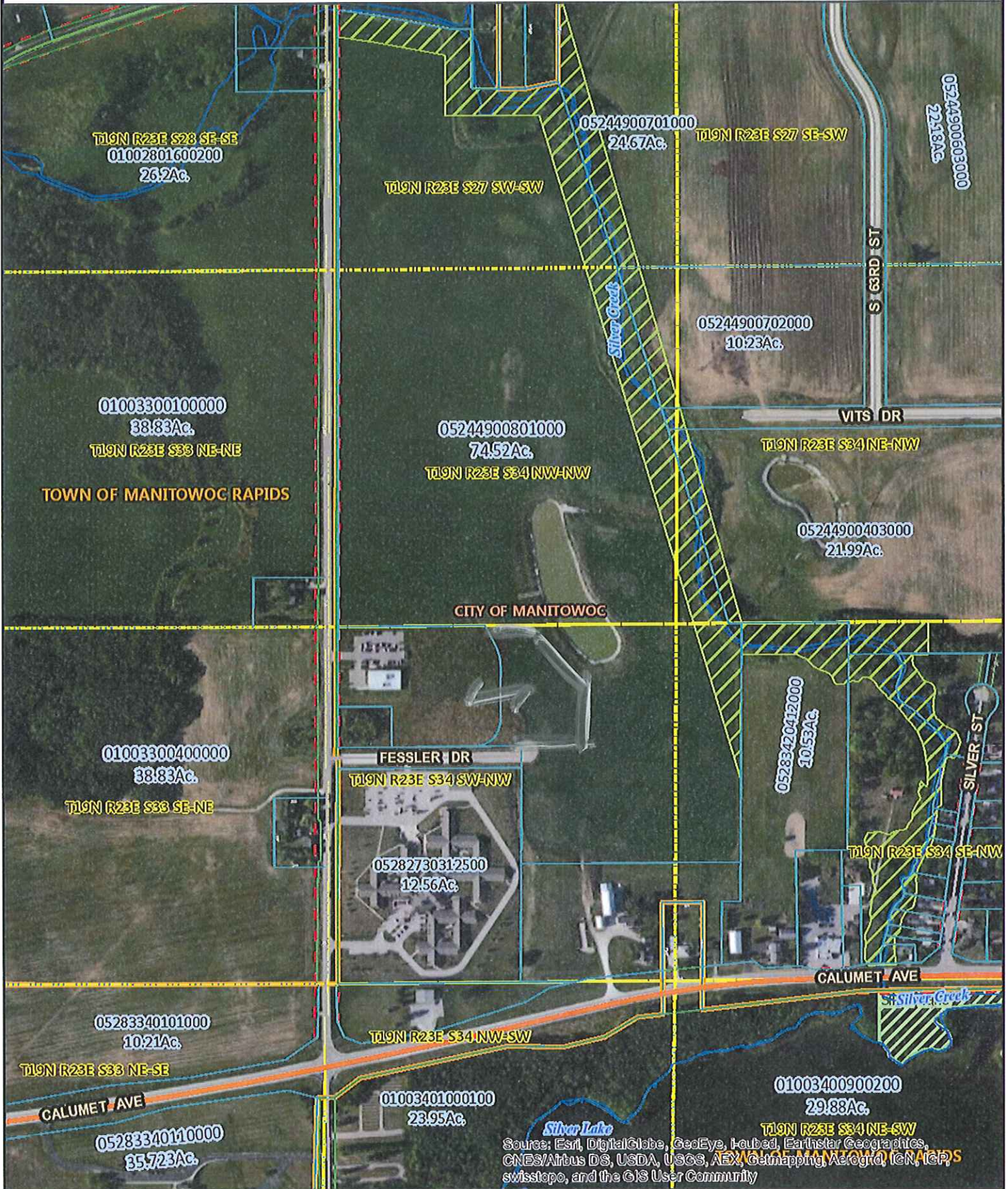
14289035

CERTIFIED SURVEY LOCATED IN THE SW 1/4 OF THE NW 1/4 OF SECTION 34, T.19N., R.23E., CITY OF MANITOWOC, MANITOWOC COUNTY, WISCONSIN, BEING A RESURVEY OF TRACT 1 OF A CERTIFIED SURVEY RECORDED IN VOLUME 26, PAGE 383 AND PART OF LOT 1, BLOCK 8 OF THE MANITOWOC I-43 INDUSTRIAL PARK SUBDIVISION NO. 3



1" = 150'
 N
 W-E
 ● - EXISTING IRON PIPE
 ○ - IRON ROD SET WEIGHING 1.50 lbs./ft
 ALL BEARINGS ARE RELATED TO THE WISCONSIN COORDINATE REFERENCE SYSTEM

Manitowoc County Advanced Access Viewer



Author:
Date Printed: 10/1/2014



The burden for determining fitness for use rests entirely upon the user of this website. Manitowoc County and its co-producers will not be liable in any way for accuracy of the data and they assume no responsibility for direct, indirect, consequential, or other damages.