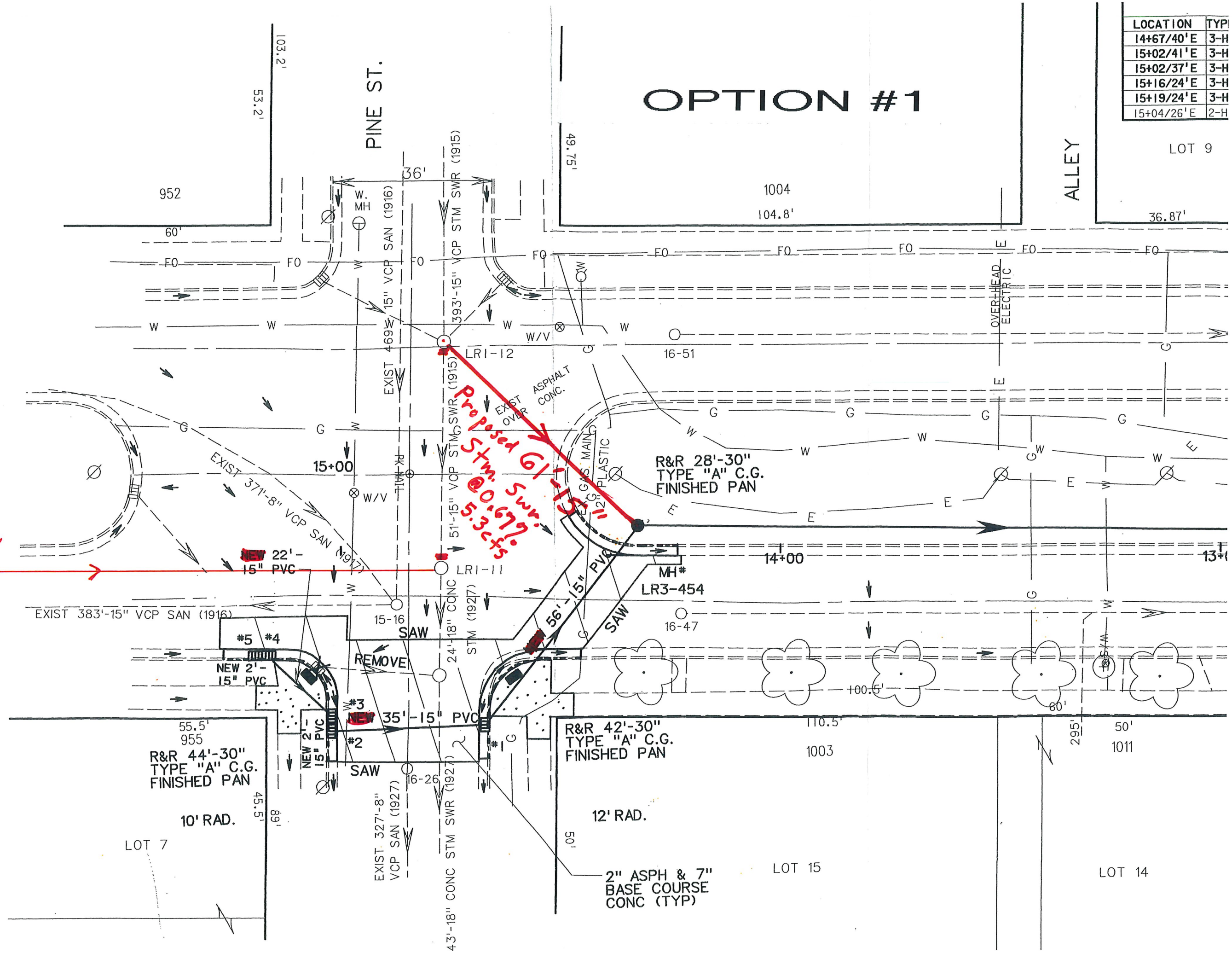


LOCATION	TYP
14+67/40'E	3-H
15+02/41'E	3-H
15+02/37'E	3-H
15+16/24'E	3-H
15+19/24'E	3-H
15+04/26'E	2-H

OPTION #1



Exist.
389' - 15"
Stm. Swr.

Proposed 61' @ 15"
Stm. Swr.
@ 5+0.67 to 5+3.24

48, 49, 50, 51, 52, 53, 54, 55, 56, 57, 58, 59, 60, 61, 63

LOT 7

LOT 15

LOT 14

LOT 9

PINE ST.

ALLEY

R&R 44'-30"
TYPE "A" C.G.
FINISHED PAN

R&R 42'-30"
TYPE "A" C.G.
FINISHED PAN

R&R 28'-30"
TYPE "A" C.G.
FINISHED PAN

2" ASPH & 7"
BASE COURSE
CONC (TYP)

OVERHEAD
ELECTRIC

EXIST. 327'-8"
VCP SAN (1927)

EXIST 383'-15" VCP SAN (1916)

EXIST 371'-8" VCP SAN (1917)

EXIST 469' 15" VCP SAN (1916)

EXIST 51'-15" VCP STM SWR (1915)

EXIST 24'-18" CONC STM (1927)

EXIST 35'-15" PVC

EXIST 43'-18" CONC STM SWR (1927)

EXIST 16-26

EXIST 15-16

EXIST 15-18

EXIST 16-51

EXIST 16-47

EXIST 16-26

EXIST 16-26

EXIST 16-26

EXIST 16-26

EXIST 16-26

EXIST 16-26

EXIST 16-26

EXIST 16-26

EXIST 16-26

EXIST 16-26

EXIST 16-26

EXIST 16-26