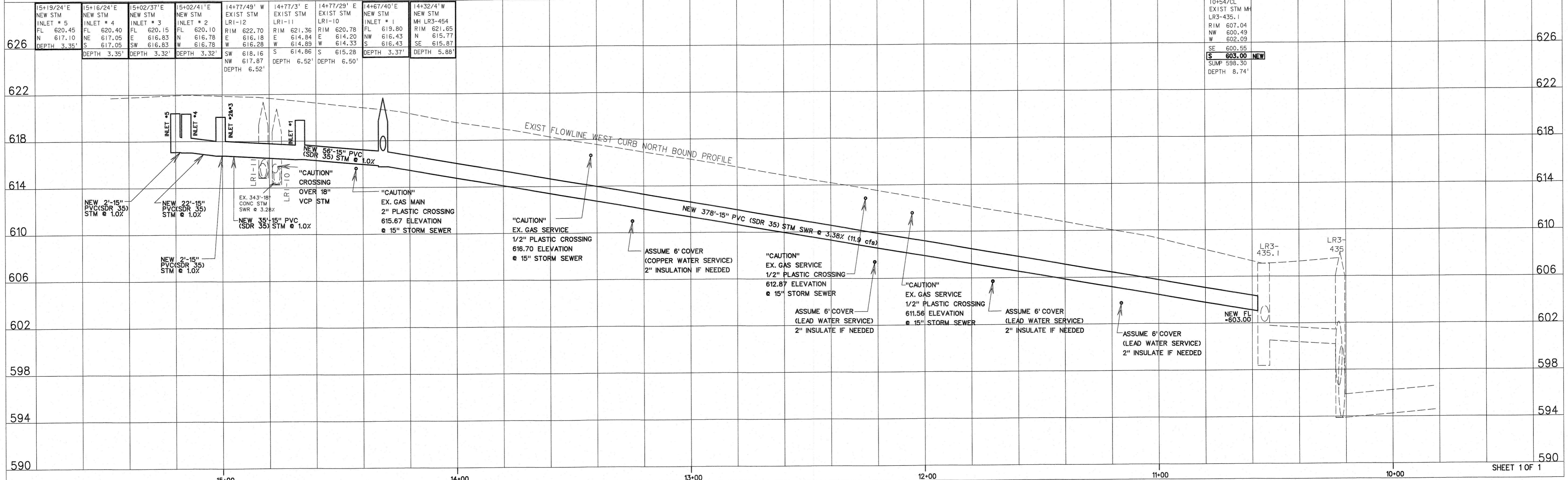
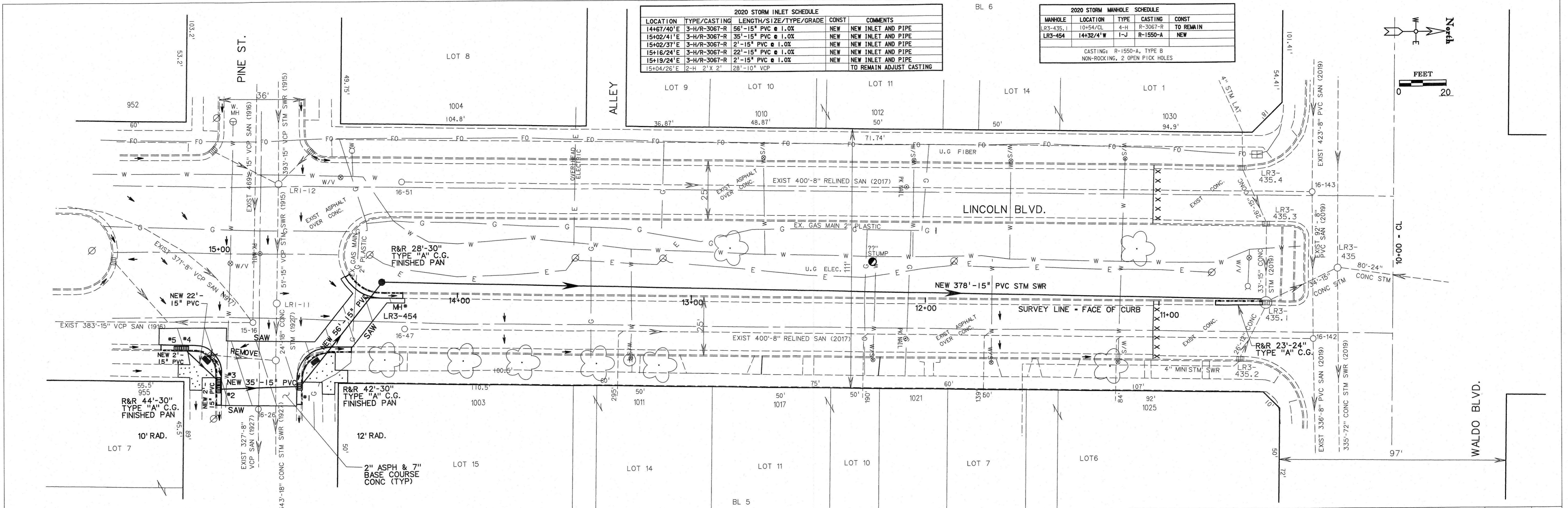


2020 STORM INLET SCHEDULE					
LOCATION	TYPE/CASTING	LENGTH/SIZE/TYP/GRADE	CONST	COMMENTS	
14+67/40'E	3-H/R-3067-R	56'-15" PVC @ 1.0%	NEW	NEW INLET AND PIPE	
15+02/41'E	3-H/R-3067-R	35'-15" PVC @ 1.0%	NEW	NEW INLET AND PIPE	
15+02/37'E	3-H/R-3067-R	2'-15" PVC @ 1.0%	NEW	NEW INLET AND PIPE	
15+16/24'E	3-H/R-3067-R	22'-15" PVC @ 1.0%	NEW	NEW INLET AND PIPE	
15+19/24'E	3-H/R-3067-R	2'-15" PVC @ 1.0%	NEW	NEW INLET AND PIPE	
15+04/28'E	2-H 2'X 2'	28'-10" VCP	NEW	NEW INLET AND PIPE	
				TO REMAIN ADJUST CASTING	

2020 STORM MANHOLE SCHEDULE				
MANHOLE	LOCATION	TYPE	CASTING	CONST
LR3-435.1	10+54/CL	4-H	R-3057-R	TO REMAIN
LR3-454	14+32/4'W	1-J	R-1550-A	NEW

CASTING: R-1550-A, TYPE B
NON-ROCKING, 2 OPEN PICK HOLES



DRAWN BY/DATE: 9-25-20 MZ
 APPROVED BY: 9-28-20 MZ, 10-2-20 MZ
 REVISED BY: 9-28-20 MZ, 10-2-20 MZ
 X-SEC BOOK: ROBOTIC TOTAL STATION 9-23-2020
 LEVELS ON: 1, 2, 3, 4, 5, 6, 7, 8, 9, 10, 11, 12, 13, 14, 15, 16, 17, 18, 19, 20, 21, 22, 23, 24, 25, 26, 27, 28, 29, 30, 31, 32, 33, 34, 35, 36, 37, 38, 39, 40, 41, 42, 43, 44, 45, 46, 47, 48, 49, 50, 51, 52, 53, 54, 55, 56, 57, 58, 59, 60, 61, 63