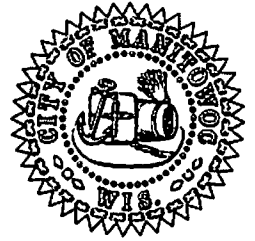


CITY OF MANITOWOC

WISCONSIN, USA

www.manitowoc.org

Date: October 23, 2020

To: Public Infrastructure Committee

From: Greg Minikel, P.E., Engineering Division Manager

Re: North 5th & Pine St. Flooding Issues – Request for Additional Funding (Item #20-0891)

Our surveyor has spent many, many hours collecting data in this area to determine the best way to resolve this flooding problem. He determined that the existing storm sewer outfall on the end of Fenway Terrace draining into the Little Manitowoc River which carries the stormwater from N. 5th and Pine St. is currently completely underwater. This is drastically reducing the storm sewer pipe's capacity. Therefore, to simply add more storm inlets to this system as originally planned does not make any sense at this time. We started to look for other solutions.

The current recommendation for solving or at a minimum greatly improving the current flooding issues at North 5th and Pine St. is to install a new storm sewer on Lincoln Blvd. from Waldo Blvd. to Pine St. (See attached plan). In addition, we will install several new storm inlets at the intersection of Pine St. and Lincoln Blvd. to capture the surface water. When we reviewed video of the rain storms, there is a very large volume of surface stormwater coming to the southeast corner of the intersection of Pine St. and Lincoln Blvd. By taking this stormwater down to Waldo Blvd. and getting this flow off of the Pine St. system should help greatly. The Waldo Blvd. outfall is not underwater, so it can discharge larger volumes of stormwater.

We have received 3 quotes for this work that ranged from \$70,500 to \$89,900. (See attached quotes). The PI Committee, CAWG and Finance previously approved \$50,000 for this project. We are now requesting the PI Committee to approve up to an additional \$40,000 to complete the proposed project. This request will also be brought to the CAWG and Finance Committee.

We recommend the PI Committee to take the following actions regarding this request:

1. Approval of an additional \$40,000 to complete the proposed project.
2. Approval to publicly bid this project in early 2021, with a scheduled completion date of May 15th, 2021.

Dir. of Public Infrastructure Daniel J. Koski
CITY HALL • 900 Quay Street • Manitowoc, WI 54220-4543
Phone (920) 686-6910 • Fax (920) 686-6906

BID QUANTITIES
FOR
2020 STORM SEWER CONSTRUCTION - LINCOLN BLVD ADDED STORM SEWER

CITY OF MANITOWOC CONTRACT NO. WS-20-1

ITEM NO.	ITEM DESCRIPTION	UNITS	BID QUANTITY	UNIT PRICE	TOTAL
LINCOLN BLVD					
(STORM SEWER)					
1.	Mobilization	LS	1	4,300.00	4,300.00
2.	Traffic Control	LS	1	3,300.00	3,300.00
3.	Inlet Protection Type "D"	EA	5	150.00	750.00
4.	Remove & Replace 24" Concrete Curb and Gutter - Type A	LF	23	47.50	1,092.50
5.	Remove & Replace 30" Concrete Curb and Gutter - Type A	LF	114	47.50	5,415.00
6.	Remove & Replace 7" Base Course Concrete	SY	178	72.00	12,816.00
7.	8" Crushed Aggregate Base Course	SY	178	7.87	1,400.86
8.	3/4" Epoxy Coated Tie Bars (Includes Drilling)	EA	88	8.50	748.00
9.	2" H.M.A., Type 4LT 58-28S	SY	178	21.91	3,899.98
10.	Tack Coat	GAL	8	0.01	0.08
11.	Sawing Pavement, Full Depth	LF	120	3.50	420.00
12.	6" Concrete Sidewalk (Removed & Replaced)	SF	368	7.75	2,852.00
13.	Detectable Warning Fields	SF	16	40.00	640.00
14.	Utility Line Opening	EA	1	700.00	700.00
15.	Remove Existing Storm Sewer Pipe	LF	24	14.90	357.60
16.	Removing Storm Inlets	EA	1	255.00	255.00
17.	Furnish & Install 15" PVC SDR-35, Storm Sewer	LF	495	59.10	29,254.50
18.	Furnish & Install Standard Manhole, Type 1, Storm	VF	5.13	440.00	2,257.20
19.	Furnish & Install Type 3 Inlet (2' X 3')	EA	5	1,600.00	8,000.00
20.	Furnish & Install Type "J" Casting (R-1550-A), Storm	EA	1	321.00	321.00
21.	Furnish & Install Type "H" Casting (R-3067-R), Diagonal, Storm	EA	5	453.00	2,265.00
22.	Furnish & Install Trench Backfill	TON	27	13.70	369.90
23.	3" Pulverized Topsoil	SY	487	8.72	4,246.64
24.	Seed (#40), Fertilizer, Mulch & Water	SY	487	3.25	1,582.75
25.	Erosion Mat, Urban Class 1, Type A	SY	487	5.50	2,678.50
TOTAL FOR STORM SEWER					89,922.51

Vinton Construction Company

Bidder

By: 

Ronald Raboine

920-682-0375 or 920-374-0243

Kip Gulseth


BID QUANTITIES FOR 2020 STORM SEWER CONSTRUCTION - LINCOLN BLVD ADDED STORM SEWER ***** CITY OF HANITOWOC CONTRACT NO. WS-20-1					
ITEM NO.	ITEM DESCRIPTION	UNITS	BID QUANTITY	UNIT PRICE	TOTAL
LINCOLN BLVD (STORM SEWER)					
1.	Mobilization	LS	1	*2,000.00	*2,000.00
2.	Traffic Control	LS	1	*500.00	*500.00
3.	Inlet Protection Type "D"	EA	5	*75.00	*375.00
4.	Remove & Replace 24" Concrete Curb and Gutter - Type 1	LF	23	*45.00	*1,035.00
5.	Remove & Replace 30" Concrete Curb and Gutter - Type 1	LF	114	*45.00	*5,130.00
6.	Remove & Replace 7" Base Course Concrete	SY	178	*70.00	*12,460.00
7.	8" Crushed Aggregate Base Course	SY	178	*6.00	*1,068.00
8.	3/4" Epoxy Coated Tie Bars (Includes Drilling)	EA	88	*11.00	*968.00
9.	2" R.M.A., Type 4LT 58-28S	SY	178	*22.50	*4,005.00
10.	Tack Coat	GAL	8	*5.00	*40.00
11.	Sawing Pavement, Full Depth	LF	120	*3.00	*360.00
12.	6" Concrete Sidewalk (Removed & Replaced)	SF	368	*8.50	*3,128.00
13.	Detectable Warning Fields	SF	16	*35.00	*560.00
14.	Utility Line Opening	EA	1	*125.00	*125.00
15.	Remove Existing Storm Sewer Pipe	LF	24	*15.00	*360.00
16.	Removing Storm Inlets	EA	1	*150.00	*150.00
17.	Furnish & Install 15" PVC SDR-35, Storm Sewer	LF	495	*47.00	*23,265.00
18.	Furnish & Install Standard Manhole, Type 1, Storm	VF	5.13	*250.00	*1,282.50
19.	Furnish & Install Type 3 Inlet (2' X 3')	EA	5	*900.00	*4,500.00
20.	Furnish & Install Type "J" Casting (R-1850-A), Storm	EA	1	*400.00	*400.00
21.	Furnish & Install Type "H" Casting (R-3067-R), Diagonal, Storm	EA	5	*575.00	*2,875.00
22.	Furnish & Install Trench Backfill	TON	27	*17.00	*459.00
23.	3" Pulverized Topsoil	SY	487	*7.75	*3,774.25
24.	Seed (#40), Fertilizer, Mulch & Water	SY	487	*2.50	1,217.50
25.	Erosion Mat, Urban Class 1, Type A	SY	487	*1.00	*487.00
TOTAL FOR STORM SEWER					\$ 70,524.25

10/16/20

BID QUANTITIES FOR 2020 STORM SEWER CONSTRUCTION - LINCOLN BLVD ADDED STORM SEWER ***** CITY OF MANITOWOC CONTRACT NO WS-20-1					
ITEM NO.	ITEM DESCRIPTION	UNITS	BID QUANTITY	UNIT PRICE	TOTAL
LINCOLN BLVD (STORM SEWER)					
1.	Mobilisation	LS	1	4242.00	4242.00
2.	Traffic Control	LS	1	3838.00	3838.00
3.	Inlet Protection Type "D"	EA	5	151.50	757.50
4.	Remove & Replace 24" Concrete Curb and Gutter - Type	LF	23	47.47	1091.81
5.	Remove & Replace 30" Concrete Curb and Gutter - Type	LF	114	52.77	6015.78
6.	Remove & Replace 7" Base Course Concrete	SY	178	109.78	19567.44
7.	8" Crushed Aggregate Base Course	SY	178	11.07	1970.46
8.	3/4" Epoxy Coated Tie Bars (Includes Drilling)	EA	88	14.32	1260.16
9.	2" E.M.A., Type 4LF 58-288	SY	178	35.35	6292.30
10.	Tack Coat	GAL	8	25.25	202.00
11.	Sawing Pavement, Full Depth	LF	120	5.05	606.00
12.	6" Concrete Sidewalk (Removed & Replaced)	SF	368	7.91	2910.88
13.	Detectable Warning Fields	SF	16	37.12	593.92
14.	Utility Line Opening	EA	1	1212.00	1212.00
15.	Remove Existing Storm Sewer Pipe	LF	24	6.016	145.44
16.	Removing Storm Inlets	EA	1	252.50	252.50
17.	Furnish & Install 15" PVC SDR-35, Storm Sewer	LF	495	49.13	24319.35
18.	Furnish & Install Standard Manhole, Type 1, Storm	VF	5.19	430.25	2210.26
19.	Furnish & Install Type 3 Inlet (2' X 3')	EA	5	1325.75	6628.75
20.	Furnish & Install Type "J" Casting (R-1550-A), Storm	EA	1	404.00	404.00
21.	Furnish & Install Type "H" Casting (R-3067-R), Diagonal, Storm	EA	5	505.00	2525.00
22.	Furnish & Install French Backfill	TON	27	20.20	545.40
23.	3" Pulverized Topsoil	SY	487	5.39	2624.93
24.	Seed (#40), Fertilizer, Mulch & Water	SY	487	4.04	1967.48
25.	Erosion Mat, Urban Class 1, Type A	SY	487	2.02	983.74
TOTAL FOR STORM SEWER				85,967.10	

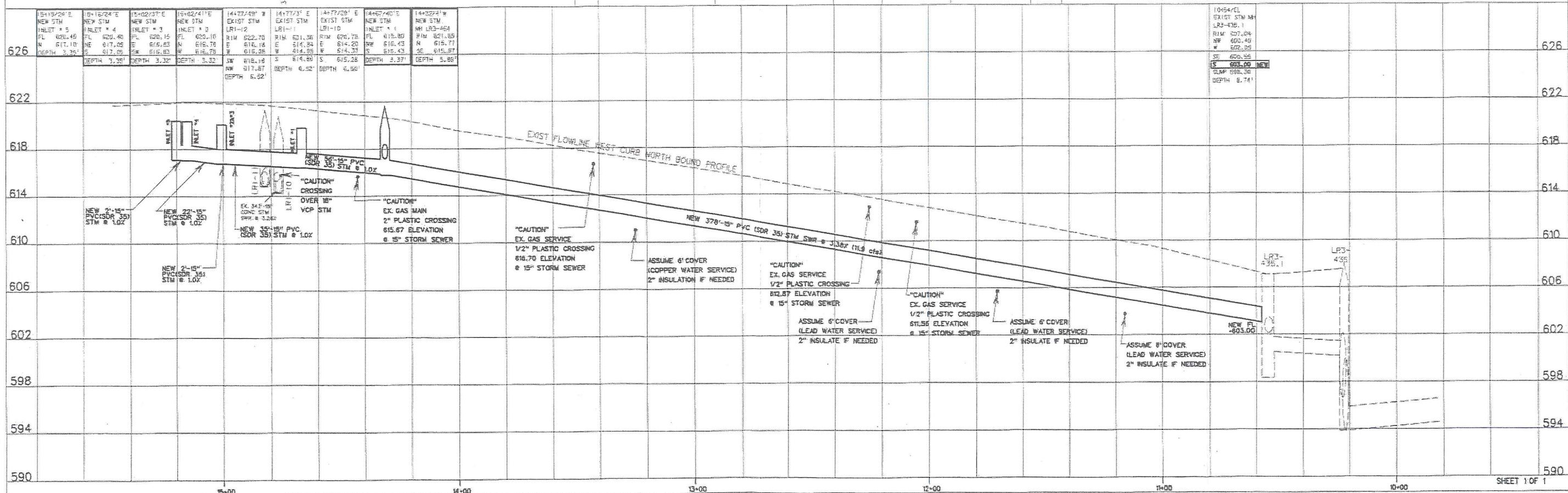
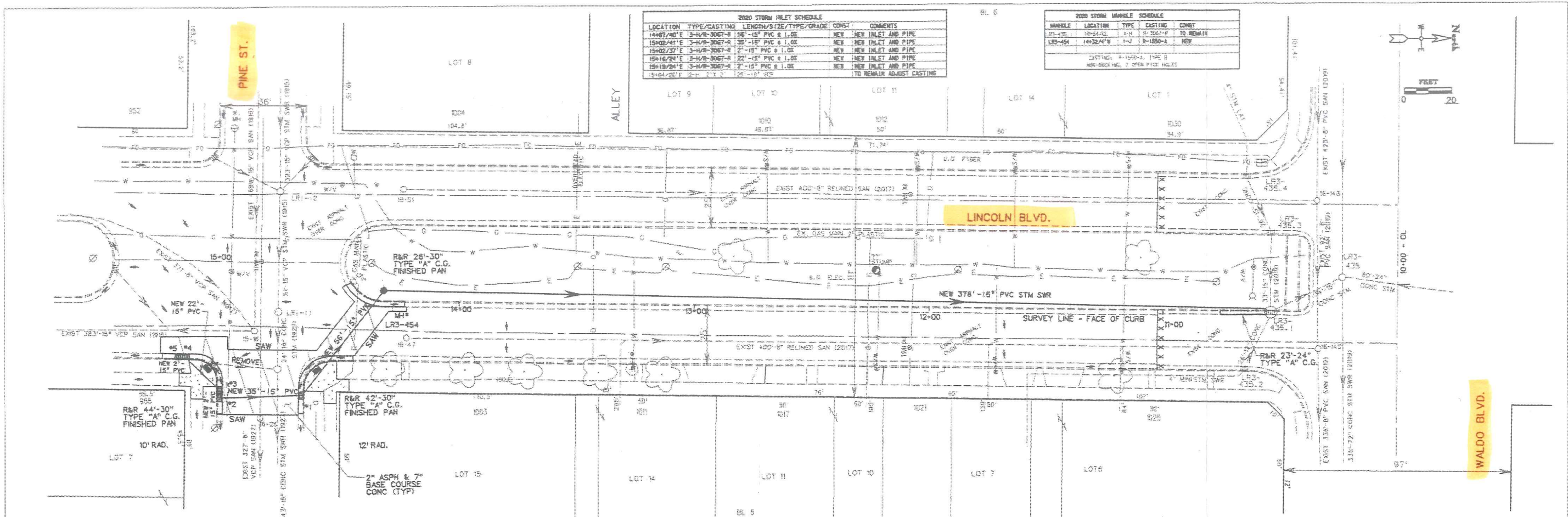
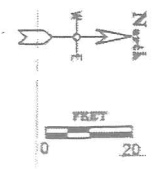
From DeGroot Inc

10-16-2020


Pres

2020 STORM INLET SCHEDULE					
LOCATION	TYPE/CASTING	LENGTH/SIZE/TYP/GRADE	CONST	COMMENTS	
14487/240'E	3'-H/R-3067-R	15'-15" PVC @ 1.0%	NEW	NEW INLET AND PIPE	
15402/44'E	3'-H/R-3067-R	15'-15" PVC @ 1.0%	NEW	NEW INLET AND PIPE	
15402/37'E	3'-H/R-3067-R	2'-15" PVC @ 1.0%	NEW	NEW INLET AND PIPE	
15416/24'E	3'-H/R-3067-R	22'-15" PVC @ 1.0%	NEW	NEW INLET AND PIPE	
15416/24'E	3'-H/R-3067-R	2'-15" PVC @ 1.0%	NEW	NEW INLET AND PIPE	
14484/25'E	3'-H/R-3067-R	15'-15" PVC	NEW	TO REMAIN ADJUST CASTING	

2020 STORM MANHOLE SCHEDULE					
MANHOLE	LOCATION	TYPE	CASTING	COMMENTS	
LP3-435.1	14-32/4'E	1-10	3'-3067-R	TO REMAIN	
LR3-454	14-32/4'E	1-2	3'-1500-A	NEW	



DRAWN BY: [Name]
 APPROVED BY: [Name]
 X-SEC. AND: [Name]
 LEVELS: [List of elevations]

City of Monitewa, Wisconsin
 Engineering Department

LINCOLN BLVD. - WALDO BLVD TO PINE STREET
 STORM SEWERS 20-09-28