



CITY OF MANITOWOC
WISCONSIN, USA
www.manitowoc.org



February 20, 2020

To: Mayor and Common Council

From: Paul Braun, City Planner

Subject: **PC 9-2020: Ertman: Request to Purchase City Owned Property, Menasha Avenue and Waldo Boulevard.**

At the February 19, 2020 meeting of the Manitowoc City Plan Commission, the Commission recommended to the Common Council the following action:

Approve the request to sell a portion of the former Menasha Avenue right-of-way and instruct the City Attorney's Office to finalize any and all documents, agreements and costs necessary to complete the transaction. The transaction is also subject to a utility easement being recorded for the existing utilities in the subject property.

Granicus #: 20-0181
Attachments: Map

MANTOWOC

N. 12TH STREET

1108

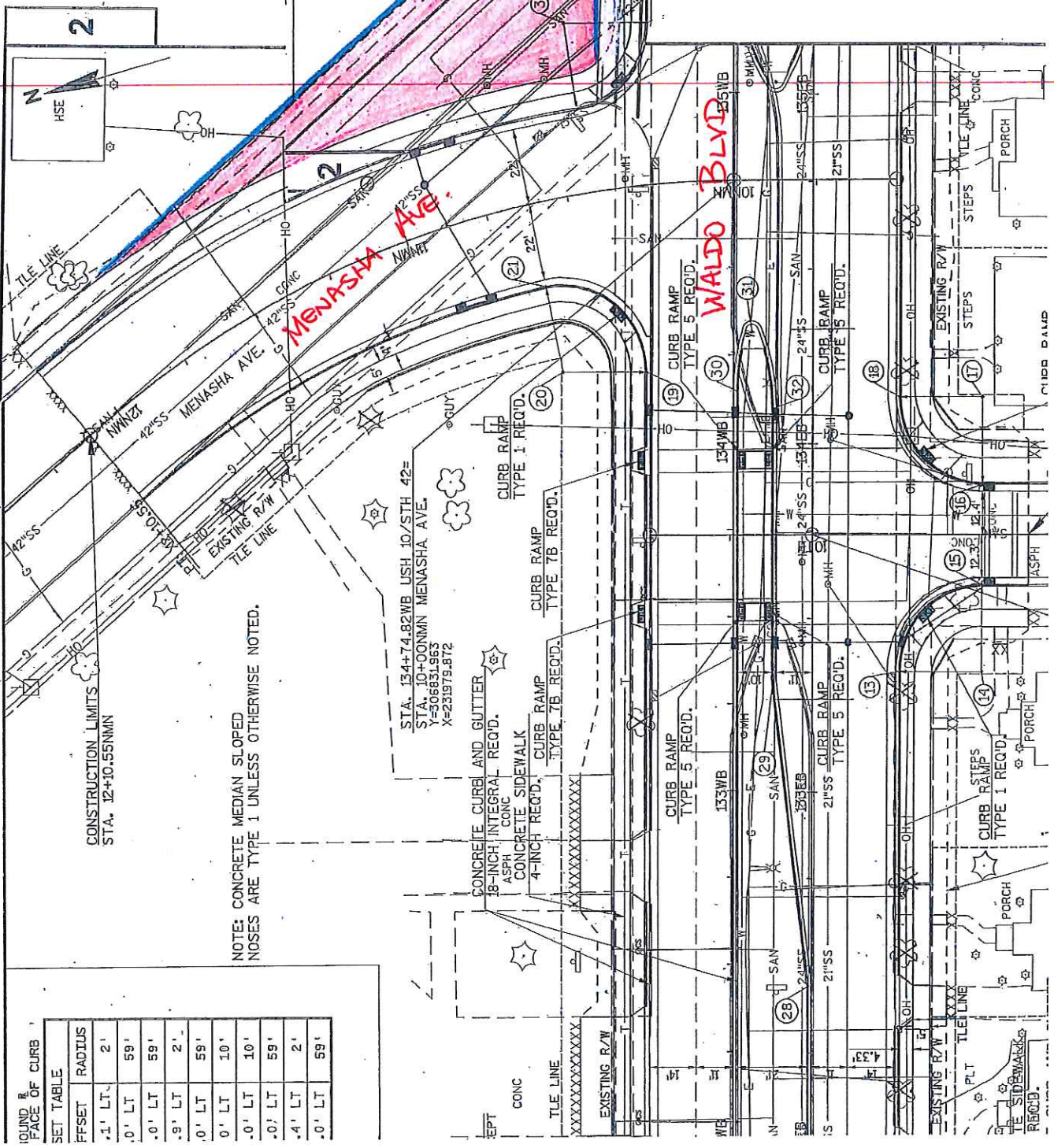
TRAVIS
ERTMAN

1104

GRS
PHONE
SANITARY

WALDO BLYD

Menasha Ave.



BOUND OF CURB
FACE OF CURB

SET TABLE

FFSET	RADIUS
.1' LT.	2'
.0' LT	59'
.0' LT	59'
.9' LT	2'
.0' LT	59'
.0' LT	10'
.0' LT	10'
.0' LT	59'
.4' LT	2'
.0' LT	59'

NOTE: CONCRETE MEDIAN SLOPED
NOSES ARE TYPE 1 UNLESS OTHERWISE NOTED.

STA. 134+74.82WB USH 10/STH 42=
STA. 10+00NMN MENASHA AVE.
Y=506831.953
X=231979.872

CONCRETE CURB AND GUTTER
8-INCH INTEGRAL REQ'D.
ASPH CONC
CONCRETE SIDEWALK
4-INCH REQ'D.

XXXXXXXXXXXXXX
EXISTING R/W

CURB RAMP
TYPE 5 REQ'D.

CURB RAMP
TYPE 5 REQ'D.

CURB RAMP
TYPE 5 REQ'D.

CURB RAMP
TYPE 5 REQ'D.

CURB RAMP
TYPE 5 REQ'D.

CURB RAMP
TYPE 5 REQ'D.

CURB RAMP
TYPE 5 REQ'D.

CURB RAMP
TYPE 5 REQ'D.

CURB RAMP
TYPE 5 REQ'D.

CURB RAMP
TYPE 5 REQ'D.

CURB RAMP
TYPE 5 REQ'D.

CURB RAMP
TYPE 5 REQ'D.

Ertman Request



2/13/2020, 8:17:20 AM

- Lot Dimension Leaders
- ManitowocParcels.DBO.CorporateLimits
- <all other values>
- Corporate Limits City_of_Manitowoc.sid
- Red: Band_1
- Green: Band_2
- Water

