

CITY OF MANITOWOC FIRE & RESCUE DEPARTMENT

MARCH 2025 MONTHLY METRICS



INCIDENTS

481



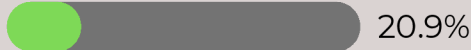
423



58

BUDGET

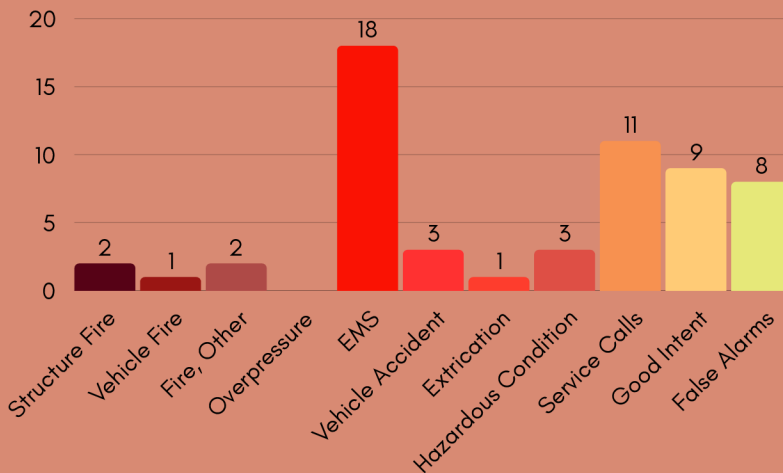
Monthly Expenses: \$544,479.29



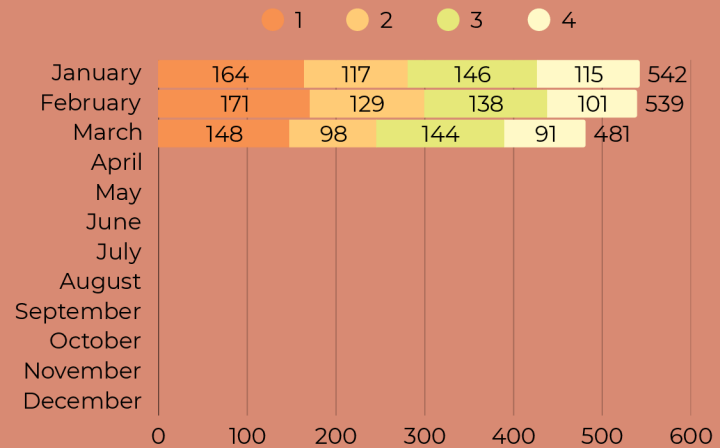
Leave/Pay Summary - YTD

	A	B	C
VAC/HOL/Funeral/ED	1,365.50	1,540.00	1,312.00
Report/Call-Out	18.50	30.00	2.00
Sick Leave	346.00	793.00	1,629.25
Overtime	370.60	264.59	894.50

FIRE INCIDENT TYPES



INCIDENTS BY STATION

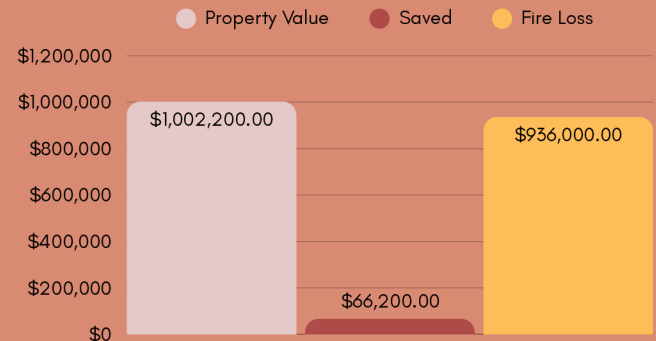


Fire Prevention	Month	YTD
Plan Review	3	8
Fire Inspections	114	224
Violations	27	65
Violations Corrected	8	42
Public Education Events	7	13
Adult Participants	94	161
Children Participants	117	278
Fire Suppress Systems	2	5

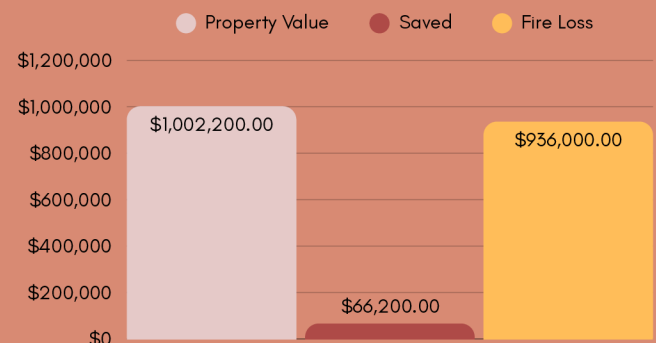
Professional Development	Hours	Attendees
Administration & Organization	81.50	13
Apparatus Operation	172.25	34
EMS	19.75	25
Fire Suppression & Tactics	544.57	47
Technical Rescue	200.75	39
Officer Development	73.00	3

FIRE LOSS DATA

CURRENT MONTH



YEAR TO DATE



SIMULTANEOUS CALLS

23.17%

5.17%



98.00



3

AVERAGE RUN TIME

41.04 MINS

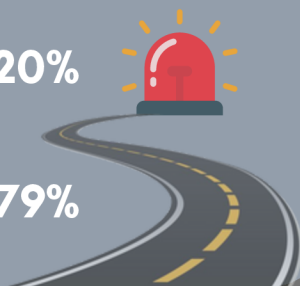
TURNOUT TIME
< 2 MINUTES

92.20%



TRAVEL TIME
< 5 MINUTES

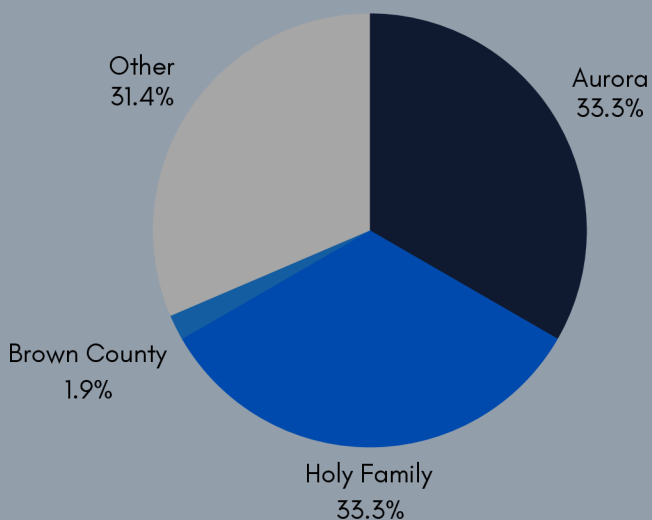
68.79%



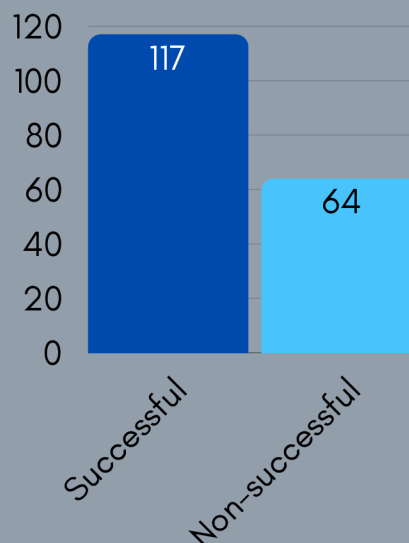
Top 10 Incidents

Top 10 Incidents	Month	% of Total Calls
Falls	91	21.51%
Sick Person	74	17.49%
Breathing Problem	40	9.46%
Unconscious/Fainting/ Near-Fainting	25	5.91%
Chest Pain (Non-Traumatic)	19	4.49%
Stroke/CVA	14	3.31%
Psychiatric Problem/Abnormal Behavior/ Suicide Attempt	14	3.31%
Abdominal Pain/Problems	13	3.07%
Unknown Problem/Person Down	12	2.84%
Heat Problems/AICD	11	2.60%

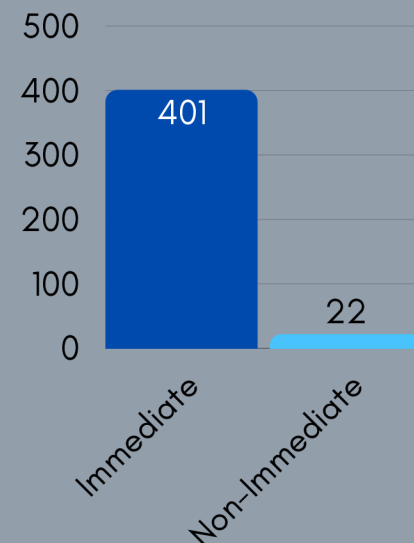
TRANSPORT DESTINATION



IV STARTS



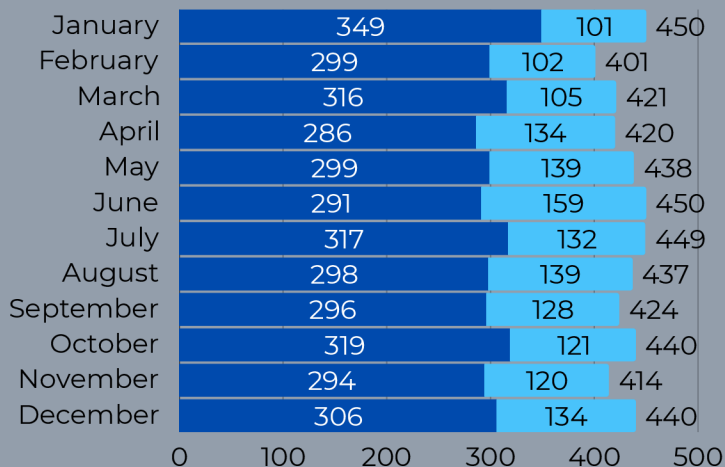
AMBULANCE RESPONSE



EMS TRANSPORTS VS TOTAL CALLS

PRIOR YEAR

● Transports ● Other



CURRENT YEAR

● Transports ● Other

