



CITY OF MANITOWOC  
WISCONSIN, USA  
[www.manitowoc.org](http://www.manitowoc.org)



May 27, 2021

To: Mayor and Common Council

From: Paul Braun, City Planner

**Subject: PC 19-2021: Budnik: Request for a Variance from the Official Map, Future Street, South of Michigan Avenue and County JJ intersection, Parcel # 010-022-002-000.00**

At the May 26, 2021 meeting of the Manitowoc City Plan Commission, pursuant to MMC 22.010(2) the Commission *“Wherever a strict compliance with the layout as shown on the Official Map would work an unnecessary hardship upon an owner, the City Plan Commission may permit a variance from the exact design shown on the Official Map”*.

The Commission is making the Council aware that the Plan Commission:

***Approved the Official Map Variance to relocate the future right-of-way as shown on the attached Map located in the NW ¼ of the NE ¼ of Section 22, T.19N, R.23E, Town of Manitowoc Rapids, Manitowoc County, Wisconsin.***

Granicus #: 21-0501  
Attachments: Map

LOT 1.1

NEUSER DRIVE

TR 1

NE 1/4 SEC 15,  
T19N, R23E

WALDO BLVD.

Section Line

MICHIGAN AVE.

Official Map Existing

Official Map Proposed

NE 1/4 SEC 22,  
T19N, R23E

TOWN OF  
MANITOWOC RAPIDS

I-43



DISCLAIMER: Maps and associated data are believed to be accurate, but are not warranted. This information is not intended for legal, survey, or other related uses. Please obtain the original recorded documents for legal or survey information.

Prepared by City of Manitowoc  
Community Development Department  
www.manitowoc.org  
Map Plotted: 01/16/2019  
O:\Planning\PC Plan Commission\PC\_Official Map Amendment\2021\PC 19-2021 Budnik\_Official Map Variance\Maps\PC 19-2021 B&W.mxd




### Official Map Variance City of Manitowoc

0 125 250 500

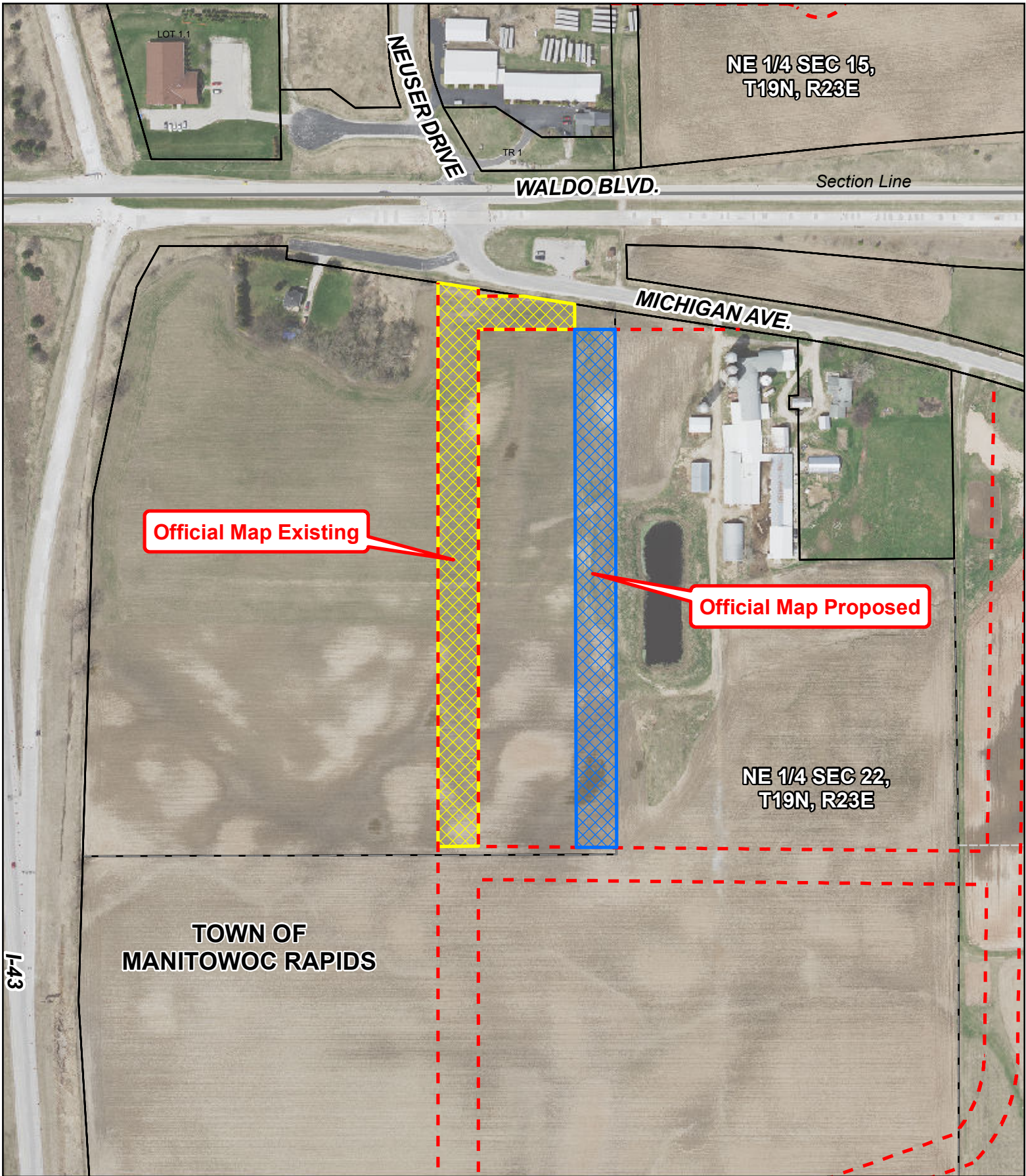


Feet

#### Legend

-  Official Map Proposed
-  Official Map Existing
-  Official Map Street

PC 19-2021



**Official Map Existing**

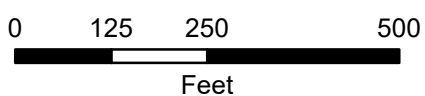
**Official Map Proposed**




**TOWN OF  
MANITOWOC RAPIDS**

**NE 1/4 SEC 22,  
T19N, R23E**

**NE 1/4 SEC 15,  
T19N, R23E**

**Official Map Variance  
City of Manitowoc**



- Legend**
-  Official Map Proposed
  -  Official Map Existing
  -  Official Map Street



DISCLAIMER: Maps and associated data are believed to be accurate, but are not warranted. This information is not intended for legal, survey, or other related uses. Please obtain the original recorded documents for legal or survey information.

Prepared by City of Manitowoc  
Community Development Department  
www.manitowoc.org  
Map Plotted: 01/16/2019

O:\Planning\PC Plan Commission\PC\_Official Map Amendment\2021\PC 19-2021 Budnik\_Official Map Variance\Maps\PC 19-2021.mxd

PC 19-2021