



CITY OF MANITOWOC

WISCONSIN, USA

www.manitowoc.org

July 29, 2021

To: Mayor and Common Council

From: Paul Braun, City Planner

Subject: PC 1-2021: Northland Associates LLC; Release of Easement, Northwest Corner of Lilac Drive and Memorial Drive, Tracts 1, 2, & 3 CSM Volume 6, Page 555.

At the July 28, 2021 meeting of the Manitowoc City Plan Commission, the Commission recommended to the Common Council the following action:

Approve the request for the Release of Easement after all the utilities and City Engineering have approved the easement release.

Granicus #: 21-0702

*Community Development Department • Phone (920) 686-6930
CITY HALL • 900 Quay Street • Manitowoc, WI 54220-4543 • Fax (920) 686-6939 • www.manitowoc.org*

SURVEY OF EXISTING LOT RECORDED IN VOLUME 549, PAGE 688 OF RECORDS LOCATED IN GOVT. LOT 2, SW 1/4 OF THE NE 1/4, SECTION 16, T.19 N., R.24 E., CITY OF MANITOWOC, MANITOWOC COUNTY, WISCONSIN 555
affidavit vol. 562 bk. pg. 588

511879

NW CORNER
 SW 1/4, NE 1/4
 SEC. 16, T.19 N., R.24 E.
 (EXISTING 1" IRON PIPE)



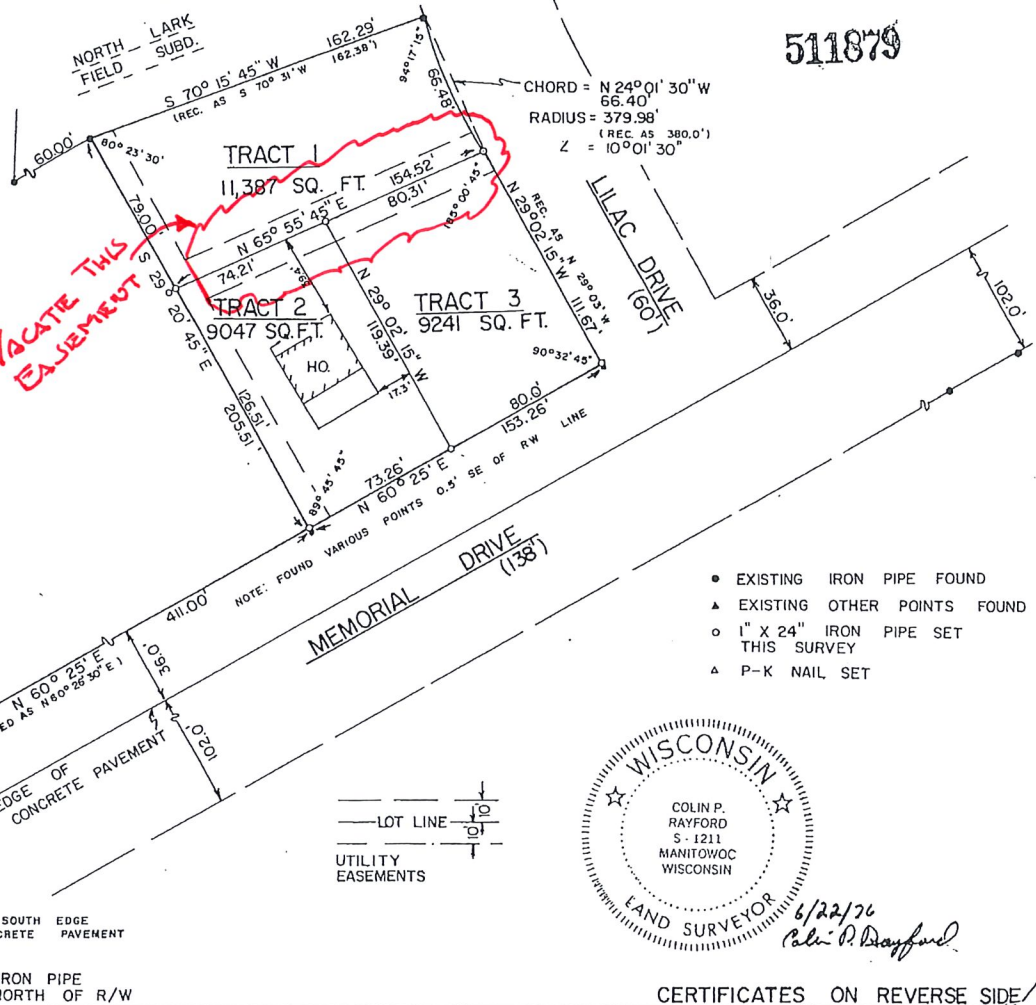
W — E
 SCALE 1" = 60'

BEARINGS ARE REFERENCED TO THE N-S 1/4 LINE OF SECTION 16 T.19 N., R.24 E. RECORDED AS S 0° 03' 15" W

REGISTRAR'S OFFICE
 Manitowoc County, Wis.
 RECEIVED FOR RECORD

1976 JUL 19 AM 9 40

Vol. 6, *CSM* on page 555
Robert Brandt
 Registrar



1610 Cherry Road
 Manitowoc, Wisconsin 54220

