

Sonja Birr

From: Paul Steinbrecher <paul@smimanitowoc.comcastbiz.net>
Sent: Friday, July 01, 2016 11:32 AM
To: Sonja Birr
Cc: Mike Pappathopoulos
Subject: Driveway Width Variance - Public Infrastructure Committee
Attachments: HAMANN_DRIVE_VARIANCE.pdf

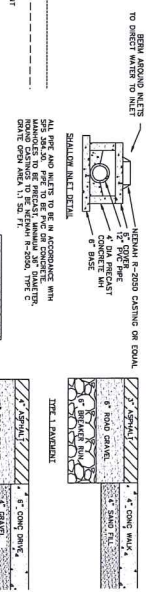
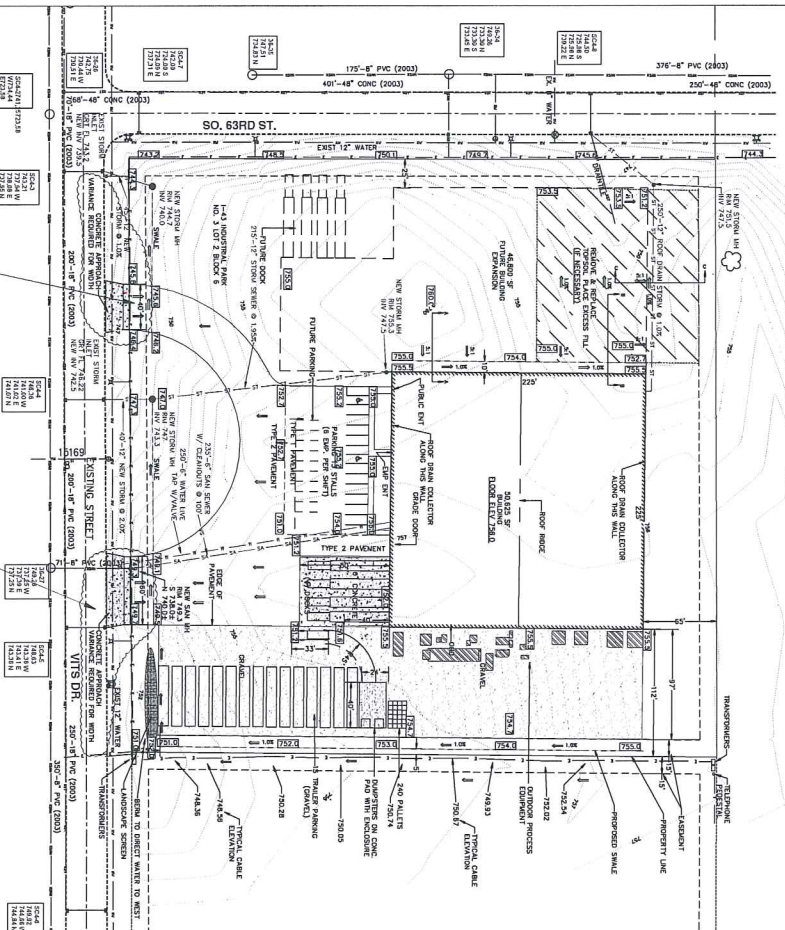
To the Public Infrastructure Committee

On behalf of Hamann Construction we are requesting variances for the width of 2 driveways on Vits Drive between So. 59th Street and So. 63rd Street. The driveways are for a new manufacturing plant in the Industrial Park. The east drive is proposed to be 60 feet wide and the west driveway is proposed to be 40 feet wide. The addition driveway width is required for semi traffic.

Thank you for your consideration.

Paul M. Steinbrecher
SMI
102 Revere Drive
Manitowoc wi 54220
920-684-5583 ext. 102 Cell 920-374-0379
www.smimanitowoc.com

VARIANCE REQUEST FOR DRIVEWAY WIDTH
60' ON THE EAST DRIVE AND 40' ON THE WEST DRIVE



SEE AROUND SITES TO DETERMINE NECESSARY PERMITS
TO DIRECT WATER TO NEUTRALIZATION BASIN

SEE 2010 IBC SECTION 1003.5 FOR PERMITS
FOR CONCRETE WALLS
AND ROOF DRAIN COLLECTORS
AND DOWNSPOUTS

SEE 2010 IBC SECTION 1003.5 FOR PERMITS
FOR CONCRETE WALLS
AND ROOF DRAIN COLLECTORS
AND DOWNSPOUTS

SEE 2010 IBC SECTION 1003.5 FOR PERMITS
FOR CONCRETE WALLS
AND ROOF DRAIN COLLECTORS
AND DOWNSPOUTS

SEE 2010 IBC SECTION 1003.5 FOR PERMITS
FOR CONCRETE WALLS
AND ROOF DRAIN COLLECTORS
AND DOWNSPOUTS

SEE 2010 IBC SECTION 1003.5 FOR PERMITS
FOR CONCRETE WALLS
AND ROOF DRAIN COLLECTORS
AND DOWNSPOUTS

GENERAL NOTES:

1. ALL DRIVEWAY APPROXIMATIONS ARE TO BE CONCRETE
- 2. SEE SPECIFICATIONS FOR ALL MATERIALS
- 3. SEE SPECIFICATIONS FOR ALL MATERIALS
- 4. SEE SPECIFICATIONS FOR ALL MATERIALS
- 5. SEE SPECIFICATIONS FOR ALL MATERIALS
- 6. SEE SPECIFICATIONS FOR ALL MATERIALS
- 7. SEE SPECIFICATIONS FOR ALL MATERIALS
- 8. SEE SPECIFICATIONS FOR ALL MATERIALS
- 9. SEE SPECIFICATIONS FOR ALL MATERIALS
- 10. SEE SPECIFICATIONS FOR ALL MATERIALS
- 11. SEE SPECIFICATIONS FOR ALL MATERIALS
- 12. SEE SPECIFICATIONS FOR ALL MATERIALS
- 13. SEE SPECIFICATIONS FOR ALL MATERIALS
- 14. SEE SPECIFICATIONS FOR ALL MATERIALS
- 15. SEE SPECIFICATIONS FOR ALL MATERIALS
- 16. SEE SPECIFICATIONS FOR ALL MATERIALS
- 17. SEE SPECIFICATIONS FOR ALL MATERIALS
- 18. SEE SPECIFICATIONS FOR ALL MATERIALS
- 19. SEE SPECIFICATIONS FOR ALL MATERIALS
- 20. SEE SPECIFICATIONS FOR ALL MATERIALS

SECTION A-A

SECTION B-B

SECTION C-C

SECTION D-D

FOUNDATION

CONCRETE

FOUNDATION

CONCRETE

FOUNDATION

CONCRETE

FOUNDATION

CONCRETE

FOUNDATION

CONCRETE

FOUNDATION

CONCRETE

FOUNDATION

CONCRETE

FOUNDATION

CONCRETE

FOUNDATION

CONCRETE

FOUNDATION

CONCRETE

FOUNDATION

CONCRETE

FOUNDATION

CONCRETE

FOUNDATION

CONCRETE

FOUNDATION

CONCRETE

FOUNDATION

CONCRETE

FOUNDATION

CONCRETE

FOUNDATION

CONCRETE

FOUNDATION

CONCRETE

FOUNDATION

CONCRETE

FOUNDATION

CONCRETE

FOUNDATION

CONCRETE

FOUNDATION

CONCRETE

FOUNDATION

CONCRETE

FOUNDATION

CONCRETE

FOUNDATION

CONCRETE

FOUNDATION

CONCRETE

FOUNDATION

CONCRETE

FOUNDATION

CONCRETE

FOUNDATION

CONCRETE

FOUNDATION

CONCRETE

FOUNDATION

CONCRETE

FOUNDATION

CONCRETE

FOUNDATION

CONCRETE

FOUNDATION

CONCRETE

FOUNDATION

CONCRETE

FOUNDATION

CONCRETE

FOUNDATION

CONCRETE

FOUNDATION

CONCRETE

FOUNDATION

CONCRETE

FOUNDATION

CONCRETE

FOUNDATION

CONCRETE

FOUNDATION

CONCRETE

FOUNDATION

CONCRETE

FOUNDATION

CONCRETE

NO.	DATE	BY
1	6/21/16	MS
2	6/22/16	MS
3	6/22/16	MS
4	6/22/16	MS
5	7/1/16	RS

SCALE: 1" = 20'

CLIENT: **HAMANN**
CONSTRUCTION COMPANY

DATE: 5/27/16

APPROVED BY: [Signature]

SCALE: 1" = 20'

CLIENT: **HAMANN**
CONSTRUCTION COMPANY

DATE: 5/27/16

APPROVED BY: [Signature]

SCALE: 1" = 20'

CLIENT: **HAMANN**
CONSTRUCTION COMPANY

DATE: 5/27/16

APPROVED BY: [Signature]

SCALE: 1" = 20'

SMI CIVIL AND STRUCTURAL ENGINEERS

102 REVERE DRIVE
MANITOWIC, WI 53220-3147
920-684-5583 www.smiinc.com

HAMANN
CONSTRUCTION COMPANY

DATE: 5/27/16

APPROVED BY: [Signature]

SCALE: 1" = 20'

CLIENT: **HAMANN**
CONSTRUCTION COMPANY

DATE: 5/27/16

APPROVED BY: [Signature]

SCALE: 1" = 20'

CLIENT: **HAMANN**
CONSTRUCTION COMPANY

DATE: 5/27/16

APPROVED BY: [Signature]

SCALE: 1" = 20'

NO.	DATE	BY
1	6/21/16	MS
2	6/22/16	MS
3	6/22/16	MS
4	6/22/16	MS
5	7/1/16	RS

SCALE: 1" = 20'

CLIENT: **HAMANN**
CONSTRUCTION COMPANY

DATE: 5/27/16

APPROVED BY: [Signature]

SCALE: 1" = 20'

CLIENT: **HAMANN**
CONSTRUCTION COMPANY

DATE: 5/27/16

APPROVED BY: [Signature]

SCALE: 1" = 20'

CLIENT: **HAMANN**
CONSTRUCTION COMPANY

DATE: 5/27/16

APPROVED BY: [Signature]

SCALE: 1" = 20'