



# CITY OF MANITOWOC

WISCONSIN, USA

[www.manitowoc.org](http://www.manitowoc.org)

October 28, 2021

To: Mayor and Common Council

From: Paul Braun, City Planner

**Subject: PC 41-2021: Fager; Rezone from R-1 Residential – Agricultural District to R-4 Single & Two Family Residential District related to a Petition for Direct Annexation – 2815 S. 15<sup>th</sup> Street**

At the October 27, 2021 meeting of the Manitowoc City Plan Commission, the Commission recommended to the Common Council the following action:

***Approve the Zoning Classification of R-4 Single and Two Family Residential.***

Applicant:  
Bryan Fager  
2815 S. 15<sup>th</sup> Street  
Manitowoc, WI 54220

Granicus #: 21-1033  
Attachments: Map & Ordinance

City of Manitowoc

R-3

SE 1/4  
SEC 31

TR E 19N R24E

606 1602 1512 1510 1502 1422 1416 1410 2640

TR 1 1318 TR 2 1312 TR 3 1306 TR 4

S 14TH ST

Section Line

VIEBAHN ST

1605 1515 1501  
TR G-1 TR G

1425 1421 1413 1403  
TRA TR C R-4

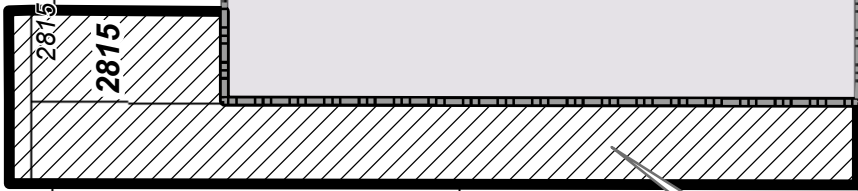
1305  
TR 2 TR 1

13 2732 2806

S 15TH ST

2709 TR 1 2704  
2721 TR 2 TR 3

City Limit



Proposed  
Rezone to R-4

NE 1/4  
SEC 06  
T18N R24E

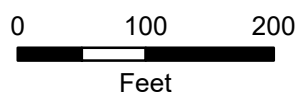
2812 2820 2826 2834 2908 912  
2815 2815  
2823 TR 3  
TR LOT 15 TR 2A

Town of  
Manitowoc


R-4

Proposed Rezone Property from R-1 Residential-Agricultural  
to R-4, Single- and Two-Family District

PC 40-2021  
PC 41-2021  
2815 S. 15th St.

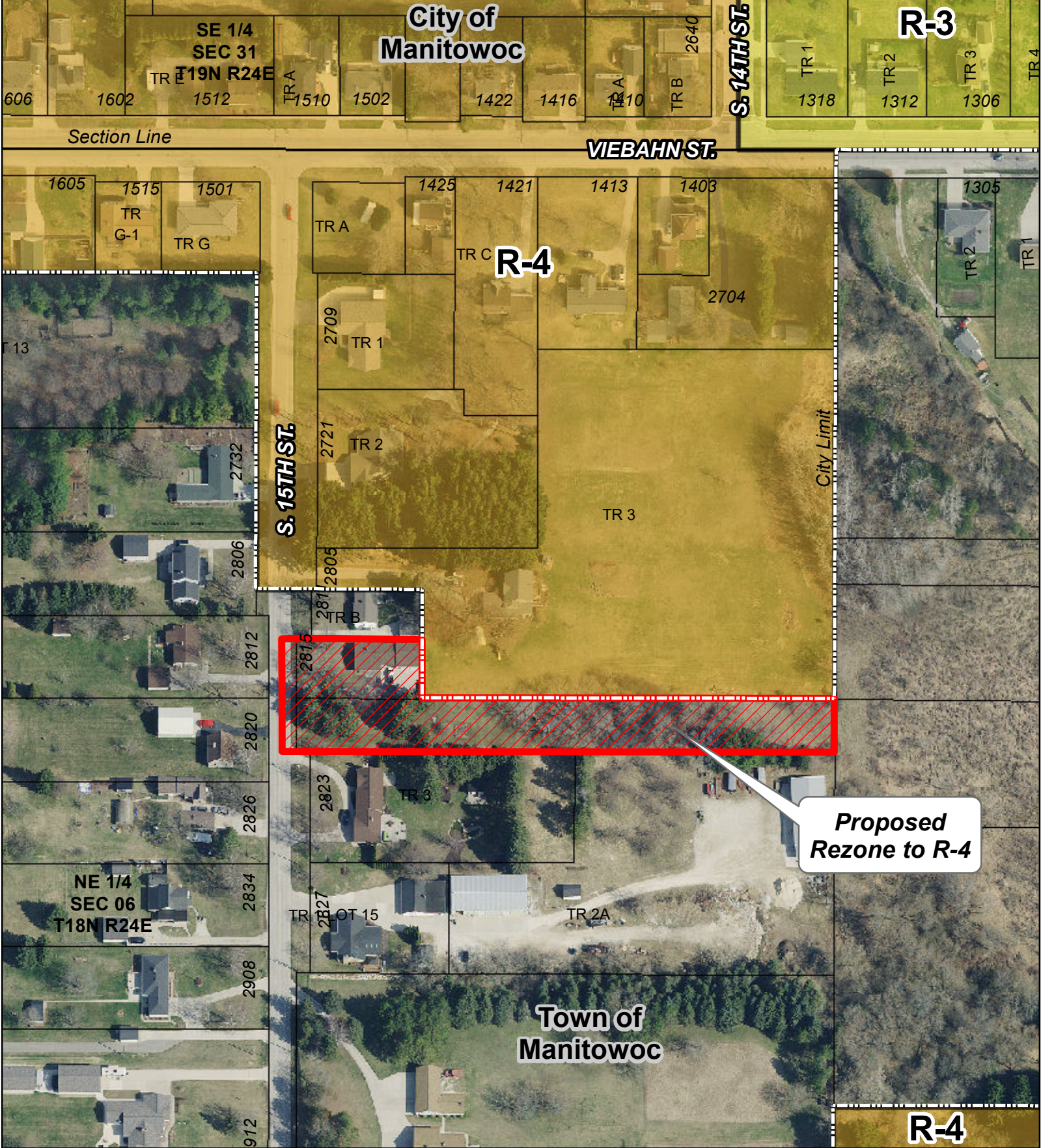


**Legend**

 Proposed Rezone

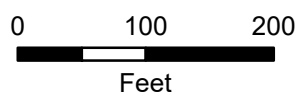
DISCLAIMER: Maps and associated data are believed to be accurate, but are not warranted. This information is not intended for legal, survey, or other related uses. Please obtain the original recorded documents for legal or survey information.

Prepared by City of Manitowoc  
Community Development Department  
www.manitowoc.org  
Map Plotted: 10/18/2021  
O:\Planning\PC Plan Commission\PC\_Annexation\2021\PC 40-2021 Fager 2815 S 15th St\Maps\PC 40-2021 Rezone B&W.mxd



**Proposed Rezone Property from R-1 Residential-Agricultural to R-4, Single- and Two-Family District**

PC 40-2021  
 PC 41-2021  
 2815 S. 15th St.




DISCLAIMER: Maps and associated data are believed to be accurate, but are not warranted. This information is not intended for legal, survey, or other related uses. Please obtain the original recorded documents for legal or survey information.

Prepared by City of Manitowoc  
 Community Development Department  
 www.manitowoc.org  
 Map Plotted: 10/18/2021

O:\Planning\PC Plan Commission\PC\_Annexation\2021\PC 40-2021 Fager 2815 S 15th St\Maps\PC 40-2021 Rezone.mxd

**Legend**

 **Proposed Rezone**