



CITY OF MANITOWOC

WISCONSIN, USA

www.manitowoc.org

October 28, 2021

To: Mayor and Common Council

From: Paul Braun, City Planner

Subject: PC 40-2021: Fager; Petition for Direct Annexation pursuant to §66.0217(2) from the Town of Manitowoc, South 15th Street.

At the October 27, 2021 meeting of the Manitowoc City Plan Commission, the Commission recommended to the Common Council the following action:

Approve the acceptance of the Annexation Petition for the S. 15th Street #2 annexation area.

Applicant:
Bryan Fager
2815 S. 15th Street
Manitowoc, WI 54220

Granicus #: 21-1035
Attachments: Map, Ordinance & Resolution

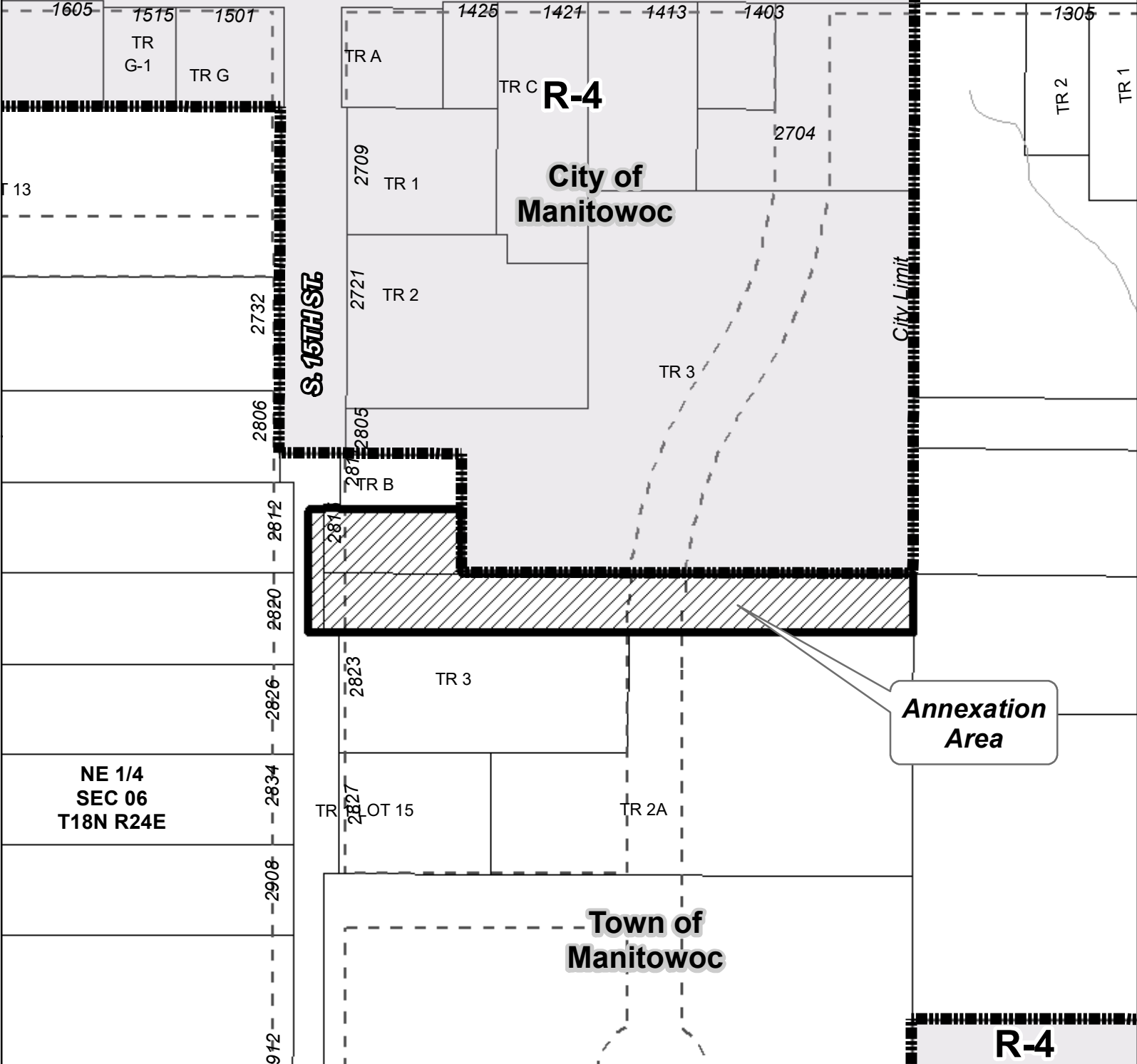
Aldermanic District #7

R-3

Ward 37

Section Line

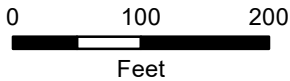
VIEBAHN ST.



Annexation Area

**Town of
Manitowoc**

R-4



S. 15th St. #2

City of Manitowoc, WI

Aldermanic District #7

Ward 37

Population: 2

PC 40-2021
2815 S. 15th St.

Legend

- Annexation Area
- Official Map Street
- Corporate Limits

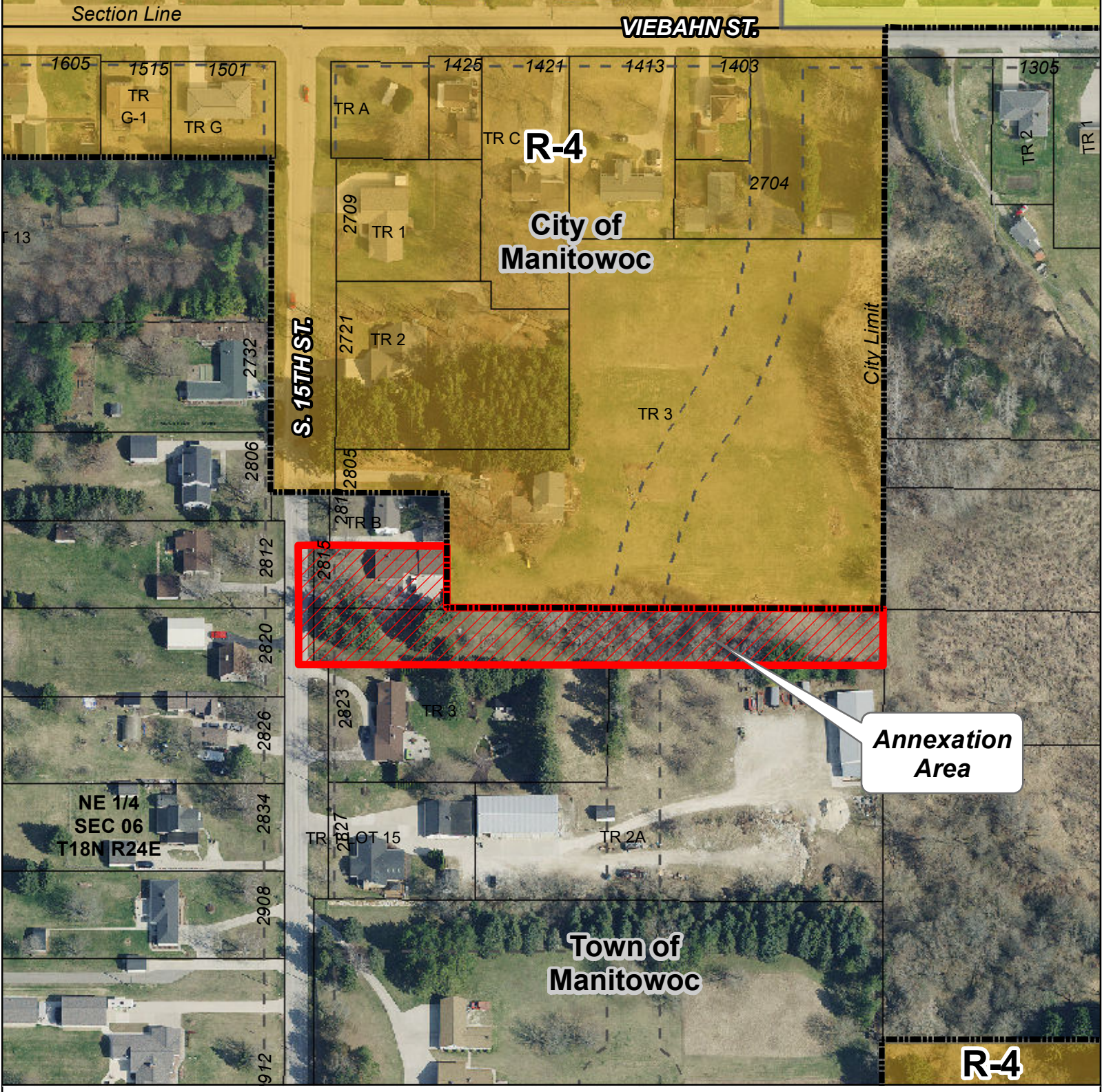
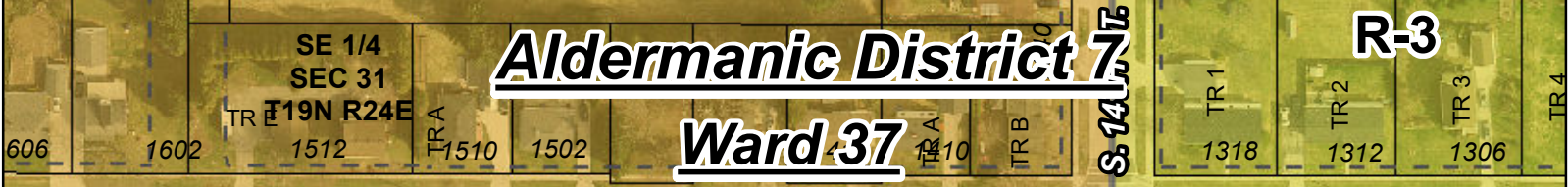
DISCLAIMER: Maps and associated data are believed to be accurate, but are not warranted. This information is not intended for legal, survey, or other related uses. Please obtain the original recorded documents for legal or survey information.

Prepared by City of Manitowoc
Community Development Department
www.manitowoc.org
Map Plotted: 10/18/2021
O:\Planning\PC Plan Commission\PC_Annexation\2021\PC 40-2021 Fager 2815 S 15th St\Maps\PC 40-2021 Annexation B&W.mxd

Aldermanic District 7

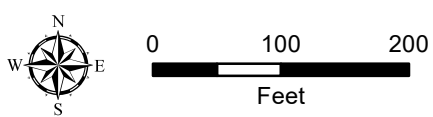
R-3

Ward 37



Town of Manitowoc




R-4



S. 15th St. #2
 City of Manitowoc, WI
Aldermanic District #7
Ward 37
Population: 2

PC 40-2021
 2815 S. 15th St.

Legend

-  Annexation Area
-  Official Map Street
-  Corporate Limits

DISCLAIMER: Maps and associated data are believed to be accurate, but are not warranted. This information is not intended for legal, survey, or other related uses. Please obtain the original recorded documents for legal or survey information.

Prepared by City of Manitowoc
 Community Development Department
 www.manitowoc.org
 Map Plotted: 10/18/2021
 O:\Planning\PC Plan Commission\PC_Annexation\2021\PC 40-2021 Fager 2815 S 15th St\Maps\PC 40-2021 Annexation.mxd