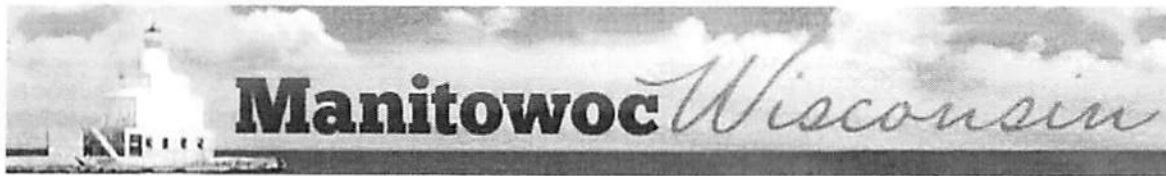


Capital Project Request Form



Request Type:

Department: Date:

Title of Request:

Department Priority

Linked to another project?
☐ Yes
☒ No

Project Request is: ☐ New
☒ Replacement
☐ Modification

Estimated Useful Life:

This is a limited field, please attach documents for more detail.

Description:

Basis of Cost: ☒ Quote ☐ Bid ☐ Estimate
Total Cost

Revenue (if any) Net Cost

Will there be additional costs in future years to complete this project?

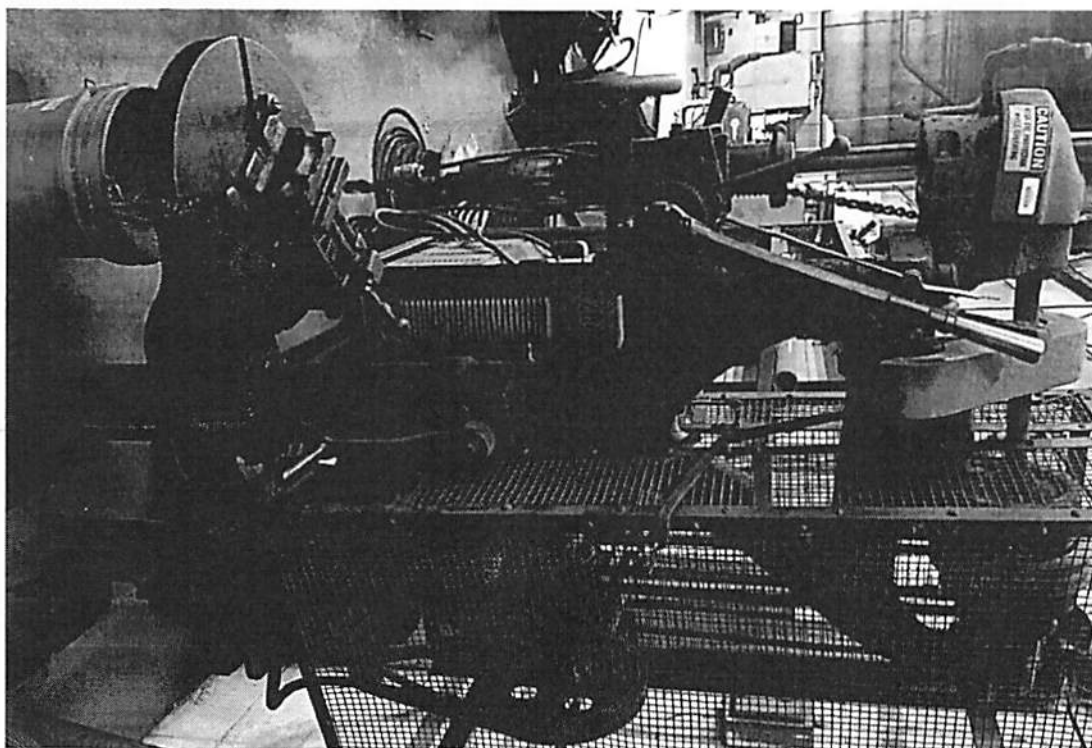
select one: ☐ Yes ☒ No
If yes, amount?

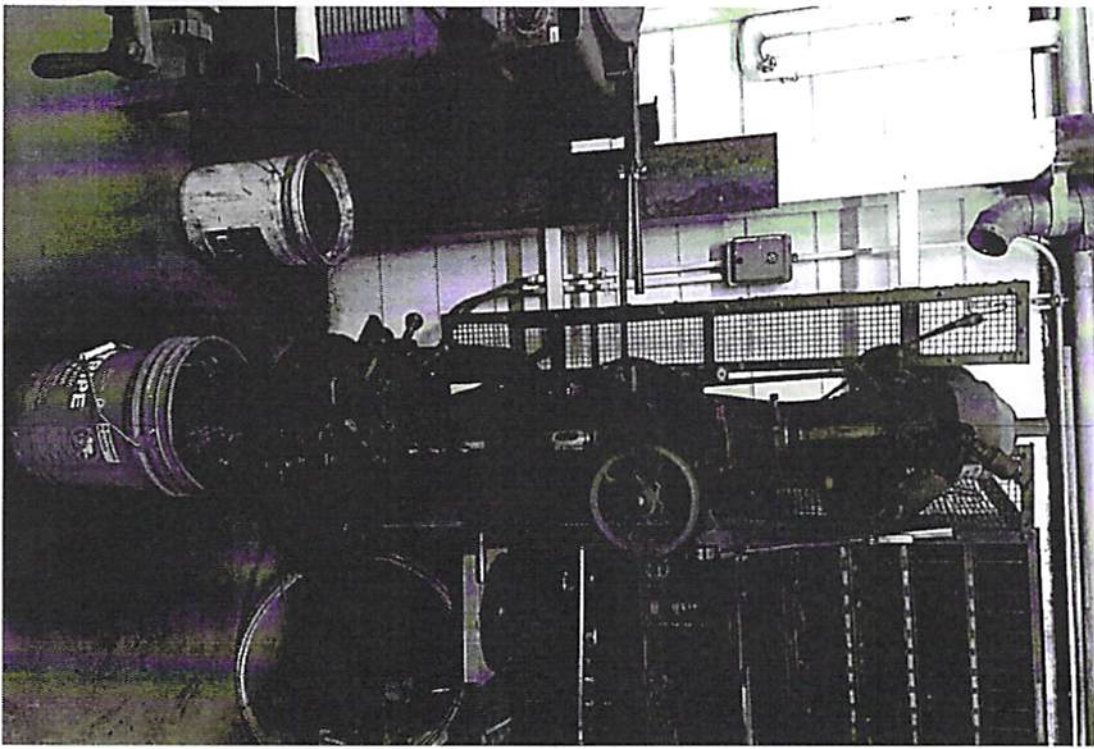
Finance Dept: Account Sent to Dept: ☐

Action:











Quote

00096132



Page 1

1625 Dufek Drive
PO Box 531
Manitowoc, WI 54221-0531
Phone: (920) 684-4990
Fax: (920) 684-3944
Email: sales@baileigh.com
Website: www.baileigh.com

BILL TO:

CITY OF MANITOWOC
JJ WALVOORD
DEPARTMENT OF PUBLIC INFRASTRUCTURE
2655 S 35TH ST
MANITOWOC, WI 54220-5965

SHIP TO:

CITY OF MANITOWOC
JJ WALVOORD
DEPARTMENT OF PUBLIC INFRASTRUCTURE
2655 S 35TH ST
MANITOWOC, WI 54220-5965

Notes

Please inspect your shipment thoroughly PRIOR TO SIGNING FOR IT. If you sign for the shipment and do not note damage or do not refuse it altogether, you are taking all and full responsibility for it. Baileigh Industrial will not be able to provide you any parts for free or provide you with a new machine due to hidden damage. Unfortunately, Baileigh Industrial cannot be responsible for damages that are not noted on the delivery receipt. Please feel free to contact us with any questions.

| Sales Rep | Payment Terms | FOB Point | Shipping Terms | Carrier | Date |
|-----------|---------------|-----------|------------------|--------------|---------------------|
| JDEPREY | PREPAYMENT | Origin | Prepaid & Billed | TO BE DETER. | 03/22/2018 |
| | | | | | (VALID FOR 30 DAYS) |

| Line | QTY | Unit Price | Part Number | Description | B.C.D | Ext. Price |
|---|-----|------------|-------------|--|-------|------------|
| 1 | 1 | \$4,795.00 | DP-1500VS | 220 Volt 1 Phase Inverter Driven Drill Press. 3 Speed Power Down Feed. 1-1/2" Mild Steel Capacity. <i>1 week lead-time</i> | 10 | \$4,315.50 |
| <input type="checkbox"/> Non Returnable | | | | | | |
| 2 | 1 | \$191.00 | BV-6M | Baileigh Industrial Swiveling Machine/Milling Vise - 5- 3/4" Jaw Width, 5" Jaw Opening | 10 | \$171.90 |
| <input type="checkbox"/> Non Returnable | | | | | | |

Authorization _____ Date: _____
By signing this document or providing payment, signee accepts all Baileigh Industrial Inc. terms and conditions, see attached or
<http://www.baileigh.com/terms-of-sale/>

| | |
|---------------------|---------------------|
| Subtotal | \$4,487.40 |
| Shipping & Handling | \$0.00 |
| Misc. | \$0.00 |
| T/D | <\$0.00> |
| Sales Tax | \$224.38 |
| TOTAL | \$4,711.78 |

4,487.40

My Cart (0 items)

Shop By Brand

Shop By Category

[HOME](#)[ABOUT US](#)[MY ACCOUNT](#)[VIEW CART](#)[HELP](#)[FINANCING](#)

BROWSE

[New Woodworking](#)
[New Metal Forming](#)
[Elite by JET](#)
[New Metalworking](#)
[New Material Handling](#)
[New Vises & Clamps](#)
[New Air Compressors](#)
[Scratch & Dent](#)

[Home > New Metalworking >](#)

JET GHD-20PFT, 20" Geared Head Tapping Drill Press with Power Down Feed

JET

List Price: \$5,407.00
Our Price: \$4,499.00
You save \$908.00!

Qty: [Add to cart >](#)**This item ships for FREE!!**

\$124 / month

Availability: Usually Ships in 1 to 2 Business Days
Product Code: 354026

[Add to Wish List](#)[+ Larger Photo](#)[Email a Friend](#)

Alternative Views:



FREE SHIPPING
on all orders over \$250

This means you do not pay any extra fees no matter what. No Residential or Liftgate Fees!

FOLLOW US...



[Description](#) [Technical Specs](#) [Extended Information](#)

This 20" geared head drilling and tapping press has a heavy duty design and allows for a variety of precision drilling applications. Included are three power down feeds with a built-in spindle lock. The head tilts left or right and also has a calibrated fine down feed built-in. The large production table and T-slotted base has an easy to access table raiser. Also included are integrated tapping and reversing controls, a drill chuck arbor, and a draw bar.

Features

- Heavy-duty design allows a variety of precision drilling and tapping applications
- Easy to read internal depth gauge
- Three power down feeds
- Calibrated fine down feed built-in
- Built-in spindle lock
- Head tilts left or right
- Easy accessible table raiser
- Large production table and T-slotted base
- Integrated tapping and reversing controls
- T-slotted worktable
- Drill chuck arbor
- Draw bar
- TEFC Motor



Related Products...

Premium 18 PC 5-C Collet Set with Rack 16TH
 Our Price: **\$179.55**

Add ☐

JET/ARBOGA 26" Gear Head Drill Presses, J-A3008

Add ☐

VBS-3612, JET 36" Vertical Bandsaw (2HP, 3Ph, 230/460V)
 Our Price: **\$10,999.00**

Add ☐

JET/ARBOGA 20" Gear Head Drill Presses, J-A2608

Add ☐

\$303 / month

HBS-1321W, 13"x21" Capacity, 3HP, 3Ph, 230/460V

Our Price: **\$11,799.00**
 • ***Call us for Promo Pricing!**

Add ☐

\$325 / month

VBS-1610, JET 16" Vertical Bandsaw (2HP, 3Ph, 230/460V)

Our Price: **\$5,999.00**Add ☐

\$165 / month

16-piece 5-C Collet Set

Our Price: **\$217.55**Add ☐

JVM-836-1, Vertical Milling Machine 8" x 36" Table, R-8 Taper, 1-1/2HP, 1Ph, 115/230V

Add ☐



Share your knowledge of this product with other customers... Be the first to write a review

Browse for more products in the same category as this item:

New Metalworking
New Metalworking > Drill Presses

My Recent History

DP-1750G, 26" Gear Driven Drill Press, 2HP, 220V, 3 Phase \$4,325.00

[VIEW HISTORY OF ITEMS](#)

[VIEW HISTORY](#)

[VIEW HISTORY](#)

[About Us](#)
[Privacy Policy](#)
[Legal Statement](#)

[FAQs](#)
[Financing Available](#)
[Product Index](#)
[Category Index](#)

[Track My Order](#)
[My Account](#)
[Shopping Cart](#)

[Contact Us](#)
[Site Help](#)
[Become an Affiliate](#)



Copyright © 2018 EQUIPMENT SALES AND SURPLUS. All Rights Reserved.
Built with Volusion