

COVID-19 Disease Activity

Wisconsin Manitowoc	Case Activity	Percent Positive	CLI Activity	ILI Activity	i
	Medium	Low	Medium	Low	

Updated: 6/23/2021

Hover over visuals and text to find more information.

Select Area
Manitowoc

Two Week Range
6/9/2021 - 6/22/2021

Activity Indicator

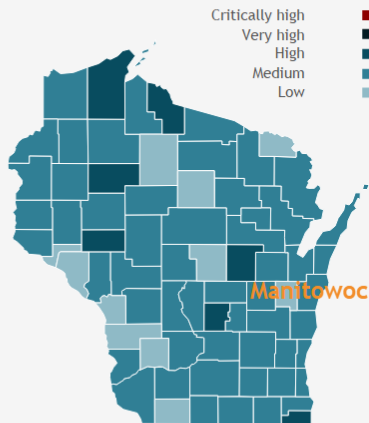
- ☒ Case Activity
- ☐ Percent Positive
- ☐ CLI Activity
- ☐ ILI Activity

View Type

- ☒ County View
- ☐ Region View

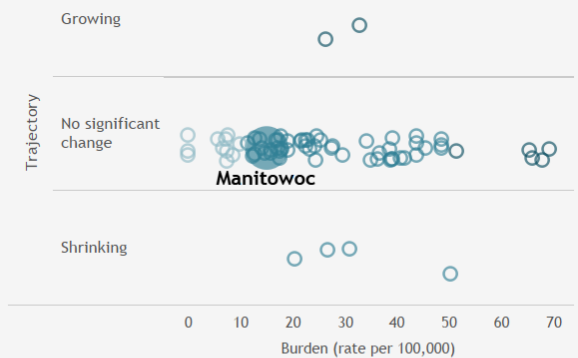
In **Manitowoc** between 6/9/2021 - 6/22/2021, the case activity level was **medium**.

This page shows information on case burden (rate per 100,000) and trajectory (percent case change). Case activity is a combination of burden and trajectory. For definitions of burden, trajectory, and disease activity levels, see below "About our data: How we measure case activity". Confirmed case activity is an important starting metric to understand current COVID-19 levels in your community. For additional information beyond cases, look at the COVID-like illness (CLI) and influenza-like illness (ILI) sections which provide more insight into the levels of respiratory illness in your community.



Case activity level by county (last two weeks)

Each circle represents a county.



Manitowoc County data (last two weeks)

Activity

Medium

Burden
(per 100,000)

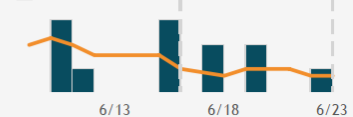
15.0
(Moderate)

Trajectory

No significant change ↔

Cases over time

Average Daily Cases
Positive Cases



Residents who have received at least one dose in Manitowoc County:

COVID-19 Vaccines for Wisconsin Residents

Updated: 6/24/2021

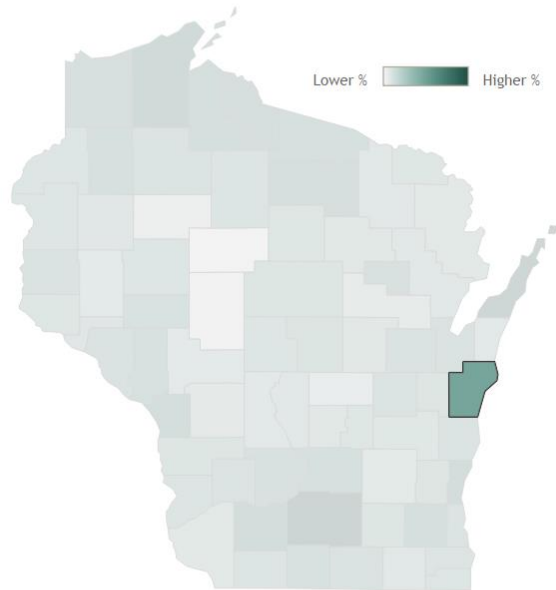
HERC region data

See data for:

- ☒ Residents who have received at least one dose
- ☐ Residents who have completed the vaccine series

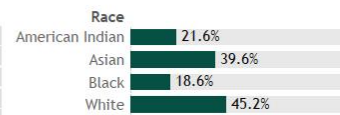
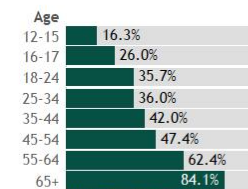
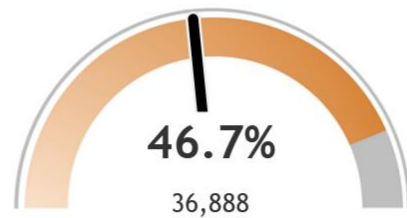
Percent of Wisconsin residents who have received at least one dose by county

Click a county to filter data



Percent of Manitowoc County residents who have received at least one dose

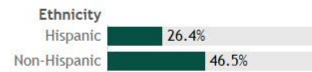
The orange represents the population for whom the vaccine is authorized. The gray indicates the population under 12 years of age for whom the vaccines are not authorized.



*1.7% of records reported a race of "Other".
*3.3% of records reported an unknown race.



*0.2% of records were reported without sex.

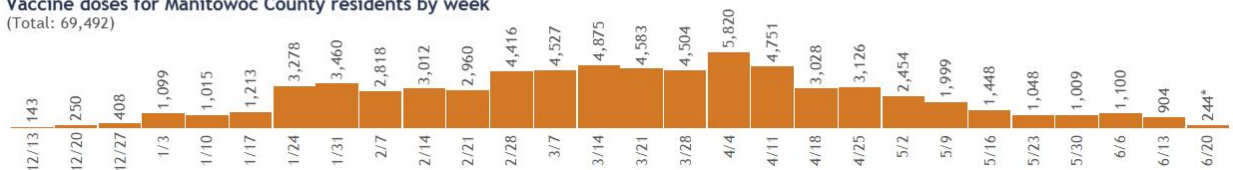


*2.4% of records were reported without ethnicity.

[View more data on racial and ethnic disparities in Wisconsin](#)

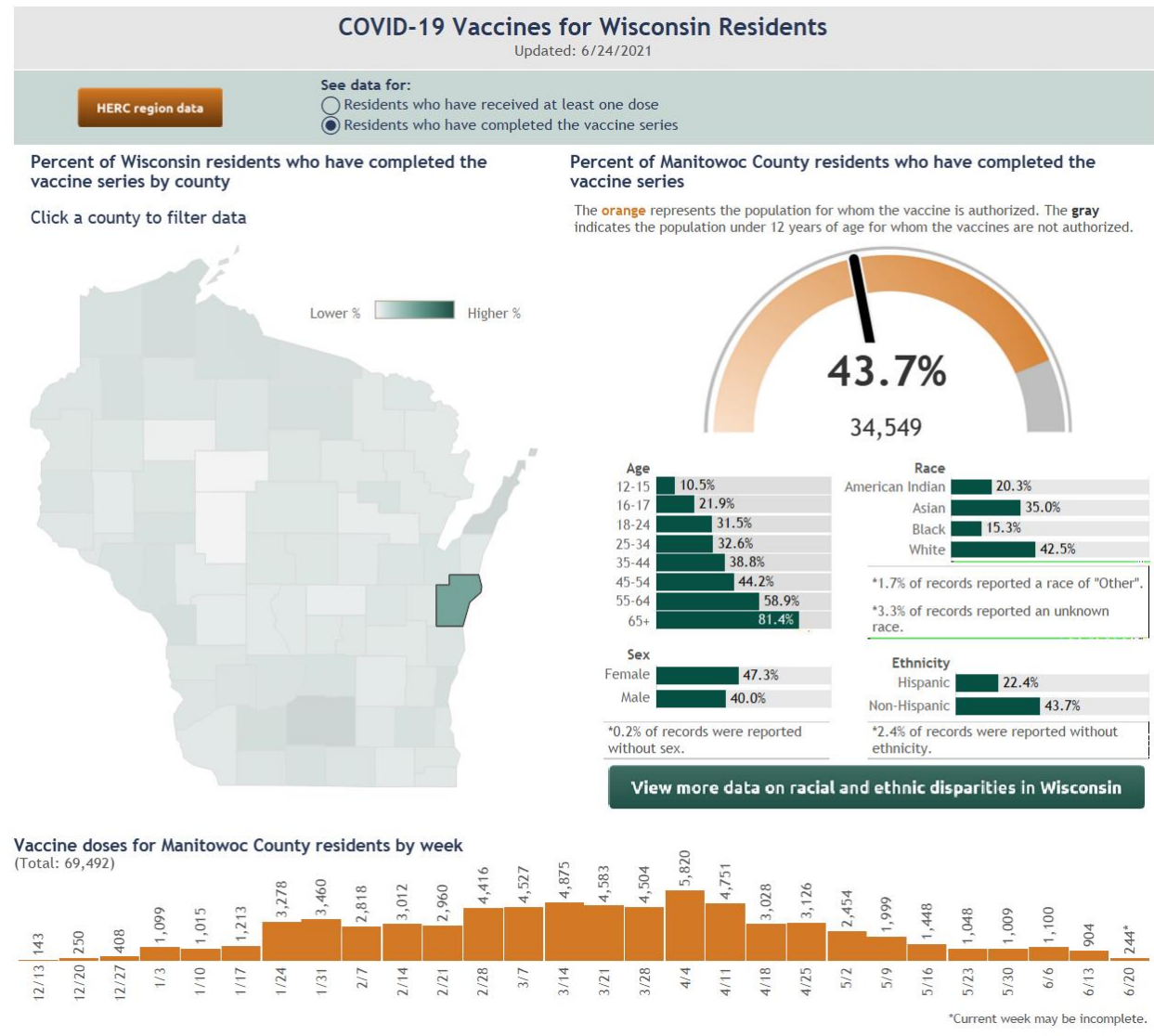
Vaccine doses for Manitowoc County residents by week

(Total: 69,492)



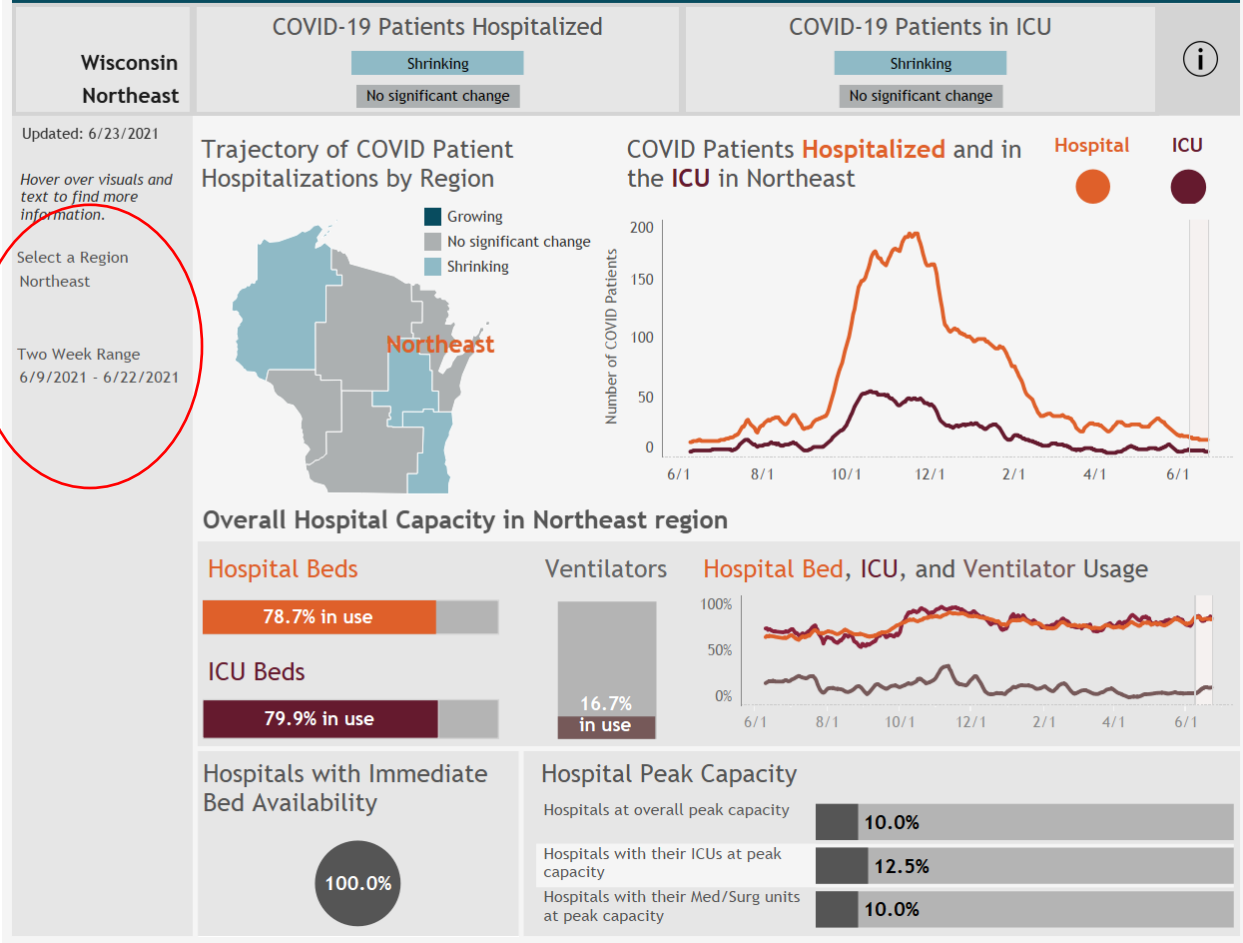
*Current week may be incomplete.

Residents who have completed the vaccine series in Manitowoc County



Source: https://www.dhs.wisconsin.gov/covid_19/disease.htm

COVID-19 Hospitalizations and Hospital Capacity



Source: <https://www.dhs.wisconsin.gov/covid-19/disease.htm>

County	New Cases past 14 Days as of 06.24.2021	County Fatality rate	Potential fatalities based on new cases and county rate of fatality
Manitowoc	12	1.05	94
Brown	87	.84	300
Sheboygan	28	1.11	165

Source: <https://coronavirus.jhu.edu/map.html>

	MPL Staff Capacity Reporting Chart
WEEK	Percentage of Available Desk Staff
May 31	76.40%
June 6	83.31%
June 13	78.70%
June 20	75.97%

Johns Hopkins University of Medicine, Coronavirus Resource Center:

<https://coronavirus.jhu.edu/map.html>

Manitowoc County: <https://bao.arcgis.com/covid-19/jhu/county/55071.html>

Brown County: <https://bao.arcgis.com/covid-19/jhu/county/55009.html>

Sheboygan County: <https://bao.arcgis.com/covid-19/jhu/county/55117.html>

Wisconsin Economic Development Corporation Re-opening guidelines: <https://wedc.org/reopen-guidelines/>

COVID-19 Resource page compiled by CVMIC: <http://www.cvmic.com/covid-19-website-resource-page/>