

© Vierbicher Associates, Inc.

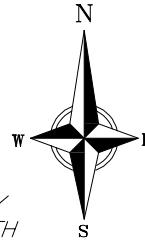
18 May 2024 - 10:37a G:\TLG_Homes\250456.TLG_Deerbrook Lane Manitowoc\CADD\250456 Exhibit Vacation.dwg by: nkw

R/W Vacation Exhibit

Part of the Northwest 1/4 and Northeast 1/4 of the Southeast 1/4 of Section 11, T19N-R23E, City of Manitowoc, Manitowoc County, Wisconsin.

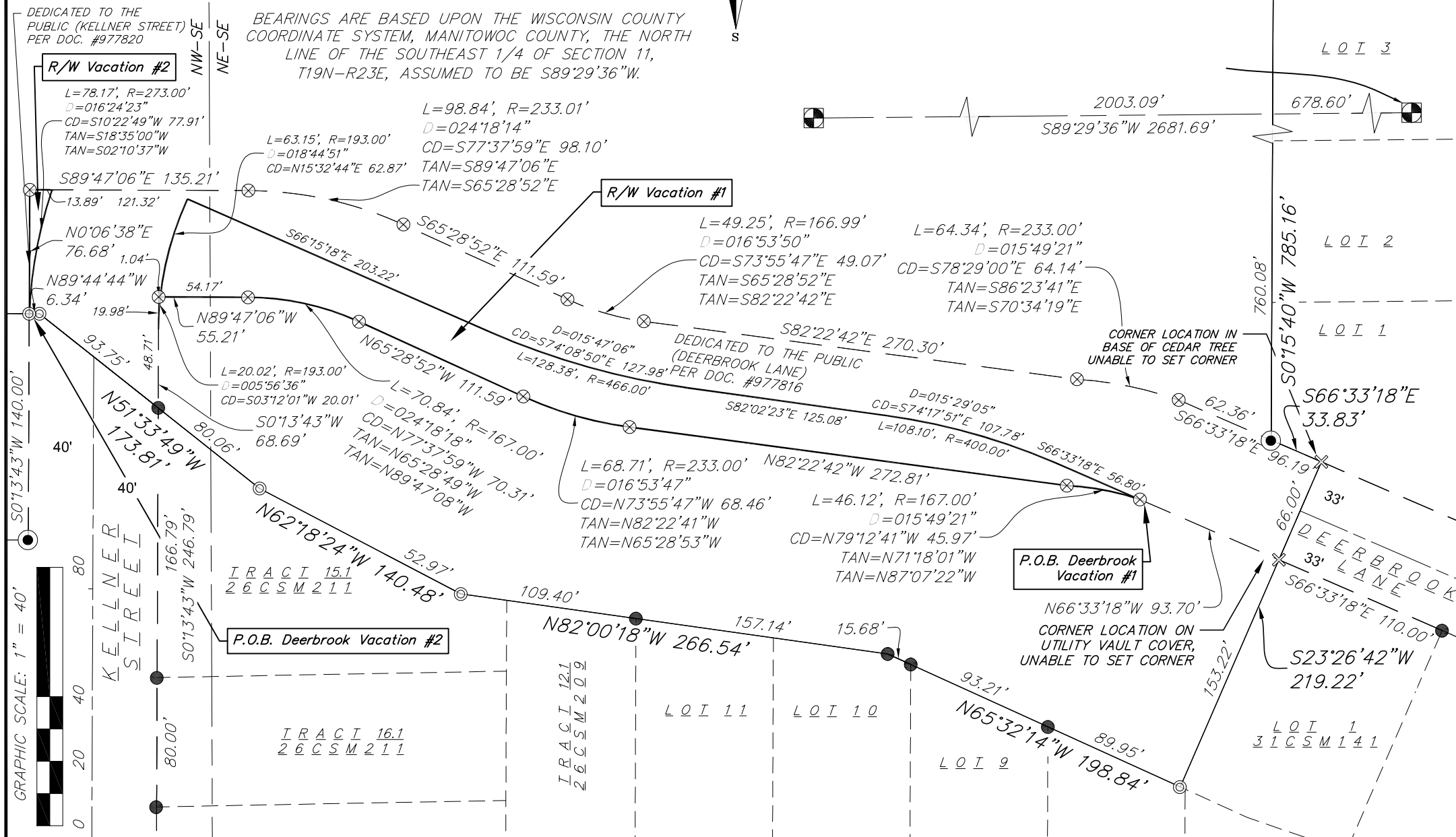
DEDICATED TO THE PUBLIC (KELLNER STREET) PER DOC. #977820

BEARINGS ARE BASED UPON THE WISCONSIN COUNTY COORDINATE SYSTEM, MANITOWOC COUNTY, THE NORTH LINE OF THE SOUTHEAST 1/4 OF SECTION 11, T19N-R23E, ASSUMED TO BE S89°29'36"W.



LEGEND

- PUBLIC LAND CORNER AS NOTED
- FOUND 3/4" Ø IRON ROD
- FOUND 1" Ø IRON PIPE
- SEE NOTE FOR EACH LOCATION
- FOUND 1 1/4" Ø IRON ROD
- "COMPUTED" POINT OF RECORD



SHEET 1 OF 2

SURVEYED BY:
Vierbicher Associates, Inc.
400 Security Blvd, Ste 1
Green Bay, WI 54313
(920) 434-9670

SURVEYED FOR:
The Lodel Group
1701 Washington St.
Suite 200
Manitowoc, WI 54220
Drawing No. L-12635

Job #: 250456
Date: 05/18/2026
Rev: ---
Drafted By: NKOV
Checked By: MLON

vierbicher
advisors / engineers / surveyors