

DE-25-6

Capital Project Request Form



Request Type:

Department: Date:

Title of Request:

Department Priority

Linked to another project?
☐ Yes
☒ No

Project Request is: ☒ New
☐ Replacement
☐ Modification

Estimated Useful Life:

This is a limited field, please attach documents for more detail.

Description:

Basis of Cost: ☒ Quote
☐ Bid
☐ Estimate

Total Cost

Revenue (if any) Net Cost

Will there be additional costs in future years to complete this project?

select one: ☒ Yes
☐ No

If yes, amount?

Finance Dept: Account

Sent to Dept: ☐

Action:



Vermeer®
Wisconsin

5915 N. Richmond Street
Appleton, WI 54913
(920) 687-9988
kbarnes@vermeerwisconsin.com

3/18/2025

Quote #: 00604-KB

Bill To:
City of Manitowoc
2655 South 35th St.
Manitowoc, WI 54220-5965

Ship To:
City of Manitowoc
2655 South 35th St.
Manitowoc, WI 54220-5965

1 - SC852 STUMP CUTTER W/REMOTE

\$96,695.68

NEW

- 74 Hp Deutz Td2.9 Tier 4 Final Diesel Engine
- Length: 147"
- Width: 35"
- Weight: 4467 Lbs
- Two Speed, Self-Propelled, 4Wd With Differential Lock
- Vermeer Exclusive Yellow Jacket Cutting System With 26 Teeth
- Hydrostatic Direct Drive Gearbox System
- Three Position Swing Out Operator Control Station
- Operator Presence Handles On Control Station
- Vermeer Patented Smart Sweep System
- Low Oil Pressure And High Coolant Temperature Shut Down System
- Optional Remote Control
- Four-Bar Linkage System Where As The Boom Is Being Lowered, The Cutter Wheel Moves Away From The Machine
- 34" Wide Chip Blade
- 1 Year / 1,000 Hour Parts And Labor Standard Vermeer Limited Warranty
- 3 Year/ 3,000 Hour Vermeer Extended Limited Warranty On Gearboxes And Drivelines
- 2 Year / 2,000 Hour Limited Deutz Engine Warranty Per Engine Manufacturer

1 - MULTI EQUIPMENT PURCHASE DISCOUNT

(\$1,000.00)



Vermeer®
Wisconsin

5915 N. Richmond Street
Appleton, WI 54913
(920) 687-9988
kbarnes@vermeerwisconsin.com

Machine	\$95,695.68
Total Due	\$95,695.68

Additional Options

1 – CP PREM 12 MOS, UNLIMITED HRS - 500 HRS MAINT	\$7,404.00
1 – CP PREM 24 MOS, UNLIMITED HRS - 500 HRS MAINT	\$9,901.00

PRICING VALID FOR 14 DAYS FROM THE DATE OF THE QUOTE.

Accepted by: _____

Date: _____

Title: _____

Sincerely,
Kory Barnes
Sales Representative
(920) 360-5581
kbarnes@vermeerwisconsin.com



MORBARK®



Equipment Quote and Order

Sold To: City of Manitowoc
900 Quay St
Manitowoc, WI 54220
Herein referred to as 'buyer'

Final Delivery: City of Manitowoc
TBD
TBD

Ship To: LF George Inc.
on-site unit
Attn: Dan McCarthy

Quote #: R0250823 Quote Date: 2/26/2025 Contact: Lead Time: currently available
Terms: Net 30 Days Ph #: Delivery Instruction: FOB-Destination
Preparer: Erlka Snyder Email: Customer PO#:

2023 Rayco RG74T-R Stump Cutter with Radio Remote Control

EQUIPMENT AND OPTIONS

STANDARD UNIT:

- Cummins QSF3.8, 74-HP, Tier 4 Final diesel engine with 295 ft-lbs of peak torque
- DOES NOT require DEF (Diesel Exhaust Fluid)
- DOES NOT utilize DPF (Diesel Particulate Filter)
- Rubber track undercarriage with non-marking 250 mm (9.8-inch) tracks
- Counter-rotating rubber tracks
- Undercarriage retracts for travel thru 36-inch gates
- Overall 51-inch working width/35-inch retracted width
- Two speed ground travel
- Radio remote control with electric over hydraulic controls
- Quick Stop cutter wheel
- Hydrostatic, variable rpm cutter wheel drive system
- 28" diameter x 1" thick cutter wheel
- 40 Rayco Super Tooth cutting tools
- Auxiliary chip retainer curtains
- Hour-meter
- Fuel gauge
- Command Cut
- Back fill blade w/fold-out wings allows travel thru 36-inch gates
- Positive lock securing system (trailer hook up)
- European compliant
- Safety / Sales Kit

Part Number
RG74T-R

37203

Sourcewell #031721-MBI, Member ID#32517

TOTAL CALCULATION

Quantity Requested: 1

Total from Above Choices =	\$102,530.00
Discount 13.5%	(\$13,841.55)
Material Surcharge =	\$7,747.75
Freight-In =	\$675.00
PDI / Delivery =	\$500.00
Extended Price =	\$97,611.20

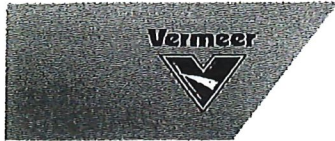
QUOTE IS VALID FOR 30 DAYS

PURCHASE ORDERS MUST BE MADE OUT TO MORBARK LLC

W9 can be requested from erika.snyder@morbark.com

Morbark LLC

Effective 1/19/2022



Date: 3/19/2025

Pricing Valid Until: 4/18/2025

Quote Number: Q-34307

Prepared For:

SOURCEWELL TREE MAINTENANCE
CITY OF MANITOWOC
900 QUAY STREET
MANITOWOC, WI 54220

100900

Sourcewell Contract #010925-VRM

Vermeer Dealer:

688 - VERMEER - WISCONSIN, INC
920-687-9988
LC.INFO@VERMEERWISCONSIN.COM
5915 N RICHMOND ST
APPLETON, WI 54913

Description	Qty
SC852	
SC852006 SC852 74 HP DEUTZ DSL/RUB.TIRE/4WD TIER 4 FINALRubber tired, self-propelled 4WD stump grinder with 74 HP Deutz TD2.9L tier 4 final liquid cooled turbo-charged diesel engine with multifunction display (MFD), low oil pressure and high coolant temperature shutdown; operator presence system, electric over hydraulic joystick propel controls with side swing out control station; front auxiliary propel functions; Auto Sweep control; chip blade with hydraulic raise & lower, rubber curtains.	1
SC852045 SC852 YELLOW JACKET CUTTING SYSTEM(with gearbox)	1
SC852AM010 TELEMATICSIIncludes telematics hardware and 3 years cellular service. Completed machine registration and customer account required to access the Vermeer telematics portal (telematics.vermeer.com).Telematics Silver (formerly Fleet + Edge) is available for purchase on certain machines via the Vermeer store (vermeerstore.com). Use the machine VIN to verify Telematics Silver service availability on vermeerstore.com.	1
SC8521T4RC SC852 RADIO REMOTE CONTROL OPTION - 2.4 GHZRadio for worldwide use.	1
Subtotal Price Equipment (each)	\$ 95,234.68
Freight and Prep(each)	\$ 1,461.00
Quantity of Complete Units	1
Subtotal:	\$ 96,695.68
Grand Total:	\$ 96,695.68

Terms

By signing below you understand the information presented and acknowledge order acceptance:

Vermeer: _____

Customer: _____

Date: _____

Date: _____

Prices and availability are subject to change without notice. All prices are exclusive of any and all duties, import fees, taxes or other similar charges including sales and federal excise tax, if applicable. Prices may not be applicable in any transaction involving a trade or rental transaction. Unless noted, dealer freight and preparation to be determined. All prices quoted herein are US Dollars. All quotations valid for thirty days from date of quotation. The pricing set forth herein is an estimate only based on currently prevailing market conditions. The above may not include all possible specifications available with this model. For complete product specifications, please contact your local, authorized Vermeer Dealer.

OFFER TO PURCHASE

Mirsberger Sales & Service Inc.

1246 W. Main St.

Hilbert, WI, USA, 54129

P: (920) 853-3435

E: sales@mirsbergers.com

MIRSBERGER
TRAILERS

SOLD TO

CITY OF MANITOWOC

900 QUAY ST

MANITOWOC, WI, USA, 54220

ORDER# CO-0001919

March 27, 2025

Sold by: Craig Abler

UNIT PURCHASED

VIN/SN: 46UDT2228S1298692

NEW - 2025 DIAMOND C TRAILERS, Equipment Trailer, HDT207 22X82

DC98692

OMI

[Color exterior: ONYX BLACK]

Unit Pricing

Base Unit

\$11,795.00

ALL LED LIGHTS

\$0.00

AXLES 2-7K DROP AXLES W/ ELECTRIC

\$0.00

DRUM BRAKES

SUSPENSION: 6 LEAF SLIPPER ROLLER

\$0.00

SPRINGS

CROSSMEMBERS: 3" I BEAM ON 16"

\$0.00

CENTERS

FRAME: 8" X 10LB I BEAM

\$0.00

DECK: 6' STATIONARY DECK/16' TILT BED

\$0.00

TILT: HYD DAMPENED (GRAVITY)

\$0.00

FENDER: 14GA TEARDROP DIAMOND

\$0.00

PLATE BOLT ON

COUPLER: 2 5/16" 21K DEMCO EZ LATCH

\$0.00

(ADJ CHANNEL)

TONGUE: INTEGRAL W/ FRAME (I BEAM)

\$0.00

STORAGE: HD V TONGUE BOX W/ LID

\$0.00

JACK: 12K DROP LEG JACK

\$0.00

SPARE MOUNT-PASSENGER (CURB) SIDE

\$0.00

OF TONGUE

STEP: 1-36" SIDE STEP

\$0.00

FLOOR: 2" TREATED FLOOR

\$0.00

STAKE POCKETS: 2"X3/8" RUBRAIL

\$0.00

W/STAKE POCKETS

TIE DOWNS: 2 EXTRA 5/8" D-RINGS (6

\$0.00

TOTAL)

TIRES: ST235/80R16 RADIAL 14PLY 8 HOLE

\$0.00

BLACK

\$11,795.00

Installed Options

ST235/80/16 Load G 16x6 865 Black mod

1 @ \$299.00

\$299.00

SPARE MOUNT DEAL - MOUNTED SPARE

0.25 @ \$120.00

\$30.00

TIRE

\$329.00

Products & Fees

DEAL DISCOUNT - DEAL DISCOUNT GIVEN

\$0.00

License Fee - License Fee

\$5.00

Title Fee - Title Fee

\$164.50

\$169.50

TOTALS

Units \$11,795.00

Installed Options \$329.00

Products & Fees \$169.50

Sub-Total \$12,293.50

Total \$12,293.50

Balance Due \$12,293.50

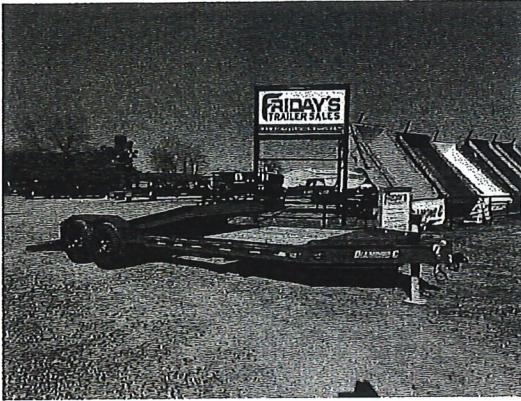
Down payments are non-refundable. Quotes are valid for 10 days. A 3% surcharge will be charged on all credit card transactions over \$1,000. All units are required to be picked-up within 2 weeks of arrival.

Buyer : _____

Seller : _____

Texarkana

Phone: +19032784882
327 Shiloh Rd
Texarkana, Texas
Email: josh@fridaystrailersales.com



2025 Diamond C Trailers HDT207 22'x82" Tilt Trailer Pacesetter Edition Equipment Trailer

Type	Trailer or Truck Bed	Category	Equipment Trailer
Stock#	2221	VIN	46UDT2227S1297775
Location	Texarkana	Year	2025
Status	Available	Condition	New
Manufacturer	DIAMOND C TRAILERS	Model	HDT207 22'x82" Tilt Trailer Pacesetter Edition
Floor Length	264.00in / 22ft	Floor Width	82.00in / 6ft 10in
GVWR	14900	Weight	4270
Payload Capacity	10630		
Axles	2	Color	Blue
Is Tilt	Yes	Pull Type	Bumper

https://www.fridaystrailersales.com/tf/units/2025-diamond-c-trailers-hdt207-22-x82-tilt-trailer-pacesetter-edition-equipment-trailer?stock_number=2221

Price: \$12,400.00

Description

Model - HDT Package Options - Pacesetter Edition GVWR - 207 Package (14.9K GVWR)
Length/Width - 22' x 82" - 207 pkg Axles - 2 - 7,000 lb Super Lube Brakes - Electric Drum
Suspension - Slipper Roller Pull Type - Bumper Pull Frame - 8" x 10 lb I-Beam Frame Tilt -
Hydraulic Dampening Cylinder w/ Valve Control Deck - 6' Stationary Deck at Front Paint Type - DM
Difference Maker Coating System Paint Color - Onyx Black Floor - 2" Treated Lumber Cross-
Members - 3" I-Beam on 12" CentersPACESETTER FEATURE Coupler - 2-5/16" - 21,000 lb
Demco EZ-Latch, Adjustable Channel Jack - 12K Simol 2-Speed Drop-Leg Jack Storage - HD V-
Tongue Lid Fenders - Upgraded 3/16" Diamond Plate Fender, Heavy DutyPACESETTER
FEATURE Steps - Step Latch Steps - 36" Side Step PACESETTER FEATURE Lights - All LED
Lights Stake Pockets - 2" x 3/8" Rub Rail w/ Stake Pockets Tie Downs - 4 - 5/8" D-Rings Fork
Holder - Fork HoldersPACESETTER FEATURE Tire Size - 235/80R16 14 Ply Radial Wheel Color -
Black Spare Tire - Add Matching Spare Tire

Trailer Place

2507 County Rd 231
Wharton, Texas (TX) 77488
Call Us: (979) 532-1486
<https://www.trailerplace.com/>

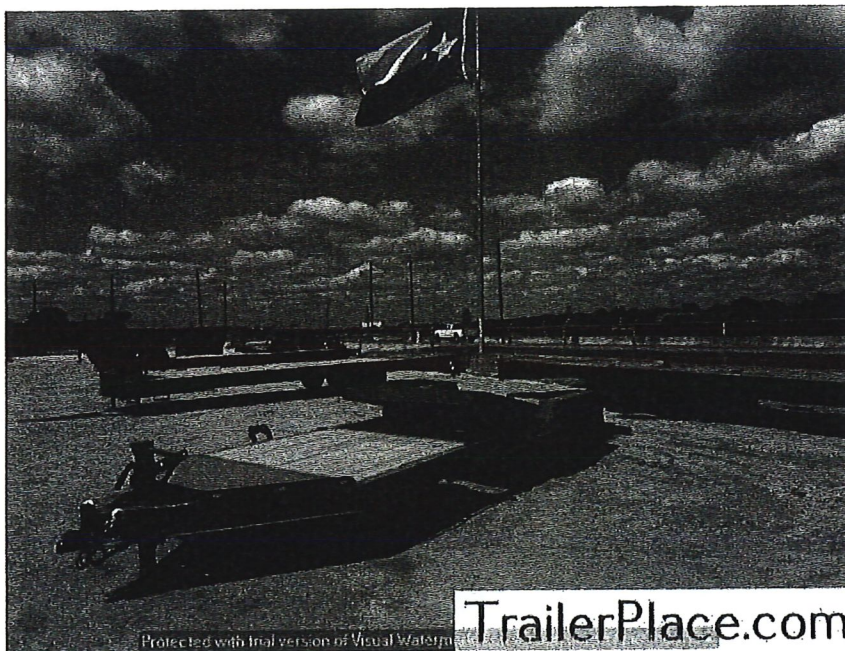


2025 DIAMOND C HDT207 82"X22' TILT EQUIPMENT TRAILER

RETAIL PRICE - \$14,679

OUR PRICE - \$12,249

SAVINGS - \$2,430



TRAILERPLACE.COM
979-532-1486
2507 County Road 231
Wharton TX 77488
Financing and Delivery Available

2025 Diamond C HDT207 82"x22' Tilt
6' Stationary Deck, 16' Hydraulic Dampened Tilt Bed(Gravity)
2- 7,000LB Drop Axles
Electric Drum Brakes
6- Leaf Slipper Roller Spring Suspension
3" I-Beam Cross Members on 16" Centers
Diamond Plate Tear Drop Fenders
2 5/16 Demco Ez Latch

- HD V-Tongue Box w/Lid
- 12k Drop Leg Jack
- 2" Treated Floor
- Rub Rail w/ Stake Pockets
- ST235/80R16 14 Ply Radial Tires
- Matching Spare Tire
- All LED Lights
- Color: Platinum Silver Metallic

Selling Price \$12,250 Plus TT&L

4% Processing Fee On Credit Cards

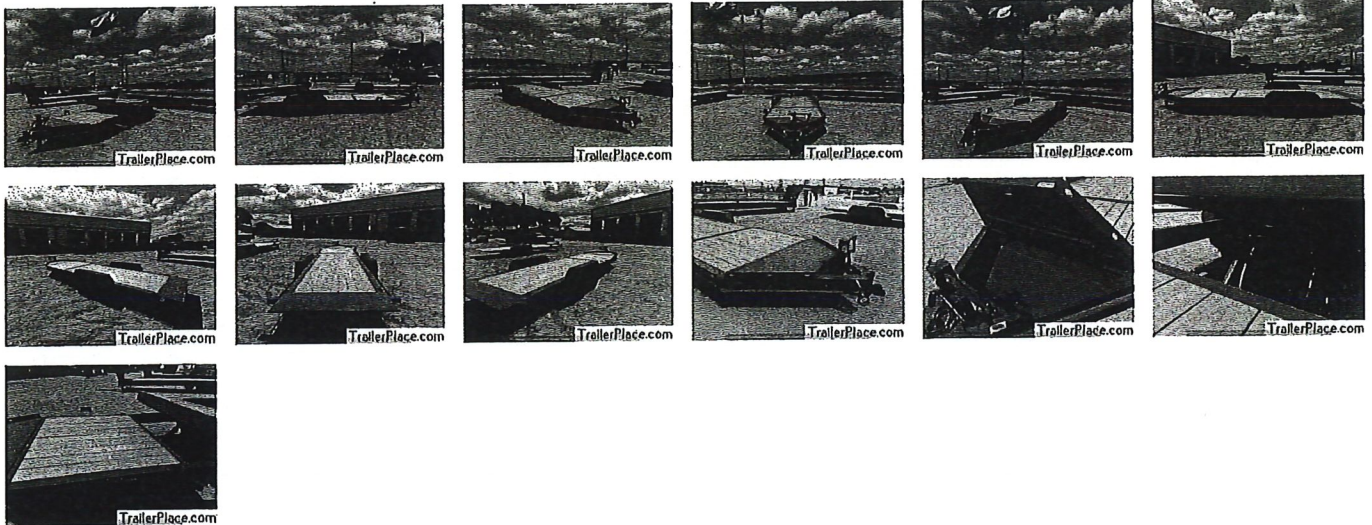
Prices listed on website are Cash or Texas Check Prices. Our sales team is happy to direct you to great Local and National lenders to Finance your New Trailer Purchase. We Pride ourselves in having the Best Pricing and Customer Service in the industry, and we can offer quick build times for any custom built trailers. Give us a call TODAY and let us earn your business.

gooseneck, fiber optic splicing, fiber optic, splicing trailer utility, tandem, single axle, equipment, car, hauler, carhauler, trailers, landscape, horse, heavy duty, light, weight, hydraulic, parts, accessories, shipping, cargo, in tx and houston, texas.

Cargos trailer , bob cat trailers , equipment trailer , single axle trailers , tandem axle trailer , dual tandem trailer , gooseneck trailers , bumper pull trailer , 3500lb axles trailers , 7000lb axles trailer , angle top trailers , pipe top trailers , bulldog trailer , 10k jack trailers , 7k jack trailer ,oil field trailers , landscape trailer , enclosed car hauler trailers , tool trailer , construction trailer Dexter suspension trailer , TRAILERS , trailers , Trailers, Diamond C Trailers

Our trailers sell faster than we can update our inventory, so please call for availability.

PHOTOS



HIGHLIGHTS

- Condition New
- Availability In Stock
- Location trailerplace
- Stock Number 23890
- Vin 46UDT2224S1123890
- Vehicle Type Cargo Trailer

- **Category** Tilt Trailers
- **Color** Red
- **Length** 22 ft
- **Width** 6 ft 10 in
- **GVWR** 14900 lbs
- **Axle Capacity** 7000 lbs
- **Hitch Type** Bumper Pull

MANUFACTURER INFO

DISCLAIMER

Advertised pricing excludes applicable taxes title and licensing and are subject to change without notice. Pricing may exclude any added parts, accessories or installation unless otherwise noted. Sale prices include all applicable offers. Not all options listed available on pre-owned models. Contact dealer for details.