

# CITY OF MANITOWOC FIRE & RESCUE DEPARTMENT

## APRIL 2025 MONTHLY METRICS



### INCIDENTS

475



### BUDGET

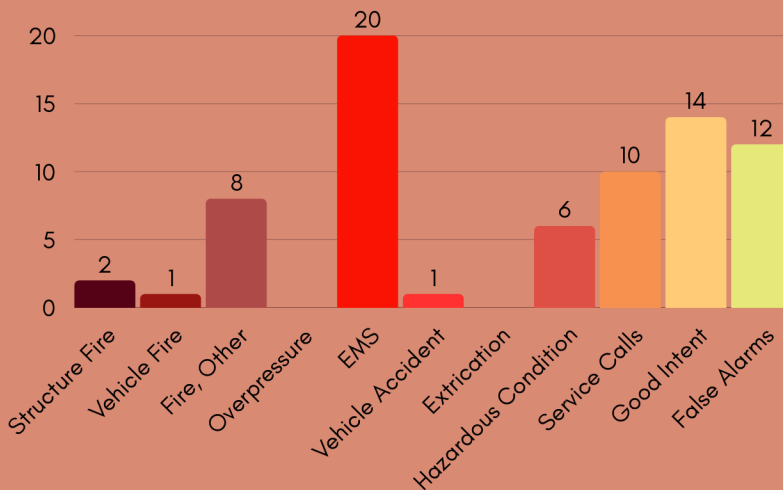
Monthly Expenses: \$580,837.94



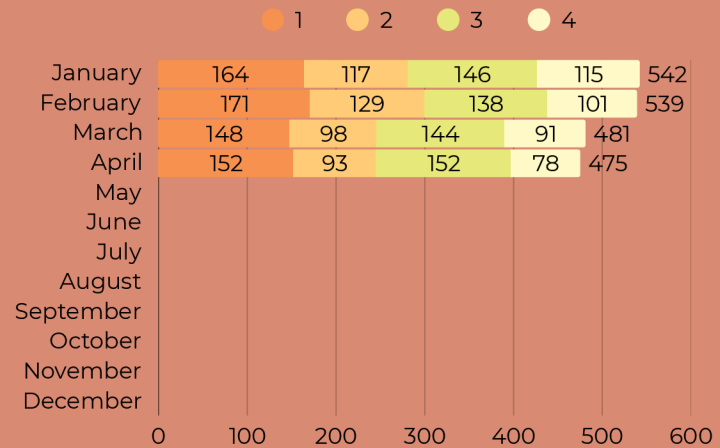
### Leave/Pay Summary - YTD

	A	B	C
VAC/HOL/Funeral/ED	1,815.20	1,972.00	1,816.00
Report/Call-Out	24.50	30.00	2.00
Sick Leave	442.00	985.00	1,941.25
Overtime	395.35	361.09	1,088.91

### FIRE INCIDENT TYPES



### INCIDENTS BY STATION

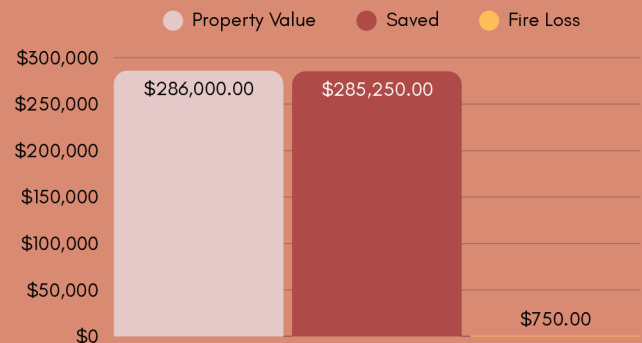


Fire Prevention	Month	YTD
Plan Review	5	13
Fire Inspections	82	306
Violations	41	106
Violations Corrected	34	76
Public Education Events	2	15
Adult Participants	24	185
Children Participants	16	294
Fire Suppress Systems	3	8

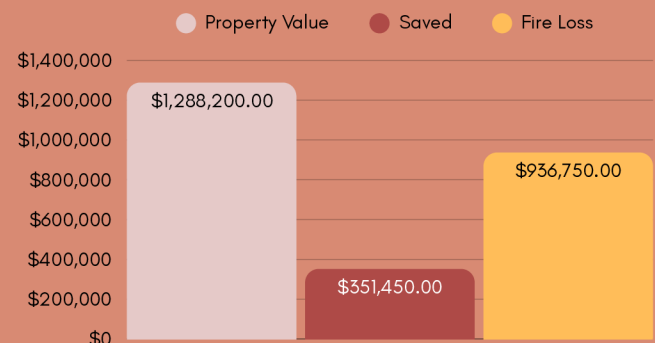
Professional Development	Hours	Attendees
Administration & Organization	3.00	4
Apparatus Operation	488.75	34
EMS	98.50	34
Fire Suppression & Tactics	450.00	44
Technical Rescue	38.00	10
Officer Development	29.25	14

### FIRE LOSS DATA

#### CURRENT MONTH



#### YEAR TO DATE



## SIMULTANEOUS CALLS

23.32%

4.05%



93.50



3

## AVERAGE RUN TIME

42.85 MINS

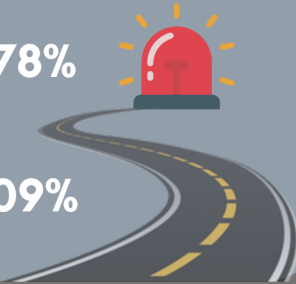
TURNOUT TIME  
< 2 MINUTES

89.78%



TRAVEL TIME  
< 5 MINUTES

67.09%



## Top 10 Incidents

## Month

## % of Total Calls

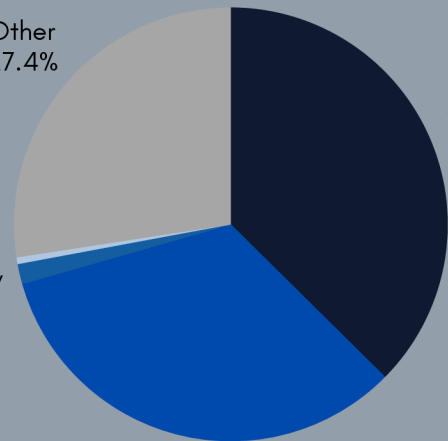
Falls	74	18.45%
Sick Person	73	18.20%
Breathing Problem	51	12.72%
Chest Pain (Non-Traumatic)	28	6.98%
Unconscious/Fainting/Near-Fainting	18	4.49%
Transfer/Interfacility/Palliative Care	17	4.24%
Unknown Problem/Person Down	17	4.24%
Convulsions/Seizure	13	3.24%
Heart Problems/AICD	9	2.24%
Abdominal Pain/Problems	9	2.24%

## TRANSPORT DESTINATION

Other  
27.4%

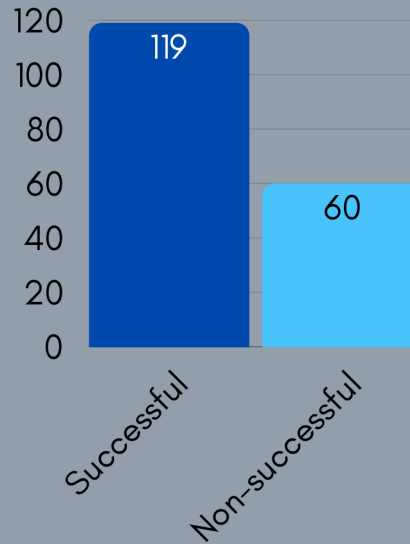
Aurora  
37.4%

Brown County  
1.5%

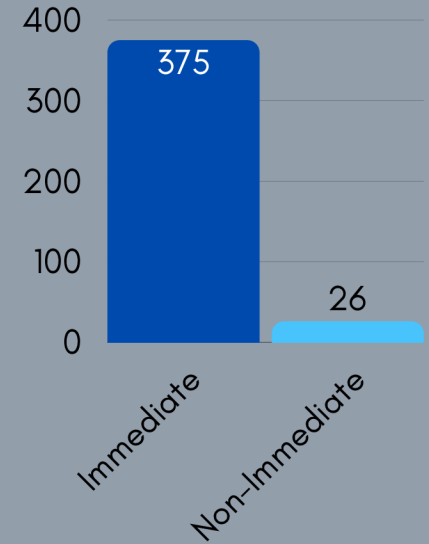


Holy Family  
33.2%

## IV STARTS



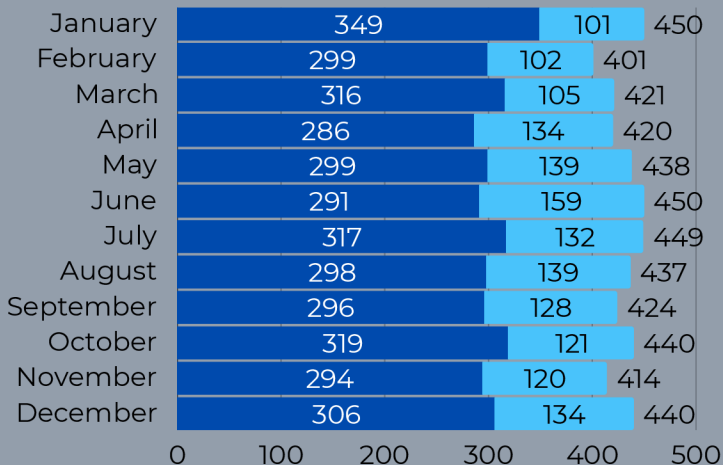
## AMBULANCE RESPONSE



## EMS TRANSPORTS VS TOTAL CALLS

### PRIOR YEAR

● Transports ● Other



### CURRENT YEAR

● Transports ● Other

