

330 Albert Drive #5
Manitowoc, WI 54220
June 20, 2023

AMBER -

~~Billy Hutterer~~ SAFETY COMM.
~~Operations Manager~~
Streets Department
900 Quay Street
Manitowoc, WI 54220

COPY

Re: Intersection of 26th Street & Franklin

Dear Mr. Hutterer,

We wish to make you aware of a potentially dangerous condition that has come to our attention.

At the intersection of 26th Street and Franklin, the Westbound Franklin traffic has no Stop sign and is free to proceed forward or to turn without any impedance. The Northbound and Southbound lanes of 26th Street have Stop signs. The eastbound traffic on Franklin also has a s Stop sign (this area seems to be basically a parking lot / train right of way).

Drivers on 26th Street have no indication (signage) that the Westbound Franklin Street traffic does not have a Stop sign. This creates a tenuous and possibly confusing situation. For example, if a Westbound driver prudently slows to negotiate the intersection a driver on 26th Street might interpret this as indicating that the Westbound car is going to stop. Also, with a lack of a Stop sign the Westbound Franklin drivers tend to encroach on the Northbound lanes as they are approach the intersection at speed. (see photos)

No doubt this scenario lets the traffic on Franklin Street flow very freely. However, one wonders whether this is a valid consideration in light of the possible confusion the situation might cause. Similarly you must ask whether a 4-Way Stop Sign configuration might be a safer alternative.

This intersection also has a very unusual sign that says: "RIGHT TURN NO STOP" for Northbound 26th Street's merge into Eastbound Franklin Street. This is odd, but perhaps not as hazardous as the lack of a Stop sign on Westbound Franklin.

We wonder if you might want to review the traffic situation we have detailed.

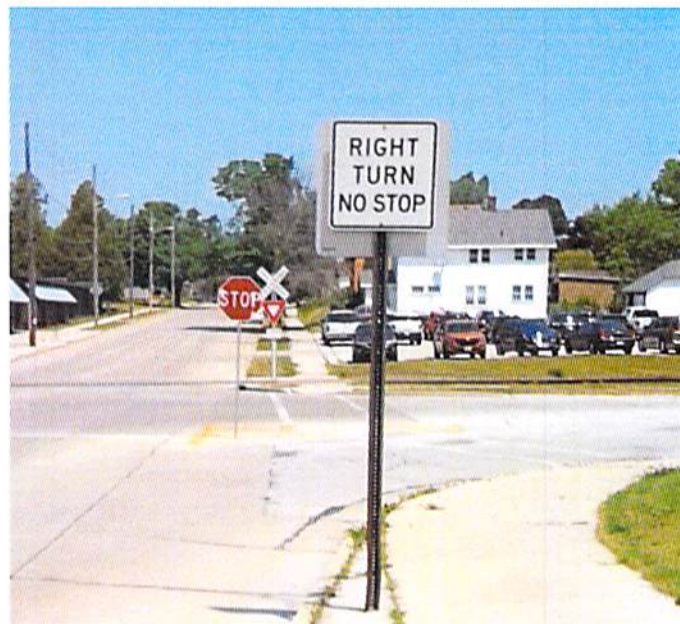
Sincerely,

Glenn Mitan
224/443-1461

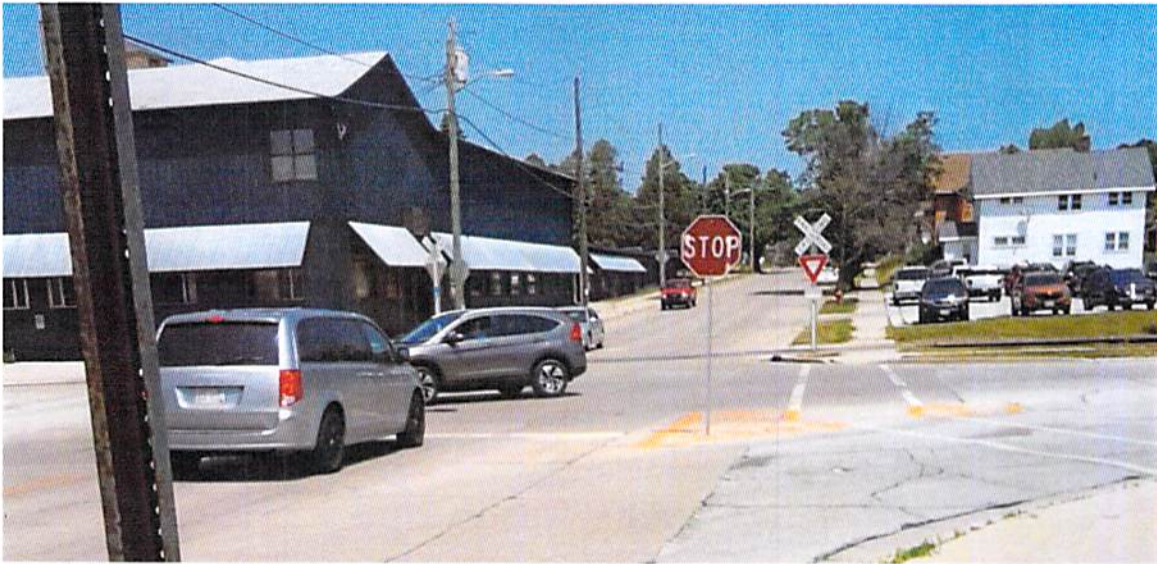
✓ cc: Mayor Nickels
Mike Frewerd, Dept. of Transportation



Vehicle comes from W/B Franklin Street into intersection with 26th Street and proceeds S/B on 26th



Sign on N/B 26th Street allows drivers to enter E/B Franklin Street without stopping.



Vehicle N/B on 26th Street has to wait for W/B Franklin Street Traffic to clear the intersection.