



August 10, 2023

Mr. Mark LeGreve  
Business Manager  
Saint Francis of Assisi Parish  
601 North 8<sup>th</sup> Street  
Manitowoc, Wisconsin 54220

**Re: Pre-Demolition Report – Asbestos**  
Former School Building  
1416 Grand Avenue  
Manitowoc, Wisconsin 54220

Dear Mr. LeGreve,

In response to your request, Keystone Environmental LLC. (Keystone) has completed testing of suspect asbestos-containing materials. The assessment was performed on the three-story building located at 1416 Grand Avenue, in Manitowoc, Wisconsin. This report provides an executive summary, an outline of the scope-of-work, and analytical results for the materials tested.

We are pleased to be of service to you. If you have any questions, comments, or require additional services, feel free to contact us at (608) 480-8822, or by e-mail at [contact@keystone-env.com](mailto:contact@keystone-env.com).

Sincerely,

A handwritten signature in black ink that reads 'T. Ryckman'.

Tucker Ryckman  
Owner

## **1.0 Executive Summary**

On July 11 and 12, 2023, Keystone collected one hundred and thirty-nine (139) samples (resulting in 141 analysis) of suspect asbestos-containing materials (ACMs) from the above referenced building. Keystone returned on August 2, 2023, and collected an additional thirty-four (34) samples (resulting in 39 analysis). **Analytical results indicated that the following building materials submitted for testing contained asbestos:**

- **Gray with red streaks 12"x12" floor tile and associated black floor mastic – Lower-level refrigeration room (adjacent to boiler room)**
- **All 9"x9" floor tiles – Rooms 1, 2, 101, 102, 103, 104, 105 106, lower-level kitchen, 1<sup>st</sup> floor storage room, west stairwell landing between 1<sup>st</sup> and 2<sup>nd</sup> floors and throughout the west side of the 2<sup>nd</sup> floor.**
- **All black floor mastic beneath 9"x9" and 12"x12" tiles – Throughout building (excluding lower-level dining hall and lower-level kitchen, these mastics sampled negative)**
- **Hard dark red vinyl baseboard – Throughout west half of 2<sup>nd</sup> floor**
- **Hard black vinyl baseboard and associated black mastic – Lower-level kitchen**
- **White patterned linoleum – Beneath sink – 2<sup>nd</sup> floor kitchen**
- **Brown glue pads – Above 7"x7" gray ceiling tiles – 1<sup>st</sup> Floor principles office**
- **All non-fiberglass thermal system insulation/fittings on piping – Above ceilings/behind walls throughout building**
- **Mastic beneath rubber roofing field – East half of roof**
- **Beige/gray window glazing – Throughout exterior windows**
- **Gray window caulking – Throughout exterior windows**

Building materials containing less than 1% asbestos, while not classified as an ACM by the United States Environmental Protection Agency (USEPA), do fall under the Occupational Safety and Health Administration (OSHA) Asbestos Construction Standard (29 CFR §1926.1101) and should be handled accordingly. During Keystone's assessment, the following building material was found to contain <1% asbestos.

- *Gray caulk (vertical seam) – Exterior – S.E. side*

**See table below for estimated quantities of identified ACMs. See attached tornado drill procedure floorplans for positive sample locations. Floorplans and photos of positive materials can be found in Attachment C.**

Keystone notes that this executive summary is not intended to be a stand-alone document and it is strongly recommended that this report be read in its entirety.

## **2.0 Scope-of-Work**

The scope of services included a survey for asbestos-containing materials in compliance with the USEPA regulation 40 CFR 61, Subpart M, National Emission Standards for Hazardous Air Pollutants (NESHAP), and Wisconsin Statute NR 447, which prohibit the release of asbestos fibers to the atmosphere during renovation or demolition activities.

Keystone representative Mr. Tucker Ryckman completed the sampling. Mr. Ryckman is a state of Wisconsin accredited asbestos inspector. Keystone inspector certifications are located in Attachment A.

## **3.0 Analytical Testing**

Samples were sent for analysis to San Air Technologies Laboratory (San Air), located in North Chesterfield, Virginia. San Air is recognized under the National Voluntary Laboratory Accreditation Program (NVLAP) as Laboratory #200870-0. All samples were analyzed via EPA 600/R-93/116 Method using Polarized Light Microscopy. PLM is an Environmental Protection Agency (EPA)-recognized method for determining asbestos content in bulk samples.

Analytical results and laboratory certifications are located in Attachment B.

## **4.0 Inspection Results**

The USEPA defines asbestos-containing materials (ACMs) as those materials containing greater than 1% asbestos by weight. Samples containing less than 1% asbestos are not considered ACMs.

Sample locations can be found in the attached school tornado drill floor plans.

*Note:* 2<sup>nd</sup> floor tornado drill plans are not representative of the current configuration of the structure. Keystone marked sample locations as accurately as reasonably feasible on the 2<sup>nd</sup> floor plan.

The following table summarizes the results of the inspection. Materials containing more than 1% asbestos are highlighted in **bold**.

ID	MATERIAL SAMPLED	LOCATION	% ASBESTOS	ESTIMATED TOTAL QUANTITY OF MATERIAL IN BUILDING
N	White Plaster Topcoat	Lower Level – Room 2	None Detected	60,000 sq/ft (total)
KEY-02	White Plaster Topcoat	Lower Level – Mechanical Closet	None Detected	60,000 sq/ft (total)
KEY-03	White Plaster Topcoat	1 <sup>st</sup> Floor – Room 101	None Detected	60,000 sq/ft (total)
KEY-04	White Plaster Topcoat	1 <sup>st</sup> Floor – Hallway	None Detected	60,000 sq/ft (total)
KEY-05	White Plaster Topcoat	1 <sup>st</sup> Floor – Room 107	None Detected	60,000 sq/ft (total)
KEY-06	White Plaster Topcoat	2 <sup>nd</sup> Floor – West Stairwell	None Detected	60,000 sq/ft (total)
KEY-07	White Plaster Topcoat	2 <sup>nd</sup> Floor – Near Kitchen	None Detected	60,000 sq/ft (total)
KEY-08	Gray Plaster Bottomcoat	Lower Level – Room 2	None Detected	60,000 sq/ft (total)
KEY-09	Gray Plaster Bottomcoat	Lower Level – Mechanical Closet	None Detected	60,000 sq/ft (total)
KEY-10	Gray Plaster Bottomcoat	1 <sup>st</sup> Floor – Room 101	None Detected	60,000 sq/ft (total)
KEY-11	Gray Plaster Bottomcoat	1 <sup>st</sup> Floor – Hallway	None Detected	60,000 sq/ft (total)
KEY-12	Gray Plaster Bottomcoat	1 <sup>st</sup> Floor – Room 107	None Detected	60,000 sq/ft (total)
KEY-13	Gray Plaster Bottomcoat	2 <sup>nd</sup> Floor – West Stairwell	None Detected	60,000 sq/ft (total)
KEY-14	Gray Plaster Bottomcoat	2 <sup>nd</sup> Floor – Near Kitchen	None Detected	60,000 sq/ft (total)
KEY-15	12"x12" Beige Floor Tile	Lower Level – School hall	None Detected	5,000 sq/ft (total)
KEY-16	12"x12" Beige Floor Tile	Lower Level – School hall	None Detected	5,000 sq/ft (total)
KEY-17	12"x12" Beige Floor Tile	Lower Level – School hall	None Detected	5,000 sq/ft (total)
KEY-18	Black Mastic Beneath Beige 12"x12"s	Lower Level – School hall	None Detected	(Negative Black Mastic Total) 6,500 sq/ft
KEY-19	Black Mastic Beneath Beige 12"x12"s	Lower Level – School hall	None Detected	(Negative Black Mastic Total) 6,500 sq/ft
KEY-20	Black Mastic Beneath Beige 12"x12"s	Lower Level – School hall	None Detected	(Negative Black Mastic Total) 6,500 sq/ft

ID	MATERIAL SAMPLED	LOCATION	% ASBESTOS	ESTIMATED TOTAL QUANTITY OF MATERIAL IN BUILDING
KEY-21	Blue 12"x12" Floor Tile	Lower Level – Room 2	None Detected	200 sq/ft (total)
KEY-22	Black Mastic Beneath Blue 12"x12"s	Lower Level – Room 2	2% Chrysotile	(Combined Total) 16,900 sq/ft
KEY-23	Gray with Red Streaks 12"x12" Floor Tile	Lower Level – Large Refrigeration/Mechanical Room	4% Chrysotile	200 sq/ft
KEY-24	Black Mastic Beneath Gray with Red Streaks 12"x12" Floor Tile	Lower Level – Large Refrigeration/Mechanical Room	6% Chrysotile	(Combined Total) 16,900 sq/ft
KEY-25	Dark Brown with Red Streaks 9"x9" Floor Tile	Lower Level - Kitchen	5% Chrysotile	500 sq/ft
KEY-26	Black Mastic Beneath Dark Brown with Red Streaks 9"x9" Floor Tile	Lower Level - Kitchen	None Detected	(Negative Black Mastic Total) 6,500 sq/ft
KEY-27	Gray Vent Patch	Lower Level – Boiler Room	None Detected	2 sq/ft
KEY-28	Gray Electrical Panel/Board	Lower Level – Boiler Room	None Detected	5 sq/ft
KEY-29	Light Beige 12"x12" Floor Tile	Lower Level – Letz center	None Detected	1,500 sq/ft
KEY-30	Yellow Mastic Beneath Light Beige 12"x12"s	Lower Level – Letz center	None Detected	1,500 sq/ft
KEY-31	White 1'x1' Ceiling Tiles	Lower Level – School hall	None Detected	5,000 sq/ft
KEY-32	White 1'x1' Ceiling Tiles	Lower Level – School hall	None Detected	5,000 sq/ft
KEY-33	White 1'x1' Ceiling Tiles	Lower Level – School hall	None Detected	5,000 sq/ft
KEY-34	Brown Glue Pads Above 1'x1' Tiles	Lower Level – School hall	None Detected	5,000 sq/ft
KEY-35	Brown Glue Pads Above 1'x1' Tiles	Lower Level – School hall	None Detected	5,000 sq/ft
KEY-36	Brown Glue Pads Above 1'x1' Tiles	Lower Level – School hall	None Detected	5,000 sq/ft
KEY-37	2'x2' White Ceiling Tile	Lower Level – Letz center	None Detected	1,500 sq/ft
KEY-38	1'x1' White Ceiling Tile with Divots	Lower Level – Room 1	None Detected	1,250 sq/ft
KEY38 A	Brown Glue Pad Above 1'x1' Tiles	Lower Level – Room 1		1,250 sq/ft
KEY-39	Multicolor Linoleum on Shelving	Lower Level – Kitchen	None Detected	200 sq/ft
KEY-40	Brown Ceramic Tile	Stairwells	None Detected	2,500 sq/ft

ID	MATERIAL SAMPLED	LOCATION	% ASBESTOS	ESTIMATED TOTAL QUANTITY OF MATERIAL IN BUILDING
KEY-41	Grout Associated with ceramic Tile	Stairwells	None Detected	2,500 sq/ft
KEY-42	Green Terrazzo	Hallways	None Detected	1,500 sq/ft
KEY-43	Beige Terrazzo	Hallways	None Detected	5,000 sq/ft
KEY-44	Beige Ceramic Wall Tile	Hallways	None Detected	20,000 sq/ft
KEY-45	Brown Radiator Covering	1 <sup>st</sup> Floor – Room 104	None Detected	5 sq/ft
KEY-46	Gray Vinyl Baseboard	1 <sup>st</sup> Floor – Room 104	None Detected	200 l/ft
KEY-47	Mastic Associated with Baseboard	1 <sup>st</sup> Floor – Room 104	None Detected	200 l/ft
KEY-48	Gray Vinyl Baseboard	Lower Level – Room 2	None Detected	200 l/ft
KEY-49	Mastic Associated with Baseboard	Lower Level – Room 2	None Detected	200 l/ft
KEY-50	2'x2' White Ceiling Tile	1 <sup>st</sup> Floor – Room 103	None Detected	1,250 sq/ft
KEY-51	Gray 1'x1' Ceiling Tile	1 <sup>st</sup> Floor – Room 101	None Detected	5,000 sq/ft
KEY-52	Gray 1'x1' Ceiling Tile	1 <sup>st</sup> Floor – Room 102	None Detected	5,000 sq/ft
KEY-53	Gray 1'x1' Ceiling Tile	1 <sup>st</sup> Floor – Room 103	None Detected	5,000 sq/ft
KEY-54	Brown Glue Pad Above Tile	1 <sup>st</sup> Floor – Room 101	None Detected	5,000 sq/ft
KEY-55	Brown Glue Pad Above Tile	1 <sup>st</sup> Floor – Room 102	None Detected	5,000 sq/ft
KEY-56	Brown Glue Pad Above Tile	1 <sup>st</sup> Floor – Room 103	None Detected	5,000 sq/ft
KEY-57	Light Brown 9"x9" Floor Tile	Lower Level – Room 2	5% Chrysotile	(Combined Total) 7,000 sq/ft
KEY-58	Light Brown 9"x9" Floor Tile	1 <sup>st</sup> Floor – Room 104	5% Chrysotile	(Combined Total) 7,000 sq/ft
KEY-59	Light Brown 9"x9" Floor Tile	2 <sup>nd</sup> Floor – East Center Room	5% Chrysotile	(Combined Total) 7,000 sq/ft
KEY-60	Black Mastic Beneath Light Brown 9"x9"s	Lower Level – Room 2	5% Chrysotile	(Combined Total) 16,900 sq/ft
KEY-61	Black Mastic Beneath Light Brown 9"x9"s	1 <sup>st</sup> Floor – Room 104	5% Chrysotile	(Combined Total) 16,900 sq/ft

ID	MATERIAL SAMPLED	LOCATION	% ASBESTOS	ESTIMATED TOTAL QUANTITY OF MATERIAL IN BUILDING
KEY-62	Black Mastic Beneath Light Brown 9"x9"s	2 <sup>nd</sup> Floor – East Center Room	5% Chrysotile	(Combined Total) 16,900 sq/ft
KEY-63	Yellow Mastic Above Light Brown 9"x9"s	Lower Level – Room 2	None Detected	(Combined Total) 9,000 sq/ft
KEY-64	Yellow Mastic Above Light Brown 9"x9"s	1 <sup>st</sup> Floor – Room 104	None Detected	(Combined Total) 9,000 sq/ft
KEY-65	Yellow Mastic Above Light Brown 9"x9"s	2 <sup>nd</sup> Floor – Center Room	None Detected	(Combined Total) 9,000 sq/ft
KEY-66	Brown 9"x9" Floor Tile	Lower Level – Room 2	5% Chrysotile	(Combined Total) 7,000 sq/ft
KEY-67	Brown 9"x9" Floor Tile	1 <sup>st</sup> Floor – Room 104	5% Chrysotile	(Combined Total) 7,000 sq/ft
KEY-68	Brown 9"x9" Floor Tile	2 <sup>nd</sup> Floor – East Center Room	5% Chrysotile	(Combined Total) 7,000 sq/ft
KEY-69	Black Mastic Beneath Brown 9"x9"s	Lower Level – Room 2	5% Chrysotile	(Combined Total) 16,900 sq/ft
KEY-70	Black Mastic Beneath Brown 9"x9"s	1 <sup>st</sup> Floor – Room 104	5% Chrysotile	(Combined Total) 16,900 sq/ft
KEY-71	Black Mastic Beneath Brown 9"x9"s	2 <sup>nd</sup> Floor Center Room	5% Chrysotile	(Combined Total) 16,900 sq/ft
KEY-72	Yellow Mastic Above Brown 9"x9"s	Lower Level – Room 2	None Detected	(Combined Total) 9,000 sq/ft
KEY-73	Yellow Mastic Above Brown 9"x9"s	1 <sup>st</sup> Floor – Room 104	None Detected	(Combined Total) 9,000 sq/ft
KEY-74	Green 9"x9" Floor Tile	1 <sup>st</sup> Floor – Room 103	5% Chrysotile	1,500 sq/ft
KEY-75	Black Mastic Beneath Tiles	1 <sup>st</sup> Floor – Room 103	8% Chrysotile	(Combined Total) 16,900 sq/ft
KEY-76	2'x4' White Ceiling Tile	1 <sup>st</sup> Floor Hallway	None Detected	2,000 sq/ft
KEY-77	2'x4' White Ceiling Tile	1 <sup>st</sup> Floor Hallway	None Detected	2,000 sq/ft
KEY-78	2'x4' White Ceiling Tile	1 <sup>st</sup> Floor Hallway	None Detected	2,000 sq/ft
KEY-79	Blue Ceramic Tile	2 <sup>nd</sup> Floor – Bathroom	None Detected	400 sq/ft
KEY-80	Hard Brown Vinyl Baseboard	2 <sup>nd</sup> Floor – West End	5% Chrysotile	1,500 l/ft
KEY-81	Hard Brown Vinyl Baseboard	2 <sup>nd</sup> Floor – Center	5% Chrysotile	1,500 l/ft
KEY-82	Hard Brown Vinyl Baseboard	2 <sup>nd</sup> Floor – South Hallway	5% Chrysotile	1,500 l/ft

ID	MATERIAL SAMPLED	LOCATION	% ASBESTOS	ESTIMATED TOTAL QUANTITY OF MATERIAL IN BUILDING
KEY-83	Mastic Behind Baseboards	2 <sup>nd</sup> Floor – West End	None Detected	1,500 l/ft
KEY-84	Mastic Behind Baseboards	2 <sup>nd</sup> Floor – Center	None Detected	1,500 l/ft
KEY-85	Mastic Behind Baseboards	2 <sup>nd</sup> Floor – South Hallway	None Detected	1,500 l/ft
KEY-86	Light Green 9"x9" Floor Tile	2 <sup>nd</sup> Floor – Room Adjoining Kitchen	5% Chrysotile	300 sq/ft
KEY-87	Black Mastic Beneath Light Green 9"x9"s	2 <sup>nd</sup> Floor – Room Adjoining Kitchen	8% Chrysotile	(Combined Total) 16,900 sq/ft
KEY-88	Dark Gray 9"x9" Floor Tile	2 <sup>nd</sup> Floor – Room Adjoining Kitchen	5% Chrysotile	300 sq/ft
KEY-89	Black Mastic Beneath Dark Gray 9"x9"s	2 <sup>nd</sup> Floor – Room Adjoining Kitchen	8% Chrysotile	(Combined Total) 16,900 sq/ft
KEY-90	Beige Linoleum	2 <sup>nd</sup> Floor - Kitchen	None Detected	350 sq/ft
KEY-90A	Mastic Beneath Linoleum	2 <sup>nd</sup> Floor - Kitchen	None Detected	350 sq/ft
KEY-91	Black 9"x9" Floor Tile	2 <sup>nd</sup> Floor – South Center Room	5% Chrysotile	400 sq/ft
KEY-92	Black Mastic Beneath Black 9"x9"s	2 <sup>nd</sup> Floor – South Center Room	8% Chrysotile	(Combined Total) 16,900 sq/ft
KEY-93	Black Vinyl Baseboard	2 <sup>nd</sup> Floor – Kitchen	None Detected	100 l/ft
KEY-94	Mastic Behind Black Vinyl Baseboard	2 <sup>nd</sup> Floor – Kitchen	None Detected	100 l/ft
KEY-95	Dark Yellow Mastic on Wood	2 <sup>nd</sup> Floor – East Classrooms	None Detected	4,000 sq/ft
KEY-96	Dark Yellow Mastic on Wood	2 <sup>nd</sup> Floor – East Classrooms	None Detected	4,000 sq/ft
KEY-97	Dark Yellow Mastic on Wood	2 <sup>nd</sup> Floor – East Classrooms	None Detected	4,000 sq/ft
KEY-98	Green Chalkboard	Classrooms	None Detected	2,000 sq/ft
KEY-99	TSI on Piping	Lower Level – Beneath East Stairwell	25% Chrysotile	(Combined Total) 2,750 l/f
KEY-100	TSI on Piping	1 <sup>st</sup> Floor – West End	60% Chrysotile	(Combined Total) 2,750 l/f
KEY-101	TSI on Piping	2 <sup>nd</sup> Floor – Bathroom Pipe Chase	60% Chrysotile	(Combined Total) 2,750 l/f
KEY-102	Gray Elbow Fittings	Lower Level – East End	60% Chrysotile	(Combined Total) 100 Fittings



ID	MATERIAL SAMPLED	LOCATION	% ASBESTOS	ESTIMATED TOTAL QUANTITY OF MATERIAL IN BUILDING
KEY-103	Gray Elbow Fittings	1 <sup>st</sup> Floor – Room 103	60% Chrysotile	(Combined Total) 100 Fittings
KEY-104	Gray Elbow Fittings	1 <sup>st</sup> Floor – Room 104	60% Chrysotile	(Combined Total) 100 Fittings
KEY-105	White TSI on Piping	Lower Level School Hall – Along Walls	60% Chrysotile	(Combined Total) 2,750 l/f
KEY-106	Brown Vinyl Baseboard	Lower Level – School hall	None Detected	200 l/ft
KEY-107	Mastic Behind Brown Baseboards	Lower Level – School hall	None Detected	200 l/ft
KEY-108	Black Rubber Roofing Field	Roof – East Side	None Detected	5,000 sq/ft
KEY-109	Black Rubber Roofing Field	Roof – East Side	None Detected	5,000 sq/ft
KEY-110	Black Rubber Roofing Field	Roof – East Side	None Detected	5,000 sq/ft
KEY-111	Mastic Beneath Roofing Field	Roof – East Side	3% Chrysotile	(Combined Total) 5,000 sq/ft
KEY-112	Mastic Beneath Roofing Field	Roof – East Side	3% Chrysotile	(Combined Total) 5,000 sq/ft
KEY-113	Mastic Beneath Roofing Field	Roof – East Side	3% Chrysotile	(Combined Total) 5,000 sq/ft
KEY-114	Silver Paint on Vent Exhaust	Roof – East Side	None Detected	200 sq/ft
KEY-115	Black Flashing Along Parapets	Roof – East Side	None Detected	400 sq/ft
KEY-116	Asphalt Roofing Field Core	Roof – West Side	None Detected	8,000 sq/ft
KEY-117	Asphalt Roofing Field Core	Roof – West Side	None Detected	8,000 sq/ft
KEY-118	Asphalt Roofing Field Core	Roof – West Side	None Detected	8,000 sq/ft
KEY-119	Silver Flashing on Vents	Roof – West Side	None Detected	500 sq/ft
KEY-120	Silver Flashing on Vents	Roof – West Side	None Detected	500 sq/ft
KEY-121	Silver Flashing on Vents	Roof – West Side	None Detected	500 sq/ft
KEY-122	Brick	Exterior Walls	None Detected	30,000 sq/ft
KEY-123	Brick	Exterior Walls	None Detected	30,000 sq/ft

ID	MATERIAL SAMPLED	LOCATION	% ASBESTOS	ESTIMATED TOTAL QUANTITY OF MATERIAL IN BUILDING
KEY-124	Brick	Exterior Walls	None Detected	30,000 sq/ft
KEY-125	Associated Brick Mortar	Exterior Walls	None Detected	30,000 sq/ft
KEY-126	Associated Brick Mortar	Exterior Walls	None Detected	30,000 sq/ft
KEY-127	Associated Brick Mortar	Exterior Walls	None Detected	30,000 sq/ft
KEY-128	Gray/White Window Glazing	Throughout Exterior Windows	3% Chrysotile	(Combined Total) 2,000 l/ft
KEY-129	Gray/White Window Glazing	Throughout Exterior Windows	<1% Chrysotile	(Combined Total) 2,000 l/ft
KEY-130	Gray/White Window Glazing	Throughout Exterior Windows	<1% Chrysotile	(Combined Total) 2,000 l/ft
KEY-131	Flat White 1'x1' Ceiling Tile	Lower Level – Room 2 Bathroom	None Detected	25 sq/ft
KEY-132	Brown Glue Pad Above Tile	Lower Level – Room 2 Bathroom	None Detected	25 sq/ft
KEY-133	Hard Black Vinyl Baseboard	Lower Level – Kitchen	5% Chrysotile	150 l/ft
KEY-134	Black Mastic Behind Baseboard	Lower Level – Kitchen	4% Chrysotile	150 l/ft
KEY-135	Light Brown 9"x9" Floor Tile	2 <sup>nd</sup> Floor – Top of West Stairwell	5% Chrysotile	(Combined Total) 7,000 sq/ft
KEY-136	Black Mastic Beneath Tile	2 <sup>nd</sup> Floor – Top of West Stairwell	4% Chrysotile	(Combined Total) 16,900 sq/ft
KEY-137	White Patterned Linoleum	2 <sup>nd</sup> Floor Kitchen – Beneath Sink	15% Chrysotile	5 sq/ft
KEY-138	7"x7" Gray Ceiling Tile	1 <sup>st</sup> Floor – Principles Office	None Detected	100 sq/ft
KEY-139	Brown Glue Pads Above Gray Tile	1 <sup>st</sup> Floor – Principles Office	2% Chrysotile	100 sq/ft

Additional Sampling Performed

SAMPLE ID	MATERIAL SAMPLED	LOCATION	% ASBESTOS	ESTIMATED QUANTITY
KEY-01	Beige Wall Mastic Behind Wall Covering	Lower Level – School hall	None Detected	1,000 sq/ft
KEY-02	White Boiler Door Sealant/Fabric	Lower Level – On Boilers	None Detected	10 sq/ft
KEY-03	Clear Boiler Door Caulk	Lower Level – On Boilers	None Detected	5 sq/ft
KEY-04	Beige Wall Mastic Behind Wall Covering	Lower Level – East Hallway	None Detected	1,000 sq/ft
KEY-05	2" Brown Baseboard	Lower Level – Letz center	None Detected	150 sq/ft
KEY-06	Beige Mastic Behind Baseboard	Lower Level – Letz center	None Detected	150 sq/ft

SAMPLE ID	MATERIAL SAMPLED	LOCATION	% ASBESTOS	ESTIMATED QUANTITY
KEY-07	Adhesive Between Wooden Floorboards	Lower Level and 2 <sup>nd</sup> Floor (East End)	None Detected	1,000 sq/ft
KEY-08	Black Tar Paper/Vapor Barrier Beneath Floorboards	Ground and 2 <sup>nd</sup> Floor (East End)	None Detected	5,000 sq/ft
KEY-09	Yellow Ceramic Wall Tiles	Lower Level – Bathrooms	None Detected	1,500 sq/ft
KEY-10	White Grout Associated with Tiles	Lower Level – Bathrooms	None Detected	1,500 sq/ft
KEY-11	Brown Mastic Behind Tiles	Lower Level – Bathrooms	None Detected	1,500 sq/ft
KEY-12	Gray Toilet Caulk	Bathrooms Throughout	None Detected	100 l/ft
KEY-13	Gray Sink Undercoat	Lower Level – Letz center	None Detected	3 sq/ft
KEY-14	Dark Brown Mastic Behind Corkboards	Classrooms	None Detected	750 sq/ft
KEY-15	Gray Paperboard Covering Chalkboard	1 <sup>st</sup> Floor – Room 109	None Detected	10 sq/ft
KEY-16	Green Terrazzo	1 <sup>st</sup> Floor - Hallway	None Detected	1,500 sq/ft
KEY-17	White Drywall	1 <sup>st</sup> Floor – Behind Chalkboards	None Detected	(Combined Total) 4,000 sq/ft
KEY-18	White Drywall	1 <sup>st</sup> Floor – Behind Drinking Fountain	None Detected	(Combined Total) 4,000 sq/ft
KEY-19	White Drywall	2 <sup>nd</sup> Floor – South Center Room	None Detected	(Combined Total) 4,000 sq/ft
KEY-20	White Drywall Compound	2 <sup>nd</sup> Floor – East End	None Detected	(Combined Total) 1,000 sq/ft
KEY-20A	White Drywall Texture	2 <sup>nd</sup> Floor – East End	None Detected	(Combined Total) 1,000 sq/ft
KEY-21	White Drywall Compound	2 <sup>nd</sup> Floor -South Center Room	None Detected	(Combined Total) 1,000 sq/ft
KEY-22	White Drywall Compound	2 <sup>nd</sup> Floor – S.W. Corner Room	None Detected	(Combined Total) 1,000 sq/ft
KEY22A	White Drywall Texture	2 <sup>nd</sup> Floor – S.W. Corner Room		(Combined Total) 1,000 sq/ft
KEY-23	Gray/Green Wall Mastic Behind White Plastic Wall Covering	2 <sup>nd</sup> Floor – Center Room Near Bathroom	None Detected	10 sq/ft
KEY-24	Caulking on Bathtub/Showers	2 <sup>nd</sup> Floor - Bathroom	None Detected	10 l/ft
KEY-25	Brown Caulking on Windows (Covered with metal)	Exterior – E. Side	None Detected	250 l/ft
KEY-26	Gray/Beige Door Caulk	Exterior – East Entrance	None Detected	100 l/ft
KEY-27	Gray Door Caulk	Exterior – 2 <sup>nd</sup> Floor Stair Landing	None Detected	15 l/ft
KEY-28	Brown Caulking on Windows (Covered, at base of building)	Exterior – S.E. Side	None Detected	100 l/ft
KEY-29	Gray Caulk – Vertical Seam	Exterior – S.E. Side	<1% Chrysotile	50 l/ft
KEY-30	Brown Caulking on Windows (Covered with Metal)	Exterior – N.E. Side	None Detected	250 l/ft
KEY-31	Beige Window Caulk	Exterior Windows – Throughout	None Detected	2,000 l/ft
KEY-31A	Gray Window Caulk	Exterior Windows – Throughout	3% Chrysotile	(Combined Total) 2,000 l/ft
KEY-32	Beige Window Caulk	Exterior Windows – Throughout	None Detected	2,000 l/ft
KEY32A	Gray Window Caulk	Exterior Windows – Throughout	3% Chrysotile	(Combined Total) 2,000 l/ft
KEY-33	Beige Window Caulk	Exterior Windows – Throughout	None Detected	2,000 l/ft
KEY-33A	Gray Window Caulk	Exterior Windows – Throughout	3% Chrysotile	(Combined Total) 2,000 l/ft
KEY-34	White Patch Caulk	Exterior – West Side	None Detected	50 l/ft

### **5.0 Conclusions**

As the results of this survey indicated the presence of ACM in connection with the subject structure, Keystone recommends that the identified ACM be removed and disposed of by a Wisconsin-licensed asbestos abatement contractor prior to any renovation or demolition activity that will disturb the asbestos containing materials identified.

This asbestos survey was conducted in a manner consistent with the level of care and skill ordinarily exercised by members of the profession currently practicing under similar conditions in the same locale. The results, findings, conclusions and recommendations expressed in this report are based on conditions observed during our survey of the building. The information contained in this report is relevant to the date on which this survey was performed and should not be relied upon to represent conditions at a later date. This report is not a bidding document. Contractors or consultants reviewing this report must draw their own conclusions regarding further investigation or remediation deemed necessary.

If you have any questions, comments, or require additional services, feel free to contact us at (608) 480-8822, or by e-mail at [contact@keystone-env.com](mailto:contact@keystone-env.com).

Sincerely,

Keystone Environmental LLC.

A handwritten signature in black ink that reads "T. Ryckman". The signature is written in a cursive, slightly slanted style.

Tucker Ryckman  
Owner

### **Attachments**

Attachment A – Keystone Inspector Certifications  
Attachment B – Analytical Results and Lab Certifications  
Attachment C – Floorplans and Photos

**Attachment A**

**Keystone Inspector Certifications**

# KEYSTONE ENVIRONMENTAL LLC

4705 FERRIS AVE, MADISON, WI 53716-1413 | (231) 651-0791

is a

## Certified Asbestos Company DHS ID 2542250

under Wisconsin Admin. Code ch. DHS 159.

Issued Date: September 21, 2022  
Expiration Date: August 20, 2024



*Miriam Hasan*

Miriam Hasan

Supervisor, Lead & Asbestos Certification Unit

Wisconsin Department of Health Services

1 W Wilson Street

Madison, WI 53701

608-261-6876 | [dhsasbestoslead@dhs.wisconsin.gov](mailto:dhsasbestoslead@dhs.wisconsin.gov)

**Attachment B**

**Analytical Results and Lab Certifications**



**The Identification Specialists**

Analysis Report  
prepared for  
Keystone Environmental, LLC

**Report Date: 7/21/2023**

**Project Name: Manitowoc**

**SanAir ID#: 23038139**



NVLAP LAB CODE 200870-0

10501 Trade Court | North Chesterfield, Virginia 23236  
888.895.1177 | 804.897.1177 | fax: 804.897.0070 | [IAQ@SanAir.com](mailto:IAQ@SanAir.com) | [SanAir.com](http://SanAir.com)





SanAir ID Number  
23038139  
FINAL REPORT  
7/21/2023 3:14:01 PM

**Name:** Keystone Environmental, LLC  
**Address:** 4705 Ferris Ave  
Madison, WI 53716  
**Phone:** 231-651-0791

**Project Number:**  
**P.O. Number:**  
**Project Name:** Manitowoc  
**Collected Date:** 7/11/2023 - 7/12/2023  
**Received Date:** 7/14/2023 10:35:00 AM

Dear Tucker Ryckman,

We at SanAir would like to thank you for the work you recently submitted. The 139 sample(s) were received on Friday, July 14, 2023 via UPS. The final report(s) is enclosed for the following sample(s): KEY-01, KEY-02, KEY-03, KEY-04, KEY-05, KEY-06, KEY-07, KEY-08, KEY-09, KEY-10, KEY-11, KEY-12, KEY-13, KEY-14, KEY-15, KEY-16, KEY-17, KEY-18, KEY-19, KEY-20, KEY-21, KEY-22, KEY-23, KEY-24, KEY-25, KEY-26, KEY-27, KEY-28, KEY-29, KEY-30, KEY-31, KEY-32, KEY-33, KEY-34, KEY-35, KEY-36, KEY-37, KEY-38, KEY-39, KEY-40, KEY-41, KEY-42, KEY-43, KEY-44, KEY-45, KEY-46, KEY-47, KEY-48, KEY-49, KEY-50, KEY-51, KEY-52, KEY-53, KEY-54, KEY-55, KEY-56, KEY-57, KEY-58, KEY-59, KEY-60, KEY-61, KEY-62, KEY-63, KEY-64, KEY-65, KEY-66, KEY-67, KEY-68, KEY-69, KEY-70, KEY-71, KEY-72, KEY-73, KEY-74, KEY-75, KEY-76, KEY-77, KEY-78, KEY-79, KEY-80, KEY-81, KEY-82, KEY-83, KEY-84, KEY-85, KEY-86, KEY-87, KEY-88, KEY-89, KEY-90, KEY-91, KEY-92, KEY-93, KEY-94, KEY-95, KEY-96, KEY-97, KEY-98, KEY-99, KEY-100, KEY-101, KEY-102, KEY-103, KEY-104, KEY-105, KEY-106, KEY-107, KEY-108, KEY-109, KEY-110, KEY-111, KEY-112, KEY-113, KEY-114, KEY-115, KEY-116, KEY-117, KEY-118, KEY-119, KEY-120, KEY-121, KEY-122, KEY-123, KEY-124, KEY-125, KEY-126, KEY-127, KEY-128, KEY-129, KEY-130, KEY-131, KEY-132, KEY-133, KEY-134, KEY-135, KEY-136, KEY-137, KEY-138, KEY-139.

These results only pertain to this job and should not be used in the interpretation of any other job. This report is only complete in its entirety. Refer to the listing below of the pages included in a complete final report.

Sincerely,

Sandra Sobrino  
Asbestos & Materials Laboratory Manager  
SanAir Technologies Laboratory

Final Report Includes:

- Cover Letter
- Analysis Pages
- Disclaimers and Additional Information

Sample conditions:

- 139 samples in Good condition.



SanAir ID Number  
**23038139**  
 FINAL REPORT  
 7/21/2023 3:14:01 PM

**Name:** Keystone Environmental, LLC  
**Address:** 4705 Ferris Ave  
 Madison, WI 53716  
**Phone:** 231-651-0791

**Project Number:**  
**P.O. Number:**  
**Project Name:** Manitowoc  
**Collected Date:** 7/11/2023 - 7/12/2023  
**Received Date:** 7/14/2023 10:35:00 AM

Analyst: Sanchez, Meivis | Childress, Susan | Moore, Brandi | Drakes, Renaldo

### Asbestos Bulk PLM EPA 600/R-93/116

SanAir ID / Description	Stereoscopic		Components		Asbestos Fibers
	Appearance	% Fibrous	% Non-fibrous		
KEY-01 / 23038139-001 Plaster Topcoat - Lower Level Room 2	White Non-Fibrous Homogeneous		100% Other		None Detected
KEY-02 / 23038139-002 Plaster Topcoat - Lower Level Mechanical Closet	White Non-Fibrous Homogeneous		100% Other		None Detected
KEY-03 / 23038139-003 Plaster Topcoat - 1st Floor - Room 101	White Non-Fibrous Homogeneous		100% Other		None Detected
KEY-04 / 23038139-004 Plaster Topcoat - 1st Floor - Hallway	White Non-Fibrous Homogeneous		100% Other		None Detected
KEY-05 / 23038139-005 Plaster Topcoat - 1st Floor - Room 107	White Non-Fibrous Homogeneous		100% Other		None Detected
KEY-06 / 23038139-006 Plaster Topcoat - 2nd Floor - West Stairwell	White Non-Fibrous Homogeneous		100% Other		None Detected
KEY-07 / 23038139-007 Plaster Topcoat - 2nd Floor - Near Kitchen	White Non-Fibrous Homogeneous		100% Other		None Detected
KEY-08 / 23038139-008 Plaster Bottomcoat - Lower Level Room 2	Gray Non-Fibrous Homogeneous		100% Other		None Detected
KEY-09 / 23038139-009 Plaster Bottomcoat - Lower Level Mechanical Closet	Gray Non-Fibrous Homogeneous		100% Other		None Detected
KEY-10 / 23038139-010 Plaster Bottomcoat - 1st Floor - Room 101	Gray Non-Fibrous Homogeneous		100% Other		None Detected

Analyst: *Meivis Sanchez*

Approved Signatory: *Johnathan Wilson*

Analysis Date: 7/21/2023

Date: 7/21/2023



SanAir ID Number  
**23038139**  
 FINAL REPORT  
 7/21/2023 3:14:01 PM

**Name:** Keystone Environmental, LLC  
**Address:** 4705 Ferris Ave  
 Madison, WI 53716  
**Phone:** 231-651-0791

**Project Number:**  
**P.O. Number:**  
**Project Name:** Manitowoc  
**Collected Date:** 7/11/2023 - 7/12/2023  
**Received Date:** 7/14/2023 10:35:00 AM

Analyst: Sanchez, Meivis | Childress, Susan | Moore, Brandi | Drakes, Renaldo

### Asbestos Bulk PLM EPA 600/R-93/116

SanAir ID / Description	Stereoscopic		Components		Asbestos Fibers
	Appearance	% Fibrous	% Non-fibrous		
KEY-11 / 23038139-011 Plaster Bottomcoat - 1st Floor - Hallway	Gray Non-Fibrous Homogeneous		100% Other		None Detected
KEY-12 / 23038139-012 Plaster Bottomcoat - 1st Floor - Room 107	Gray Non-Fibrous Homogeneous		100% Other		None Detected
KEY-13 / 23038139-013 Plaster Bottomcoat - 2nd Floor - West Stairwell	Gray Non-Fibrous Homogeneous		100% Other		None Detected
KEY-14 / 23038139-014 Plaster Bottomcoat - 2nd Floor - Near Kitchen	Gray Non-Fibrous Homogeneous		100% Other		None Detected
KEY-15 / 23038139-015 12"x12" Floor Tile - Lower Level Center Area	Beige Non-Fibrous Homogeneous	2% Cellulose	98% Other		None Detected
KEY-16 / 23038139-016 12"x12" Floor Tile - Lower Level Center Area	Beige Fibrous Homogeneous		100% Other		None Detected
KEY-17 / 23038139-017 12"x12" Floor Tile - Lower Level Center Area	Beige Non-Fibrous Homogeneous		100% Other		None Detected
KEY-18 / 23038139-018 Mastic Beneath Tile - Lower Level Center Area	Black Non-Fibrous Homogeneous		100% Other		None Detected
KEY-19 / 23038139-019 Mastic Beneath Tile - Lower Level Center Area	Black Non-Fibrous Homogeneous		100% Other		None Detected
KEY-20 / 23038139-020 Mastic Beneath Tile - Lower Level Center Area	Black Non-Fibrous Homogeneous		100% Other		None Detected

Analyst: *Meivis Sanchez*

Approved Signatory: *Johnathan Wilson*

Analysis Date: 7/21/2023

Date: 7/21/2023



SanAir ID Number  
**23038139**  
 FINAL REPORT  
 7/21/2023 3:14:01 PM

**Name:** Keystone Environmental, LLC  
**Address:** 4705 Ferris Ave  
 Madison, WI 53716  
**Phone:** 231-651-0791

**Project Number:**  
**P.O. Number:**  
**Project Name:** Manitowoc  
**Collected Date:** 7/11/2023 - 7/12/2023  
**Received Date:** 7/14/2023 10:35:00 AM

Analyst: Sanchez, Meivis | Childress, Susan | Moore, Brandi | Drakes, Renaldo

### Asbestos Bulk PLM EPA 600/R-93/116

SanAir ID / Description	Stereoscopic		Components		Asbestos Fibers
	Appearance	% Fibrous	% Non-fibrous		
KEY-21 / 23038139-021 12"x12" Floor Tile - Lower Level Room 2	Blue Non-Fibrous Homogeneous		100% Other		None Detected
KEY-22 / 23038139-022 Mastic Beneath Tile - Lower Level Room 2	Black Non-Fibrous Homogeneous		98% Other		2% Chrysotile
KEY-23 / 23038139-023 12"x12" - Lower Level Mech Room	Various Non-Fibrous Homogeneous		96% Other		4% Chrysotile
KEY-24 / 23038139-024 Mastic Beneath Tile - Lower Level Mech Room	Black Non-Fibrous Homogeneous		94% Other		6% Chrysotile
KEY-25 / 23038139-025 9"x9" - Lower Level Kitchen	Brown Non-Fibrous Homogeneous		95% Other		5% Chrysotile
KEY-26 / 23038139-026 Mastic Beneath Tile - Lower Level Kitchen	Black Non-Fibrous Homogeneous		100% Other		None Detected
KEY-27 / 23038139-027 Vent Patch - Lower Level Boiler Room	Gray Non-Fibrous Homogeneous		100% Other		None Detected
KEY-28 / 23038139-028 Electrical Panel Board - Lower Level Boiler Room	Gray Fibrous Homogeneous	80% Cellulose	20% Other		None Detected
KEY-29 / 23038139-029 12"x12" Floor Tile - Lower Level - S.E. Corner Room	Beige Non-Fibrous Homogeneous		100% Other		None Detected
KEY-30 / 23038139-030 Mastic Beneath Tile - Lower Level - S.E. Corner Room	Yellow Non-Fibrous Homogeneous		100% Other		None Detected

Analyst: *Meivis Sanchez*

Approved Signatory: *Johnathan Wilson*

Analysis Date: 7/21/2023

Date: 7/21/2023



SanAir ID Number  
**23038139**  
 FINAL REPORT  
 7/21/2023 3:14:01 PM

**Name:** Keystone Environmental, LLC  
**Address:** 4705 Ferris Ave  
 Madison, WI 53716  
**Phone:** 231-651-0791

**Project Number:**  
**P.O. Number:**  
**Project Name:** Manitowoc  
**Collected Date:** 7/11/2023 - 7/12/2023  
**Received Date:** 7/14/2023 10:35:00 AM

Analyst: Sanchez, Meivis | Childress, Susan | Moore, Brandi | Drakes, Renaldo

### Asbestos Bulk PLM EPA 600/R-93/116

SanAir ID / Description	Stereoscopic	Components		Asbestos Fibers
	Appearance	% Fibrous	% Non-fibrous	
KEY-31 / 23038139-031 1'x1' Ceiling Tile W Pinholes - Lower Level Center Area	White Fibrous Homogeneous	85% Cellulose	15% Other	None Detected
KEY-32 / 23038139-032 1'x1' Ceiling Tile W Pinholes - Lower Level Center Area	White Fibrous Homogeneous	85% Cellulose	15% Other	None Detected
KEY-33 / 23038139-033 1'x1' Ceiling Tile W Pinholes - Lower Level Center Area	White Fibrous Homogeneous	85% Cellulose	15% Other	None Detected
KEY-34 / 23038139-034 Glue Pads Above Tile - Lower Level Center Area	Brown Non-Fibrous Homogeneous		100% Other	None Detected
KEY-35 / 23038139-035 Glue Pads Above Tile - Lower Level Center Area	Brown Non-Fibrous Homogeneous		100% Other	None Detected
KEY-36 / 23038139-036 Glue Pads Above Tile - Lower Level Center Area	Brown Non-Fibrous Homogeneous		100% Other	None Detected
KEY-37 / 23038139-037 2'x2' Ceiling Tile - Lower Level - S.E. Corner Room	White Fibrous Homogeneous	55% Cellulose 15% Glass	30% Other	None Detected
KEY-38 / 23038139-038 1'x1' Ceiling Tile With Divots - Lower Level Room 1, Ceiling Tile	Brown Fibrous Homogeneous	85% Cellulose	15% Other	None Detected
KEY-38 / 23038139-038 1'x1' Ceiling Tile With Divots - Lower Level Room 1, Mastic	Brown Non-Fibrous Homogeneous		100% Other	None Detected
KEY-39 / 23038139-039 Linoleum On Shelving - Kitchen	Various Non-Fibrous Homogeneous	35% Cellulose	65% Other	None Detected

Analyst: *Meivis Sanchez*

Approved Signatory: *Johnathan Wilson*

Analysis Date: 7/21/2023

Date: 7/21/2023



SanAir ID Number  
**23038139**  
 FINAL REPORT  
 7/21/2023 3:14:01 PM

**Name:** Keystone Environmental, LLC  
**Address:** 4705 Ferris Ave  
 Madison, WI 53716  
**Phone:** 231-651-0791

**Project Number:**  
**P.O. Number:**  
**Project Name:** Manitowoc  
**Collected Date:** 7/11/2023 - 7/12/2023  
**Received Date:** 7/14/2023 10:35:00 AM

Analyst: Sanchez, Meivis | Childress, Susan | Moore, Brandi | Drakes, Renaldo

### Asbestos Bulk PLM EPA 600/R-93/116

SanAir ID / Description	Stereoscopic		Components		Asbestos Fibers
	Appearance	% Fibrous	% Non-fibrous		
KEY-40 / 23038139-040 Ceramic Tile - In Stairwells	Brown Non-Fibrous Homogeneous		100% Other		None Detected
KEY-41 / 23038139-041 Associated Grout - In Stairwells	Grey Non-Fibrous Homogeneous		100% Other		None Detected
KEY-42 / 23038139-042 Terrazo - Hallways	Green Non-Fibrous Homogeneous		100% Other		None Detected
KEY-43 / 23038139-043 Terrazo - Hallways	Beige Non-Fibrous Homogeneous		100% Other		None Detected
KEY-44 / 23038139-044 Ceramic Wall Tile	Cream Non-Fibrous Homogeneous		100% Other		None Detected
KEY-45 / 23038139-045 Radiator Covering - Hallways	Brown Non-Fibrous Heterogeneous	35% Cellulose	65% Other		None Detected
KEY-46 / 23038139-046 Vinyl Baseboard - Room 104	Gray Non-Fibrous Homogeneous		100% Other		None Detected
KEY-47 / 23038139-047 Associated Mastic - Room 104	Various Non-Fibrous Heterogeneous		100% Other		None Detected
KEY-48 / 23038139-048 Vinyl Baseboard - Lower Level Room 2	Gray Non-Fibrous Homogeneous		100% Other		None Detected
KEY-49 / 23038139-049 Associated Mastic - Lower Level Room 2	Various Non-Fibrous Heterogeneous		100% Other		None Detected

Analyst: *Meivis Sanchez*

Approved Signatory: *Johnathan Wilson*

Analysis Date: 7/21/2023

Date: 7/21/2023



SanAir ID Number  
**23038139**  
 FINAL REPORT  
 7/21/2023 3:14:01 PM

**Name:** Keystone Environmental, LLC  
**Address:** 4705 Ferris Ave  
 Madison, WI 53716  
**Phone:** 231-651-0791

**Project Number:**  
**P.O. Number:**  
**Project Name:** Manitowoc  
**Collected Date:** 7/11/2023 - 7/12/2023  
**Received Date:** 7/14/2023 10:35:00 AM

Analyst: Sanchez, Meivis | Childress, Susan | Moore, Brandi | Drakes, Renaldo

### Asbestos Bulk PLM EPA 600/R-93/116

SanAir ID / Description	Stereoscopic	Components		Asbestos Fibers
	Appearance	% Fibrous	% Non-fibrous	
KEY-50 / 23038139-050 2'x2' Ceiling Tile - Room 103	White Fibrous Homogeneous	55% Cellulose 15% Glass	30% Other	None Detected
KEY-51 / 23038139-051 1'x1' Ceiling Tile - Room 101	Gray Fibrous Homogeneous	85% Glass	15% Other	None Detected
KEY-52 / 23038139-052 1'x1' Ceiling Tile - Room 102	Gray Fibrous Homogeneous	85% Glass	15% Other	None Detected
KEY-53 / 23038139-053 1'x1' Ceiling Tile - Room 103	Gray Fibrous Homogeneous	85% Glass	15% Other	None Detected
KEY-54 / 23038139-054 Glue Pad Above Tile - Room 101	Brown Non-Fibrous Homogeneous		100% Other	None Detected
KEY-55 / 23038139-055 Glue Pad Above Tile - Room 102	Brown Non-Fibrous Homogeneous		100% Other	None Detected
KEY-56 / 23038139-056 Glue Pad Above Tile - Room 103	Brown Non-Fibrous Homogeneous		100% Other	None Detected
KEY-57 / 23038139-057 9"x9" Floor Tile - Lower Level Room 2	Brown Non-Fibrous Homogeneous		95% Other	5% Chrysotile
KEY-58 / 23038139-058 9"x9" Floor Tile - Room 104	Brown Non-Fibrous Homogeneous		95% Other	5% Chrysotile
KEY-59 / 23038139-059 9"x9" Floor Tile - 2nd Floor - Center Room	Brown Non-Fibrous Homogeneous		95% Other	5% Chrysotile

Analyst: *Meivis Sanchez*

Approved Signatory: *Johnathan Wilson*

Analysis Date: 7/21/2023

Date: 7/21/2023



SanAir ID Number

23038139

FINAL REPORT

7/21/2023 3:14:01 PM

**Name:** Keystone Environmental, LLC  
**Address:** 4705 Ferris Ave  
 Madison, WI 53716  
**Phone:** 231-651-0791

**Project Number:**  
**P.O. Number:**  
**Project Name:** Manitowoc  
**Collected Date:** 7/11/2023 - 7/12/2023  
**Received Date:** 7/14/2023 10:35:00 AM

Analyst: Sanchez, Meivis | Childress, Susan | Moore, Brandi | Drakes, Renaldo

### Asbestos Bulk PLM EPA 600/R-93/116

SanAir ID / Description	Stereoscopic Appearance	Components		Asbestos Fibers
		% Fibrous	% Non-fibrous	
KEY-60 / 23038139-060 Mastic Beneath #57	Black Non-Fibrous Homogeneous		95% Other	5% Chrysotile
KEY-61 / 23038139-061 Mastic Beneath #58	Black Non-Fibrous Homogeneous		95% Other	5% Chrysotile
KEY-62 / 23038139-062 Mastic Beneath #59	Black Non-Fibrous Homogeneous		95% Other	5% Chrysotile
KEY-63 / 23038139-063 Mastic On Top Of - #57	Yellow Non-Fibrous Homogeneous		100% Other	None Detected
KEY-64 / 23038139-064 Mastic On Top Of - #58	Yellow Non-Fibrous Homogeneous		100% Other	None Detected
KEY-65 / 23038139-065 Mastic On Top Of - #59	Yellow Non-Fibrous Homogeneous		100% Other	None Detected
KEY-66 / 23038139-066 9"x9" Floor Tile - Lower Level Room 2	Brown Non-Fibrous Homogeneous		95% Other	5% Chrysotile
KEY-67 / 23038139-067 9"x9" Floor Tile - Room 104	Brown Non-Fibrous Homogeneous		95% Other	5% Chrysotile
KEY-68 / 23038139-068 9"x9" Floor Tile - 2nd Floor Center Room	Brown Non-Fibrous Homogeneous		95% Other	5% Chrysotile
KEY-69 / 23038139-069 Mastic Beneath Tile - Lower Level Room 2	Black Non-Fibrous Homogeneous		95% Other	5% Chrysotile

Analyst: *Meivis Sanchez*

Approved Signatory: *Johnathan Wilson*

Analysis Date: 7/21/2023

Date: 7/21/2023





SanAir ID Number  
**23038139**  
 FINAL REPORT  
 7/21/2023 3:14:01 PM

**Name:** Keystone Environmental, LLC  
**Address:** 4705 Ferris Ave  
 Madison, WI 53716  
**Phone:** 231-651-0791

**Project Number:**  
**P.O. Number:**  
**Project Name:** Manitowoc  
**Collected Date:** 7/11/2023 - 7/12/2023  
**Received Date:** 7/14/2023 10:35:00 AM

Analyst: Sanchez, Meivis | Childress, Susan | Moore, Brandi | Drakes, Renaldo

### Asbestos Bulk PLM EPA 600/R-93/116

SanAir ID / Description	Stereoscopic		Components		Asbestos Fibers
	Appearance	% Fibrous	% Non-fibrous		
KEY-70 / 23038139-070 Mastic Beneath Tile - Room 104	Black Non-Fibrous Homogeneous		95% Other		5% Chrysotile
KEY-71 / 23038139-071 Mastic Beneath Tile - 2nd Floor Center Room	Black Non-Fibrous Homogeneous		95% Other		5% Chrysotile
KEY-72 / 23038139-072 Mastic Above Tile - Lower Level Room 2	Yellow Non-Fibrous Homogeneous		100% Other		None Detected
KEY-73 / 23038139-073 Mastic Above Tile - Room 104	Yellow Non-Fibrous Homogeneous		100% Other		None Detected
KEY-74 / 23038139-074 9"x9" Floor Tile - Room 103	Green Non-Fibrous Homogeneous		95% Other		5% Chrysotile
KEY-75 / 23038139-075 Mastic Beneath Tile - Room 103	Black Non-Fibrous Homogeneous		92% Other		8% Chrysotile
KEY-76 / 23038139-076 2'x4' Ceiling Tile - 1st Floor Hallway	White Fibrous Homogeneous	45% Cellulose 35% Glass	20% Other		None Detected
KEY-77 / 23038139-077 2'x4' Ceiling Tile - 1st Floor Hallway	White Fibrous Homogeneous	45% Cellulose 35% Glass	20% Other		None Detected
KEY-78 / 23038139-078 2'x4' Ceiling Tile - 1st Floor Hallway	White Fibrous Homogeneous	45% Cellulose 35% Glass	20% Other		None Detected
KEY-79 / 23038139-079 Ceramic Tile - 2nd Floor Bathroom	White Non-Fibrous Homogeneous		100% Other		None Detected

Analyst: *Meivis Sanchez*

Approved Signatory: *Johnathan Wilson*

Analysis Date: 7/21/2023

Date: 7/21/2023



SanAir ID Number  
**23038139**  
 FINAL REPORT  
 7/21/2023 3:14:01 PM

**Name:** Keystone Environmental, LLC  
**Address:** 4705 Ferris Ave  
 Madison, WI 53716  
**Phone:** 231-651-0791

**Project Number:**  
**P.O. Number:**  
**Project Name:** Manitowoc  
**Collected Date:** 7/11/2023 - 7/12/2023  
**Received Date:** 7/14/2023 10:35:00 AM

Analyst: Sanchez, Meivis | Childress, Susan | Moore, Brandi | Drakes, Renaldo

### Asbestos Bulk PLM EPA 600/R-93/116

SanAir ID / Description	Stereoscopic	Components		Asbestos Fibers
	Appearance	% Fibrous	% Non-fibrous	
KEY-80 / 23038139-080 Hard Vinyl Baseboard - 2nd Floor West End	Brown Non-Fibrous Homogeneous		95% Other	5% Chrysotile
KEY-81 / 23038139-081 Hard Vinyl Baseboard - 2nd Floor - Center	Brown Non-Fibrous Homogeneous		95% Other	5% Chrysotile
KEY-82 / 23038139-082 Hard Vinyl Baseboard - 2nd Floor - Center	Brown Non-Fibrous Homogeneous		95% Other	5% Chrysotile
KEY-83 / 23038139-083 Mastic Behind Baseboard - 2nd Floor West End	Yellow Non-Fibrous Homogeneous		100% Other	None Detected
KEY-84 / 23038139-084 Mastic Behind Baseboard - 2nd Floor - Center	Yellow Non-Fibrous Homogeneous		100% Other	None Detected
KEY-85 / 23038139-085 Mastic Behind Baseboard - 2nd Floor - Center	Yellow Non-Fibrous Homogeneous		100% Other	None Detected
KEY-86 / 23038139-086 9"x9" Floor Tile - Room Adjacent To Kitchen	Green Non-Fibrous Homogeneous		95% Other	5% Chrysotile
KEY-87 / 23038139-087 Mastic Beneath Tile - Room Adjacent To Kitchen	Black Non-Fibrous Homogeneous		92% Other	8% Chrysotile
KEY-88 / 23038139-088 9"x9" Floor Tile - Room Adjacent To Kitchen	Grey Non-Fibrous Homogeneous		95% Other	5% Chrysotile
KEY-89 / 23038139-089 Mastic Beneath Tile - Room Adjacent To Kitchen	Black Non-Fibrous Homogeneous		92% Other	8% Chrysotile

Analyst: *Meivis Sanchez*

Approved Signatory: *Jonathan Wilson*

Analysis Date: 7/21/2023

Date: 7/21/2023



SanAir ID Number  
**23038139**  
 FINAL REPORT  
 7/21/2023 3:14:01 PM

**Name:** Keystone Environmental, LLC  
**Address:** 4705 Ferris Ave  
 Madison, WI 53716  
**Phone:** 231-651-0791

**Project Number:**  
**P.O. Number:**  
**Project Name:** Manitowoc  
**Collected Date:** 7/11/2023 - 7/12/2023  
**Received Date:** 7/14/2023 10:35:00 AM

Analyst: Sanchez, Meivis | Childress, Susan | Moore, Brandi | Drakes, Renaldo

### Asbestos Bulk PLM EPA 600/R-93/116

SanAir ID / Description	Stereoscopic		Components		Asbestos Fibers
	Appearance	% Fibrous	% Non-fibrous		
KEY-90 / 23038139-090 Linoleum 2nd Floor Kitchen, Linoleum	Beige Non-Fibrous Heterogeneous		100% Other		None Detected
KEY-90 / 23038139-090 Linoleum 2nd Floor Kitchen, Backing	Green Fibrous Homogeneous	70% Cellulose	30% Other		None Detected
KEY-91 / 23038139-091 9"x9" Floor Tile - Large Center Room 2nd Floor	Black Non-Fibrous Homogeneous		92% Other		8% Chrysotile
KEY-92 / 23038139-092 Mastic Beneath Tile - Large Center Room 2nd Floor	Black Non-Fibrous Homogeneous		92% Other		8% Chrysotile
KEY-93 / 23038139-093 Vinyl Baseboard - Kitchen 2nd Floor	Black Non-Fibrous Homogeneous		100% Other		None Detected
KEY-94 / 23038139-094 Mastic Behind Baseboard - Kitchen 2nd Floor	Cream Non-Fibrous Homogeneous		100% Other		None Detected
KEY-95 / 23038139-095 Mastic On Wood - East 2nd Floor Classrooms	Yellow Non-Fibrous Homogeneous		100% Other		None Detected
KEY-96 / 23038139-096 Mastic On Wood - East 2nd Floor Classrooms	Yellow Non-Fibrous Homogeneous		100% Other		None Detected
KEY-97 / 23038139-097 Mastic On Wood - East 2nd Floor Classrooms	Yellow Non-Fibrous Homogeneous		100% Other		None Detected
KEY-98 / 23038139-098 Chalkboard - East 2nd Floor Classrooms	Green Non-Fibrous Homogeneous		100% Other		None Detected

Analyst: *Meivis Sanchez*

Approved Signatory: *Johnathan Wilson*

Analysis Date: 7/21/2023

Date: 7/21/2023



SanAir ID Number  
**23038139**  
 FINAL REPORT  
 7/21/2023 3:14:01 PM

**Name:** Keystone Environmental, LLC  
**Address:** 4705 Ferris Ave  
 Madison, WI 53716  
**Phone:** 231-651-0791

**Project Number:**  
**P.O. Number:**  
**Project Name:** Manitowoc  
**Collected Date:** 7/11/2023 - 7/12/2023  
**Received Date:** 7/14/2023 10:35:00 AM

Analyst: Sanchez, Meivis | Childress, Susan | Moore, Brandi | Drakes, Renaldo

### Asbestos Bulk PLM EPA 600/R-93/116

SanAir ID / Description	Stereoscopic		Components		Asbestos Fibers
	Appearance		% Fibrous	% Non-fibrous	
KEY-99 / 23038139-099 TSI On Pipes - Lower Level Beneath Stairwell	Gray Fibrous Homogeneous		30% Cellulose 8% Glass	37% Other	25% Chrysotile
KEY-100 / 23038139-100 TSI On Pipes - 1st Floor - W. End	Gray Fibrous Homogeneous			40% Other	60% Chrysotile
KEY-101 / 23038139-101 TSI On Pipes - 2nd Floor Bathroom Pipe Chase/Closet	Gray Fibrous Homogeneous			40% Other	60% Chrysotile
KEY-102 / 23038139-102 TSI Elbow/Fittings - Lower Level East End	Various Fibrous Homogeneous		30% Cellulose	10% Other	60% Chrysotile
KEY-103 / 23038139-103 TSI Elbow/Fittings - 1st Floor Room 103	Various Fibrous Homogeneous		30% Cellulose	10% Other	60% Chrysotile
KEY-104 / 23038139-104 TSI Elbow/Fittings - 1st Floor - Room 104	Various Fibrous Homogeneous		20% Cellulose	20% Other	60% Chrysotile
KEY-105 / 23038139-105 TSI - On Pipes - Lower Level Dining Area Along Walls	Various Fibrous Homogeneous		30% Cellulose	10% Other	60% Chrysotile
KEY-106 / 23038139-106 Vinyl Baseboard - Lower Level Center Area	Brown Non-Fibrous			100% Other	None Detected
KEY-107 / 23038139-107 Mastic Behind Baseboard - Lower Level Center Area	Cream Non-Fibrous Homogeneous			100% Other	None Detected
KEY-108 / 23038139-108 Roofing Field - Roof East Side	Black Non-Fibrous Homogeneous			100% Other	None Detected

Analyst:

*Meivis Sanchez*

Approved Signatory:

*Johnathan Wilson*

Analysis Date:

7/21/2023

Date:

7/21/2023



SanAir ID Number  
**23038139**  
 FINAL REPORT  
 7/21/2023 3:14:01 PM

**Name:** Keystone Environmental, LLC  
**Address:** 4705 Ferris Ave  
 Madison, WI 53716  
**Phone:** 231-651-0791

**Project Number:**  
**P.O. Number:**  
**Project Name:** Manitowoc  
**Collected Date:** 7/11/2023 - 7/12/2023  
**Received Date:** 7/14/2023 10:35:00 AM

Analyst: Sanchez, Meivis | Childress, Susan | Moore, Brandi | Drakes, Renaldo

### Asbestos Bulk PLM EPA 600/R-93/116

SanAir ID / Description	Stereoscopic	Components		Asbestos Fibers
	Appearance	% Fibrous	% Non-fibrous	
KEY-109 / 23038139-109 Roofing Field - Roof East Side	Black Non-Fibrous Homogeneous		100% Other	None Detected
KEY-110 / 23038139-110 Roofing Field - Roof East Side	Black Non-Fibrous Homogeneous		100% Other	None Detected
KEY-111 / 23038139-111 Mastic Beneath Field - Roof East Side	Black Non-Fibrous Heterogeneous		97% Other	3% Chrysotile
KEY-112 / 23038139-112 Mastic Beneath Field - Roof East Side	Black Non-Fibrous Heterogeneous		97% Other	3% Chrysotile
KEY-113 / 23038139-113 Mastic Beneath Field - Roof East Side	Black Non-Fibrous Heterogeneous		97% Other	3% Chrysotile
KEY-114 / 23038139-114 Paint On Exhausts - Roof East Side	Silver Non-Fibrous Heterogeneous		100% Other	None Detected
KEY-115 / 23038139-115 Flashing Along Parapets - Roof East Side	Black Non-Fibrous Heterogeneous		100% Other	None Detected
KEY-116 / 23038139-116 Asphalt Roofing Field - Roof West Side	Black Non-Fibrous Heterogeneous		100% Other	None Detected
KEY-117 / 23038139-117 Asphalt Roofing Field - Roof West Side	Black Non-Fibrous Heterogeneous		100% Other	None Detected
KEY-118 / 23038139-118 Asphalt Roofing Field - Roof West Side	Black Non-Fibrous Heterogeneous		100% Other	None Detected

Analyst: *Meivis Sanchez*

Approved Signatory: *Johnathan Wilson*

Analysis Date: 7/21/2023

Date: 7/21/2023



SanAir ID Number

23038139

FINAL REPORT

7/21/2023 3:14:01 PM

**Name:** Keystone Environmental, LLC  
**Address:** 4705 Ferris Ave  
 Madison, WI 53716  
**Phone:** 231-651-0791

**Project Number:**  
**P.O. Number:**  
**Project Name:** Manitowoc  
**Collected Date:** 7/11/2023 - 7/12/2023  
**Received Date:** 7/14/2023 10:35:00 AM

Analyst: Sanchez, Meivis | Childress, Susan | Moore, Brandi | Drakes, Renaldo

### Asbestos Bulk PLM EPA 600/R-93/116

SanAir ID / Description	Stereoscopic	Components		Asbestos Fibers
	Appearance	% Fibrous	% Non-fibrous	
KEY-119 / 23038139-119 Flashing On Vents - Roof West Side	Silver Non-Fibrous Heterogeneous		100% Other	None Detected
KEY-120 / 23038139-120 Flashing On Vents - Roof West Side	Silver Non-Fibrous Heterogeneous		100% Other	None Detected
KEY-121 / 23038139-121 Flashing On Vents - Roof West Side	Silver Non-Fibrous Heterogeneous		100% Other	None Detected
KEY-122 / 23038139-122 Brick - Exterior Sides	Red Non-Fibrous Homogeneous		100% Other	None Detected
KEY-123 / 23038139-123 Brick - Exterior Sides	Red Non-Fibrous Homogeneous		100% Other	None Detected
KEY-124 / 23038139-124 Brick - Roof	Red Non-Fibrous Homogeneous		100% Other	None Detected
KEY-125 / 23038139-125 Associated Mortar - Exterior Sides	White Non-Fibrous Homogeneous		100% Other	None Detected
KEY-126 / 23038139-126 Associated Mortar - Exterior Sides	White Non-Fibrous Homogeneous		100% Other	None Detected
KEY-127 / 23038139-127 Associated Mortar - Roof	Red Non-Fibrous Homogeneous		100% Other	None Detected
KEY-128 / 23038139-128 Window Glazing - Exterior - S. End	White Non-Fibrous Homogeneous		97% Other	3% Chrysotile

Analyst: *Meivis Sanchez*

Approved Signatory: *Johnathan Wilson*

Analysis Date: 7/21/2023

Date: 7/21/2023



SanAir ID Number  
**23038139**  
 FINAL REPORT  
 7/21/2023 3:14:01 PM

**Name:** Keystone Environmental, LLC  
**Address:** 4705 Ferris Ave  
 Madison, WI 53716  
**Phone:** 231-651-0791

**Project Number:**  
**P.O. Number:**  
**Project Name:** Manitowoc  
**Collected Date:** 7/11/2023 - 7/12/2023  
**Received Date:** 7/14/2023 10:35:00 AM

Analyst: Sanchez, Meivis | Childress, Susan | Moore, Brandi | Drakes, Renaldo

### Asbestos Bulk PLM EPA 600/R-93/116

SanAir ID / Description	Stereoscopic		Components		Asbestos Fibers
	Appearance		% Fibrous	% Non-fibrous	
KEY-129 / 23038139-129 Window Glazing - Exterior - W. End	White Non-Fibrous Heterogeneous			100% Other	< 1% Chrysotile
KEY-130 / 23038139-130 Window Glazing - Exterior - N. End	White Non-Fibrous Heterogeneous			100% Other	< 1% Chrysotile
KEY-131 / 23038139-131 1'x1' Ceiling Tile - Lower Level Room 2 Bathroom	White Fibrous Homogeneous		95% Cellulose	5% Other	None Detected
KEY-132 / 23038139-132 Glue Pads Above Tile - Lower Level Room 2 Bathroom	Brown Non-Fibrous Homogeneous			100% Other	None Detected
KEY-133 / 23038139-133 Hard Vinyl Baseboard - Lower Level Kitch	Black Non-Fibrous Homogeneous			95% Other	5% Chrysotile
KEY-134 / 23038139-134 Mastic Behind Baseboard - Lower Level Kitch	Black Non-Fibrous Homogeneous			96% Other	4% Chrysotile
KEY-135 / 23038139-135 9"x9" - 2nd Floor Top Of Stairs East	Brown Non-Fibrous Homogeneous			95% Other	5% Chrysotile
KEY-136 / 23038139-136 Mastic Beneath Tile - 2nd Floor Top Of Stairs East	Black Non-Fibrous Homogeneous			96% Other	4% Chrysotile
KEY-137 / 23038139-137 Patterned Linoleum - 2nd Floor Kitchen Beneath Sink	White Non-Fibrous Heterogeneous			85% Other	15% Chrysotile
KEY-138 / 23038139-138 8"x9" Ceiling Tile - Principal's Office	Gray Fibrous Homogeneous		75% Glass	25% Other	None Detected

Analyst: *Meivis Sanchez*

Approved Signatory: *Johnathan Wilson*

Analysis Date: 7/21/2023

Date: 7/21/2023



SanAir ID Number  
**23038139**  
 FINAL REPORT  
 7/21/2023 3:14:01 PM

**Name:** Keystone Environmental, LLC  
**Address:** 4705 Ferris Ave  
 Madison, WI 53716  
**Phone:** 231-651-0791

**Project Number:**  
**P.O. Number:**  
**Project Name:** Manitowoc  
**Collected Date:** 7/11/2023 - 7/12/2023  
**Received Date:** 7/14/2023 10:35:00 AM

Analyst: Sanchez, Meivis | Childress, Susan | Moore, Brandi | Drakes, Renaldo

### Asbestos Bulk PLM EPA 600/R-93/116

SanAir ID / Description	Stereoscopic	Components		Asbestos Fibers
	Appearance	% Fibrous	% Non-fibrous	
KEY-139 / 23038139-139	Brown		98% Other	2% Chrysotile
Glue Pads Above Tile - Principal's Office	Non-Fibrous Homogeneous			

Analyst: *Meivis Sanchez*

Approved Signatory: *Johnathan Wilson*

Analysis Date: 7/21/2023

Date: 7/21/2023



## Disclaimer

This report is the sole property of the client named on the SanAir Technologies Laboratory chain-of-custody (COC). Results in the report are confidential information intended only for the use by the customer listed on the COC. Neither results nor reports will be discussed with or released to any third party without our client's written permission. The final report shall not be reproduced except in full without written approval of the laboratory to assure that parts of the report are not taken out of context. The information provided in this report applies only to the samples submitted and is relevant only for the date, time, and location of sampling. The accuracy of the results is dependent upon the client's sampling procedure and information provided to the laboratory by the client. SanAir assumes no responsibility for the sampling procedure and will provide evaluation reports based solely on the sample(s) in the condition in which they arrived at the laboratory and information provided by the client on the COC, such as: project number, project name, collection dates, po number, special instructions, samples collected by, sample numbers, sample identifications, sample type, selected analysis type, flow rate, total volume or area, and start stop times that may affect the validity of the results in this report. Samples were received in good condition unless otherwise noted on the report. SanAir assumes no responsibility or liability for the manner in which the results are used or interpreted. This report does not constitute and shall not be used to claim product certification, approval, or endorsement by NVLAP, NIST, or any other U.S. governmental agencies and may not be certified by every local, state, and federal regulatory agencies.

Samples are held for a period of 60 days. Fibers smaller than 5 microns cannot be seen with this method due to scope limitations.

For NY state samples, method EPA 600/M4-82-020 is performed.

### NYELAP Disclaimer:

Polarized- light microscopy is not consistently reliable in detecting asbestos in floor covering and similar non-friable organically bound materials. Quantitative transmission electron microscopy is currently the only method that can be used to determine if this material can be considered or treated as non-asbestos containing.

### Asbestos Certifications

NVLAP lab code 200870-0

City of Philadelphia: ALL-460

PA Department of Environmental Protection Number: 68-05397

California License Number: 2915

Colorado License Number: AL-23143

Connecticut License Number: PH-0105

Massachusetts License Number: AA000222

Maine License Number: LB-0075, LA-0084

New York ELAP lab ID: 11983

Rhode Island License Number: PCM00126, PLM00126, TEM00126

Texas Department of State Health Services License Number: 300440

Commonwealth of Virginia 3333000323

Washington State License Number: C989

West Virginia License Number: LT000616

Vermont License: AL166318

Louisiana Department of Environmental Quality: 212253, Cert 05088

Revision Date: 8/14/2020



1551 Oakbridge Dr. STE B  
 Powhatan, VA 23139  
 804.897.1177 / 888.895.1177  
 Fax 804.897.0070  
 sanair.com

Asbestos  
 Chain of Custody  
 Form 140, Rev 1, 1/20/2017

SanAir ID Number  
 23038139

Company: <b>Keystone Environmental, LLC</b>	Project #:	Collect by:
Address: <b>171 South Fair Oaks Ave, #450</b>	Project Name: <b>Manitowoc</b>	Phone #: <b>2316510791</b>
City, St., Zip: <b>Madison, WI 53704</b>	Date Collected: <b>7/11-12/23</b>	Fax #:
State of Collection: <b>WI</b> Account#: <b>3925</b>	P.O. Number:	Email: <b>contact@keystone-env.com</b>

Bulk			Air			Soil		
ABB	PLM EPA 600/R-93/116	<input checked="" type="checkbox"/>	ABA	PCM NIOSH 7400	<input type="checkbox"/>	ABSE	PLM EPA 600/R-93/116 (Qual.)	<input type="checkbox"/>
	Positive Stop	<input type="checkbox"/>	ABA-2	OSHA w/ TWA*	<input type="checkbox"/>	Vermiculite & Soil		
ABEPA	PLM EPA 400 Point Count	<input type="checkbox"/>	ABTEM	TEM AHERA	<input type="checkbox"/>	ABSP	PLM CARB 435 (LOD <1%)	<input type="checkbox"/>
ABBIK	PLM EPA 1000 Point Count	<input type="checkbox"/>	ABATN	TEM NIOSH 7402	<input type="checkbox"/>	ABSPI	PLM CARB 435 (LOD 0.25%)	<input type="checkbox"/>
ABBEN	PLM EPA NOB**	<input type="checkbox"/>	ABT2	TEM Level II	<input type="checkbox"/>	ABSP2	PLM CARB 435 (LOD 0.1%)	<input type="checkbox"/>
ABBCH	TEM Chatfield**	<input type="checkbox"/>	Other:		<input type="checkbox"/>	Dust		
ABBTM	TEM EPA NOB**	<input type="checkbox"/>	New York ELAP			ABWA	TEM Wipe ASTM D-6480	<input type="checkbox"/>
ABQ	PLM Qualitative	<input type="checkbox"/>	PLM NY	PLM EPA 600/M4-82-020	<input type="checkbox"/>	ABDMV	TEM Microvac ASTM D-5755	<input type="checkbox"/>
** Available on 24-hr. to 5-day TAT			ABEPA2	NY ELAP 198.1	<input type="checkbox"/>	Matrix Other		
Water			ABENY	NY ELAP 198.6 PLM NOB	<input type="checkbox"/>			<input type="checkbox"/>
ABHE	EPA 100.2	<input type="checkbox"/>	ABBNY	NY ELAP 198.4 TEM NOB	<input type="checkbox"/>			<input type="checkbox"/>

Turn Around Times	3 HR (4 HR TEM) <input type="checkbox"/>	6 HR (8HR TEM) <input type="checkbox"/>	12 HR <input type="checkbox"/>	24 HR <input type="checkbox"/>
	<input type="checkbox"/> 2 Days	<input type="checkbox"/> 3 Days	<input type="checkbox"/> 4 Days	<input checked="" type="checkbox"/> 5 Days

**Special Instructions**

Sample #	Sample Identification/Location	Volume or Area	Sample Date	Flow Rate*	Start - Stop Time*
KEY-01	White Plaster Topcoat - Lower Level Room 2				
KEY-02	- Lower Level Mechanical closet				
KEY-03	- 1 <sup>st</sup> Floor - Room 101				
KEY-04	- ↓ - Hallway				
KEY-05	- ↓ - Room 107				
KEY-06	- 2 <sup>nd</sup> Floor - West Stairwell				
KEY-07	- ↓ - Near Kitchen				
KEY-08	Gray Plaster Bottomcoat - Lower Level Room 2				
KEY-09	- Lower Level Mechanical closet				
KEY-10	- 1 <sup>st</sup> Floor - Room 101				
KEY-11	- ↓ - Hallway				
KEY-12	- ↓ - Room 107				

Requested by: <b>TA</b>	Date: <b>7/11/23</b>	Time:	Received by: <b>EDR</b>	Date: <b>7/14/23</b>	Time: <b>10:35 a.m.</b>
-------------------------	----------------------	-------	-------------------------	----------------------	-------------------------

If no technician is provided, then the primary contact for your account will be selected. Unless scheduled, the turnaround time for all samples received after 3 pm EST Friday will begin at 8 am Monday morning. Weekend or holiday work must be scheduled ahead of time and is charged for rush turnaround time. SanAir covers Standard Overnight FedEx shipping. Shipments billed to SanAir with a faster shipping rate will result in additional charges.

2303 8139

Sample #	Sample Identification/Location	Volume or Area	Sample Date	Flow Rate*	Start - Stop Time*
13	Gray Plaster Bottomcoat - <sup>2nd Floor</sup> West Stairwell				
14	↓ - Near Kitchen				
15	Beige 12"x12" Floor Tile - ↑				
16	↓ - Lower Level Center Area				
17	↓ -				
18	Black Mastic Beneath Tile -				
19	↓ -				
20	↓ -				
21	Blue 12"x12" Floor Tile - Lower Level Room 2				
22	Black Mastic Beneath Tile - ↓				
23	Gray 12"x12" w/ Red Streaks - Lower Level Men Room				
24	Black Mastic Beneath Tile - ↓				
25	Dark Brown 9"x9" w/ Red Streaks - Lower Level Kitchen				
26	Black Mastic Beneath Tile - ↓				
27	Gray Vent Patch - Lower Level Boiler Room				
28	Gray Electrical Panel Board - ↓				
29	Light Beige 12"x12" Floor Tile - Lower Level - S/E Corner Room				
30	Yellow Mastic Beneath Tile - ↓				
31	White 1'x1' Ceiling Tile w/ Pinholes - Lower Level Center Area				
32	↓ -				
33	↓ -				
34	Brown Blue Pads Above Tile -				
35	↓ -				
36	↓ -				
37	White 2'x2' Ceiling Tile - Lower Level - SE Corner Room				
38	White 1'x1' Ceiling Tile with Divots - Lower Level Room 2				
39	Multicolor Linoleum on shelving - Kitchen				
40	Brown Ceramic Tile - In stairwell				
41	Associated Grout - ↓				
42	Green Terrazo - Hallways				
43	Beige Terrazo - ↓				

Special Instructions

Relinquished by	Date	Time	Received by	Date	Time
			EDR	7/14/23	10:35 a.m.

If no technician is provided, then the primary contact for your account will be selected. Unless scheduled, the turnaround time for all samples received after 3 pm EST will be logged in the next business day. Weekend or holiday work must be scheduled ahead of time and is charged at 150% of the 3hr TAT or a minimum charge of \$150. A courier charge will be applied for same day and one-day turnaround times for offsite work. SanAir covers Standard Overnight FedEx shipping. Shipments billed to SanAir with a faster shipping rate will result in additional charges.

23038139

Sample #	Sample Identification/Location	Volume or Area	Sample Date	Flow Rate*	Start - Stop Time*
44	Cream colored Ceramic tile				
45	Brown Radiator Covering - Hallways				
46	Gray vinyl Baseboard - Room 104				
47	Associated Mastic				
48	Gray vinyl Baseboard - Lower Level Room 2				
49	Associated Mastic - 2				
50	2'x2' white ceiling tile - Room 103				
51	gray 1'x1' ceiling tile - Room 101				
52		Room 102			
53		Room 103			
54	Brown/Beige Blue Ped Above Tile - Room 101				
55		Room 102			
56		Room 103			
57	Light Brown 9"x9" Floor Tile - Lower Level Room 2				
58		Room 104			
59		2 <sup>nd</sup> Floor - Center Room			
60	Black Mastic Beneath #57				
61		#58			
62		#59			
63	Yellow Mastic on top of #57				
64		#58			
65		#59			
66	Brown 9"x9" Floor Tile - lower Level Room 2				
67		Room 104			
68		2 <sup>nd</sup> Floor Center Room			
69	Black Mastic Beneath tile - Lower Level Room 2				
70		Room 104			
76		2 <sup>nd</sup> Floor Center Room			
72	Yellow Mastic Above Tile - Lower Level Room 2				
73		Room 104			
74	Green 9"x9" Floor Tile - Room 103				

Special Instructions

Relinquished by	Date	Time	Received by	Date	Time
			EDR	7/14/23	10:35 a.m.

If no technician is provided, then the primary contact for your account will be selected. Unless scheduled, the turnaround time for all samples received after 3 pm EST will be logged in the next business day. Weekend or holiday work must be scheduled ahead of time and is charged at 150% of the 3hr TAT or a minimum charge of \$150. A courier charge will be applied for same day and one-day turnaround times for offsite work. SanAir covers Standard Overnight FedEx Shipping. Shipments billed to SanAir with a faster shipping rate will result in additional charges.

23038139

Sample #	Sample Identification/Location	Volume or Area	Sample Date	Flow Rate*	Start - Stop Time*
75	Black Mastix Beneath Tile - Room 103				
76	2'x4' White Ceiling Tile - 1 <sup>st</sup> Floor Hallway				
77					
78					
79	Blue Ceramic Tile - 2 <sup>nd</sup> Floor Bathroom				
80	Brown Hard Vinyl Baseboard - 2 <sup>nd</sup> Floor West End				
81		- Center			
82		- Center			
83	Mastix Behind Baseboard - 2 <sup>nd</sup> Floor West End				
84		- Center			
85		- Center			
86	Light Green 9'x9" Floor Tile - Room Adjacent to Kitchen				
87	Black Mastix Beneath Tile				
88	Dark Grey 9'x9" Floor Tile				
89	Black Mastix Beneath Tile				
90	Beige Linoleum - 2 <sup>nd</sup> Floor Kitchen				
91	Black 9'x9" Floor Tile - Large Center Room 2 <sup>nd</sup> Floor				
92	Black Mastix Beneath Tile				
93	Black Vinyl Baseboard - Kitchen 2 <sup>nd</sup> Floor				
94	Mastix Behind Baseboard				
95	Dark Yellow Mastix on Wall - East 2 <sup>nd</sup> Floor Classroom				
96					
97					
98	Green Chalkboard				
99	Gray TSE on Pipes - 2 <sup>nd</sup> Floor Lower Level (beneath stairs)				
100		- 1 <sup>st</sup> Floor - W. End			
101		- 2 <sup>nd</sup> Floor Bathroom Pipe Chase/Closet			
102	Gray/White TSE Elbow/Fittings - Lower Level East End				
103		- 1 <sup>st</sup> Floor Room 103			
104		- Room 104			
105	White TSE - on Pipes Lower Level Dining Area Along Walls				

L  
BT

Special Instructions

Relinquished by	Date	Time	Received by	Date	Time
			EDR	7/14/23	10:35 a.m.

If no technician is provided, then the primary contact for your account will be selected. Unless scheduled, the turnaround time for all samples received after 3 pm EST will be logged in the next business day. Weekend or holiday work must be scheduled ahead of time and is charged at 150% of the 3hr TAT or a minimum charge of \$150. A courier charge will be applied for same day and one-day turnaround times for offsite work. SanAir covers Ground and Next Day Air shipping. Shipments billed to SanAir with a faster shipping rate will result in additional charges. Page of

45

23038139

Sample #	Sample Identification/Location	Volume or Area	Sample Date	Flow Rate*	Start - Stop Time*
106	Brown vinyl Baseboard Lower Level Center Area				
107	Mastic Behind Baseboard - ↓				
108	Black Roofing Field - Rear East side				
109	↓ -				
110	↓ -				
111	Mastic Beneath Field -				
112	↓ -				
113	↓ -				
114	Silver Paint on Eaveasts -				
115	Black Flashing Along Parapets -				
116	Black Asphalt Roofing Field - Rear West side				
117	↓ -				
118	↓ -				
119	Silver Flashing on VENTS -				
120	↓ -				
<del>121</del> 121	↓ -				
122	Red Brick - Exterior side				
123	↓ - ↓				
124	↓ - Roof				
125	Associated Mortar Exterior side				
126	↓ - ↓				
127	↓ - Roof				
128	Gray/White window Glazing - Exterior - S. End				
129	↓ -				
130	↓ - N. End				
131	Flat White 1 1/2" Ceramic tile - Lower Level Room 2 Bathroom				
132	Brown Glue pads above Tile - ↓				
133	Black Hard vinyl Baseboard - Lower Level Kitchen				
134	Mastic Behind Baseboard - East ↓				
135	Light Brown 9" x 9" - 2nd Floor Top of Stair				
136	Black Mastic Beneath Tile - ↓				
137	White Patterned Limestone - 2nd floor Kitchen				
Special Instructions		Beneath Sink			

Relinquished by	Date	Time	Received by	Date	Time
			EDR	7/14/23	10:35 a.m.

If no technician is provided, then the primary contact for your account will be selected. Unless scheduled, the turnaround time for all samples received after 3 pm EST will be logged in the next business day. Weekend or holiday work must be scheduled ahead of time and is charged at 150% of the 3hr TAT or a minimum charge of \$150. A courier charge will be applied for same day and one-day turnaround times for offsite work. SanAir covers Standard Overnight FedEx shipping. Shipments billed to SanAir with a faster shipping rate will result in additional charges. Page of

138	Gray 8" x 8" Ceramic Tile - Principals office				
139	Brown Glue Pads above Tile - ↓				

S/K



**The Identification Specialists**

Analysis Report  
prepared for  
Keystone Environmental, LLC

**Report Date: 8/7/2023**

**Project Name: MAN 82**

**SanAir ID#: 23042518**



NVLAP LAB CODE 200870-0

10501 Trade Court | North Chesterfield, Virginia 23236  
888.895.1177 | 804.897.1177 | fax: 804.897.0070 | [IAQ@SanAir.com](mailto:IAQ@SanAir.com) | [SanAir.com](http://SanAir.com)



SanAir ID Number  
23042518  
FINAL REPORT  
8/7/2023 11:48:41 AM

**Name:** Keystone Environmental, LLC  
**Address:** 4705 Ferris Ave  
Madison, WI 53716  
**Phone:** 231-651-0791

**Project Number:**  
**P.O. Number:**  
**Project Name:** MAN 82  
**Collected Date:** 8/2/2023  
**Received Date:** 8/4/2023 10:40:00 AM

Dear Tucker Ryckman,

We at SanAir would like to thank you for the work you recently submitted. The 34 sample(s) were received on Friday, August 04, 2023 via UPS. The final report(s) is enclosed for the following sample(s): Key-01, Key-02, Key-03, Key-04, Key-05, Key-06, Key-07, Key-08, Key-09, Key-10, Key-11, Key-12, Key-13, Key-14, Key-15, Key-16, Key-17, Key-18, Key-19, Key-20, Key-21, Key-22, Key-23, Key-24, Key-25, Key-26, Key-27, Key-28, Key-29, Key-30, Key-31, Key-32, Key-33, Key-34.

These results only pertain to this job and should not be used in the interpretation of any other job. This report is only complete in its entirety. Refer to the listing below of the pages included in a complete final report.

Sincerely,

Sandra Sobrino  
Asbestos & Materials Laboratory Manager  
SanAir Technologies Laboratory

Final Report Includes:

- Cover Letter
- Analysis Pages
- Disclaimers and Additional Information

Sample conditions:

- 34 samples in Good condition.





SanAir ID Number  
 23042518  
 FINAL REPORT  
 8/7/2023 11:48:41 AM

**Name:** Keystone Environmental, LLC  
**Address:** 4705 Ferris Ave  
 Madison, WI 53716  
**Phone:** 231-651-0791

**Project Number:**  
**P.O. Number:**  
**Project Name:** MAN 82  
**Collected Date:** 8/2/2023  
**Received Date:** 8/4/2023 10:40:00 AM

Analyst: Hogrefe, Sarah

### Asbestos Bulk PLM EPA 600/R-93/116

SanAir ID / Description	Stereoscopic	Components		Asbestos Fibers
	Appearance	% Fibrous	% Non-fibrous	
Key-01 / 23042518-001 Wall Mastic Behind Wall Covering	Brown Non-Fibrous Homogeneous		100% Other	None Detected
Key-02 / 23042518-002 Boiler Door Fabric-On Boiler	White Fibrous Homogeneous	99% Glass	1% Other	None Detected
Key-03 / 23042518-003 Boiler Door Caulk-On Boiler	Clear Non-Fibrous Homogeneous		100% Other	None Detected
Key-04 / 23042518-004 Wall Mastic Behind Wall Covering-Ground Floor	Beige Non-Fibrous Homogeneous		100% Other	None Detected
Key-05 / 23042518-005 2" Baseboard-Ground Floor Wooden Room	Brown Non-Fibrous Homogeneous		100% Other	None Detected
Key-06 / 23042518-006 Mastic Behind Baseboard-Wooden Room	Beige Non-Fibrous Homogeneous		100% Other	None Detected
Key-07 / 23042518-007 Adhesive Between Wooden Floorboards-Ground Floor	Brown Non-Fibrous Heterogeneous		100% Other	None Detected
Key-08 / 23042518-008 Tar Paper Beneath Boards-Ground Floor	Black Fibrous Heterogeneous	65% Cellulose	35% Other	None Detected
Key-09 / 23042518-009 Ceramic Tiles-Ground Floor Bathrooms	Yellow Non-Fibrous Homogeneous		100% Other	None Detected
Key-10 / 23042518-010 Grout Associated W/ Tile-Ground Floor Bathrooms	White Non-Fibrous Homogeneous		100% Other	None Detected

Analyst:

Approved Signatory:

Analysis Date: 8/7/2023

Date: 8/7/2023



SanAir ID Number

23042518

FINAL REPORT

8/7/2023 11:48:41 AM

**Name:** Keystone Environmental, LLC  
**Address:** 4705 Ferris Ave  
 Madison, WI 53716  
**Phone:** 231-651-0791

**Project Number:**  
**P.O. Number:**  
**Project Name:** MAN 82  
**Collected Date:** 8/2/2023  
**Received Date:** 8/4/2023 10:40:00 AM

Analyst: Hogrefe, Sarah

### Asbestos Bulk PLM EPA 600/R-93/116

SanAir ID / Description	Stereoscopic	Components		Asbestos Fibers
	Appearance	% Fibrous	% Non-fibrous	
Key-11 / 23042518-011 Mastic Behind Tile-Ground Floor Bathrooms	Brown Non-Fibrous Homogeneous		100% Other	None Detected
Key-12 / 23042518-012 Tile Caulk-Ground Floor Bathrooms	Gray Non-Fibrous Homogeneous		100% Other	None Detected
Key-13 / 23042518-013 Sink Undercoat-Ground Floor Wooden Room	Gray Non-Fibrous Homogeneous	10% Cellulose	90% Other	None Detected
Key-14 / 23042518-014 Mastic Behind Cork Boards- Classrooms	Brown Non-Fibrous Homogeneous		100% Other	None Detected
Key-15 / 23042518-015 Paperboard Covering Chalkboard- Room 109-100	Gray Fibrous Homogeneous	99% Cellulose	1% Other	None Detected
Key-16 / 23042518-016 Terrazo-1st Floor Hall	Green Non-Fibrous Heterogeneous		100% Other	None Detected
Key-17 / 23042518-017 Drywall-1st Floor Behind Chalkboards	White Non-Fibrous Homogeneous	5% Cellulose	95% Other	None Detected
Key-18 / 23042518-018 Drywall-2nd Floor-Behind Drinking Fountain	White Non-Fibrous Homogeneous	5% Cellulose	95% Other	None Detected
Key-19 / 23042518-019 Drywall-2nd Floor Center Room	White Non-Fibrous Homogeneous	5% Cellulose	95% Other	None Detected
Key-20 / 23042518-020 Drywall-Compound-2nd Floor East End, Joint Compound	White Non-Fibrous Homogeneous		100% Other	None Detected

Analyst:

Approved Signatory:

Analysis Date: 8/7/2023

Date: 8/7/2023



SanAir ID Number  
**23042518**  
 FINAL REPORT  
 8/7/2023 11:48:41 AM

**Name:** Keystone Environmental, LLC  
**Address:** 4705 Ferris Ave  
 Madison, WI 53716  
**Phone:** 231-651-0791

**Project Number:**  
**P.O. Number:**  
**Project Name:** MAN 82  
**Collected Date:** 8/2/2023  
**Received Date:** 8/4/2023 10:40:00 AM

Analyst: Hogrefe, Sarah

### Asbestos Bulk PLM EPA 600/R-93/116

SanAir ID / Description	Stereoscopic		Components		Asbestos Fibers
	Appearance		% Fibrous	% Non-fibrous	
Key-20 / 23042518-020 Drywall-Compound-2nd Floor East End, Texture	White Non-Fibrous Homogeneous			100% Other	None Detected
Key-21 / 23042518-021 Drywall-Compound-2nd Floor Center Room	White Non-Fibrous Homogeneous			100% Other	None Detected
Key-22 / 23042518-022 Drywall-Compound-2nd Floor Center Room, Joint Compound	White Non-Fibrous Homogeneous			100% Other	None Detected
Key-22 / 23042518-022 Drywall-Compound-2nd Floor Center Room, Texture	White Non-Fibrous Homogeneous			100% Other	None Detected
Key-23 / 23042518-023 Wall Mastic-2nd Floor Behind Plastic Sheeting	Gray Non-Fibrous Homogeneous			100% Other	None Detected
Key-24 / 23042518-024 Caulking Around Bathroom-2nd Floor Bathrooms	White Non-Fibrous Homogeneous			100% Other	None Detected
Key-25 / 23042518-025 Caulking-East Side Exterior Windows (Covered)	Brown Non-Fibrous Homogeneous			100% Other	None Detected
Key-26 / 23042518-026 Door Caulk-East Side Entrance	Gray Non-Fibrous Homogeneous			100% Other	None Detected
Key-27 / 23042518-027 Door Caulk-2nd Floor Stair Landing	White Non-Fibrous Homogeneous			100% Other	None Detected
Key-28 / 23042518-028 Caulking-SE Side Covered Windows (Small)	Brown Non-Fibrous Homogeneous			100% Other	None Detected

Analyst:

Approved Signatory:

Analysis Date: 8/7/2023

Date: 8/7/2023



SanAir ID Number  
**23042518**  
 FINAL REPORT  
 8/7/2023 11:48:41 AM

**Name:** Keystone Environmental, LLC  
**Address:** 4705 Ferris Ave  
 Madison, WI 53716  
**Phone:** 231-651-0791

**Project Number:**  
**P.O. Number:**  
**Project Name:** MAN 82  
**Collected Date:** 8/2/2023  
**Received Date:** 8/4/2023 10:40:00 AM

Analyst: Hogrefe, Sarah

### Asbestos Bulk PLM EPA 600/R-93/116

SanAir ID / Description	Stereoscopic	Components		Asbestos Fibers
	Appearance	% Fibrous	% Non-fibrous	
Key-29 / 23042518-029 Caulk-SE Side Vertical Seam	Gray Non-Fibrous Homogeneous		100% Other	< 1% Chrysotile
Key-30 / 23042518-030 Caulking-NE Side Windows (Covered)	Brown Non-Fibrous Homogeneous		100% Other	None Detected
Key-31 / 23042518-031 Window Caulk Throughout Exterior, Caulk	Beige Non-Fibrous Homogeneous		100% Other	None Detected
Key-31 / 23042518-031 Window Caulk Throughout Exterior, Caulk	Gray Non-Fibrous Homogeneous		97% Other	3% Chrysotile
Key-32 / 23042518-032 Window Caulk Throughout Exterior, Caulk	Beige Non-Fibrous Homogeneous		100% Other	None Detected
Key-32 / 23042518-032 Window Caulk Throughout Exterior, Caulk	Gray Non-Fibrous Homogeneous		97% Other	3% Chrysotile
Key-33 / 23042518-033 Window Caulk Throughout Exterior, Caulk	Beige Non-Fibrous Homogeneous		100% Other	None Detected
Key-33 / 23042518-033 Window Caulk Throughout Exterior, Caulk	Gray Non-Fibrous Homogeneous		97% Other	3% Chrysotile
Key-34 / 23042518-034 Patch Caulk-West Side Exterior	White Non-Fibrous Homogeneous		100% Other	None Detected

Analyst:

Approved Signatory:

Analysis Date: 8/7/2023

Date: 8/7/2023

## Disclaimer

This report is the sole property of the client named on the SanAir Technologies Laboratory chain-of-custody (COC). Results in the report are confidential information intended only for the use by the customer listed on the COC. Neither results nor reports will be discussed with or released to any third party without our client's written permission. The final report shall not be reproduced except in full without written approval of the laboratory to assure that parts of the report are not taken out of context. This report and any information contained within shall not be edited, altered, or modified in any way by any persons or agencies receiving, viewing, distributing, or otherwise possessing a copy of this final report. The laboratory reserves the right to perform amendments to any finalized report, of which shall supersede and make obsolete any previous editions. Such changes, modifications, additions, or deletions shall be effective immediately upon notice thereof, which may be given by means including but not limited to posting on the SanAir client portal website, electronic or conventional mail, or by any other means. The information provided in this report applies only to the samples submitted and is relevant only for the date, time, and location of sampling. The accuracy of the results is dependent upon the client's sampling procedure and information provided to the laboratory by the client on the COC. SanAir assumes no responsibility for the sampling procedure and will provide evaluation reports based solely on the sample(s) in the condition in which they arrived at the laboratory and information provided by the client on the COC, such as: project number, project name, collection dates, po number, special instructions, samples collected by, sample numbers, sample identifications, sample type, selected analysis type, flow rate, total volume or area, and start stop times that may affect the validity of the results in this report. Samples were received in good condition unless otherwise noted on the report. SanAir assumes no responsibility or liability for the manner in which the results are used or interpreted. This report does not constitute nor shall not be used by the client to claim product, process, system, or person certification, approval, or endorsement by NVLAP, NIST, NELAC, AIHA LAP, LLC or any other U.S. governmental agencies and may not be accredited by every local, state, and federal regulatory agencies. Samples are held for a period of 60 days. Fibers smaller than 5 microns cannot be seen with this method due to scope limitations. For NY state samples, method EPA 600/M4-82-020 is performed.

### NYELAP Disclaimer:

Polarized- light microscopy is not consistently reliable in detecting asbestos in floor covering and similar non-friable organically bound materials. Quantitative transmission electron microscopy is currently the only method that can be used to determine if this material can be considered or treated as non-asbestos containing.

### Asbestos Accreditations

National Voluntary Laboratory Accreditation Program (NVLAP) Lab Code 200870-0  
City of Philadelphia Department of Public Health Air Management Services, Certification#ALL-460  
Commonwealth of Pennsylvania Department of Environmental Protection Number 68-05397  
California State Environmental Laboratory Accreditation Program Certificate Number 2915  
Colorado Department of Public Health and Environment Registration Number AL-23143  
Connecticut Department of Public Health Environmental Laboratory Registration Number PH-0105  
Massachusetts Department of Labor Standards Asbestos Analytical Services License Number: AA000222  
State of Maine Department of Environmental Protection License Number: LB-0075, LA-0084  
New York State Department of Health Laboratory ID: 11983  
State of Rhode Island Department of Health Certification No.: PCM00126, PLM00126, TEM00126  
Texas Department of State Health Services License Number: 300440  
Commonwealth of Virginia Department of Professional and Occupational Regulation Number: 3333000323  
State of Washington Department of Ecology Laboratory ID: C989  
State of West Virginia Bureau for Public Health Analytical Laboratory Number: LT000616  
Vermont Department of Health License Number: Asb-Co-An-000006  
Louisiana Department of Environmental Quality AI Number 212253, Certificate #05088



1551 Oakbridge Dr. STE B  
 Powhatan, VA 23139  
 804.897.1177 / 888.895.1177  
 Fax 804.897.0070  
 sanair.com

**Asbestos**  
**Chain of Custody**  
 Form 140, Rev 1, 1/20/2017

SanAir ID Number  
 23042518

Company: <b>Keystone Environmental LLC</b>		Project #:	Collect by:
Address: <b>4705 Ferris Ave</b>		Project Name: <b>MAN82</b>	Phone #: <b>2316510791</b>
City, St., Zip: <b>Madison</b>		Date Collected: <b>8/2/23</b>	Fax #:
State of Collection:	Account#:	P.O. Number:	Email: <b>contact@keystone-env.com</b>

Bulk			Air			Soil		
ABB	PLM EPA 600/R-93/116	<input checked="" type="checkbox"/>	ABA	PCM NIOSH 7400	<input type="checkbox"/>	ABSE	PLM EPA 600/R-93/116 (Qual.)	<input type="checkbox"/>
	Positive Stop	<input type="checkbox"/>	ABA-2	OSHA w/ TWA*	<input type="checkbox"/>	<b>Vermiculite &amp; Soil</b>		
ABEPA	PLM EPA 400 Point Count	<input type="checkbox"/>	ABTEM	TEM AHERA	<input type="checkbox"/>	ABSP	PLM CARB 435 (LOD <1%)	<input type="checkbox"/>
ABB1K	PLM EPA 1000 Point Count	<input type="checkbox"/>	ABATN	TEM NIOSH 7402	<input type="checkbox"/>	ABSP1	PLM CARB 435 (LOD 0.25%)	<input type="checkbox"/>
ABBEN	PLM EPA NOB**	<input type="checkbox"/>	ABT2	TEM Level II	<input type="checkbox"/>	ABSP2	PLM CARB 435 (LOD 0.1%)	<input type="checkbox"/>
ABBCH	TEM Chatfield**	<input type="checkbox"/>	Other:		<input type="checkbox"/>	<b>Dust</b>		
ABBTM	TEM EPA NOB**	<input type="checkbox"/>	<b>New York ELAP</b>			ABWA	TEM Wipe ASTM D-6480	<input type="checkbox"/>
ABQ	PLM Qualitative	<input type="checkbox"/>	PLM NY	PLM EPA 600/M4-82-020	<input type="checkbox"/>	ABDMV	TEM Microvac ASTM D-5755	<input type="checkbox"/>
** Available on 24-hr. to 5-day TAT			ABEPA2	NY ELAP 198.1	<input type="checkbox"/>	<b>Matrix Other</b>		
<b>Water</b>			ABENY	NY ELAP 198.6 PLM NOB	<input type="checkbox"/>			<input type="checkbox"/>
ABHE	EPA 100.2	<input type="checkbox"/>	ABBNY	NY ELAP 198.4 TEM NOB	<input type="checkbox"/>			<input type="checkbox"/>

Turn Around Times	3 HR (4 HR TEM) <input type="checkbox"/>	6 HR (8HR TEM) <input type="checkbox"/>	12 HR <input type="checkbox"/>	<b>24 HR</b> <input checked="" type="checkbox"/>
	<input type="checkbox"/> 2 Days	<input type="checkbox"/> 3 Days	<input type="checkbox"/> 4 Days	<input type="checkbox"/> 5 Days

**Special Instructions**

Sample #	Sample Identification/Location	Volume or Area	Sample Date	Flow Rate*	Start - Stop Time*
Key-01	Brown Wall Mastic Behind wall covering	~600	8/2/23	-	-
-02	White Boiler Door Fabric - on Boiler	~10			
-03	Clear Boiler Door Caulk - ↓	~5			
-04	Beige Wall Mastic Behind wall covering	~1500			
-05	2" Brown Baseboard - Ground Floor - East End	~200			
-06	Beige Mastic Behind Baseboard - Boiler Room	~↓			
-07	Adhesive Between Wallboard - Ground Floor	~3500			
-08	Black TAR Paper Beneath Boards - ↓	~↓			
-09	Yellow CERAMIC Tiles - Ground Floor Bathrooms	~2,000			
-10	White Grout Associated w/ Tile - ↓	~↓			
-11	Brown Mastic Behind Tile - ↓	~↓			
-12	Gray Tile Caulk - ↓	~25			

Relinquished by	Date	Time	Received by	Date	Time
T. Kelly	8/2/23		TRM	8/4/23	10:40 am

If no technician is provided, then the primary contact for your account will be selected. Unless scheduled, the turnaround time for all samples received after 3 pm EST Friday will begin at 8 am Monday morning. Weekend or holiday work must be scheduled ahead of time and is charged for rush turnaround time. SanAir covers Standard Overnight FedEx shipping. Shipments billed to SanAir with a faster shipping rate will result in additional charges.

23042518

Sample #	Sample Identification/Location	Volume or Area	Sample Date	Flow Rate*	Start - Stop Time*
-13	Gray Sink Undercoat - Ground Floor Wooden Room	10	8/2/23	-	-
-14	Dark Brown Mastic Behind Cork Boards - class room	3,000			
-15	Gray Paperboard Covering Chalkboard - Room 109 - 100				
-16	Green Terrazo - 1st Floor Hall				
-17	White Drywall - 1st Floor Behind Chalkboards				
-18	↑ - Behind Printing Fountain				
-19	↓ - 2nd Floor Center Room				
-20	Compound - 2nd Floor East End				
-21	↓ - 2nd Floor Center Room				
-22	↓ -				
-23	Green/Gray Wall Mastic - 2nd Floor Behind Plastic Sheeting	5			
-24	White Caulking Around Drafting 2nd Floor Bathroom	5			
-25	Dark Brown Caulking - East Side Exterior Windows	50			
-26	Gray/Gold Door Caulk - East Side Entrance (covered)	20			
-27	White Door Caulk - 2nd Floor Stair Landing	5			
-28	Brown Caulking - S.E. Side Covered Windows (small)	100			
-29	Gray Caulk - S. E. Side Vertical Seam	20			
-30	Dark Brown Caulking - N.E. Side Windows (covered)	100			
-31	Beige/Gray Window Caulk <del>throughout</del>	200			
-32	↓ - Throughout Exterior	↓			
-33					
-34	White Patch Caulk - West Side Exterior	20	↓	↓	↓
-35					
-36					
-37					
-38					
-39					
-40					
-41					
-42					
-43					

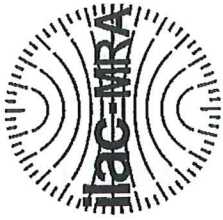
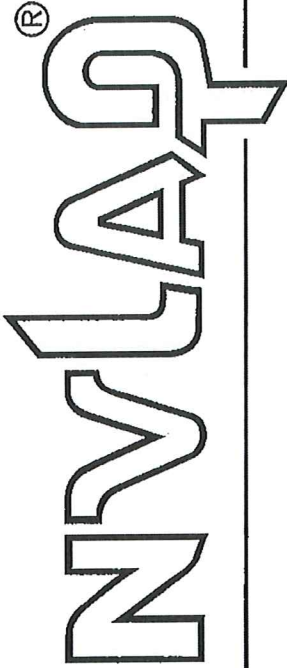
Special Instructions

Relinquished by	Date	Time	Received by	Date	Time
			ICM	8/4/23	10:40am

If no technician is provided, then the primary contact for your account will be selected. Unless scheduled, the turnaround time for all samples received after 3 pm EST Friday will begin at 8 am Monday morning. Weekend or holiday work must be scheduled ahead of time and is charged for rush turnaround time. SanAir covers Standard Overnight FedEx shipping. Shipments billed to SanAir with a faster shipping rate will result in additional charges.

Page 2 of 9

United States Department of Commerce  
National Institute of Standards and Technology



---

# Certificate of Accreditation to ISO/IEC 17025:2017

---

NVLAP LAB CODE: 200870-0

**SanAir Technologies Laboratory, Inc.**  
N. Chesterfield, VA

is accredited by the National Voluntary Laboratory Accreditation Program for specific services,  
listed on the Scope of Accreditation, for:

## Asbestos Fiber Analysis

*This laboratory is accredited in accordance with the recognized International Standard ISO/IEC 17025:2017.  
This accreditation demonstrates technical competence for a defined scope and the operation of a laboratory quality  
management system (refer to joint ISO-ILAC-IAF Communiqué dated January 2009).*

2023-04-01 through 2024-03-31

Effective Dates

A handwritten signature in black ink, appearing to read "Peter S. Lamm".

---

For the National Voluntary Laboratory Accreditation Program



SCOPE OF ACCREDITATION TO ISO/IEC 17025:2017

SanAir Technologies Laboratory, Inc.

10501 Trade Court

N. Chesterfield, VA 23236

Ms. Sandra Sobrino

Phone: 804-897-1177 Fax: 804-897-0070

Email: [ssobrino@sanair.com](mailto:ssobrino@sanair.com)

<http://www.sanair.com>

ASBESTOS FIBER ANALYSIS

NVLAP LAB CODE 200870-0

Bulk Asbestos Analysis

Code

Description

18/A01

EPA -- 40 CFR Appendix E to Subpart E of Part 763, Interim Method of the Determination of Asbestos in Bulk Insulation Samples

18/A03

EPA 600/R-93/116: Method for the Determination of Asbestos in Bulk Building Materials

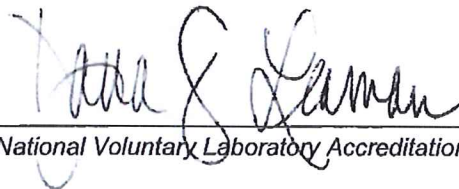
Airborne Asbestos Analysis

Code

Description

18/A02

U.S. EPA's "Interim Transmission Electron Microscopy Analytical Methods-Mandatory and Nonmandatory-and Mandatory Section to Determine Completion of Response Actions" as found in 40 CFR, Part 763, Subpart E, Appendix A.



For the National Voluntary Laboratory Accreditation Program

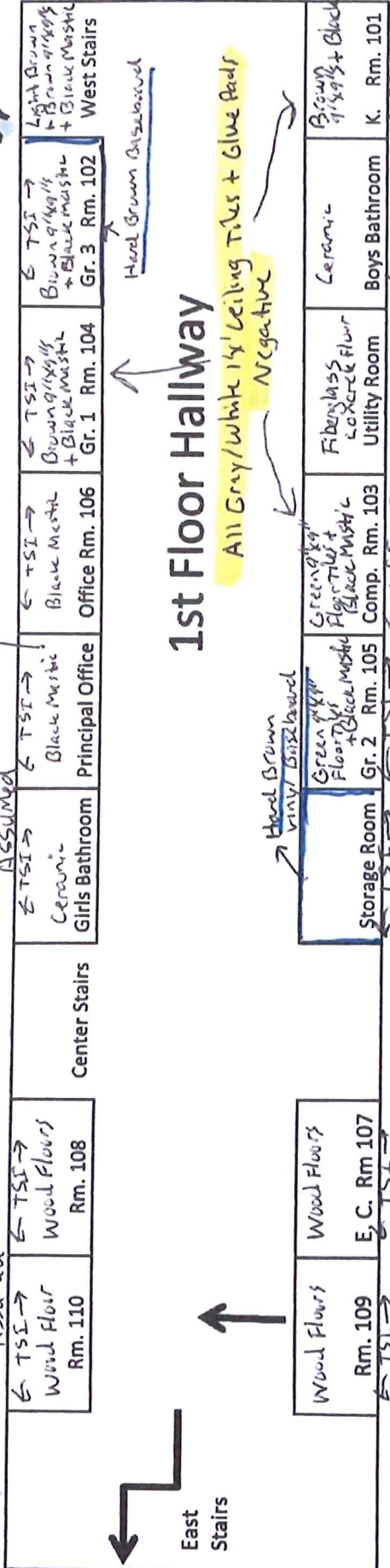
**Attachment C**

**Floorplans and Photos**

# Classroom Tornado Drill Procedure



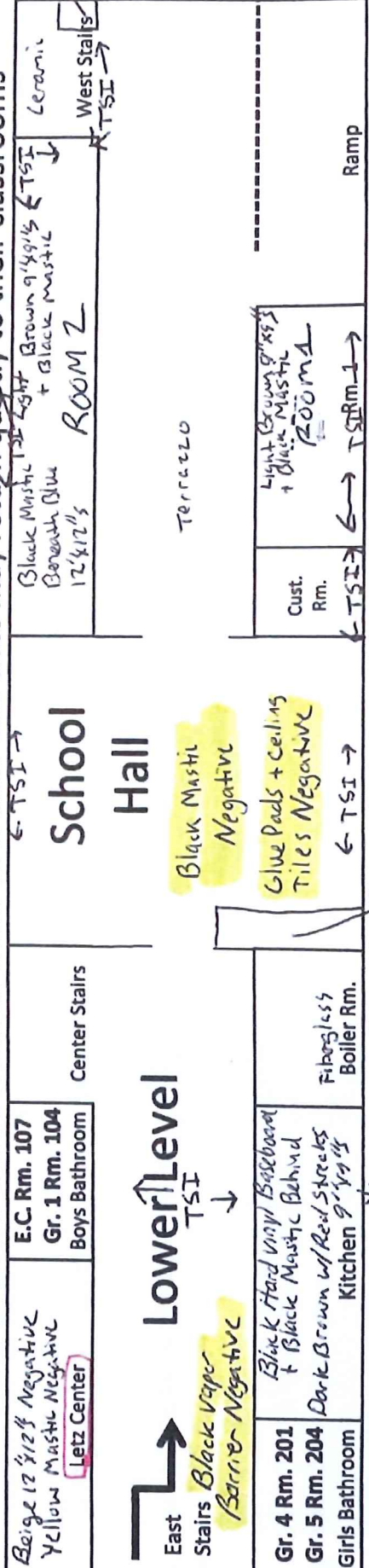
Brown Glue Pads  
Above Gray 7'x7" Ceiling Tiles



## 1st Floor Hallway

All Gray/white 1x1' Ceiling Tiles + Glue Pads  
Negative

1. The warning signal is 3 short rings of the bell repeated several times
2. Move quickly and silently to the lower level using the East Stairs.
3. Kneel with head bent forward and covered with your hands
4. Teachers and staff will be notified when all is clear and class may return quietly to their classrooms



## Lower Level

Black Mastic Negative  
Blue Pads + Ceiling Tiles Negative

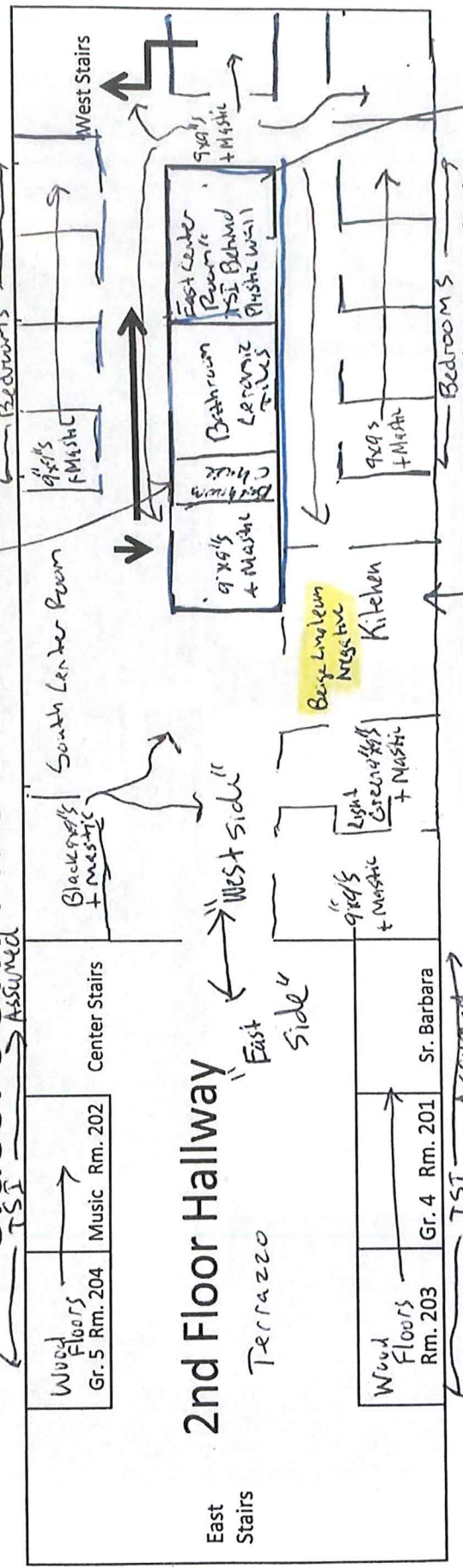
\*Specials will go to the designated class area\*  
1" Large Refrigeration Room"  
Gray w/ Red streaks 12'x12"  
+ Black Mastic



TSE in Bathroom chase



# Classroom Fire Drill Procedure



2nd Floor Hallway

9' x 9' + Mastic

1. When the fire alarm sounds students will walk single file down the hall to the West Stairs

2. Walk quietly to the far side of the parking lot where the blacktop meets the grass

3. Stand quietly until the all clear bell has been rung

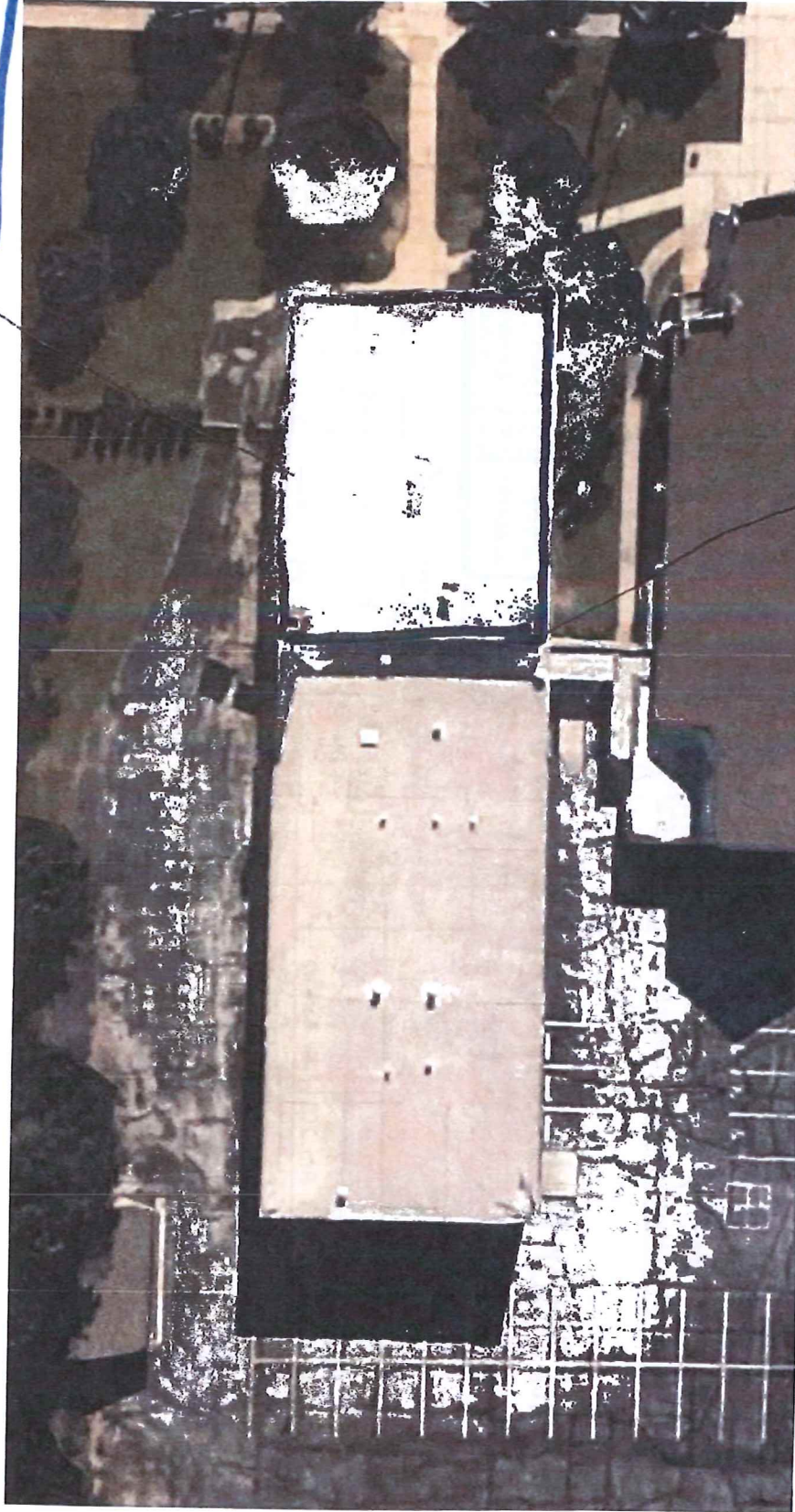
4. Return quietly and in a single file back to the classroom

White Linoleum Beneath Sink

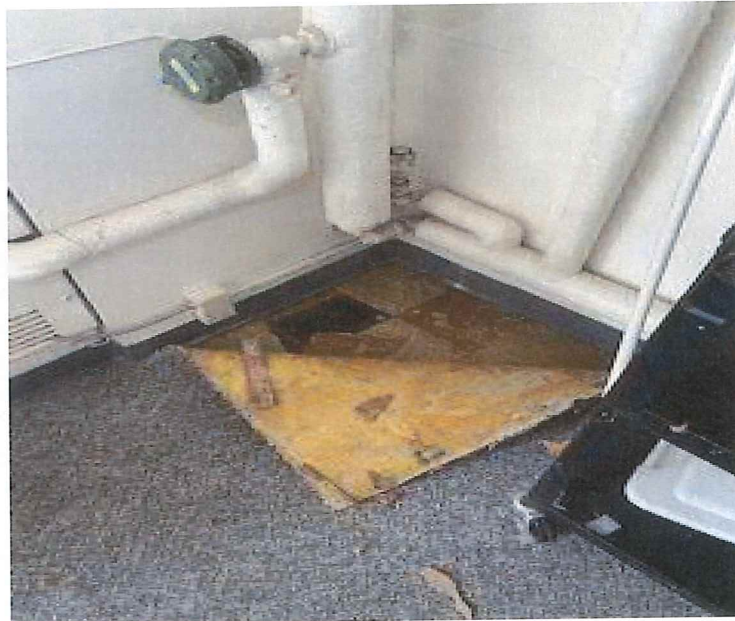
- Hard Brown vinyl Baseboards are present throughout the West Side

# Roof ACM Location

ACM Glue/Mastic Beneath  
Black Rubber Roofing Field



Location of vertical seam of  $< 10\%$  gray caulk



Photograph 1 – A view of the light brown and dark brown 9"x9" floor tiles and black mastic in lower-level room 2.



Photograph 2 – A view of the lower-level kitchen with dark brown w/ red streaks 9"x9" (negative black mastic) floor tiles and hard black baseboard and associated mastic .



Photograph 3 – A view of the gray w/ red streaks 12"x12" floor tile and associated mastic in the lower level refrigeration/mechanical room.



Photograph 4 – A view of the TSI on piping in the west space beneath stairs in the lower-level.

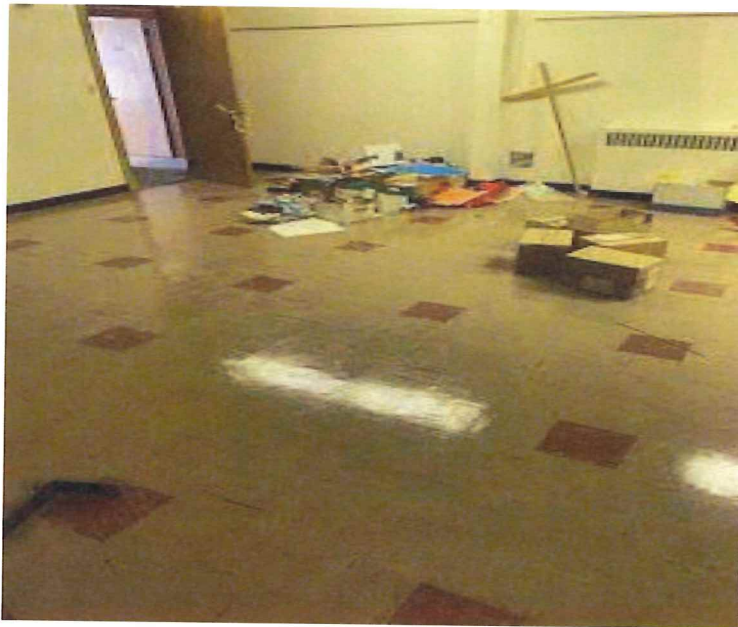


Photograph 5 – A view of the TSI on piping above ceiling outside the boiler room in the lower-level.

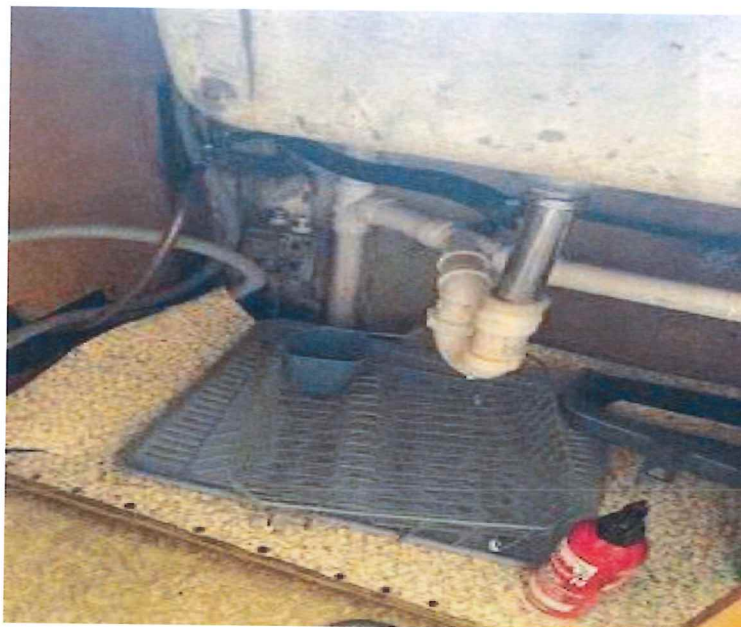


Photograph 6 – A view of the TSI on the 2<sup>nd</sup> floor in the bathroom chase.





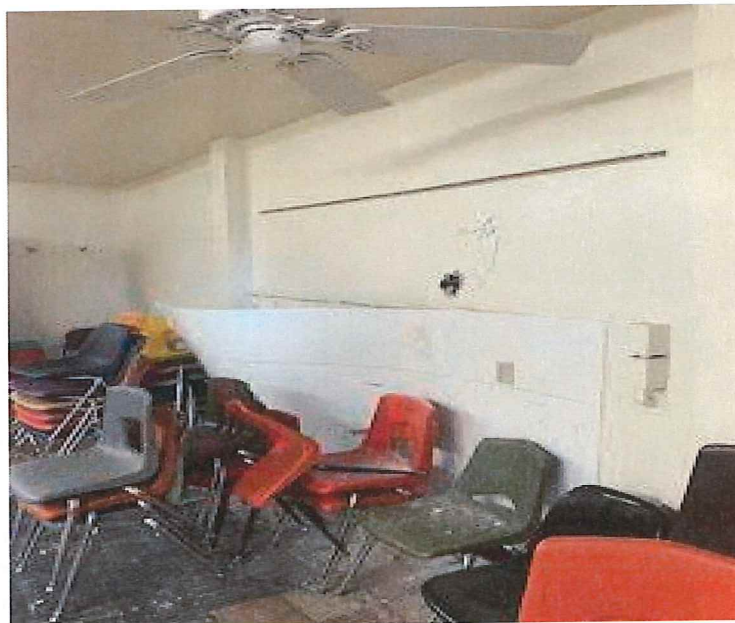
Photograph 7 – A view of the light brown 9'x9' tiles in the 2<sup>nd</sup> floor center room.



Photograph 8 – A view of the white linoleum beneath the kitchen sink on the 2<sup>nd</sup> floor.



Photograph 9 – A view of the area with the black 9"x9" floor tiles in the 2<sup>nd</sup> floor south center room.



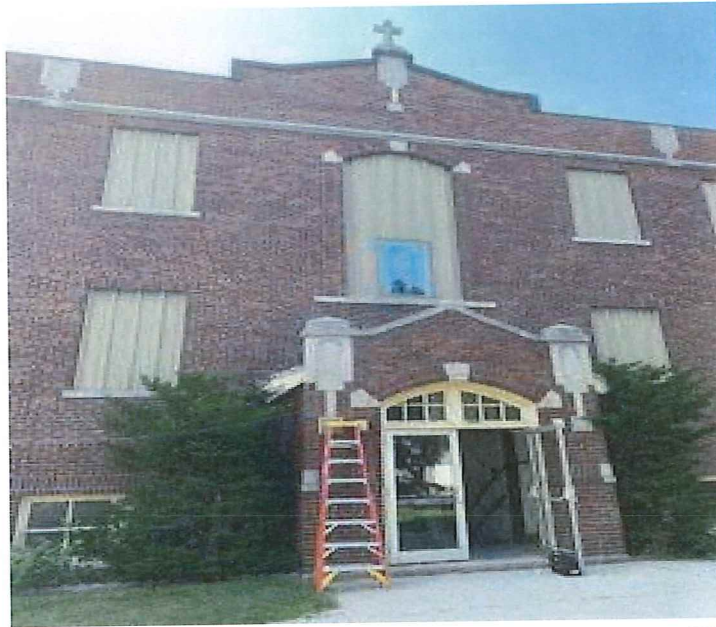
Photograph 10 – A view of the white plastic sheeting in the 2<sup>nd</sup> floor center room with TSI behind.



Photograph 11 – A view of a hallway on the 2<sup>nd</sup> floor with 9”9”s beneath.



Photograph 12 – A view of the <1% gray caulking/vertical seam on the S.E. portion of the building.



Photograph 13 – A view of the east side entrance.



Photograph 14 – A view of the beige/gray window caulking.



Photograph 15 – A view of the caulking and window glazing.



Photograph 16 – A view of the black roofing field with ACM mastic beneath.